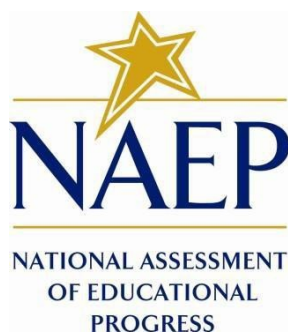


*NATIONAL CENTER FOR EDUCATION STATISTICS  
NATIONAL ASSESSMENT OF EDUCATIONAL PROGRESS*

*National Assessment of Education Progress (NAEP) 2022  
Long-Term Trend (LTT) 2022  
Materials Update #2*

*Appendix K4  
Long Term Trend (LTT) 2022 Survey Questionnaires*

*OMB# 1850-0928 v.25*



September 2021

**LTT Age 9 Core Math and Reading Survey Questionnaires were previously approved by OMB (OMB# 1850-0928 v.16).**

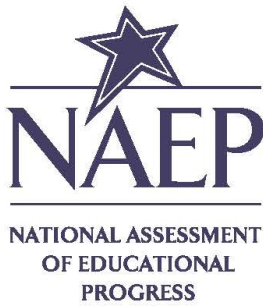
**This appendix includes the new addition of the COVID-19 student and school items for the LTT Age 9 administration. These items were approved in Amendment 1 (OMB# 1850-0928 v.23) for the 2022 Main NAEP administration.**

## Table of Contents

Sample NAEP Student Questionnaire Cover Page.....	3
Appendix K4-1: Operational LTT Age 9 Mathematics (Previously approved by OMB – OMB# 1850-0928 v.16).....	4
Appendix K4-2: Operational Age 9 Reading (Previously approved by OMB – OMB# 1850-0928 v.16).....	7
Appendix K4-3: Operational LTT Age 9 COVID-19 Student Items (ELA) <b>NEW</b> .....	10
Appendix K4-4: Operational LTT Age 9 COVID-19 Student Items (Math) <b>NEW</b> .....	13
Appendix K4-5: Operational LTT Age 9 Core School Items (Previously approved by OMB – OMB# 1850-0928 v.23).....	17
Appendix K4-6: Operational LTT Age 9 COVID-19 School Items <b>NEW</b> .....	25

# Sample NAEP Student Questionnaire Cover Page

P  
7  
4  
2  
1  
P  
7  
4  
2  
1  
P  
7  
4  
2  
1  
P  
7  
4  
2  
1  
P  
7  
4  
2  
1  
P  
7  
4  
2  
1  
P  
7  
4  
2  
1  
P  
7  
4  
2  
1  
P  
7  
4  
2  
1  
P  
7  
4  
2  
1  
P  
7  
4  
2  
1  
P  
7  
4  
2  
1  
P  
7  
4  
2  
1  
P  
7  
4  
2  
1  
P  
7  
4  
2  
1  
P  
7  
4  
2  
1  
P  
7  
4  
2  
1  
P  
7  
4  
2  
1



2022 SECTION Mathematics  
LTT-9 1 Mxx Book  
2 Mxx MXXX  
3 Mxx  
4 BM

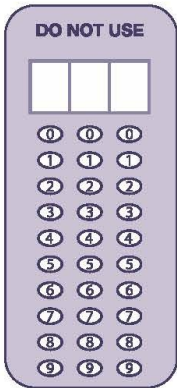
Admin Form Line #   
From Session #

School Information  
SCHOOL #

Planning Code (Col. C)  Admin. Code (Col. J)   
If Code 2 or 3, complete the box below.  
**Accommodations Offered in Regular or Separate Session (Code All That Apply)**  
If Extended Time (EXT) is coded below, enter the total time used below.   

<input type="checkbox"/> EXT	<input type="checkbox"/> LRG
<input type="checkbox"/> SMG	<input type="checkbox"/> MAG
<input type="checkbox"/> ONE	<input type="checkbox"/> TEM
<input type="checkbox"/> RA-D	<input type="checkbox"/> EQP
<input type="checkbox"/> RA-O	<input type="checkbox"/> SEA
<input type="checkbox"/> RA-A	<input type="checkbox"/> CUE
<input type="checkbox"/> CT-R	<input type="checkbox"/> BRL
<input type="checkbox"/> BRK	<input type="checkbox"/> SL-D
<input type="checkbox"/> SSTF	<input type="checkbox"/> SL-P
<input type="checkbox"/> SCR	<input type="checkbox"/> SL-R
	<input type="checkbox"/> BI-D
	<input type="checkbox"/> RA-DS
	<input type="checkbox"/> BI-B
	<input type="checkbox"/> RA-AS
	<input type="checkbox"/> OTR

Large empty rectangular box for student information.



PLACE LABEL HERE

National Center for Education Statistics (NCES) conducts the National Assessment of Educational Progress to evaluate federally supported education programs. All of the information you provide may be used only for statistical purposes and may not be disclosed, or used, in identifiable form for any other purpose except as required by law (20 U.S.C. §9573 and 6 U.S.C. §151). By law, every NCES employee as well as every NCES agent, such as contractors and NAEP coordinators, has taken an oath and is subject to a jail term of up to 5 years, a fine of \$250,000, or both if he or she willfully discloses ANY identifiable information about you. Electronic submission of your information will be monitored for viruses, malware, and other threats by Federal employees and contractors in accordance with the Cybersecurity Enhancement Act of 2015.

NCES estimates the time required to complete this information collection to average 70 minutes, including the time to review instructions and complete and complete the information collection. This voluntary information collection was reviewed and approved by OMB (Control No. 1850-0928). If you have any comments concerning the accuracy of the time estimate, suggestions for improving this collection, or any comments or concerns regarding the status of your individual submission, please write to: *National Assessment of Educational Progress (NAEP), National Center for Education Statistics (NCES), Potomac Center Plaza, 550 12th St., SW, 4th floor, Washington, DC 20202*, or send an email to: [nces.information.collections@ed.gov](mailto:nces.information.collections@ed.gov).  
OMB No. 1850-0928 APPROVAL EXPIRES 5/31/2024  
X00000-001:321 Printed in the USA by Pearson ISD360566

**Appendix K4-1: Operational LTT Age 9 Mathematics (Previously approved by OMB – OMB# 1850-0928 v.16)**

VB331330

1. Are you Hispanic or Latino? Fill in **one or more ovals**.
- A No, I am not Hispanic or Latino.
  - B Yes, I am Mexican, Mexican American, or Chicano.
  - C Yes, I am Puerto Rican or Puerto Rican American.
  - D Yes, I am Cuban or Cuban American.
  - E Yes, I am from some other Hispanic or Latino background.

VB331331

2. Which of the following best describes you? Fill in **one or more ovals**.
- A White
  - B Black or African American
  - C Asian
  - D American Indian or Alaska Native
  - E Native Hawaiian or other Pacific Islander

VB331335

3. About how many books are there in your home?
- A Few (0–10)
  - B Enough to fill one shelf (11–25)
  - C Enough to fill one bookcase (26–100)
  - D Enough to fill several bookcases (more than 100)

VB331336

4. Is there a computer at home that you use?
- A Yes
  - B No

5. About how many pages a day do you have to read in school and for homework?

- A 5 or fewer
- B 6–10
- C 11–15
- D 16–20
- E More than 20

BO001200

6. How much time did you spend on homework yesterday?

- A No homework was assigned.
- B I had homework but didn't do it.
- C Less than 1 hour
- D 1 to 2 hours
- E More than 2 hours

VB331339

7. How often do you talk about things you have studied in school with someone in your family?

- A Never or hardly ever
- B Once every few weeks
- C About once a week
- D Two or three times a week
- E Every day

VB331447

8. How many days were you absent from school in the last month?

- A None
- B 1 or 2 days
- C 3 or 4 days
- D 5 to 10 days
- E More than 10 days

9. How often do people in your home talk to each other in a language other than English?
- A Never
  - B Once in a while
  - C About half of the time
  - D All or most of the time

**Appendix K4-2: Operational Age 9 Reading (Previously approved by OMB – OMB# 1850-0928 v.16)**

VB331330

1. Are you Hispanic or Latino? Fill in **one or more ovals**.
- A No, I am not Hispanic or Latino.
  - B Yes, I am Mexican, Mexican American, or Chicano.
  - C Yes, I am Puerto Rican or Puerto Rican American.
  - D Yes, I am Cuban or Cuban American.
  - E Yes, I am from some other Hispanic or Latino background.

VB331331

2. Which of the following best describes you? Fill in **one or more ovals**.
- A White
  - B Black or African American
  - C Asian
  - D American Indian or Alaska Native
  - E Native Hawaiian or other Pacific Islander

VB331335

3. About how many books are there in your home?
- A Few (0–10)
  - B Enough to fill one shelf (11–25)
  - C Enough to fill one bookcase (26–100)
  - D Enough to fill several bookcases (more than 100)

VB331336

4. Is there a computer at home that you use?
- A Yes
  - B No

5. About how many pages a day do you have to read in school and for homework?
- A 5 or fewer
  - B 6–10
  - C 11–15
  - D 16–20
  - E More than 20

BO001200

6. How much time did you spend on homework yesterday?
- A No homework was assigned.
  - B I had homework but didn't do it.
  - C Less than 1 hour
  - D 1 to 2 hours
  - E More than 2 hours

VB331339

7. How often do you talk about things you have studied in school with someone in your family?
- A Never or hardly ever
  - B Once every few weeks
  - C About once a week
  - D Two or three times a week
  - E Every day

VB331447

8. How many days were you absent from school in the last month?
- A None
  - B 1 or 2 days
  - C 3 or 4 days
  - D 5 to 10 days
  - E More than 10 days



9. How often do people in your home talk to each other in a language other than English?

- A Never
- B Once in a while
- C About half of the time
- D All or most of the time

SO003500

10. How often do you do each of the following things?

	<b>Almost every day</b>	<b>Once or twice a week</b>	<b>Once or twice a month</b>	<b>A few times a year</b>	<b>Never or hardly ever</b>	
a. Read for fun on your own time.	A	B	C	D	E	VC375071
b. Tell a friend about a good book.	A	B	C	D	E	VC375073

## Appendix K4-3: Operational LTT Age 9 COVID-19 Student Items (ELA) NEW

VR233341

1. During the last school year, did you ever attend school from home or somewhere else outside of school because of the COVID-19 outbreak?
- A Yes
  - B No
  - C I do not remember.

VR233349

2. During the last school year, did you attend this school or did you attend a different school?
- A This school
  - B Different school

VR233352

3. While attending school from home or somewhere else outside of school, did you have the following things available to you to complete your schoolwork or online classes? Select **one** answer choice on each row.

	Yes, available all the time	Yes, available some of the time	No, not available	I do not remember.	
a. Access to high-speed internet	<input type="radio"/> A	<input type="radio"/> B	<input type="radio"/> C	<input type="radio"/> D	VR233416
b. A desktop computer, a laptop computer, or tablet	<input type="radio"/> A	<input type="radio"/> B	<input type="radio"/> C	<input type="radio"/> D	VR233417
c. A smartphone (for example, iPhone, Samsung Galaxy, HTC One)	<input type="radio"/> A	<input type="radio"/> B	<input type="radio"/> C	<input type="radio"/> D	VR233418
d. A printer	<input type="radio"/> A	<input type="radio"/> B	<input type="radio"/> C	<input type="radio"/> D	VR233419
e. School supplies (for example, paper and pencil)	<input type="radio"/> A	<input type="radio"/> B	<input type="radio"/> C	<input type="radio"/> D	VR233420
f. A quiet place to work	<input type="radio"/> A	<input type="radio"/> B	<input type="radio"/> C	<input type="radio"/> D	VR233421

4. While attending school from home or somewhere else outside of school, how often did the following things happen? Select **one** answer choice on each row.

	Never or hardly ever	About once or twice a month	About once or twice a week	Every day or almost every day	I do not remember.	
a. My teacher was available to help me with English/language arts schoolwork (for example, through virtual office hours, phone, e-mail, chat).	Ⓐ	Ⓑ	Ⓒ	Ⓓ	Ⓔ	VR233428
b. My teacher asked me to work online with my classmates in small groups to complete English/language arts assignments.	Ⓐ	Ⓑ	Ⓒ	Ⓓ	Ⓔ	VR233429
c. My teacher asked me to take English/language arts quizzes and tests online.	Ⓐ	Ⓑ	Ⓒ	Ⓓ	Ⓔ	VR233430

5. How difficult or easy was it for you to learn while attending school from home or somewhere else outside of school?
- Ⓐ A lot more difficult than learning at school
  - Ⓑ Somewhat more difficult than learning at school
  - Ⓒ Somewhat easier than learning at school
  - Ⓓ A lot easier than learning at school

6. While attending school from home or somewhere else outside of school, how often did someone help you with your schoolwork?
- Ⓐ Never or hardly ever
  - Ⓑ About once or twice a month
  - Ⓒ About once or twice a week
  - Ⓓ Every day or almost every day
  - Ⓔ I do not remember.

VR233362

7. While attending school from home or somewhere else outside of school, did any of the following people help you with your schoolwork or online classes? Select **one** answer choice on each row.

	Yes	No	
a. Mother, stepmother, foster mother or other female legal guardian	Ⓐ	Ⓑ	VR233460
b. Father, stepfather, foster father or other male legal guardian	Ⓐ	Ⓑ	VR233463
c. Brother or sister	Ⓐ	Ⓑ	VR233466
d. Other person	Ⓐ	Ⓑ	VR233467

VR233358

8. Thinking about attending school from home or somewhere else outside of school for your English/language arts class, do you think you would be able to do each of the following things? Select **one** answer choice on each row.

	I definitely can't	I probably can't	Maybe	I probably can	I definitely can	
a. Recognize when you don't understand something you are learning	Ⓐ	Ⓑ	Ⓒ	Ⓓ	Ⓔ	VR233442
b. Ask for help when you need it	Ⓐ	Ⓑ	Ⓒ	Ⓓ	Ⓔ	VR233443
c. Find learning resources online to learn more about something you don't understand	Ⓐ	Ⓑ	Ⓒ	Ⓓ	Ⓔ	VR233444

## Appendix K4-4: Operational LTT Age 9 COVID-19 Student Items (Math) NEW

VR233341

1. During the last school year, did you ever attend school from home or somewhere else outside of school because of the COVID-19 outbreak?
- Ⓐ Yes
  - Ⓑ No
  - Ⓒ I do not remember.

VR233349

2. During the last school year, did you attend this school or did you attend a different school?
- Ⓐ This school
  - Ⓑ Different school

VR233352

3. While attending school from home or somewhere else outside of school, did you have the following things available to you to complete your schoolwork or online classes? Select **one** answer choice on each row.

	Yes, available all the time	Yes, available some of the time	No, not available	I do not remember.	
a. Access to high-speed internet	Ⓐ	Ⓑ	Ⓒ	Ⓓ	VR233416
b. A desktop computer, a laptop computer, or tablet	Ⓐ	Ⓑ	Ⓒ	Ⓓ	VR233417
c. A smartphone (for example, iPhone, Samsung Galaxy, HTC One)	Ⓐ	Ⓑ	Ⓒ	Ⓓ	VR233418
d. A printer	Ⓐ	Ⓑ	Ⓒ	Ⓓ	VR233419
e. School supplies (for example, paper and pencil)	Ⓐ	Ⓑ	Ⓒ	Ⓓ	VR233420
f. A quiet place to work	Ⓐ	Ⓑ	Ⓒ	Ⓓ	VR233421

4. While attending school from home or somewhere else outside of school, how often did the following things happen? Select **one** answer choice on each row.

	Never or hardly ever	About once or twice a month	About once or twice a week	Every day or almost every day	I do not remember.	
a. My teacher was available to help me with math schoolwork (for example, through virtual office hours, phone, e-mail, chat).	Ⓐ	Ⓑ	Ⓒ	Ⓓ	Ⓔ	VR233431
b. My teacher asked me to work online with my classmates in small groups to complete math assignments.	Ⓐ	Ⓑ	Ⓒ	Ⓓ	Ⓔ	VR233432
c. My teacher asked me to take math quizzes and tests online.	Ⓐ	Ⓑ	Ⓒ	Ⓓ	Ⓔ	VR233433

5. How difficult or easy was it for you to learn while attending school from home or somewhere else outside of school?

- Ⓐ A lot more difficult than learning at school
- Ⓑ Somewhat more difficult than learning at school
- Ⓒ Somewhat easier than learning at school
- Ⓓ A lot easier than learning at school

6. While attending school from home or somewhere else outside of school, how often did someone help you with your schoolwork?
- Ⓐ Never or hardly ever
  - Ⓑ About once or twice a month
  - Ⓒ About once or twice a week
  - Ⓓ Every day or almost every day
  - Ⓔ I do not remember.

VR233362

7. While attending school from home or somewhere else outside of school, did any of the following people help you with your schoolwork or online classes? Select **one** answer choice on each row.

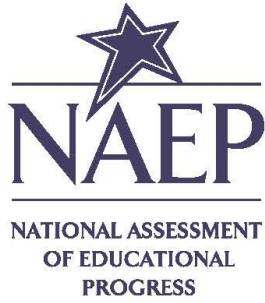
	Yes	No	
a. Mother, stepmother, foster mother or other female legal guardian	Ⓐ	Ⓑ	VR233460
b. Father, stepfather, foster father or other male legal guardian	Ⓐ	Ⓑ	VR233463
c. Brother or sister	Ⓐ	Ⓑ	VR233466
d. Other person	Ⓐ	Ⓑ	VR233467

VR233359

8. Thinking about attending school from home or somewhere else outside of school for your math class, do you think you would be able to do each of the following things? Select **one** answer choice on each row.

	I definitely can't	I probably can't	Maybe	I probably can	I definitely can	
a. Recognize when you don't understand something you are learning	Ⓐ	Ⓑ	Ⓒ	Ⓓ	Ⓔ	VR233447
b. Ask for help when you need it	Ⓐ	Ⓑ	Ⓒ	Ⓓ	Ⓔ	VR233448
c. Find learning resources online to learn more about something you don't understand	Ⓐ	Ⓑ	Ⓒ	Ⓓ	Ⓔ	VR233449

Sample NAEP School Questionnaire Cover Page



2022  
LTT-9

School  
Questionnaire

Q-950

**Directions For School Staff**

To complete this questionnaire:

- Use a number 2 pencil.
- Answer each question to the best of your ability.
- Return the questionnaire to your NAEP school coordinator by \_\_\_ / \_\_\_ .

**For NAEP Staff Use Only**

SCHOOL #

--	--	--	--	--	--	--

**DO NOT USE**

A	B	C	D	E	F
0	0	0	0	0	0
1	1	1	1	1	1
2	2	2	2	2	2
3	3	3	3	3	3
4	4	4	4	4	4
5	5	5	5	5	5
6	6	6	6	6	6
7	7	7	7	7	7
8	8	8	8	8	8
9	9	9	9	9	9

PLACE LABEL HERE

National Center for Education Statistics (NCES) conducts the National Assessment of Educational Progress to evaluate federally supported education programs. All of the information you provide may be used only for statistical purposes and may not be disclosed, or used, in identifiable form for any other purpose except as required by law (20 U.S.C. §9673 and 6 U.S.C. §151). By law, every NCES employee as well as every NCES agent, such as contractors and NAEP coordinators, has taken an oath and is subject to a jail term of up to 5 years, a fine of \$250,000, or both if he or she willfully discloses ANY identifiable information about you. Electronic submission of your information will be monitored for viruses, malware, and other threats by Federal employees and contractors in accordance with the Cybersecurity Enhancement Act of 2015.

NCES estimates the time required to complete this information collection to average 40 minutes, including the time to review instructions and complete and review the information collection. This voluntary information collection was reviewed and approved by OMB (Control No. 1850-0028). If you have any comments concerning the accuracy of the time estimate, suggestions for improving this collection, or any comments or concerns regarding the status of your individual submission, please write to: National Assessment of Educational Progress (NAEP), National Center for Education Statistics (NCES), Potomac Center Plaza, 550 12th St., SW, 4th floor, Washington, DC 20202, or send an email to: [nces.information.collections@ed.gov](mailto:nces.information.collections@ed.gov).  
OMB No. 1850-0028 APPROVAL EXPIRES 5/31/2024  
202863-001:321 Printed in the USA by Pearson ISD35181



**Appendix K4-5: Operational LTT Age 9 Core School Items (Previously approved by  
OMB – OMB# 1850-0928 v.23)**

VH240382

1. What grades are taught in your school? Select **all** squares that apply.

- Pre-kindergarten
- Kindergarten
- 1st grade
- 2nd grade
- 3rd grade
- 4th grade
- 5th grade
- 6th grade
- 7th grade
- 8th grade
- 9th grade
- 10th grade
- 11th grade
- 12th grade

VH860697

2. Can your school be described by any of the following? Select **all** squares that apply.

- Elementary school
- Middle or junior high school
- Secondary school
- Regular school with a magnet program
- A magnet school or a school with a special program emphasis, e.g., science/mathematics school, performing arts school, talented/gifted school, foreign language immersion school
- Special education school: primarily serves students with disabilities
- Alternative school: offers a curriculum designed to provide alternative or nontraditional education, not clearly categorized as regular, special, or vocational education
- Private independent school
- Private religiously affiliated school
- Independent charter school
- Charter school administered by local school district

3. Please identify the organization(s) listed below to which your school is most closely affiliated. Select all squares that apply.

- American Association of Christian Schools
- Association of Christian Schools International
- Christian Schools International
- National Association of Episcopal Schools
- National Association of Independent Schools
- National Catholic Educational Association
- National Society of Hebrew Day Schools
- The Association of Boarding Schools
- Not affiliated with any organization

4. What is the current enrollment in your school?

5. Of the students currently enrolled in your school, what percentage has been identified as limited-English proficient?

- 0%
- 1–5%
- 6–10%
- 11–25%
- 26–50%
- 51–75%
- 76–90%
- Over 90%

6. Last school year, approximately what percentage of students at your school enrolled after the first day of school?
- Ⓐ 0%
  - Ⓑ 1–3%
  - Ⓒ 4–6%
  - Ⓓ 7–10%
  - Ⓔ 11–20%
  - Ⓕ Over 20%

7. Last school year, approximately what percentage of students at your school left before the end of the school year?
- Ⓐ 0%
  - Ⓑ 1–3%
  - Ⓒ 4–6%
  - Ⓓ 7–10%
  - Ⓔ 11–20%
  - Ⓕ Over 20%

8. About what percentage of your teachers is absent on an average day? (Include all absences in calculating this rate.)
- Ⓐ 0–2%
  - Ⓑ 3–5%
  - Ⓒ 6–10%
  - Ⓓ More than 10%

9. Does your school participate in the National School Lunch Program?
- Ⓐ Yes
  - Ⓑ No

10. How does the school operate the program?
- Ⓐ Student eligibility is determined individually, and eligible students receive free or reduced-price lunch.
  - Ⓑ All students in school receive free lunch under special provisions (e.g., Provision 2 or 3).

11. During this school year, about what percentage of students in your school was eligible to receive a free or reduced-price lunch through the National School Lunch Program?

- A 0%
- B 1–5%
- C 6–10%
- D 11–25%
- E 26–34%
- F 35–50%
- G 51–75%
- H 76–99%
- I 100%

12. Does your school receive Title I funding? (Title I is a federally funded program that provides educational services, such as remedial reading or remedial math, to children who live in areas with high concentrations of low-income families.)

- A No
- B Yes, our school receives funds, which are targeted to eligible students.
- C Yes, our school receives funds, which are used for schoolwide purposes.

13. Approximately what percentage of students in your school receives the following services? Select **one** circle in each row. Students who receive more than one service should be counted for each service they receive. Please report the percentage of students who receive each of the following services as of the day you respond to this questionnaire.

	None	1–5%	6–10%	11–25%	26–50%	51–75%	76–90%	Over 90%	
a. Targeted Title I services	<input type="radio"/> A	<input type="radio"/> B	<input type="radio"/> C	<input type="radio"/> D	<input type="radio"/> E	<input type="radio"/> F	<input type="radio"/> G	<input type="radio"/> H	VH241931
b. Gifted and talented program	<input type="radio"/> A	<input type="radio"/> B	<input type="radio"/> C	<input type="radio"/> D	<input type="radio"/> E	<input type="radio"/> F	<input type="radio"/> G	<input type="radio"/> H	VH241922
c. English-as-a-second-language (not in a bilingual education program)	<input type="radio"/> A	<input type="radio"/> B	<input type="radio"/> C	<input type="radio"/> D	<input type="radio"/> E	<input type="radio"/> F	<input type="radio"/> G	<input type="radio"/> H	VH241924
d. Special education	<input type="radio"/> A	<input type="radio"/> B	<input type="radio"/> C	<input type="radio"/> D	<input type="radio"/> E	<input type="radio"/> F	<input type="radio"/> G	<input type="radio"/> H	VH241925

14. During a typical week of school, what is the total number of regularly scheduled volunteers, including parents, working in the school? Include only volunteers physically in the school building.
- Ⓐ 0
  - Ⓑ 1–5
  - Ⓒ 6–10
  - Ⓓ 11–15
  - Ⓔ 16–25
  - Ⓕ More than 25

15. Approximately what percentage of students in your school have parents or guardians who do each of the following activities? Select **one** circle in each row.

	Not applicable	0–10%	11–25%	26–50%	Over 50%	
a. Volunteer regularly to help in the classroom or another part of the school (Include only volunteers physically in the school building.)	<input type="radio"/> Ⓐ	<input type="radio"/> Ⓑ	<input type="radio"/> Ⓒ	<input type="radio"/> Ⓓ	<input type="radio"/> Ⓔ	VH241940
b. Attend teacher–parent conferences	<input type="radio"/> Ⓐ	<input type="radio"/> Ⓑ	<input type="radio"/> Ⓒ	<input type="radio"/> Ⓓ	<input type="radio"/> Ⓔ	VH241939

16. For all teacher counts entered in this item:

*INCLUDE these types of teachers:*

- Regular
- Special area or resource teachers (e.g., special education, Title I, art, music, physical education)
- Long-term substitute teachers

*INCLUDE these types of teachers:*

- Itinerant teachers who teach part-time at this school
- Employees reported in other items of this section if they also have a part-time teaching assignment at this school

*DO NOT INCLUDE:*

- Student teachers
- Short-term substitute teachers
- Teachers who teach ONLY pre-kindergarten or adult education

Around the first of October, how many TEACHERS held full-time or part-time positions or assignments in this school? *If none, mark (0) in the boxes.*

**a. Full-time**

\_\_\_\_\_ Full-time teachers

**b. Part-time**

\_\_\_\_\_ Part-time teachers

VH547401

17. Does your school, district, or diocese offer tenure to teachers?

- A Yes
- B No

VH860698

18. In this school year, which of the following types of computers or other digital devices are available in your school or distributed by the school for student use? Select **all** squares that apply.

- A Desktop computers
- B Laptop computers (including Chromebooks)
- C Tablets (for example, Surface Pro, iPad, Kindle Fire)

19. What is the average age of the **desktop computers** in your school?

- Ⓐ Up to 2 years old
- Ⓑ More than 2 years but less than 4 years old
- Ⓒ More than 4 years but less than 6 years old
- Ⓓ 6 years old or more
- Ⓔ I don't know.

20. In your school, where are **desktop computers** available for students to work? Select **all** squares that apply.

- Ⓐ In some classrooms
- Ⓑ In all classrooms
- Ⓒ In a media center
- Ⓓ In a computer lab
- Ⓔ In the school library
- Ⓕ The school distributed desktop computers to students doing distance learning.

21. What is the total number of **laptop computers** (including Chromebooks) available for students in your school? Enter the number of laptop computers.

22. What is the average age of the **laptop computers** (including Chromebooks) in your school?

- Ⓐ Up to 2 years old
- Ⓑ More than 2 years but less than 4 years old
- Ⓒ More than 4 years but less than 6 years old
- Ⓓ 6 years old or more
- Ⓔ I don't know.

23. In your school, where are **laptop computers** (including Chromebooks) available for students to work? Select **all** squares that apply.

- In some classrooms
- In all classrooms
- In a media center
- In a computer lab
- In the school library
- On mobile carts
- The school distributed laptop computers to students doing distance learning.

VH311502

24. What is the total number of **tablets** (for example, Surface Pro, iPad, Kindle Fire) available for students in your school? Enter the number of tablets.

VH587138

25. What is the average age of the **tablets** (for example, Surface Pro, iPad, Kindle Fire) in your school?

- Up to 2 years old
- More than 2 years but less than 4 years old
- More than 4 years but less than 6 years old
- 6 years old or more
- I don't know.

VH860793

26. In your school, where are **tablets** (for example, Surface Pro, iPad, Kindle Fire) available for students to work? Select **all** squares that apply.

- In some classrooms
- In all classrooms
- In a media center
- In a computer lab
- In the school library
- On mobile carts
- The school distributed tablets to students doing distance learning.



27. In your school, is there a wireless Internet connection that students can use for schoolwork?

- A Yes, everywhere or almost everywhere in the school.
- B Yes, in some areas of the school.
- C No

## Appendix K4-6: Operational LTT Age 9 COVID-19 School Items NEW

VR267149

1. For **this school year**, were the following actions taken to prepare for teaching in a distance learning format? Select **one** circle in each row.

	Yes, before this school year	Yes, during this school year	Yes, before and during this school year	No	Distance learning was not offered.	
a. Training of teachers and staff on the use of digital applications for conducting distance learning (e.g., Google Classroom, Zoom)	<input type="radio"/> A	<input type="radio"/> B	<input type="radio"/> C	<input type="radio"/> D	<input type="radio"/> E	VR267150
b. Training of students and/or their parents/guardians on the use of digital devices and applications for distance learning (e.g., Google Classroom, Zoom)	<input type="radio"/> A	<input type="radio"/> B	<input type="radio"/> C	<input type="radio"/> D	<input type="radio"/> E	VR267151
c. Preparing digital resources for students' distance learning (e.g., curating existing resources, designing new resources)	<input type="radio"/> A	<input type="radio"/> B	<input type="radio"/> C	<input type="radio"/> D	<input type="radio"/> E	VR267152
d. Preparing paper-based resources for students' distance learning (e.g., curating existing resources, designing new resources)	<input type="radio"/> A	<input type="radio"/> B	<input type="radio"/> C	<input type="radio"/> D	<input type="radio"/> E	VR267156
e. Adapting existing curriculum plans and resources for distance learning	<input type="radio"/> A	<input type="radio"/> B	<input type="radio"/> C	<input type="radio"/> D	<input type="radio"/> E	VR267154
f. Planning additional instructional support for students with disabilities (SD)	<input type="radio"/> A	<input type="radio"/> B	<input type="radio"/> C	<input type="radio"/> D	<input type="radio"/> E	VR267155
g. Planning additional instructional support for English language learners (ELLs)	<input type="radio"/> A	<input type="radio"/> B	<input type="radio"/> C	<input type="radio"/> D	<input type="radio"/> E	VR267153



2. For **this school year**, did your school or district distribute laptop computers or tablets to students to take home?
- Ⓐ The school or district distributed laptop computers or tablets to all students at the beginning of the school year (i.e., we are a one-to-one school).
  - Ⓑ The school or district distributed laptop computers or tablets to all students doing distance learning.
  - Ⓒ The school or district distributed laptop computers or tablets only to students doing distance learning who did not have access to one at home.
  - Ⓓ The school or district did not distribute laptop computers or tablets to any students.
  - Ⓔ Other (Please specify): \_\_\_\_\_

3. For **this school year**, did your school or district assist students with getting Internet access at home? Select **all** squares that apply.
- Ⓐ All of the students at this school already have Internet access at home.
  - Ⓑ The school or district worked with Internet providers to assist students doing distance learning with getting Internet access at home.
  - Ⓒ The school or district provided hotspots or other devices to assist students doing distance learning with getting Internet access at home.
  - Ⓓ The school or district made spaces available where students doing distance learning could safely access free Wi-Fi internet (e.g., in the school parking lot, parked school buses with hotspots, etc.).
  - Ⓔ The school or district did not assist students with getting Internet access at home.
  - Ⓕ Other (Please specify): \_\_\_\_\_

4. In **this school year**, how was class instruction organized? Select **one** circle in each row.

	Not applicable	None of the classes	Some of the classes	About half of the classes	More than half of the classes	All or almost all of the classes	
a. Classes normally taught in person were canceled and not replaced by distance learning.	Ⓐ	Ⓑ	Ⓒ	Ⓓ	Ⓔ	Ⓕ	VR268534
b. Classes normally taught in person moved to a distance learning format.	Ⓐ	Ⓑ	Ⓒ	Ⓓ	Ⓔ	Ⓕ	VR268535
c. Students completed lessons on their own (e.g., watching pre-recorded videos, working on paper packets).	Ⓐ	Ⓑ	Ⓒ	Ⓓ	Ⓔ	Ⓕ	VR267165
d. Lessons were conducted in real-time (e.g., via phone, video conferencing, online chat, online learning platforms).	Ⓐ	Ⓑ	Ⓒ	Ⓓ	Ⓔ	Ⓕ	VR267163

5. While doing distance learning **this school year**, how often were teachers and staff required to do the following things? Select **one** circle in each row.

	Not applicable	Never or hardly ever	About once or twice a month	About once or twice a week	Every day or almost every day	
a. Communicate with students online (e.g., through email, Google Classroom, Zoom)	<input type="radio"/> A	<input type="radio"/> B	<input type="radio"/> C	<input type="radio"/> D	<input type="radio"/> E	VR267172
b. Conduct virtual office hours or online meetings with students	<input type="radio"/> A	<input type="radio"/> B	<input type="radio"/> C	<input type="radio"/> D	<input type="radio"/> E	VR267173
c. Initiate phone calls to students	<input type="radio"/> A	<input type="radio"/> B	<input type="radio"/> C	<input type="radio"/> D	<input type="radio"/> E	VR267175
d. Initiate communications with parents or guardians about their child's progress	<input type="radio"/> A	<input type="radio"/> B	<input type="radio"/> C	<input type="radio"/> D	<input type="radio"/> E	VR267174

6. Has the structure of **this school year** been modified in the following ways? Select **one** circle in each row.

	Yes	No	
a. The school year started earlier.	<input type="radio"/> A	<input type="radio"/> B	VR239706
b. The school year will end later.	<input type="radio"/> A	<input type="radio"/> B	VR239707
c. The length of the school day has been extended to make up for learning time that was missed last school year.	<input type="radio"/> A	<input type="radio"/> B	VR239708
d. School attendance has been scheduled in shifts (e.g., attendance for half days or every other day).	<input type="radio"/> A	<input type="radio"/> B	VR249734
e. Additional school programs or classes have been offered to students to make up for gaps in learning.	<input type="radio"/> A	<input type="radio"/> B	VR239710
f. Students had the option to repeat their previous grade level.	<input type="radio"/> A	<input type="radio"/> B	VR239711

7. Were you working as an administrator (e.g., school principal, head of school, assistant principal) at this school during the 2020-2021 school year?
- A Yes
  - B No

8. For **last school year**, were the following actions taken to prepare for teaching in a distance learning format? Select **one** circle in each row.

	Yes, before last school year	Yes, during last school year	Yes, before and during last school year	No	Distance learning was not offered.	
a. Training of teachers and staff on the use of digital applications for conducting distance learning (e.g., Google Classroom, Zoom)	<input type="radio"/> A	<input type="radio"/> B	<input type="radio"/> C	<input type="radio"/> D	<input type="radio"/> E	VR374143
b. Training of students and/or their parents/guardians on the use of digital devices and applications for distance learning (e.g., Google Classroom, Zoom)	<input type="radio"/> A	<input type="radio"/> B	<input type="radio"/> C	<input type="radio"/> D	<input type="radio"/> E	VR374144
c. Preparing digital resources for students' distance learning (e.g., curating existing resources, designing new resources)	<input type="radio"/> A	<input type="radio"/> B	<input type="radio"/> C	<input type="radio"/> D	<input type="radio"/> E	VR374145
d. Preparing paper-based resources for students' distance learning (e.g., curating existing resources, designing new resources)	<input type="radio"/> A	<input type="radio"/> B	<input type="radio"/> C	<input type="radio"/> D	<input type="radio"/> E	VR374146
e. Adapting existing curriculum plans and resources for distance learning	<input type="radio"/> A	<input type="radio"/> B	<input type="radio"/> C	<input type="radio"/> D	<input type="radio"/> E	VR374147
f. Planning additional instructional support for students with disabilities (SD)	<input type="radio"/> A	<input type="radio"/> B	<input type="radio"/> C	<input type="radio"/> D	<input type="radio"/> E	VR374148
g. Planning additional instructional support for English language learners (ELLs)	<input type="radio"/> A	<input type="radio"/> B	<input type="radio"/> C	<input type="radio"/> D	<input type="radio"/> E	VR374149

9. For **last school year**, did your school or district distribute laptop computers or tablets to students to take home?
- Ⓐ The school or district distributed laptop computers or tablets to all students at the beginning of the school year (i.e., we are a one-to-one school).
  - Ⓑ The school or district distributed laptop computers or tablets to all students doing distance learning.
  - Ⓒ The school or district distributed laptop computers or tablets only to students doing distance learning who did not have access to one at home.
  - Ⓓ The school or district did not distribute laptop computers or tablets to any students.
  - Ⓔ Other (Please specify): \_\_\_\_\_

10. For **last school year**, did your school or district assist students with getting Internet access at home? Select **all** squares that apply.
- Ⓐ All of the students at this school already had Internet access at home.
  - Ⓑ The school or district worked with Internet providers to assist students doing distance learning with getting Internet access at home.
  - Ⓒ The school or district provided hotspots or other devices to assist students doing distance learning with getting Internet access at home.
  - Ⓓ The school or district made spaces available where students doing distance learning could safely access free Wi-Fi internet (e.g., in the school parking lot, parked school buses with hotspots, etc.).
  - Ⓔ The school or district did not assist students with getting Internet access at home.
  - Ⓕ Other (Please specify): \_\_\_\_\_



11. For last school year, how was class instruction organized? Select **one** circle in each row.

	Not applicable	None of the classes	Some of the classes	About half of the classes	More than half of the classes	All or almost all of the classes	
a. Classes normally taught in person were canceled and not replaced by distance learning.	<input type="radio"/> A	<input type="radio"/> B	<input type="radio"/> C	<input type="radio"/> D	<input type="radio"/> E	<input type="radio"/> F	VR375478
b. Classes normally taught in person moved to a distance learning format.	<input type="radio"/> A	<input type="radio"/> B	<input type="radio"/> C	<input type="radio"/> D	<input type="radio"/> E	<input type="radio"/> F	VR375477
c. Students completed lessons on their own (e.g., watching pre-recorded videos, working on paper packets).	<input type="radio"/> A	<input type="radio"/> B	<input type="radio"/> C	<input type="radio"/> D	<input type="radio"/> E	<input type="radio"/> F	VR375479
d. Lessons were conducted in real-time (e.g., via phone, video conferencing, online chat, online learning platforms).	<input type="radio"/> A	<input type="radio"/> B	<input type="radio"/> C	<input type="radio"/> D	<input type="radio"/> E	<input type="radio"/> F	VR375476

12. While doing distance learning **last school year**, how often were teachers and staff required to do the following things? Select **one** circle in each row.

	Not applicable	Never or hardly ever	About once or twice a month	About once or twice a week	Every day or almost every day	
a. Communicate with students online (e.g., through email, Google Classroom, Zoom)	<input type="radio"/> A	<input type="radio"/> B	<input type="radio"/> C	<input type="radio"/> D	<input type="radio"/> E	VR375487
b. Conduct virtual office hours or online meetings with students	<input type="radio"/> A	<input type="radio"/> B	<input type="radio"/> C	<input type="radio"/> D	<input type="radio"/> E	VR375490
c. Initiate phone calls to students	<input type="radio"/> A	<input type="radio"/> B	<input type="radio"/> C	<input type="radio"/> D	<input type="radio"/> E	VR375488
d. Initiate communications with parents or guardians about their child's progress	<input type="radio"/> A	<input type="radio"/> B	<input type="radio"/> C	<input type="radio"/> D	<input type="radio"/> E	VR375489

13. Was the structure of **last school year** modified in the following ways? Select **one** circle in each row.

	Yes	No	
a. The school year started earlier.	<input type="radio"/> A	<input type="radio"/> B	VR375516
b. The school year ended later.	<input type="radio"/> A	<input type="radio"/> B	VR375517
c. The length of the school day was extended to make up for learning time that was missed last school year.	<input type="radio"/> A	<input type="radio"/> B	VR375518
d. School attendance was scheduled in shifts (e.g., attendance for half days or every other day).	<input type="radio"/> A	<input type="radio"/> B	VR375519
e. Additional school programs or classes were offered to students to make up for gaps in learning.	<input type="radio"/> A	<input type="radio"/> B	VR375520
f. Students had the option to repeat their previous grade level.	<input type="radio"/> A	<input type="radio"/> B	VR375521