

FLDRS Administrator's Guide

Version 4.1.9



About the FLDRS Application	1
If you've used FLDRS before	1
Specifications.....	1
Installing the FLDRS Software	2
FLDRS 4.1.9 installation.....	2
ODBC driver configuration	4
Installing supporting software	5
FLDRS directory structure	6
Starting FLDRS	7
Table Import	8
Importing a support table.....	8
Exporting a support table.....	10
Reloading a support table.....	10
System data backup.....	11
System data recovery.....	12
Software Setup	12
Data Feeds Tab.....	12
Data Export Tab.....	16
Data backup.....	18
Transaction logging.....	18
GNU Encryption	19
Configure Email	19
Sentences Tab.....	21
Users Tab.....	22
Program Terms Tab	23
Dynamic Data Tab	25
Support Tables Tab.....	27
Setting User Defaults	31
Manage Trips	32
View or print trip reports.....	32
Delete old trips.....	32
Retransmit or re-export a trip	32
Troubleshooting	34
GPS status says "GPS Signal: GPS Off"	34
Jumping cursor when GPS is connected	34
Depth sounder says FA but no depth values appear	34
Exported files do not arrive when using SkyMate®	34
Exported files do not arrive when using McMurdo FMCT/G (formerly Boatracs®)	
.....	35
FLDRS Error Messages	37

About the FLDRS Application

The Fisheries Logbook Data Recording Software (FLDRS) application allows fishermen to enter catch data. There are two modules within FLDRS:

- The Administration module simplifies application maintenance and the control of application settings. FLDRS has two administration roles. An *Administrator* has access to the Administration module of the FLDRS application, such as a sector manager, field technician, or scientist. The *eVTR Database Administrator* has authorization to add or modify codes in the master in-house database where FLDRS data are processed and archived.
- The Logbook module captures information on fishing activity, catch, landings, and any additional data defined by an eVTR Database Administrator. The user can change some setup options.

This document explains how to use the tools in the Administration module.

If you've used FLDRS before

Here is a brief summary of the new features/fixes in version 4.1.6:

- Fixed bug with Dynamic Data numeric data validation.
- Ability to add multiple instances of a species with different dispositions.
- Fixed bug with Apportionment and Landing records during trip re-export file creation.

Specifications

The FLDRS application can run on most Windows® operating systems. It supports a connection to a global positioning system (GPS) that provides location data to the FLDRS software, and may also connect to a depth sounder. A connection to a satellite communications system (e.g., McMurdo FMCT/G (formerly Boatracs®), SkyMate®) is desirable, so that catch data can be sent electronically while at sea.

Here are the minimum and recommended systems specifications for PC to run FLDRS:

Specification	Minimum	Recommended
Operating System	Windows XP®	Windows 7®, Windows 8®, or Windows 10®
Processor	Intel Pentium® III or equivalent	Quad-core (or greater) processor
Memory	256 MB	2+ GB
Hard Drive	20 GB	60+ GB
USB Drive	2 USB 1.1 ports	4 or more USB 2.0 ports
Screen Resolution	1024 X 768	At 96dpi: 1680x1050 pixels (W/H ratio = 1.6) 1280x1024 pixels (W/H ratio = 1.25) 1280x768 pixels (W/H ratio = 1.66) 1024x768 pixels (W/H ratio = 1.33)

Installing the FLDRS Software

The installation procedure for FLDRS 4.1.9 is new. Please read and follow the directions carefully.

Windows Vista and 7 users may be asked during the installation if they “...want to allow the following program from an unknown publisher...”
Click *Yes*.

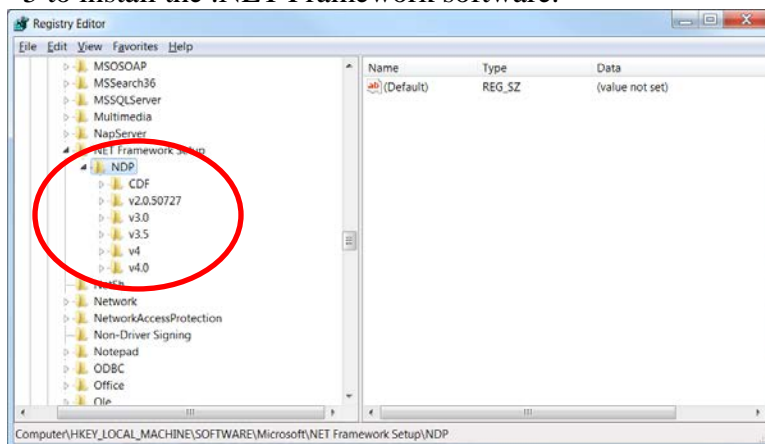
FLDRS 4.1.9 installation

These instructions assume that FLDRS 4.1.9 has not been installed on the host machine.

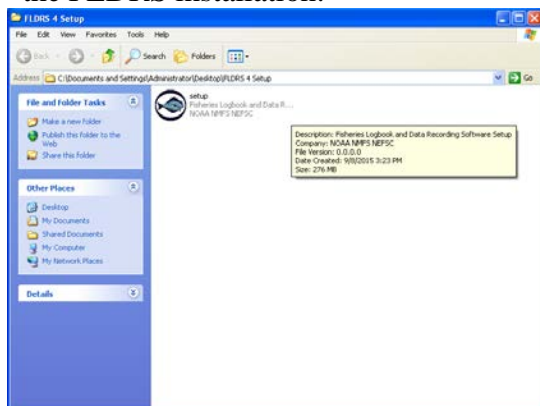
FLDRS 4.1.9 requires that at minimum, Microsoft .NET Framework 4.0 be installed on the host machine. Windows 7 machines should meet this requirement, but older operating systems such as Windows XP may need these libraries installed.

To determine which versions of .NET Framework are installed:

1. Click **Start**, type **regedit** in the Search programs and files box, and then press Enter. (For Windows XP, click **Run** and type regedit in the **Run** dialog box.)
2. Expand, if necessary, the NET Framework Setup folder and then the NDP folders. Look for the V4.0 folder, which indicates that Framework 4.0 or higher is installed. If it is not, see “Installing supporting software” on page 5 to install the .NET Framework software.



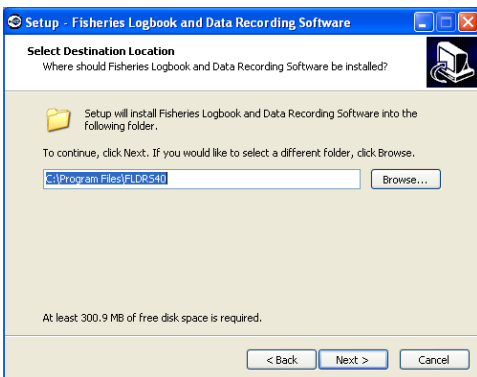
3. Once the .NET Framework is installed, double click on setup.exe to start the FLDRS installation:



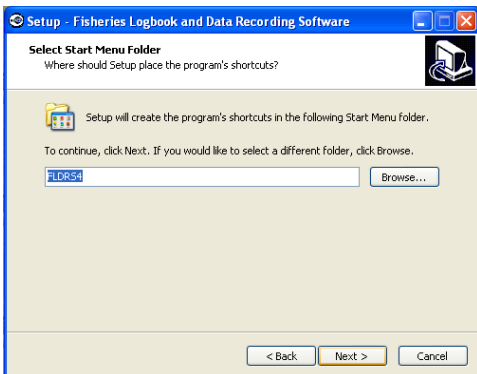
4. Click the Next button.



The setup process shows the location where FLDRS will be installed. Click Next to accept the location and continue.



5. The setup process defines the name of the folder the user will see when clicking on the Start Menu. Click Next to accept the name and continue.



6. Next, review the list of software selected for installation, scrolling down to see the full list. FLDRS 4 requires several additional software programs that are listed in the window.

If this the first installation of FLDRS 4, check the boxes to install all the programs listed under “Additional Software Required” unless you know for certain that these programs are already installed. For example, previous versions of FLDRS required 7-Zip and GNU file encryption software, so if this machine already had FLDRS, you can uncheck those boxes.

For this release, the user needs a PDF reader to read the FLDRS trips, so either make sure that a reader is installed, or check the Install Adobe Reader box to install it now.

7. Click the Next button when you have selected the software to install.
The installation process continues. Once FLDRS is installed, the installation proceeds to install the software you selected earlier.
8. When the installation is complete, click the Finish button.



ODBC driver configuration

The FLDRS installation process will attempt to configure the necessary ODBC driver. If the process is unsuccessful, a warning message will be displayed and the driver will need to be manually configured by following the steps listed below.

After the installation program ends, you need to install both `sqliteodbc.exe` and `sqliteodbc_w64.exe`. Follow the prompts, accepting the defaults where possible.

1. Go to Start, Control Panel, System and Security, Administrative Tools, Data Sources (ODBC)
2. On the User DSN tab, click Add.
3. Double click SQLite3 ODBC Driver. Do not click SQLite.
4. For Data Source Name, type in **FLDRS_SQLite** The case must be exact.
5. For Database name, click Browse and navigate to `C:\NEFSC\FLDRS\Database`.
6. Click `fldrs.sqlite`, then Open, then OK.

Installing supporting software

You can install the required software directly, instead of running the FLDRS installation program. All the supporting software is located in the SupportingFiles subdirectory of the FLDRS installation. Windows XP® installations will not require installing CRRuntime_64bit_13_0_15.msi.

Supporting software	Installation instructions
Microsoft .NET Framework 4.0	Double click on dotNetFx40_Full_x86_x64.exe and complete the installation process, accepting the default settings.
7-zip	Double-click on 7z465.exe and follow the prompts, accepting the defaults where possible. Expected Location: C:\Program Files\7-Zip\7z.exe C:\Program Files (x86)\7-Zip\7z.exe
GnuPG encryption software	Double-click on gpg4win-2_1_0.exe and follow the prompts, accepting the defaults where possible. Install only the GnuPG component, and deselect Kleopatra last. Finish the GnuPG setup in FLDRS, logging in as an administrator and clicking Software Setup. Click on the Data Export tab, and make sure that the GNU Encryption Path field is populated with something like: C:\Program Files\GNU\GnuPG\pub\gpg.exe or C:\Program Files (x86)\GNU\GnuPG\pub\gpg.exe Next, switch tabs or exit and re-enter Software Setup, to make sure that the encryption file path is saved to the database. Next, click the <i>Setup Encryption</i> button to launch a DOS program that sets the trusted certificate for data encryption. At the <i>gpg></i> prompt, enter the following sequence: 5 for the option y for confirmation <i>quit</i> to complete the GnuPG configuration.
Reporting software	Install both CRRuntime_32bit_13_0_15.msi and CRRuntime_64bit_13_0_15.msi. Follow the prompts, accepting the defaults where possible.
SQLite Database Drivers	Install both sqliteodbc.exe and sqliteodbc_w64.exe. Follow the prompts, accepting the defaults where possible.
PDF reader software	If a PDF reader is not already installed, run the AcroRdrDC1500920069_en_US.exe setup, accepting the defaults where possible.

FLDRS directory structure

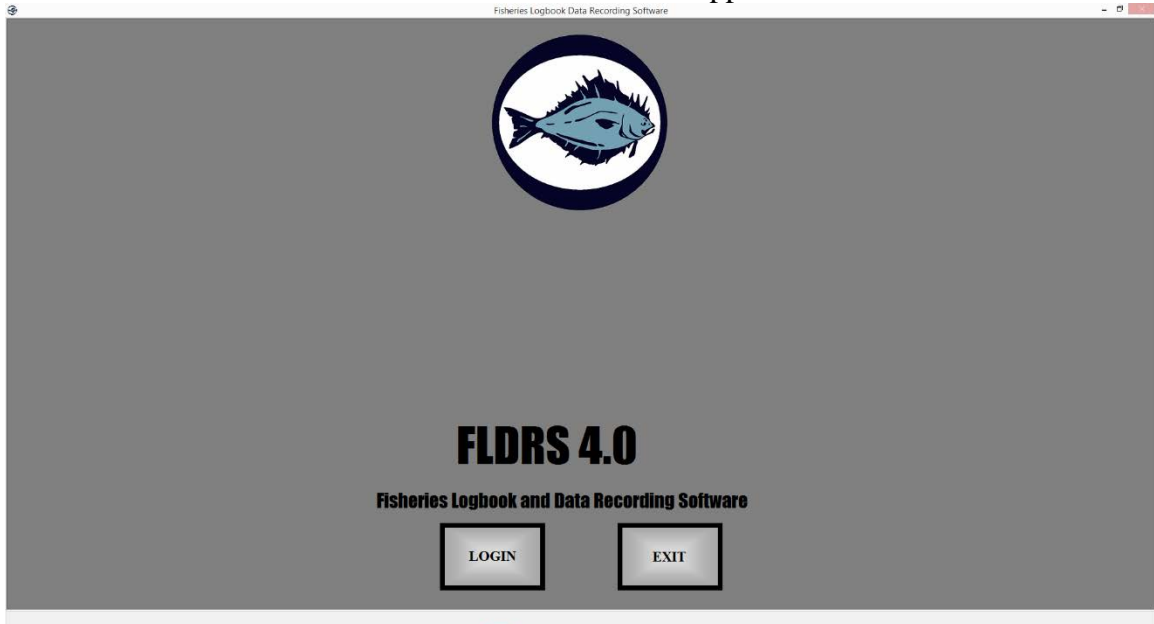
When you install the FLDRS application, it creates these directories and files. You can install to a different path, but by default, the installation process creates these directories in **C:\NEFSC\FLDRS**.

Directory Name	Contents
C:\NEFSC\FLDRS	FLDRS parent directory for all FLDRS software components
C:\NEFSC\FLDRS\Database	Help files for user and Administrator modules
C:\NEFSC\FLDRS\GpsPolling	GPS polling output files
C:\NEFSC\FLDRS\Help	Help files for user and Administrator modules
C:\NEFSC\FLDRS\LocalBackup	Backups created when fisherman saves a trip
C:\NEFSC\FLDRS\Log	FLDRS 4.1 log files
C:\NEFSC\FLDRS\PdfBackup	Location of .pdf trip reports
C:\NEFSC\FLDRS\SupportingFiles	Additional software required for FLDRS
C:\NEFSC\FLDRS\SupportTables	The tables that provide operational and default data for FLDRS
C:\NEFSC\FLDRS\SystemBackup	Files used in database crash recovery

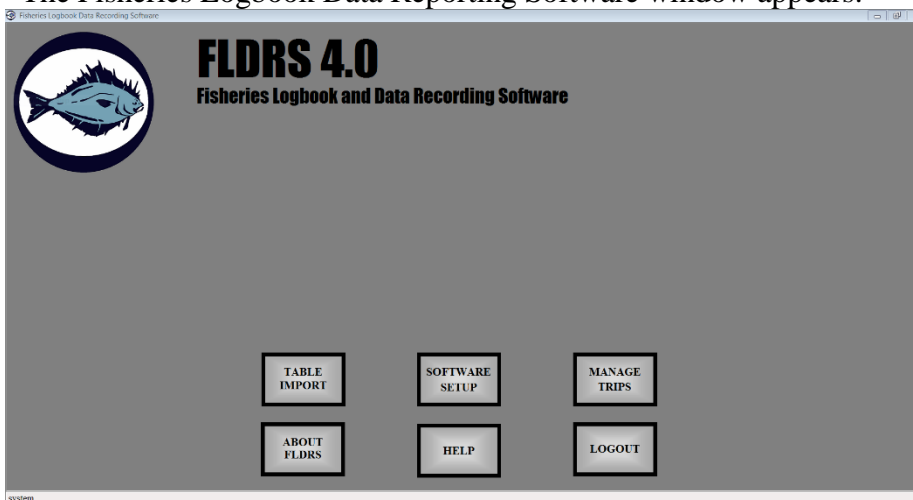
Starting FLDRS



1. On the Windows desktop, find the FLDRS icon.
2. Double-click on the icon. The main FLDRS window appears.



3. Click the *Login* button.
4. Log in with a user name that has Administrator privileges. The first time you log in to FLDRS, use the Administrator account with the username **system** and the password **System.1**
5. The Fisheries Logbook Data Reporting Software window appears:



6. Change the password immediately; see “Users Tab” on page 22.

From this window, you can:

- Import support tables; see below.
- Set up FLDRS; see “Software Setup” on page 12.
- Manage trip reports; see “Manage Trips” on page 32.

Table Import

Use Table Import to update the support tables that provide basic data to the FLDRS application, such as core support tables and system defaults.

Each support table contains a comprehensive list of all the possible codes that a Logbook user might need. The tables can be customized for individual data collection programs, allowing the software to be adapted for different regions, fisheries, or research projects. During the initial setup phase, the Administrator works with the Logbook user to select a set of defaults specific to the fishing vessel.

The Administrator maintains the tables by reloading them when significant updates are distributed. However, importing a new table replaces the current table, and may affect the Logbook user's selections.

Importing a support table

An Administrator can import 14 tables:

Support Table Name	Table Contents
Operators	Lists a subset of permitted operators. To view the table, see "Support Tables Tab" on page 27.
Gear	Lists all the possible types of gear that a fisherman may deploy, along with ranges of acceptable values for the gear description. To view the table, see "Gear Tab" on page 28.
Species	Lists all the possible species that a fisherman can record as a catch or discard, along with grade descriptions, market descriptions, and units of measure combinations. To view the table, see "Species Tab" on page 28.
Port	Lists all the ports where a fisherman can sail or land. To view the table, using Software Setup; see "Ports Tab" on page 30.
Sentence Data	Lists the NMEA 0183 sentences and formats that FLDRS uses to obtain date, time, position and depth information. To update these values, see "Sentences Tab" on page 20.
Species Conversion	Lists the rules that determine which entries of retained catch (species, grade, market, units of measure combinations) can be converted to different grades, market categories, or units of measure when reporting fish landings. The table also contains approximate conversion factors to assist the user in converting grades, market categories, or units of measure. This table cannot be viewed or changed within Software Setup.
System Defaults	Provides FLDRS with information on default dispositions to assign to the retained and discarded catch, and to apportionment records. It also controls the codes that indicate no catch is caught during a fishing effort, and maps dispositions to non-dealer dealer codes (e.g., home consumption, bait, seized by enforcement). You cannot view or change this table within Software Setup.
Vessel	Lists a subset of permitted vessels. To view the table, see "Vessels Tab" on page 27.
Dealer	Lists all the permitted dealers to whom a fisherman can sell. The Dealer table is restricted to sales; non-sales dispositions are in the Disposition table. To view the table, see "Dealers Tab" on page 29.
Disposition	Lists all the possible disposition categories for fish at both the catch (retained and discarded) and apportionment (landings) levels. To view the table, see "Dispositions Tab" on page 30.

Support Table Name	Table Contents
Statistical Areas	Lists all the possible fishing locations, using standard statistical areas for the appropriate region. FLDRS uses this table to assign a statistical area based on positional information (latitude and longitude). This table subdivides each statistical area into ten minutes squares. To view the list of statistical areas, see “Areas Tab” on page 31.
DST Data	Controls adjustments for daylight savings time. Since these are time zone-specific, you need to load a different version of the table if you use FLDRS in a different time zone. You cannot view or change this table within Software Setup.
Program Terms	Lists all the fishery programs in which vessels can participate, along with rules, events, and gear parameters for each program. To view the table, see “Program Terms Tab” on page 23. If you import both this table and the Dynamic Data table, <i>you must import Program Terms first.</i>
Dynamic Data	Lists all the different types of data that a user can be required or desired to collect, along with parameters for each data element. To view the table, see “Dynamic Data Tab” on page 25. If you import both this table and the Program Terms table, <i>you must import Program Terms first.</i>

Exporting a support table

Exporting a support table creates a file containing the table data, saved as comma-separated values.

Currently, you can only export the Sentence Data table, which contains the NMEA strings and default values that you entered in the Sentence Data tab in Software Setup.

You can copy the sentence data setup from one FLDRS computer to another by exporting the file from FLDRS on the source installation, transferring the .csv file to the target installation, and then importing the file into FLDRS on the target installation using Table Import.

Reloading a support table

When a support table changes, the eVTR Database Administrator propagates the change to FLDRS installations in the field by providing an updated .csv file for Administrators to import into the FLDRS application.

WARNING: UPDATING A SUPPORT TABLE SO IT NO LONGER CONTAINS RECORDS USED IN A LOGBOOK USER'S SHORT LIST DELETES THOSE RECORDS FROM THE SHORT LIST.

To reload a support table:

1. First, back up the existing database by copying it and placing a renamed copy in its original location. This allows you to recover the original database if the support table import fails.
2. Start the FLDRS software and log in as an Administrator.
3. Click the *Table Import* button.
4. Click the *Browse* button for the appropriate table, locate the .csv file, and click *Open*.
5. Click the appropriate *Import* button. FLDRS warns you if you are deleting a fisherman's default settings.

For gear only, FLDRS warns you if the values in the user's default settings fall outside the acceptable ranges of the new table. If default settings are outside the acceptable ranges, double-check the default settings and/or consult an eVTR Database Administrator.

6. Check the new table by navigating to the Administrator's Software Setup and selecting the appropriate Support Tables tab. If the support table is not viewable through Software Setup, attempt a test trip and make sure the Logbook works as expected.

If the data does not appear properly in the Logbook user's view of the table, use your saved copy of the database to revert to the original table, and report the problem to an eVTR Database Administrator.

System data backup

FLDRS includes several levels and types of backup and recovery. You can set up FLDRS to create automatic backups, or create a backup manually when desired.

Automatic backups

FLDRS automatically backs up the active trip at specified intervals (set in System Settings' "Data Export Tab" on page 16). In the unhappy event of a catastrophic database failure, the fisherman can use this backup to recover data for the active trip.

When the trip is complete, FLDRS backs up trip, transmission, user and administrator data. If necessary, these files can be imported using the System Data Recovery tab, as described below.

In addition, FLDRS backs up the entire database. If necessary the backup file can be imported as described below.

FLDRS does not automatically back up the entire database of settings. You should back up these settings whenever changes occur; for example, if you have changed the user configuration file but no trip has yet been created, the configuration has not yet been saved automatically.

User backups

If desired, you can manually back up data using the System Data Backup tab in Table Import. To back up system and user data manually:

1. Start the FLDRS software and log in as an Administrator.
2. Click the *Table Import* button.
3. Click the System Data Backup tab.
4. Click the appropriate *Browse* button, specify the location for the backup file, and click *OK*.
5. Click the *Export* button. FLDRS informs you when the backup is complete.

System data recovery

To use backed-up system data to help with crash recovery:

1. Start the FLDRS software and log in as an Administrator.
2. Click the *Table Import* button.
3. Click the System Data Recovery tab.
4. Click the appropriate *Browse* button, specify the backup file's name and location, and click *OK*.
5. Click the *Import* button. FLDRS informs you when the file has been loaded.

Software Setup

Software Setup provides a quick way to view and adjust many of the application's most useful options.

The FLDRS Software Setup provides tools for:

- Setting up satellite communications and the export of trip data; see “Data Feeds Tab” on page 12 and “Data Export Tab” on page 16.
- Managing the links between FLDRS and a GPS unit (see “GPS Setup” on page 12) or a depth sounder (see “Depth sounder” on page 15).
- Setting up the NMEA strings to read from the GPS unit; see “Sentences Tab” on page 20.
- Managing user accounts and access to the FLDRS modules; see “Users Tab” on page 22.
- Viewing details of the programs in which vessels may participate; see “Program Terms Tab” on page 23.
- Viewing the types and parameters of dynamic data that a Logbook user may collect; see “Dynamic Data Tab” on page 25.
- Viewing and controlling the Logbook user's view of the major support tables; see “Support Tables Tab” on page 27.

Data Feeds Tab

The Data Feeds tab contains options for configuring feeds from a GPS (see below) and depth sounder (see “Depth sounder” on page 15).

GPS Setup

The GPS provides time and location information for the various fishing activities (sailing, setting, hauling, landing, etc.). FLDRS uses data from the GPS to associate fishing events with locations, so the fisherman does not have to enter positions manually.

FLDRS does not require a particular make or model of GPS, but the GPS device must receive and transmit the NMEA 0183 sentences defined in the Sentences tab.

To set up a GPS for FLDRS, you need to connect the GPS to the computer running FLDRS, and then configure the FLDRS application to read from the correct port, and to interpret the NMEA sentences correctly.

You may write GPS data to a file by enabling GPS polling; see “GPS polling” on page 14. To set up the GPS to work with FLDRS:

1. Start the FLDRS software and log in as an Administrator.

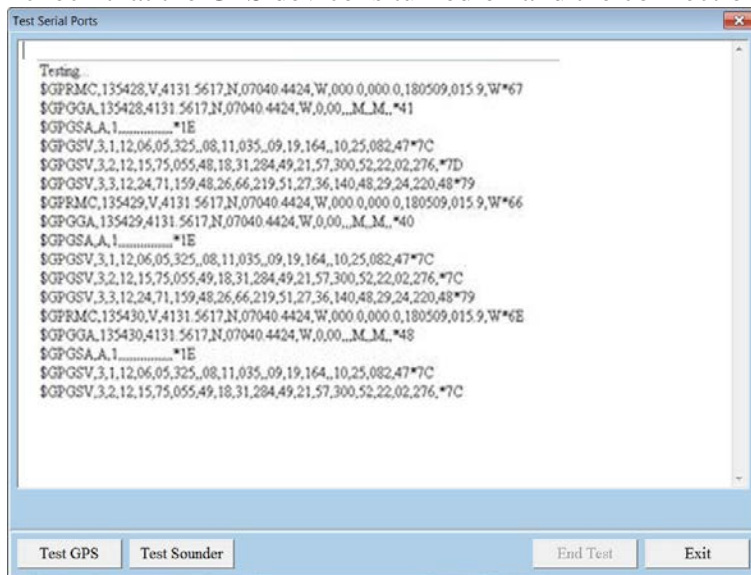
2. Click the *Software Setup* button.

The Data Feeds tab shows information for setting up GPS communications. It controls the format for entering latitude and longitude data manually, and the format for showing time (in GMT/UTC or local time):

- Normally, FLDRS uses a checksum to validate incoming GPS data. If the incoming GPS data are corrupt, the invalid checksum prevents FLDRS from reading it. You may turn off validation to allow such data to load.
- Lat/Lon Format controls the way the fisherman enters positional information when no GPS signal is available. **Decimal minutes** requires the latitude and longitude in degrees, minutes, and thousandths of a minute. **Seconds** requires the latitude in degrees, minutes, seconds, and hundredths of a second.

To set up communication between FLDRS and the GPS unit:

1. In the GPS Comm Port field, select the port where FLDRS listens for the input from the GPS unit. To determine the correct COM port, use the Windows® Device Manager. You can reach the Device Manager by starting the Windows Control Panel, double-clicking on *System*, clicking the *Hardware* tab, and, finally, clicking the *Device Manager* button. For Windows 7, use the Start menu's Search Programs and Files box, searching for Device Manager.
2. Next, click the Test Devices button. In the test window, click Test GPS. If you see a stream of NMEA sentences in the test pane, the port is correct and you do not need to change anything.
3. If you do not see a stream of GPS data, or you receive an **Error opening port** message, change the COM port and try again. If you are certain that the COM port is correct, check that the GPS device is turned on and the connection is working.



4. Check the list of GPS sentences in the test pane. Use this list to configure FLDRS to get date, time, and position information from the GPS device; see "Sentences Tab" on page 20.

GPS polling

FLDRS can be configured to poll the GPS unit at set intervals, and to write GPS and/or depth sounder data to a file. To write data to the file, GPS polling must be turned on. By default, GPS polling is turned off.

GPS polling starts when the user starts a trip and remains active until the user completes a trip or exits from the Logbook.

To turn on GPS polling:

1. Start the FLDRS software and log in as an Administrator.
2. Click the *Software Setup* button.
3. In the Data Feeds tab, set the Enable GPS Polling option to **On (polling active)**.
4. Set the desired interval between GPS observations in the polling file. A 20-second polling frequency is recommended. Resolution can be decreased in post-processing, if desired. Higher polling frequencies may lead to the over-estimation of distance traveled.

Submitting the GPS polling file wirelessly

As of version 4.1.6, the GPS polling file can be submitted wirelessly if the computer has strong WIFI signal. To enable this feature, switch the “Send GPS file” radio button to “Yes”.

The GPS polling file

When GPS polling is turned on, FLDRS writes the captured data to a file stored in the polling file directory.

To set the directory where FLDRS stores GPS data:

1. Start the FLDRS software and log in as an Administrator.
2. Click the *Software Setup* button.

On the Data Feeds tab, the GPS Destination for Polling File field shows where FLDRS saves the GPS data.

FLDRS does not write any data if GPS polling is turned off. The satellite communication system does not automatically transmit the GPS polling file. This file must be manually removed from the GPS polling directory.

The field format of the GPS polling file is:

DATE, TIME (GMT), LATITUDE, LONGITUDE, SPEED (KM/HR), COURSE (TRUE), FIX, SAT_AVAIL, DEPTH (M), EFFORT_EVENT

Here is some sample data:

```
12/30/2015, 14:55:36, 4131.5610 N, 07040.4420 W, 000.0, 000.0, 2, 12, 0011.4,
12/30/2015, 14:55:56, 4131.5612 N, 07040.4422 W, 000.0, 000.0, 2, 12, 0011.3,
12/30/2015, 14:56:16, 4131.5611 N, 07040.4429 W, 000.0, 000.0, 2, 12, 0011.4,
12/30/2015, 14:56:20, 4131.5612 N, 07040.4431 W, 000.0, 000.0, 2, 12, 0011.5, End Set – Effort #2
12/30/2015, 14:56:36, 4131.5616 N, 07040.4432 W, 000.0, 000.0, 2, 12, 0012.5,
12/30/2015, 14:56:56, 4131.5615 N, 07040.4430 W, 000.0, 000.0, 2, 12, 0012.5,
12/30/2015, 14:57:16, 4131.5618 N, 07040.4424 W, 000.0, 000.0, 2, 12, 0012.3,
12/30/2015, 14:57:36, 4131.5619 N, 07040.4427 W, 000.0, 000.0, 2, 12, 0011.3,
12/30/2015, 14:57:56, 4131.5617 N, 07040.4428 W, 000.0, 000.0, 2, 12, 0012.4,
12/30/2015, 14:58:16, 4131.5613 N, 07040.4425 W, 000.0, 000.0, 2, 12, 0013.5,
12/30/2015, 14:58:36, 4131.5610 N, 07040.4419 W, 000.0, 000.0, 2, 12, 0013.4,
```

If no depth sounder is present, the depth readings in the GPS polling file are null.

Depth sounder

FLDRS can receive data directly from the vessel's depth sounder, if the depth sounder can send data via a serial port to the computer running the FLDRS application. FLDRS does not require a particular make or model of depth sounder. You must specify the sentence structure of the incoming depth sounder feed; see "Sentences Tab" on page 19.

If no depth sounder is available, set the sounder option to Off. When it is off, the Logbook's depth sounder activity indicator shows no reading and FLDRS does not write depth information to the GPS polling file.

In the Logbook's Software Setup, the Defaults tab includes radio buttons to enable the depth sounder. That Enable Depth Sounder option only affects whether the Average Depth field in the Trip tab automatically gets a value from the depth sounder feed. If Enable Depth Sounder is off, the fisherman must enter the depth fished manually. Typically, the Enable Depth Sounder option is set to On for bottom fishing, and Off for midwater or other fisheries where fishing depth should not be determined by bottom depth. FLDRS reads all depths from the depth sounder in meters; though users may view the data as feet or fathoms, the values are converted internally.

Setting up the depth sounder

To set up the depth sounder for FLDRS, add a serial port connection between the depth sounder and the computer running FLDRS. Then set the FLDRS application to read depth from that communications port.

To connect the depth sounder to the FLDRS application:

1. Connect the depth sounder and the computer running FLDRS and turn them both on.
2. Start the FLDRS software, log in as an Administrator, and click the Software Setup button.
3. In the Depth Sounder Comm Port field, select the port where FLDRS listens for the input from the depth sounder unit. To determine the correct COM port, use the Windows® Device Manager. You can reach the Device Manager by starting the Windows Control Panel, double-clicking on *System*, clicking the *Hardware* tab, and, finally, clicking the *Device Manager* button. For Windows 7, use the Start menu's Search Programs and Files box, searching for Device Manager.
4. Click the *Software Setup* button. The Data Feeds tab shows depth sounder setup information.
5. If desired, turn off checksum validation. Normally, FLDRS uses a checksum to validate incoming depth sounder data. If the incoming data are corrupt, the invalid checksum prevents FLDRS from reading it, so you may turn off validation to allow such data to load.
6. Click the *On (sounder active)* radio button to activate depth sounder polling.
7. Select the correct COM port. If you are unsure of the correct port, either use Windows Device Manager or start with COM1 and increment until you find the correct port:
 - Click the *Test Devices* button.
 - In the Test Serial Ports window, click the *Test Sounder* button. If you see a stream of data displaying the \$SDDBT sentence in the test pane, the port is correct and you do not need to change anything.
 - If you do not see a stream of data, or you receive an **Error opening port** message, click *End Test* and then *Exit* to close the test pane. Change the COM port

number, and then try testing again.

- If you are certain that the COM port is correct, check that the depth sounder is turned on.
8. To check the format, click *End Test* after the test pane fills. If the results are not what you expected, check the documentation for the device.

If you want to write depth data to the GPS polling file, turn GPS polling on; see “Data Feeds Tab” on page 12.

Data Export Tab

The Data Export tab contains options for:

- Trip transmission; see “Satellite communications and trip transmission” on page 17.
- The electronic signing ceremony; see “Digital signing ceremony” on page 17.
- File backup; see “Data backup” on page 18.
- Transaction logging; see “Transaction logging” on page 18.

Choosing a satellite communications system

Transmission capabilities via Skymate have been temporarily suspended due to Skymate's recent loss of certification in the Northeast Region.

FLDRS can use a satellite communications system to transmit a trip report. If no satellite communications system is available, FLDRS can still operate, but trip data can't be transmitted at sea. Data transmission via satellite is facilitated through the Vessel Monitoring System (VMS) and users are typically charged a transmission fee for this data transfer (contact the vessel's VMS vendor for specific costs).

Operating without a satellite communications system

If you select the **None** option, FLDRS makes no attempt to transmit the trip report. However, the data file is archived as usual in the local backup directory; see “Data backup” on page 8. You can remove the data manually from the computer using a USB drive or other memory device.

Using a satellite communication systems

If you set up and select one of the satellite communication systems, FLDRS transmits the trip report using one of these satellite communication systems.

First, install and configure the PC component of the satellite communication software on the computer running the FLDRS application. Next, connect the physical satellite communication unit to the computer running FLDRS, or network the FLDRS and the satellite communication computers together. Finally, start FLDRS and set the options for the satellite communications system.

Setting up FLDRS to use a satellite communication system

To have the FLDRS software send data to McMurdo FMCT/G (formerly Boatrac) or SkyMate:

1. Start FLDRS and log in as an Administrator.
2. Click the *Software Setup* button.
3. On the Data Export tab, set the Satellite Communication System to McMurdo FMCT/G or SkyMate.
4. Set the satellite communications and trip transmission options:

- Check that the file destination for the export file is correct for the satellite communications system you selected. For McMurdo FMCT/G, **C:\WBUI\OutBox** is usually appropriate. For SkyMate, it is usually **C:\NEFSC\FLDRS\LocalBackup**.
 - Check that the recipient address matches the email address provided by your Program Administrator. The default email address is evtr@noaa.gov; if this is incorrect, change the Recipient Address field, described below.
5. For Skymate transmission, the computer's network must be connected to the Skymate receiver via the password on the Skymate device.
 6. You can verify transmission success by contacting your logbook administrator.

Satellite communications and trip transmission

When the fisherman clicks the *Export Trip* button, FLDRS writes an export file to the local disk, compresses the file, and places this file in the appropriate directory for the satellite communications system that you selected; see “Choosing a satellite communications system” on page 16. The data file is not sent until the satellite communications system software is launched.

To set options for the data export file:

1. Start the FLDRS software and log in as an Administrator.
2. Click the *Software Setup* button.
3. On the Data Export tab, four fields influence the satellite communications system transmission:
 - The *Destination for Export File* field shows where FLDRS writes the export file. Although FLDRS offers this directory as a default, it can be changed.
 - The *Recipient Address* field shows the email address where the satellite communications system sends the export file. If you select the None option on the Satellite Comm Tab, FLDRS does not send the export file. The recipient address can be changed from the default.
 - The *Compression Executable Path* shows the program used to compress the trip data file before transmission.

Digital signing ceremony

For compliance with electronic Vessel Trip Reporting (eVTR) technical requirements, FLDRS includes an optional digital signing ceremony.

To require a user to complete the signing ceremony, check the Enable eVTR digital signing ceremony box.

When the user completes the ceremony, FLDRS writes a secure copy of the trip data to the directory specified in Destination for Secure File.

NMFS-supplied passwords

During the signing ceremony, the operator enters a NMFS-supplied password twice, correctly. The password must be between 8 and 12 characters long and must contain:

- At least one (1) capital alpha.
- At least one (1) lower case alpha.
- At least one (1) numeric.

- At least one (1) special character from the following list:
~ ! @ # \$ % ^ & * () _ - + = { } [] \ | : ; < > , . ? /.

If the first password entry does not match the second password entry, or the passwords entered do not match the specified format, the user receives an error message.

FLDRS does not validate the entered passwords against the NMFS password of record. It only checks to make sure the two passwords conform to the standards and match. More stringent password validation occurs on the NMFS servers after receipt of the trip report.

Data backup

When the fisherman clicks the *Export Trip* button on the Transmit tab, FLDRS automatically backs up the user and administrator configuration, trip data, and transmission data to flat files.

To set the directory where FLDRS backs up this data:

1. Start the FLDRS software and log in as an Administrator.
2. Click the *Software Setup* button.
3. On the Data Export tab, the Data Backup (export to local drive) field shows where FLDRS backs up the trip (*.gpg) files. This directory appears by default when the fisherman transmits a file, but the fisherman may override it. The folder where FLDRS backs up the user and administrator configuration, trip data, and transmission data is set in the System Backup section of the Data Export tab.
4. Choose a time interval between automatic backups by selecting it from the Backup Frequency dropdown menu.

You can also back up data manually; see “System data backup” on page 11.

Transaction logging

Administrators can track users' FLDRS activity by writing to a transaction log file each time the user visits a module.

To write data to the file, transaction logging must be turned on. By default, transaction logging is turned off.

Transaction logging starts when the user logs in, and remains active until the user exits from the Logbook. You can view the transaction log file; see “View the transaction log” on page 33.

To turn on transaction logging:

1. Start the FLDRS software and log in as an Administrator.
2. Click the *Software Setup* button.
3. Click the Data Export tab.
4. Set the Enable Logging of Transactions option to On (logging active). To set the directory where FLDRS stores transaction logging data:
5. Start the FLDRS software and log in as an Administrator.
6. Click the Software Setup button.
7. On the Data Export tab, the Destination for Logging File field shows where FLDRS saves the transaction data.

GNU Encryption

In order to encrypt a trip file, you must set the GNU Executable Path. To set the path:


1. Use the Browse button to navigate to the location where the GNU software is installed, select the folder, and click Open.
2. Switch to another tab and then back to the Data Export tab to make sure the file path is set.
3. Click the Setup Encryption button to configure GPG. You are prompted for the same parameters you gave in the installation: **5, y, quit**.

Configure Email

Click on the Configure Email button. By default, “Send Trip Files” is set to “No”. If wireless trip transmission is desired, select “Yes”.

Note: If during the export process, the computer does not have an internet connection, trips will not be sent. The trip file will be archived in the backup folder and can then be sent by going to “Managed Trips”, selecting the trip, clicking on “Transmissions”, then clicking on “Email Trip”.

To submit data over the internet, FLDRS must be configured with a user's valid email username and password.

The SMTP host name must be entered. For example, Gmail accounts would use “SMTP.gmail.com”. A list of common host values can be found by clicking on the .

A valid Port must be selected. Most often the port will be “587”. But if that value does not work, a list of other values is listed.

It is recommended that users test the email functionality by clicking on “Send test email”.

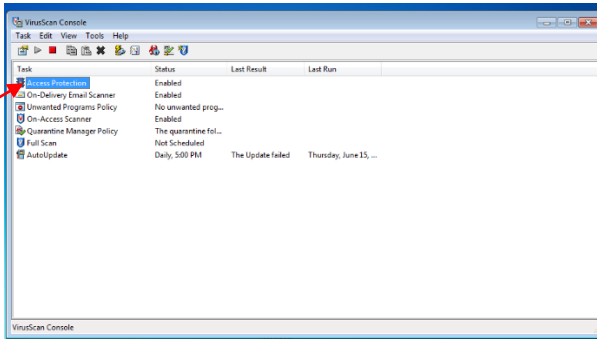
Note: Gmail users may need to configure email settings to 'allow access for less secure apps'.

GMAIL: Settings → Accounts and Import → Other Google Account settings → Connected apps & sites (under Sign-in & security) →

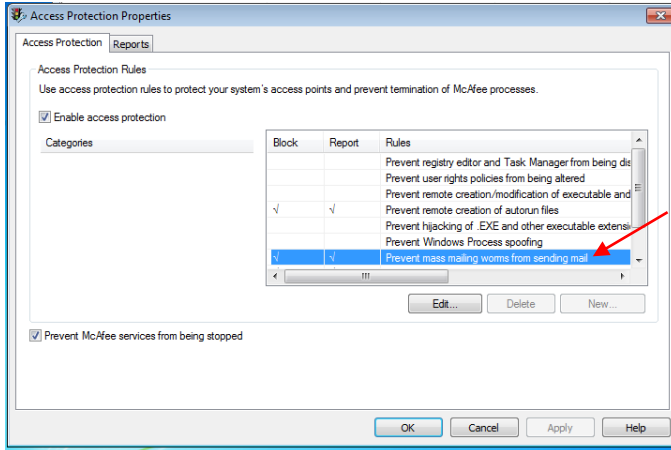
Switch the 'Allow less secure apps' toggle to 'ON'

Note: Submission via email can be inhibited by the computer's anti-virus software (if installed). If this occurs, FLDRS will need to be added to the list of programs approved by the anti-virus software. This process depends on the specific anti-virus software installed.

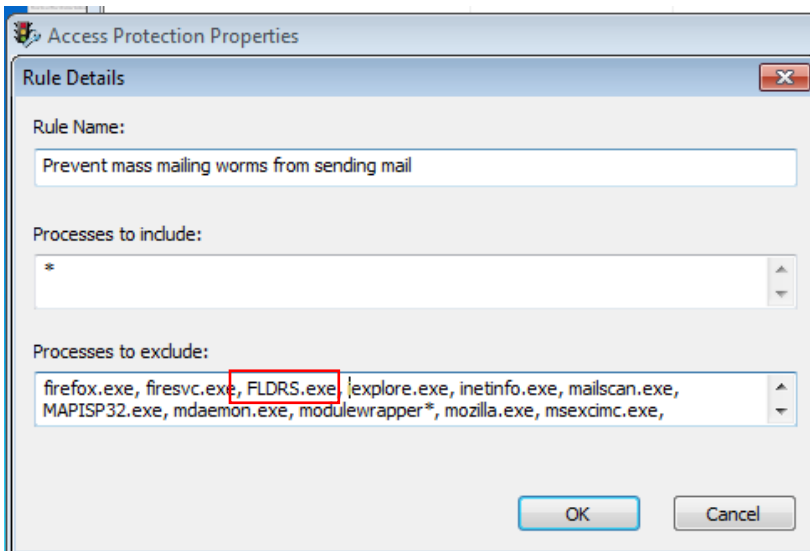
For computers with McAfee anti-virus, open the **VirusScan Console**. Right-click on “Access Scan” and select “Properties”.



On the “Access Protection” tab, highlight “Prevent mass mailing worms from sending mail” and select “Edit”.



In the “Processes to exclude” section, add “FLDRS.exe” to the list. Make sure there is a comma afterwards if not inserted at the end of the list. Click OK when finished.



Sentences Tab

Use this tab to set up the NMEA sentences that FLDRS expects to receive from the GPS unit.

For each string in the Sentence Type list on the left, define the content on the right.

Many of the sentences contain duplicate information, but the FLDRS software scans all these sentences so that it can accommodate a variety of GPS units. If duplicate information is provided, FLDRS takes the information from the first available sentence.

At a minimum, FLDRS requires sentences that provide the date, time, latitude, longitude, and the fix strength value. The optional values include the number of satellites in view (and indicator for the quality of fix), the course (true), the speed (knots), and the depth (m). If you select a depth sentence that requires an offset to record true bottom depth (m), then you should record the offset value in the Depth Correction (m) position. For example, if you use the \$SDDBT (depth below transducer) sentence to record bottom depth, and the transducer sits two meters below the surface, you would set the Depth Correction (m) value to 2.

FLDRS saves the NMEA string data you enter here in the Sentences table. You can propagate the sentence settings to other FLDRS applications by exporting the Sentences table to a file using Table Import, copying the exported file to the other computer, and then importing the file into FLDRS on the other computer; see “Table Import” on page 8.

Users Tab

An Administrator can add, delete, or change privileges for all users. The Administrator can also set passwords. A FLDRS user may have either Administrator privileges or Logbook privileges.

Changing user access privileges

To change access privileges for a FLDRS user:

1. Start the FLDRS software and log in as an Administrator.
2. Click the Software Setup button.
3. Click the Users tab.
4. In the list on the left, highlight the user name. The properties of that user name appear on the right.
5. Use the radio buttons to control access to the FLDRS modules.

FLDRS saves the changes when you click on another user name in the list, click *New User*, click on another tab, or click *Exit Setup*.

Adding a new user

When you add a new user, you must provide a password for the user and set access privileges. User passwords must contain at least eight numbers or letters. At least one character must be a non-numeric special character (!, \$, &). It is strongly suggested that the FLDRS login differ from the NMFS-supplied electronic VTR password; see 'Digital signing ceremony' on page 17.

To add a new user:

1. Start the FLDRS software and log in as an Administrator.
2. Click the Software Setup button.
3. Click the Users tab.
4. Click the *New User* button at the bottom of the window.
5. Complete the fields to give a name and password to the new user.
6. Use the radio buttons to control access to the FLDRS modules.

FLDRS saves the changes when you click on another user name in the list, click *New User* again, click on another tab, or click *Exit Setup*.

Deleting a user

You can delete any user except the last established Administrator. There must always be one FLDRS Administrator on record, to avoid accidentally locking Administrators out of FLDRS.

To delete a user from FLDRS:

1. Start the FLDRS software and log in as an Administrator.
2. Click the *Software Setup* button.
3. Click the Users tab.
4. In the list on the left, highlight the user name. The properties of that user appear on the right.
5. Click the *Delete User* button at the bottom of the window.
6. Click Yes to confirm the deletion, or No to cancel. You cannot delete the last Administrator account.

Program Terms Tab

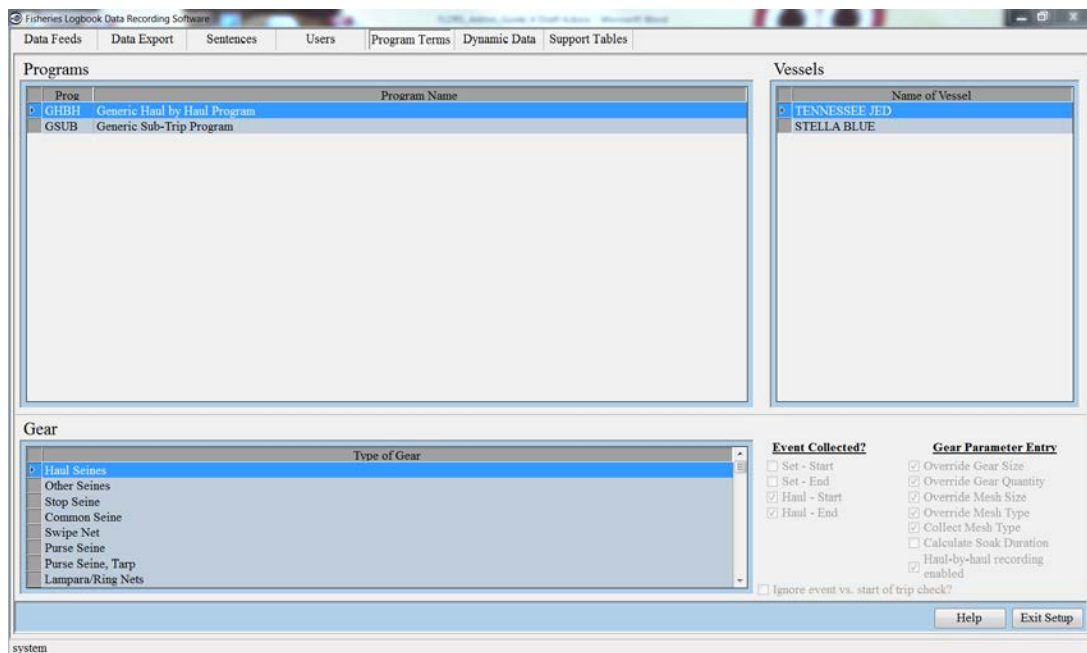
FLDRS uses fishery programs to set up and control options for collecting effort data in the Logbook. The programs are flexible, so they can meet the various data collection requirements that may exist across fleets, vessels, and gears. Within each program, different data collection rules can apply to different gear types. A vessel may participate in only one program per trip, and must be granted access to participate. The eVTR Database Administrator sets the data collection rules for the program. The rules cannot be changed using the FLDRS application, but you can view them using the Program Terms tab.

The Program Terms tab shows the list of vessels that participate, the list of gear types used in the program, the gear handling events that the program collects (see “Gear handling events” on page 24), and its gear parameter rules (see “Gear parameter rules” on page 24).

Using the Program Terms tab

The upper left side of the Program Terms tab lists the valid programs. Clicking on a program shows the details of the program. The vessels that may participate in that program appear on the upper right, and the gears that those vessels may use on the lower left. Clicking on a gear name shows the data collection rules for that particular gear type within the selected program. Gear can be used in different programs, with different data collection rules in each program.

Example program



Here is an explanation of the program in the example:

- The eVTR Database Administrator creates the program named **Generic Haul by Haul**.
- The eVTR Database Administrator grants access to the program for two vessels, **F/V Stella Blue** and **F/V Tennessee Jed**.
- FLDRS lists the allowed gear types for the **F/V Stella Blue** and the **F/V Tennessee Jed** based on the program code.
- FLDRS displays which gear events and gear parameters are collected based of the vessel and program selected. These values are set by the support tables and cannot be altered.

Gear handling events

A program can collect data for four gear-handling events, these options are set by the database based on vessel and program code.

- **Set—Start:** the user must provide the time, date, and position when the vessel starts to set the gear, by clicking the Set—Start button on the Effort tab.
- **Set—End:** the user must provide the time, date, and position when the vessel finished setting the gear, by clicking the Set—End button on the Effort tab.
- **Haul—Start:** the user must provide the time, date, and position when the vessel began to haul the gear, by clicking the Haul—Start button on the Effort tab.
- **Haul—End:** the user must provide the time, date, and position when the vessel finished hauling the gear, by clicking the Haul—End button on the Effort tab.

Gear parameter rules

These options are set by the database based on vessel and program code.

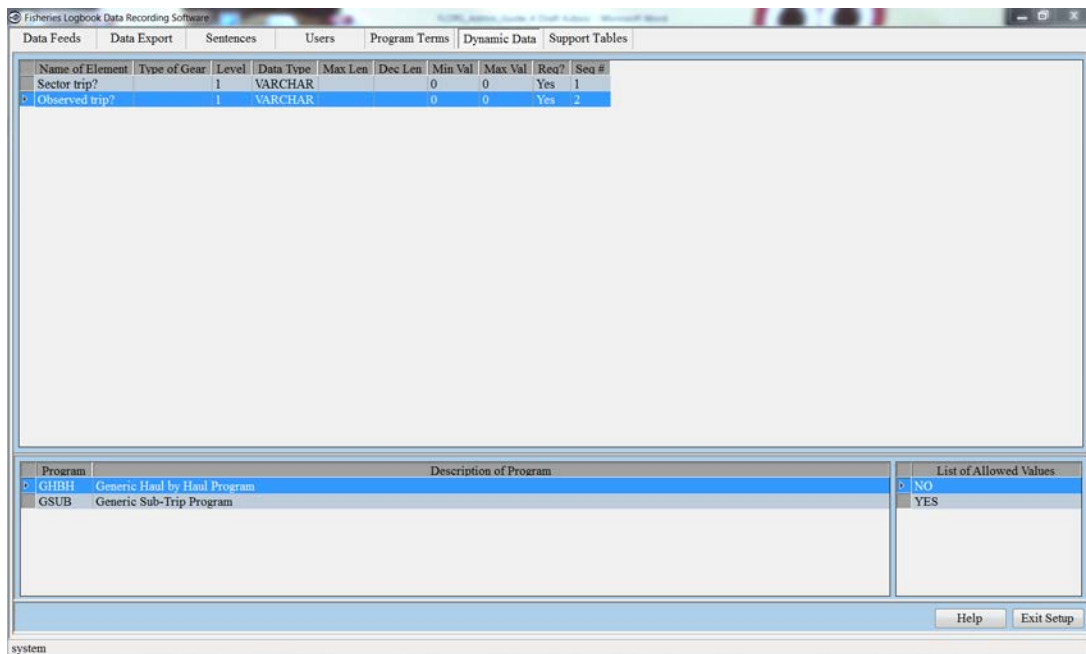
- **Override Gear Size:** the user can specify a different gear size in the Effort tab.
- **Override Gear Quantity:** the user can specify a different gear quantity in the Effort tab.
- **Override Mesh Size:** the user can specify a different mesh size in the Effort tab.
- **Override Mesh Type:** the user can specify a different mesh type in the Effort tab.
- **Calculate Soak Duration:** the Logbook automatically calculates the soak/haul duration for a particular haul. This option is available if the program collects both the Set—End and Haul—Start events.
- **Haul-by-haul recording enabled:** each haul is recorded as a separate effort. The Number of Hauls field does not appear, and FLDRS sets that field's value to 1 for each effort record.

Dynamic Data Tab

FLDRS allows fishermen to provide data that extend beyond the Logbook's core set of data elements. These data are flexible in nature, and can vary from program to program, so they are referred to as dynamic data. The eVTR Database Administrator sets up the dynamic data collection rules, which cannot be changed within the FLDRS application. However, you can view the rules.

Use the Dynamic Data tab to view the dynamic data elements collected for a particular program. The list on the bottom left of the window shows all the programs defined in the Program Terms tab. Click on a program name to see the dynamic data elements it collects. The attributes of that element appear in the top half of the window. If an element lets the user make a choice, clicking on the element name shows those choices on the lower right side of the window.

Example of dynamic data rules



This window shows the Generic Haul by Haul program. The **Observed Trip** dynamic data element is highlighted, and the user's possible choices appear on the lower right side of the window.

Here is an explanation of the dynamic data collection elements in this example:

- The program type is selected in the list on the lower left.
- The dynamic data elements collected for the selected program appear in the top half of the window, along with their attributes. For example, FLDRS collects the **Observed Trip** element at the trip level (the fisherman enters it once for the entire trip). The other attributes of this element control how it is stored within the FLDRS database. For example, **Observed Trip** is a required element (the Req? attribute is set to **Yes**). In the dialog box that prompts the fisherman for dynamic data at the trip level, **Observed Trip** is the second item (the Seq attribute is set to 2). For a complete list of attributes and their meanings, see below.
- The list of possible values for the **Observed Trip** element appears on the lower right. This element is a lookup list, and the user can choose **No** or **Yes**.

Attributes of the dynamic data elements

Here is a complete list of the attributes for a dynamic data element.

Field	Meaning
Name of Element	The name of the dynamic data element. In the Logbook, the name labels the field where the fisherman enters the data.
Type of Gear	The gear types for which this data is collected. The data element applies only to the gear listed in this attribute. If this attribute is blank, then the element applies to all efforts, regardless of gear type. This option is only available for dynamic data collected at the Effort level.
Level	When the element is collected (Trip, Effort, Retained/Discarded, Landing, Apportionment). The level corresponds roughly to the major functions (tabs) of the Logbook.
Data Type	Either numeric (NUMBER) or character (VARCHAR).
Max Len	The maximum number of characters or numbers that the user may enter for the element.
Dec Len	For numeric data elements, the level of decimal precision for the collected data.
Min Val	For numeric data elements, the minimum value of the acceptable range of values. If the user enters a value below the minimum, FLDRS warns the user in an informational message. The user can override the warning.
Max Val	For numeric data elements, the maximum value for the acceptable range of values. If the user enters a value greater than the maximum, FLDRS warns the user in a message. The user can override the warning.
Req?	Whether the data element is required or optional. If the element is required, the user cannot complete the trip without entering a value for the element.
Seq #	The sorting order for the elements. Elements appear on the entry dialog box in ascending order; lower sequence numbers appear nearer the top of the dialog box.

You cannot edit the dynamic data in this window. If changes are needed to the dynamic data, consult the eVTR Database Administrator. If changes are made, load the updates; see “Table Import” on page 8.

Support Tables Tab

Use the Support Tables tab to see the contents of the tables listed vertically on the right side of the window.

For any support table in this tab, you can hide irrelevant entries from the Logbook user by clicking on the values in the Display? field. A Logbook user can select any record that has a display value of **True**. Records with the Display? value **False** do not appear in the Logbook.

If you need to reload a support table, see “Reloading a support table” on page 10.

Operators Tab

The Operators tab shows the full list of operators available to Logbook users. You cannot edit the list of operators, or change any values for a particular operator.

However, you can control the list of operators that the Logbook user sees. All operators with the Display? attribute set to **True** appear in the Operators tab of the Logbook's Software Setup.

To modify the list of operators available in the Logbook:

1. Start the FLDRS software and log in as an Administrator.
2. Click the *Software Setup* button.
3. Click the Support Tables tab.
4. On the right side of the window, click the Operators vertical tab.

The list shows all the operators in the table. The record for each operator includes a display property, which controls whether the operator name is visible to the fisherman. If the display property is set to **True**, the fisherman sees that operator in the Operator tab of the Logbook's Software Setup.

5. To change the display property for an operator, double-click on its *Display?* field. The display state toggles between **True** and **False**.
6. Repeat the previous step for every operator you wish to exclude from the fisherman's view.

Your choices are saved when you click on another tab, or click the *Exit Setup* button.

Before using the Logbook to enter trip data, check that the operator list is appropriate for the specific installation. Start FLDRS, and log in to the Logbook. In the Logbook's Software Setup, click the Operator tab, and make sure that the desired operator(s) is available.

Vessels Tab

The Vessels tab shows the full list of vessels available to users of the Logbook. You cannot edit the list of vessels, or change the values for a particular vessel.

However, you can control the list of vessels that the Logbook user sees in Software Setup. All vessels with the Display? attribute set to **True** appear in the Vessels tab of the Logbook's Software Setup.

To modify the list of vessels available through the Logbook:

1. Start the FLDRS software and log in as an Administrator.
2. Click the *Software Setup* button.
3. Click the Support Tables tab.
4. On the right side of the window, click the Vessels vertical tab.

The list shows all the vessels in the table. The record for each vessel includes a display property, which controls whether the vessel name is visible to the fisherman. If the display property is set to **True**, the fisherman sees that vessel in the Vessels tab of the Logbook's Software Setup.

5. To change the display property for a vessel, double-click on its *Display?* field. The display state toggles between **True** and **False**.
6. Repeat the previous step for every vessel you wish to exclude from the fisherman's view.

FLDRS saves your choices when you click on another tab, or click the *Exit Setup* button.

Before using the Logbook to enter trip data check that the vessel list is appropriate for the specific installation. Log in to the Logbook, and use the Logbook's Software Setup. In the Vessel tab, make sure that the desired vessel(s) is available.

Species Tab

The Species support table stores the full list of species that FLDRS can make available to Logbook users. Because the list is very long, the Administrator can (and should) use the Species tab to hide irrelevant species from the fisherman.

You can control the species names that the Logbook user sees when adding and deleting species, or setting up species lists. Only species with the *Display?* attribute set to **True** appear in the user's lists of species.

To modify the list of species that appear in the Logbook:

1. Start the FLDRS software and log in as an Administrator.
2. Click the *Software Setup* button.
3. Click the Support Tables tab.
4. On the right side of the window, click the Species vertical tab.

The list shows all the species in the table. The record for each species includes a display property, which controls whether the species name is visible to the fisherman. If the display property is set to **True**, the fisherman sees that species in the lists in the Logbook's Software Setup.

5. To change the display property for a species, double-click on its *Display?* field. The display state toggles between **True** and **False**.
6. Repeat the previous step for every species you wish to exclude from the fisherman's view.

FLDRS saves your choices when you click on another tab, or click the *Exit Setup* button.

TIP: To restrict your view to a particular category of species, click the dropdown list next to the *All Categories* button at the top of the window. Selecting an item from the dropdown list restricts the list in the main window to show only species in that category.

Before using the Logbook to enter trip data check that the species list is appropriate for the specific installation. Log into the Logbook, and use the Logbook's Software Setup. In the Species List tab, click the *Add Species* button to see the list of species that the fisherman can select.

Gear Tab

The Gear tab shows the full list of gear types available to users of the Logbook. You cannot

edit the list of gear types, or change the values for a particular gear type.

However, you can control the list of gear types that the Logbook user sees in Software Setup. All gear types with the *Display?* attribute set to **True** appear in the Gear tab of the Logbook's Software Setup.

To modify the list of gear types available through the Logbook:

1. Start the FLDRS software and log in as an Administrator.
2. Click the *Software Setup* button.
3. Click the Support Tables tab.
4. On the right side of the window, click the Gear vertical tab.

The list shows all the gear types in the table. The record for each gear type includes a display property, which controls whether the gear type is visible to the fisherman. If the display property is set to **True**, the Logbook user sees that gear type in the Gear tab of the Logbook's Software Setup.

5. To change the display property for a gear type, double-click on its *Display?* field. The display state toggles between **True** and **False**.
6. Repeat the previous step for every gear type you wish to exclude from the Logbook user's view.

FLDRS saves your choices when you click on another tab, or click the *Exit Setup* button.

Before using the Logbook to enter trip data, make sure that the gear list is appropriate for the specific installation. Log into the Logbook, and use the Logbook's Software Setup. In the Gear tab, the list on the upper right shows all the types of gear that the Logbook user can select.

TIP: To restrict your view to a particular category of gear, click the dropdown list next to the *All Categories* button at the top of the window. Selecting an item from the dropdown list restricts the list in the main window to show only gear in that category.

Dealers Tab

The Dealers tab shows the full list of dealers available to users of the Logbook. You cannot edit the list of dealers, or change the values for a particular dealer.

However, you can control the list of dealers that the Logbook user sees in Software Setup. All dealers with the *Display?* attribute set to **True** appear in the Dealers tab of the Logbook's Software Setup.

To modify the list of dealers available through the Logbook:

1. Start the FLDRS software and log in as an Administrator.
2. Click the *Software Setup* button.
3. Click the Support Tables tab.
4. On the right side of the window, click the Dealers vertical tab.

The list shows all the dealers in the table. The record for each dealer includes a display property, which controls whether the dealer name is visible to the Logbook user. If the display property is set to **True**, the fisherman sees that dealer in the Dealers tab of the Logbook's Software Setup, and also when apportioning species in the Landings tab.

5. To change the display property for a dealer, double-click on its *Display?* field. The

display state toggles between **True** and **False**.

6. Repeat the previous step for every dealer you wish to exclude from the fisherman's view.

FLDRS saves your choices when you click on another tab, or click the *Exit Setup* button.

Before using the Logbook to enter trip data, check that the dealer list is appropriate for the specific installation. To review the names of the dealers, log in to the Logbook, click *Software Setup*, and then the Dealers tab.

Ports Tab

The Ports tab shows the full list of ports available to users of the Logbook. You cannot edit the list of ports, or change the values for a particular port.

However, you can control the list of ports that the Logbook user sees in Software Setup. All ports with the Display? attribute set to **True** appear in the Ports tab of the Logbook's Software Setup.

To modify the list of dealers available through the Logbook:

1. Start the FLDRS software and log in as an Administrator.
2. Click the *Software Setup* button.
3. Click the Support Tables tab.
4. On the right side of the window, click the Ports vertical tab.

The list shows all the ports in the table. The record for each port includes a display property, which controls whether the port name is visible to the fisherman. If the display property is set to **True**, the fisherman sees that port in the Ports tab of the Logbook's Software Setup.

5. To change the display property for a port, double-click on its *Display?* field. The display state toggles between **True** and **False**.
6. Repeat the previous step for every port you wish to exclude from the fisherman's view.

FLDRS saves your choices when you click on another tab, or click the *Exit Setup* button.

Before using the Logbook to enter trip data, check that the port list is appropriate for the specific installation. Log in to the Logbook, and use Software Setup. In the Ports tab, review the names of the ports.

Dispositions Tab

The Dispositions tab shows the full list of dispositions for the retained, discarded, and apportioned catch that are available to users of the Logbook. Fishermen use the dispositions to describe the fate of the fish.

You cannot edit the lists of dispositions, move them between categories, or change the values for a particular disposition.

However, you can control the list of dispositions that the fisherman sees in the Logbook's Software Setup. All dispositions with the Display? attribute set to **True** appear in the Logbook's Landings tab, and also in the Logbook's Species List tab.

To modify the list of dispositions that are available through the Logbook:

1. Start the FLDRS software and log in as an Administrator.
2. Click the *Software Setup* button.
3. Click the Support Tables tab.

4. On the right side of the window, click the Dispositions vertical tab.

The list shows all the dispositions in the table, for kept species, discarded species, and for landing apportionment. The record for each disposition includes a display property, which controls whether the disposition is visible to the fisherman. If the display property is set to **True**, the fisherman can use that disposition code in the Logbook.

5. To change the display property for a disposition, double-click on its *Display?* field. The display state toggles between **True** and **False**.
6. Repeat the previous step for every disposition you wish to exclude from the fisherman's view.

FLDRS saves your choices when you click on another tab, or click the *Exit Setup* button.

Before using the Logbook to enter trip data, check that the dispositions in the species list are appropriate for the specific installation. Log in to the Logbook, and use Software Setup. In the Species Lists tab, double-click on any Disposition field to see the list of disposition codes.

Areas Tab

The Areas tab shows the full list of statistical areas. You cannot edit the lists of areas or change the values for a particular area.

However, you can control the list of areas that the Logbook user sees in Software Setup. All statistical areas with the Display? attribute set to **True** appear in the Logbook's Effort tab.

To modify the list of statistical areas available in the Logbook:

1. Start the FLDRS software and log in as an Administrator.
2. Click the *Software Setup* button.
3. Click the Support Tables tab.
4. On the right side of the window, click the Areas vertical tab.

The list shows all the statistical areas defined in the table. The record for each area includes a display property, which controls whether the area is available to the fisherman. If the display property is set to **True**, the fisherman can report catch made in that statistical area in the Logbook.

5. To change the display property for a statistical area, double-click on its *Display?* field. The display state toggles between **True** and **False**.
6. Repeat the previous step for every statistical area you wish to exclude from the fisherman's view.

FLDRS saves your choices when you click on another tab, or click the *Exit Setup* button.

Before using the Logbook to enter trip data, check that the species list is appropriate for the specific installation. Log in to the Logbook, and begin a trip. In the Effort tab, click on the Stat Area field and review the list of statistical areas.

Setting User Defaults

A fisherman cannot record any trips until defaults are set up. Log in to the Logbook and use Software Setup to configure the defaults; see the FLDRS user manual for instructions.

Manage Trips

Use Manage Trips to view old trips, reports, back up trip data, and view the transaction log.

View or print trip reports

FLDRS keeps one saved trip and all recently transmitted trips. The transmitted trips can't be edited.

To view an old trip report:

1. On the main FLDRS window, click the *Manage Trips* button. A list of trips appears.
2. Highlight the trip report and then click the *View Reports* button.
3. FLDRS gives you options to:
 - View the trip report in a format similar to a paper VTR.
 - Save it as an Adobe PDF file.
 - View a catch summary, which lists the haul weights of all the species recorded during a particular period of time. It includes catch data from all completed trips in the date range, along with the current trip.
4. Choose a report type and click the *OK* button. For the catch report, FLDRS prompts you to select a range of dates. The report includes amounts for all the species you kept and discarded for all trips during the range of dates you selected.

Delete old trips

Only an Administrator can delete trips.

The delete trip function is intended to remove test/training/corrupt/garbage trips from the system. Deletion of valid fishing trips will also remove all 'legal' records of those trips on board the vessel, if the vessel is boarded by USCG they will be out of compliance and the vessel could be fined.

In making the decision to delete a trip, keep in mind that the data from a deleted trip is no longer available for analysis and compliance.

To delete old trips:

1. Log in as an Administrator, and click the *Manage Trips* button. A list of trips appears.
2. Highlight the trip report and then click the *Delete Trip* button. When you click *Yes* on the warning message, FLDRS deletes the trip report from the database. Repeat this step to delete another trip.
3. Click the *Exit* button when you are done.

Retransmit or re-export a trip

If a trip report that was transmitted using a satellite communication system fails to reach its destination, you can retransmit the report. FLDRS just resends the encrypted file stored in the backup folder. However, if that encrypted file is corrupted or cannot be found, you can re-export it, which regenerates the report from the database and then transmits it.

For partial trips, the Trip Exported? field always records No, regardless of the transmission status.

To retransmit a report:

1. Make sure that the satellite communication system software has been launched and is running properly.

2. On the main FLDRS window, click the *Manage Trips* button.
3. Highlight the trip to resend and click the *Transmissions* button. A list of trips appears, along with their status.
4. Click the *Re-Transmit* button.

FLDRS reports that the data has been resent. However, since it relies on the satellite communication system software, the actual transmission may not occur instantly. If the trip report is not received, see “Troubleshooting” on page 34.

To re-export a report:

1. Make sure that the satellite communication system software has been launched and is running properly.
2. On the main FLDRS window, click the *Manage Trips* button.
3. Highlight the trip to resend and click the *Transmissions* button. A list of trips appears, along with their status.
4. Click the *Re-Export* button.

FLDRS rebuilds the trip report by querying the database. It may prompt you to enter and confirm a NMFS-supplied password, (see “Digital signing ceremony” on page 17), and then report that the data has been resent.

However, since FLDRS relies on the satellite communication system software, the actual transmission may not occur instantly. If the trip report is not received, see “Troubleshooting” on page 34.

View a list of transmitted trips

If a fisherman transmitted a trip report, you can view the transmission history for that trip. For each trip, the Transmission History dialog box gives the date and time of transmission, along with summary data to help you identify a particular trip.

To see the transmission history, highlight the trip and click the *Transmissions* button. The Transmission History dialog box appears.

If a complete trip was transmitted only once (there were no partial trips), the top section shows a single record for the transmission, with the middle and bottom sections listing the efforts and landing records for that transmission.

If there were partial transmissions for the trip, the top section lists all the partial trip transmissions. Selecting a partial trip transmission in the top section fills the middle and bottom sections with the effort and landing records sent in that partial trip transmission.

To send a trip report again, highlight the vessel in the list at the top of the dialog box, and then click the *Retransmit* button.

If the trip report is not received, see “Troubleshooting” on page 34.

View the transaction log

Administrators can track users' FLDRS activity by writing to a transaction log file each time the user visits a module. Transaction logging starts when the user logs in, and continues until the user exits from the Logbook.

To view the transaction log for a trip, highlight its name in the Manage Trips window, and click *Transaction Log*. You can view, back up, or clear the log file using the buttons on the Transaction Log window.

To turn logging on or off, see “Data Export Tab” on page 16.

Troubleshooting

GPS status says “GPS Signal: GPS Off”

FLDRS is not receiving a signal from the GPS.

First, log out of the logbook, but don't click the *Exit* button on the FLDRS home page. Click the *Login* button on the home page. Logging back in should reinitiate the GPS connection if the software dropped the connection.

If that doesn't work, check the GPS feed; make sure the GPS unit is turned on and then check cables and connections.

Physically unplug the USB cable that connects the GPS unit to the computer, and then plug it back in to force the computer to reset the port.

Finally, try restarting the computer that is running FLDRS.

If necessary, have the fisherman use the globe icons on the Effort tab to enter the locations manually.

Jumping cursor when GPS is connected

Microsoft® has discovered a jumping cursor problem, caused by a Windows® bug that detects a connected GPS as a mouse. Microsoft support supplied these directions to correct the problem:

1. Turn off the GPS and close the mapping software.
2. Right-click on the My Computer icon and select Properties.
3. Select the Hardware tab, and click the Device Manager button.
4. Next to "Mice and other pointing devices," click the plus (+) button to expand this list. You should see at least two items listed. One is the mouse you normally use, and the other is probably listed as "Microsoft Serial Ball Point."
5. Highlight “Microsoft Serial Ball Point” and click the Disable button at the top of the window (it is usually the second button from the right; hover the cursor over it and read the ToolTip to verify)
6. In the confirmation message window that appears, click Yes.
7. Close the Device Manager.
8. Plug in and turn on your GPS.
9. Restart the mapping software.

Depth sounder says FA but no depth values appear

FLDRS is not receiving a signal from the depth sounder.

First, log out of FLDRS, but don't click the *Exit* button on the FLDRS home page. Click the *Login* button on the home page. Logging back in should reinitiate the depth sounder connection if the software dropped the connection.

If that doesn't work, check the depth sounder feed; make sure the unit is turned on, and then check cables and connections.

Finally, try restarting the computer that is running FLDRS.

Exported files do not arrive when using SkyMate®

If a file does not arrive at the email address specified in the Data Export tab, try these steps:

1. Open the directory you specified in the Destination for Export file field and look for the file. The file is named with the trip ID and the extension ENC (e.g., **12345606051009.enc**). SkyMate prefixes a sent file with **SENT...**, so if your file lacks that prefix, SkyMate has not recognized it yet.
2. Make sure the SkyMate software is running on the computer running the FLDRS application. You can only transmit files from the FLDRS to the SkyMate unit if both FLDRS and SkyMate are running on the same computer.
3. If the SkyMate software is running and the file still has not been renamed with the **SENT...** prefix, check the communication with the SkyMate unit. Files can only be renamed if the PC can communicate with the SkyMate unit.
4. If the file has been renamed with the SENT prefix but has not been received, check the email outbox, usually **C:\Program Files\skymate\outbox**. Any messages listed in the email outbox are pending delivery. They remain in the outbox until the SkyMate unit receives confirmation from SkyMate that the messages have been received.
5. If the file has been renamed in the dropbox and is not listed in the outbox, check the sent directory, usually **C:\Program Files\skymate\sent**. If the message is listed in this directory, it has left the transmit queue and has been sent from the system.
6. If the file is not listed in the outbox, check the inbox. Occasionally, SkyMate may send an email back to the unit if an email cannot be transmitted. This may happen if the SkyMate unit was powered down before the file could be fully transmitted.

Exported files do not arrive when using McMurdo FMCT/G (formerly Boatracs®)

If the file does not appear in the recipient inbox, try these steps:

1. Check that WBUI's long file name command is active. FLDRS uses the 14-character trip ID in its file names.
2. Open the **C:\WBUI\OutBox** directory and look for the filename. The file name has 14 characters and ends in **_outer.zip** (for example, **12345609031815_1_outer.zip**). If the file is still in the main **C:\WBUI\OutBox** directory, it has not yet been sent to the FMCT unit.
3. Make sure the WBUI software is running. You can only transmit files from the PC to the FMCT unit if WBUI is running.
4. Another Boatracs requirement which may cause transmission issues is activation of the Boatracs MCT data port. This can only be performed by contacting Boatracs directly, the data port on the MCT unit is locked by default, and will remain so unless Boatracs is contacted regarding unlock of the port to facilitate the submission of VTR data via Boatracs MCT.
5. If WBUI is running and the file has not moved to any of the three subfolders, check the directory scan rate. In the WBUI software, choose *Options, Configuration* and set the **Check for files to send automatically every _ minute** to 1 (one).
6. If the file is not in the main **C:\WBUI\OutBox** directory, check the **badfile** folder. If the file is here, then there is something wrong with the file. McMurdo FMCT/G does not send files larger than 20KB, so check the file size. If the file is less than 20KB, double-check the **wbui.ini** file again and make sure **enablelongfilenames=1**.
7. If the file is not in the **badfile** folder, check the **nak_sav** folder. If the file is there, check the **File Segment** reading in the WBUI software. If the value is not 0 (zero), the file is in

the process of being transmitted. Satellite communications may be poor in the particular location, and the antenna may have trouble establishing a strong connection. Check the M0 reading on the MCT unit. In the New England area, the M0 reading should be > 15.

8. If the file is not in the **nak_sav** folder, check the **files** folder. If the file is there, it has probably already been transmitted. Check the sent message directory (In the WBUI application, choose *Send, Sent Message Directory*). If the file is in the **files** directory, it has been sent to McMurdo FMCT/G.
9. Open the sent message directory by choosing *Send, Sent Message Directory*. Check the **Stat** column in the list. If the status is **ACKD**, the message has been received by McMurdo FMCT/G and the MCT unit has received confirmation of its receipt. Other possible status are: **PEND** (the message is being sent to the MCT unit); and **SENT** (the message has been transmitted, but confirmation of its receipt has not yet been received).
10. If the file is listed as **ACKD** but does not show up in the recipient account, or if its status remains **SENT** for a long period of time, the file may not have been received by McMurdo FMCT/G in its entirety, or the vessel's account may not be set up to transmit data files to the recipient email account. Call McMurdo FMCT/G technical support, and be sure to have the vessel's MCT unit number ready. The phone number for the 24-hour Networks Operations Center is 1-800-262-8722.

The MCT number appears on WBUI's main window. To see it on the LCD display, press **View Status** and then the *Down* button.

FLDRS Error Messages

<i>Message</i>	<i>Solution</i>
A previous transmission exists for this trip. Deleting this trip will require completion of the signing ceremony	Because data from this trip has already been transmitted, the signing ceremony must be performed again to confirm trip deletion. The deletion notice that is generated must be transmitted to GARFO.
Signing ceremony failed	You have used up all your signing attempts. Reinitiate the signing ceremony to complete transmission.
Location already in decimal format.	The location is already in decimal format. You do not have to enter it in decimal format.
FLDRS 4.1.9 already running!	Only one instance of FLDRS 4.1.9 can be open at a time.
Encryption process failed. To export trip, install GNU encryption software then re-export trip through Manage Trips.	The encryption process failed but the trip information has been saved. Confirm that the encryption software is installed correctly and that the application path is correct in the Administration Software Setup's Data Export tab. You can then re-transmit the trip using Managed Trips. Additionally, ensure the GNU encryption has been properly configured (Page 17)
File zip process failed. Make sure 7-Zip software is properly installed.	Confirm that 7-Zip is properly installed and that the application path is set correctly in the Administration Software Setup's Data Export tab. The current trip has been encrypted and stored in the local backup folder in .gpg form.
Error -- Effort # <Effort Number> is missing soak time value	Enter a valid soak time.
Error -- Effort # <Effort Number> hours is missing a time value	Enter a valid hour value (0-23).
Error -- Effort # <Effort Number> minutes is missing a time value	Enter a valid minute value (0-59).
Error -- Effort # <Effort Number> is missing average depth value	Enter a valid depth value.
Error -- Effort # <Effort Number> is missing gear quantity value	Enter a valid gear quantity value.
Error -- Effort # <Effort Number> is missing haul count value	Enter a valid haul count value.
Error -- Effort # <Effort Number> effort times are out of sequence	Check that the effort times and durations are correct.
Error -- Effort # <Effort Number> is missing date/time value	Enter a valid date/time value.
Error -- Effort # <Effort Number> is missing location value	Enter a valid location value.
Error -- Effort # <Effort Number> contains no catch or discard entries	Enter valid catch and/or discard data. If effort is a water haul, click on on the Water Haul button.
Error -- Effort # <Effort Number> is missing required catch/discard dynamic data element	Enter in values for required dynamic data elements.

<i>Message</i>	<i>Solution</i>
Error -- Required effort element not entered for effort # <Effort Number>	Go to the Effort tab, select the effort, click the Additional Data button, and enter the required data.
start time of effort <Effort Start Time> occurs before start of trip <Trip Start Time>	There is a conflict in dates and/or times between the start of the trip and the start of the effort. Note the effort number, then go to the Effort tab and check the Set—Start time and date. If they are correct, go to the Trip tab and check the departure date and time.
start time of effort <Effort Start Time> occurs after end of trip <Trip End Time>	There is a conflict in dates and/or times between the end of the trip and the start of the effort. Note the effort number, then go to the Effort tab and check the Set—Start time and date. If they are correct, go to the Landings tab and check the date and time of landing at the end port.
end time of effort <Effort End Time> occurs prior to start time of effort <Effort Start Time>	There is a conflict in dates and/or times between the start and the end of the haul. Note the effort number. Then go to the Effort tab and make sure that the Set—Start and Haul—End dates/times are correct.
Error -- Landing # <Landing Number> time of landing occurs before trip departure	There is a conflict in dates and/or times between the end of the trip and the landing. Go to the Landings tab and check the date and time of landing at the end port.
Error -- Landing # <Landing Number> time of landing occurs after end of trip	There is a conflict in dates and/or times between the end of the trip and the landing. Go to the Landings tab and check the date and time of landing at the end port.
Error -- Landing # <Landing Number> is missing required landing dynamic data element	Go to the Landings tab, select the landing, click the Additional Data button, and enter the required data.
Error -- Landing # <Landing Number> is missing required apportionment dynamic data element	You must enter additional data for this landing. Go to the Landings tab, select the landing, click the Additional Data button, and enter the required data.
Can not perform import function while a trip is active	Support tables cannot be loaded while there is an active trip. Close the current trip and try again.
Entry must be numeric	You can only enter numbers in this field.
The converted amount falls outside of the recommended range	Please check your conversion to verify that you have reported the correct amount, grade code and unit of measure.
Selected species not listed in Conversions table.	Ensure that the proper support tables have been loaded. You may not be able to convert species until new support tables are loaded.
Mesh size not within accepted limits for: <Gear Type>	The values you entered are outside the range of sizes that FLDRS considers typical. Check the values that you entered and make sure you are reporting the information correctly for that field. If you are still certain it is correct, click the Ignore button.

<i>Message</i>	<i>Solution</i>
Gear size not within accepted limits for: <Gear Type>	The values you entered are outside the range of sizes that FLDRS considers typical. Check the values that you entered and make sure you are reporting the information correctly for that field. If you are still certain it is correct, click the Ignore button.
Gear quantity not within accepted limits for: <Gear Type>	The values you entered are outside the range of sizes that FLDRS considers typical. Check the values that you entered and make sure you are reporting the information correctly for that field. If you are still certain it is correct, click the Ignore button.
# of hauls not within accepted limits for: <Gear Type>	The values you entered are outside the range that FLDRS can record. Check the values that you entered.
Error starting GPS	FLDRS is unable to receive data from your GPS unit. Check that the GPS unit is turned on and that all connections are secure. Additionally, verify that the correct COM port is selected in Software Setup.
Error starting Depth Sounder	FLDRS is unable to receive data from your depth sounder. Check that the depth sounder is turned on and that all connections are secure. Additionally, verify that the correct COM port is selected in Software Setup.
No species matches search pattern.	Check that you have spelled the species name correctly. If the spelling is correct, the species may not be listed in the support table. Verify a current species support table has been loaded.
Password entry must be at least 8 characters in length.	The password for the signing ceremony must meet these requirements.
Password entry must be no longer than 12 characters in length.	The password for the signing ceremony must meet these requirements.
At least one character must be a capital letter.	The password for the signing ceremony must meet these requirements.
At least one character must be a lowercase letter.	The password for the signing ceremony must meet these requirements.
At least one character must be numeric.	The password for the signing ceremony must meet these requirements.
At least one character must be non-alphanumeric.	The password for the signing ceremony must meet these requirements.
Single and double quotes may not be used.	The password for the signing ceremony must meet these requirements.
The operator password was not confirmed. Please enter again.	The password must meet certain requirements; see "Digital signing ceremony" page 16 Error! Bookmark not defined. Check your entry carefully and try again.
No data associated with selected trip identifier	There is no trip data for the identifier you selected, so FLDRS cannot export or retransmit trip. The trip may have been deleted.

<i>Message</i>	<i>Solution</i>
File already exists	A file already exists with this filename. FLDRS does not allow more than one file with the same name. You may need to delete the previous version of the file.
File not copied	The attempt to retransmit the file failed because the file could not be copied to the transmission directory. The trip may have been deleted.
No file matching selected trip identifier found	FLDRS cannot find a trip file to retransmit. The trip may have been deleted.
Re-Transmit button operational only for Skymate or Boatracs transmission methods	The transmission method must be set to Boatracs or Skymate in order to retransmit trip data. Verify transmission method in Admin Software Setup page.
Signing ceremony failed	You have used up all the signing attempts. To complete the transmission, you have to reinitiate the signing ceremony.
Error starting GPS	FLDRS is unable to receive data from your GPS unit. Check that the GPS unit is turned on and that all connections are secure. Additionally, verify that correct COM port is selected.
Error starting Depth Sounder	FLDRS is unable to receive data from your depth sounder. Check that the depth sounder is turned on and that all connections are secure. Additionally, verify that correct COM port is selected.
Invalid Support Table	Only .csv files with proper filenames can be loaded.
Non-Compatible file import	Only .csv files with proper filenames can be loaded.
Please enter a valid decimal value	Input can only be a valid decimal value.
Please enter a valid integer value	Input can only be a valid integer value.
Can not delete last user	At least one user record must remain in the database.
Cannot delete last administrator	At least one administrator record must remain in the database.
Username must be entered	The username cannot be blank.
Cannot add duplicate user	The user record already exists.
Password entry must be at least 8 characters in length.	The password must meet these requirements.
At least one character must be non-alphanumeric.	The password must meet these requirements.
Must confirm password	The password must be entered correctly twice for FLDRS to save the record to the database.
Cannot change type of user on last administrator	At least one administrator record must remain in the database.
Operator <OperatorName> already exists in the shortlist.	The operator name is already in the shortlist, and FLDRS does not allow duplicates in the list.

<i>Message</i>	<i>Solution</i>
Operator is utilized as a default. If this operator is deleted, a new default operator must be selected before trips can be entered. Continue with delete?	You are trying to delete the operator that you set as the default. Although you can go ahead and delete this operator, you must select an operator to use as the default operator.
Vessel <VesselName> already exists in the shortlist.	Cannot add duplicate vessel to the short list.
There are no vessels in the short list to delete.	The vessel short list is empty.
No species list to delete	There are no species lists.
No species list exists to copy	There is no species list.
Cannot add species before at least 1 species list is created	Before you can add species, you have to create a species list.
Cannot delete species before at least 1 species list is created	There is no species list.
At least 1 species list must be set up prior to gear configuration.	You must create a species list before you set up a gear configuration.
Haul Count cannot be null	You must enter a value for the haul count.
Please enter a valid decimal value	Enter a valid number. FLDRS could not interpret your entry.
Please enter a valid integer value	Enter a valid number. FLDRS could not interpret your entry.
Dealer <NameOfDealer> already exists in the shortlist.	The dealer name is already in the shortlist, and FLDRS does not allow duplicates in the list.
There are no dealers in the short list to delete.	The dealer shortlist is empty.
There are no gear configurations to delete.	The gear configuration shortlist is empty.
Current effort has not ended	Cannot start a new effort until current effort is completed or deleted.
Cannot start a new effort while a landing for the trip exists.	Once you have recorded a landing, the trip is closed and you cannot add more efforts to it.
Location missing. Cannot calculate area	Input a valid GPS location.
GPS not enabled	FLDRS is unable to receive data from your GPS unit. Check that the GPS unit is turned on and that all connections are secure. It may be necessary to physically unplug the USB cable and plug it back in to reset the port. Meanwhile, you may be able to enter values by hand.
Error in reading GPS date/time	The GPS is no longer sending data to FLDRS. Check that all connections are secure. Ensure that the correct COM port is selected in Software Setup.
GPS signal lost. Manual entry of location required.	The GPS is no longer sending data to FLDRS. Check that all connections are secure. You will have to enter fishing effort locations by hand.

<i>Message</i>	<i>Solution</i>
Location value exists. Do you wish to overwrite it?	If the location value is correct, do not overwrite it.
Start of set occurs after end of set	There is a conflict in dates and/or times between the start of the set and the end of the set. Note the effort number, then go to the Effort tab and check the Set—Start time and date and Set - End Time.
End of set occurs after start of haul	There is a conflict in dates and/or times between the start of the haul and the end of the set. Note the effort number, then go to the Effort tab and check the Haul—Start time and date and Set - End Time.
Start of haul occurs after end of haul	There is a conflict in dates and/or times between the start of the haul and the end of the haul. Note the effort number, then go to the Effort tab and check the Haul—Start time and date and Haul - End Time.
Current tow duration exceeds 8 hours.	The values you entered are outside the range of sizes that FLDRS considers typical. Check the values that you entered and make sure you are reporting the information correctly for that field. If you are still certain it is correct, click the Ignore button.
Please enter value between 0 and 59	Minute values must be between 0 and 59.
Please enter a valid decimal value	Enter only numbers within the expected range. The field must contain numbers and one decimal point.
Please enter a valid integer value	Enter only numbers within the expected range.
Soak Minutes cannot be empty	Enter a valid value for Soak Minutes.
Soak Minutes must be between 0 and 59	Minute values must be between 0 and 59.
Soak Minutes must be an integer	Enter only numbers within the expected range.
Soak Hours cannot be empty	Enter a valid value for Soak Hours.
Soak Hours must be an integer	Enter only numbers within the expected range.
Average Depth cannot be empty	Enter a valid value for Average Depth.
Average Depth must be an integer	Enter a valid integer value
Cannot edit catch once a landing record is created	Changes to the catch data cannot be made once a landing is generated.
Effort has been transmitted	Selected effort has already been transmitted. Changes to catch data cannot be made.
Current effort has not ended. Cannot edit catch data	Cannot enter catch data for an effort until effort has ended.
No landing has been generated.	No landing has been generated.
GNU encryption software not located. Trip can be archived but not exported until software is properly installed.	The encryption process failed but the trip information has been saved. Confirm that the encryption software is installed correctly and the application path is set in Software Setup. Trip can then be re-transmitted through the Managed Trips function.

<i>Message</i>	<i>Solution</i>
7-Zip software not located. File compression not possible until software is properly installed.	Confirm 7-Zip is properly installed and application path is set correctly.
There are no new efforts to export	You may not transmit trip data unless you have new efforts to report.
Signing ceremony failed	Signing attempts maxed out. Will need to reinitiate signing ceremony to complete transmission.
Database not successfully backed up	Database could not be backed up. Either the database could not be found or the System Backup folder not present.
Trip was not exported	An error occurred in the trip export process. Verify that transmission method is set correctly and reattempt export process.
There are no trips to delete	Trip data does not exist for selected identifier.
No Trips for Report Generation.	Trip data does not exist for selected identifier.
No active trip backup file yet exists for this trip	An attempt was made to recover a trip before the active trip backup file was created. If this is the case, recover trip not possible.