

Project and Expenditure Report User Guide

State and Local Fiscal Recovery Funds



January 9, 2022



Table of Contents

Section I. Reporting Basics..... 1

Section II. Navigation and Logistics..... 3

Section III. Reporting Requirements..... 9

Section IV. Project and Expenditure Report..... 12

Appendix A – Designating SLFRF Points of Contact by SLFRF Account Administrators.40

Appendix B – Bulk File Upload Overview.....47

Appendix C – Expenditure Categories and Template Mapping.....61

Appendix D – SLFRF Expenditure Category Programmatic Data and Other Information..64

Appendix E – List of Sectors..... 74

Appendix F – Frequently Asked Questions..... 75

List of Figures

Figure 1- Landing Page..... 3

Figure 2- Navigation Bar..... 3

Figure 3- Sample Bulk Upload Icon..... 4

Figure 4- Successful Bulk Upload Example..... 5

Figure 5- Unsuccessful Bulk Upload..... 5

Figure 6- Invalid Bulk Upload Error..... 6

Figure 7- Duplicative Value Upload Error..... 7

Figure 8- Manual Entry Text Box..... 7

Figure 9 Sidebar indicating Unsubmit Button..... 8

Figure 10 Relationship between Expenditure Categories and Multiple Projects..... 12

Figure 11 Recipient Information..... 13

Figure 12 Point of Contact List..... 13

Figure 13 SAM.gov question..... 14

Figure 14 Additional SAM.gov questions (1)..... 14

Figure 15 Additional SAM.gov questions (2)..... 15

Figure 16 Record of Highest Paid Officer..... 15

Figure 17 My Projects Screen Example..... 17

Figure 18 Project Expenditure Category Group..... 18

Figure 19 Project Expenditure Category..... 18

Figure 20 Bulk Upload for EC 1.1..... 18

Figure 21 Project Entry Screen..... 19

Figure 22 Manual Entry for EC 1.9..... 20

Figure 23 Programmatic Data for EC 1.9..... 20

Figure 24 Edit Project Screen..... 21

Figure 25 Premium Pay Screen..... 22

Figure 26 Programmatic Data for Infrastructure Projects..... 24

Figure 27 Davis Bacon Certification..... 25



Figure 28 Additional Questions if Response to Davis Bacon Certification is "No"25

Figure 29 Certification for Labor Agreements.....26

Figure 30 Additional Questions if response is "No"26

Figure 31 Revenue Replacement Screen.....28

Figure 32 Subrecipient Bulk Upload Icon.....29

Figure 33 Manually Create a Subrecipient.....30

Figure 34 Sam.gov Questions for Subrecipients.....30

Figure 35 Additional SAM.gov questions for Subrecipients.....31

Figure 36 Five Highest Paid Officers for Subrecipients.....31

Figure 37 Subrecipients Entered.....32

Figure 38 Subaward Bulk Upload (1).....32

Figure 39 Subaward Reporting.....34

Figure 40 Subaward Entered.....34

Figure 41 Expenditures >\$50,000.....35

Figure 42 Aggregated Expenditures <\$50,000.....36

Figure 43 Payments to Individuals.....37

Figure 44 Tax Offset Provision Screen.....37

Figure 45 Official Certification.....38

Figure 46 Summary of Reported Information.....39

Figure 47 Submission Verification.....39



Section I. Reporting Basics

a) Overview

This document provides information on using Treasury's Portal to submit the required Coronavirus State and Local Fiscal Recovery Funds (SLFRF) Project and Expenditure (P&E) reports. It is a supplement to the Compliance and Reporting Guidance ([Reporting Guidance](#)), which contains relevant information and guidance on the reporting requirements.

Additionally, you should visit Treasury's [SLFRF home page](#) for the latest guidance and updates on programmatic and reporting topics, as well as information on Treasury's [Interim Final Rule](#) (IFR).

Each SLFRF recipient is required to submit periodic reports with current performance and financial information including background information about the SLFRF projects that are the subjects of the reports; and financial information with details about obligations, expenditures, direct payments, and subawards.

b) What is Covered in this User Guide?

This User Guide contains detailed guidance and instructions for SLFRF recipients in using Treasury's Portal for submitting the Project and Expenditure reports. All recipients must submit the required reports via Treasury's Portal. This guide is not comprehensive and is meant to be used in conjunction with the documents mentioned above.

This User Guide provides detailed instructions to help recipients enter and submit the following:

- Project data
- Subrecipient data
- Subaward data
- Expenditure data
- Project and Expenditure Bulk Upload Templates

c) Designating Staff for Key Roles in Managing SLFRF Reports User Designations

SLFRF recipients are required to designate staff or officials for the following three roles in managing reports for their SLFRF award. Recipients must make the required designations prior to accessing Treasury's Portal. The required roles are as follows:

- **Account Administrator** for the SLFRF award has the administrative role of maintaining the names and contact information of the designated individuals for SLFRF reporting. The Account Administrator is also responsible for working within your organization to determine its designees for the roles of Point of Contact for Reporting and Authorized Representative for Reporting and providing their names and contact information via Treasury's Portal. Finally, the Account Administrator is responsible for making any changes or updates to the user roles as needed over the award period. We recommend that the Account Administrator identify an individual to serve in his/her place in the event of staff changes.
- **Point of Contact for Reporting** is the primary contact for receiving official Treasury notifications about reporting on the SLFRF award, including alerts about upcoming reporting, requirements, and deadlines. The Point of Contact for Reporting is responsible for completing the SLFRF reports.



- **Authorized Representative for Reporting** or ARR is responsible for certifying and submitting official reports on behalf of the SLFRF recipient. Treasury will accept reports or other official communications only when submitted by the Authorized Representative for Reporting. The Authorized Representative for Reporting is also responsible for communications with Treasury on such matters as extension requests and amendments of previously submitted reports. The official reports may include special reports, quarterly or annual reports, interim reports, and final reports.

Some key items to note:

- Each designated individual must register with ID.me or Login.gov for gaining access to Treasury's Portal.
- Users who have previously registered through ID.me may continue to access Treasury's Portal through that method. This [link](#) includes further instructions.
- If you have not previously registered with ID.me, you should register through Login.gov following this [link](#). The following links provide additional information:
 - o <https://login.gov/create-an-account/>
 - o <https://login.gov/help/get-started/create-your-account/>
- An individual may be designated for multiple roles. For example, the individual designated as the Point of Contact for Reporting may also be designated as the Authorized Representative for Reporting.
- The recipient may designate one individual for all three roles.
- Multiple individuals can be designated for each role.
- An organization may make changes and updates to the list of designation individuals whenever needed. These changes must be processed by the Account Administrator.

Refer to [Appendix A](#) for guidance on designating individuals for the three roles.

The designated individuals' names and contact information will be pre-populated in the "Recipient Profile" portion of the recipient's SLFRF reports, and recipients will be able to update the information, if necessary.

Please contact SLFRP@treasury.gov for additional information on procedures for registering with ID.me or Login.gov.

d) Questions?

If you have any questions about the SLFRF program's reporting requirements, please contact us by email via SLFRP@treasury.gov.



Section II. Navigation and Logistics

a) Login to Landing Page and Portal Navigation

After logging into Treasury’s Portal, the landing page (see Figure 1) will appear listing the Treasury’s Office of Recovery Programs (ORP)-administered program for which your organization may be eligible.

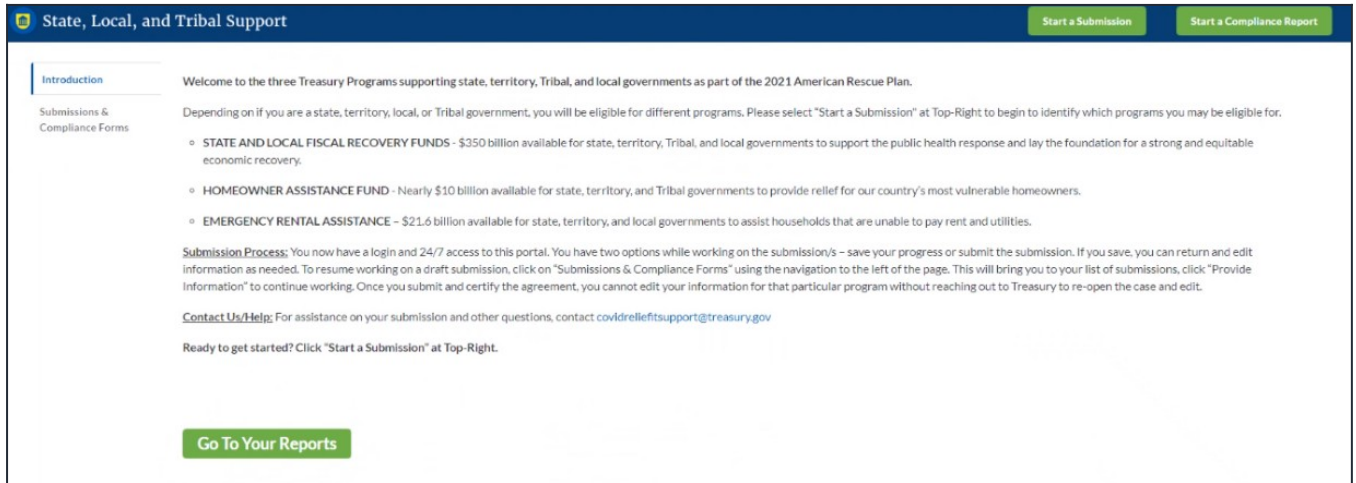


Figure 1- Landing Page

From the landing page, select *Go to Your Reports* or *Submissions & Compliance Forms* on the left side panel to be taken to a list of options for the programs you have access to under the Report Selection section.

At this time, you may select the Project and Expenditures report.

Each listed report constitutes a link to that specific report’s online forms. Selecting a report from the landing page will open the first in a series of screens.

To begin completing a specific report, click on *Provide Information* for the given report. Refer to the [Reporting Guidance](#) for details about each type of required report for submittal.

The Navigation Bar (see Figure 2) on the left of Treasury’s Portal will allow you to freely move between screens.



Figure 2- Navigation Bar



b) Helpful Tips/Shortcuts for Submitting Data to Treasury’s Portal

Treasury’s Portal leads you through a series of online forms that, when completed, will fulfill your reporting obligations. While navigating through Treasury’s Portal and submitting required information, users will have the option of manually entering data directly into Treasury’s Portal or providing information via a bulk upload file that includes all relevant information in a Treasury approved process and format.

1. Bulk File Upload Files

Recipients can use the bulk upload function for providing required information for the modules listed here:

- Project Overview
- Subrecipients
- Subawards
- Expenditures

When using the bulk upload, recipients must provide the required information in specified formats and use the Treasury approved templates for each respective bulk upload. Recipients must download each of the templates separately from within the relevant Treasury’s Portal module.

Please see [Appendix B](#) – Bulk File Upload Overview for complete guidance on using this important function.

Modules accepting bulk upload files are clearly marked in Treasury’s Portal and identified in later sections of this User Guide. The template for each upload file is available in the relevant module for download (see Figure 3).

General Project Information

*Project Expenditure Category

1-Public Health

*Project Expenditure Subcategory

1.1-COVID-19 Vaccination

[Download the Project Baseline Template](#)

[Upload Project Baseline Template](#)

Figure 3- Sample Bulk Upload Icon

All bulk file templates download in the .xls format, but these files must be converted to .csv format to properly upload. When you click the upload button you will be directed to an upload screen. You can either choose to add files or drag and drop files to initiate the bulk upload (see Figure 4).



Add Projects - Bulk Upload

Upload File

[Upload Files](#) Or drop files

Close

Figure 4- Successful Bulk Upload Example

Treasury’s Portal will reject the file if an incorrect template, data format, or file format other than .csv is used for upload (see Figure 5). Treasury’s Portal will display an error message on screen if the bulk data upload file contains errors. If you receive an error message, you will need to correct the errors in the bulk upload file and re-submit the corrected version.

Recipients should review the upload file carefully, as current system functionality will only show the first error found in a bulk file. Multiple field errors will necessitate multiple fix and upload attempts.

When a bulk upload error occurs, the system stops scanning the file and immediately reports the first error found in the document. Once you correct the error, you should ensure you have not made the same error in each consecutive row below where the first error was identified prior to re-submitting the corrected bulk upload file.

There are three common Bulk File Upload errors as described below:

- **Blank Data** (see Figure 5): When a required field is left blank within your bulk upload file, the specific bulk upload file row and cell number will be provided on the screen. In the example below, the user made an error pertaining to the “Completion Status” and the error is located in Column F, Row 8.

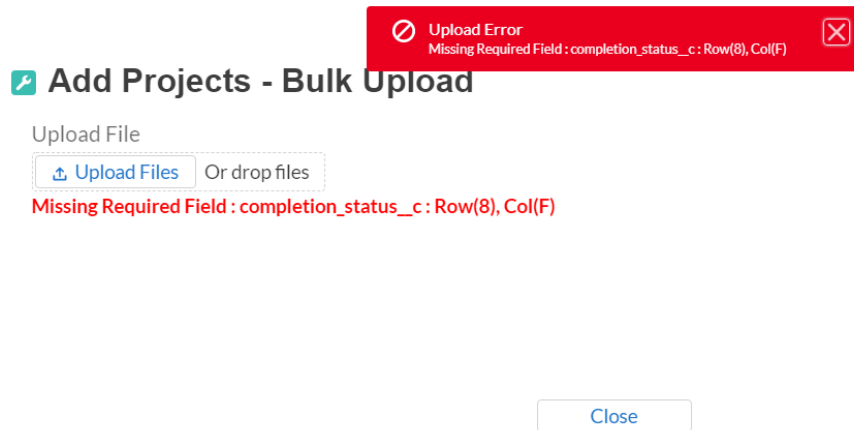


Figure 5- Unsuccessful Bulk Upload

- **Invalid Data** (see Figure 6): Invalid data includes any type of data (numeric or text) that does not meet the requirements set forth in the Help Text within each bulk



upload template. When invalid data is found in a cell, the error message uses Row Zero logic. When the system scans for and finds invalid data, the error message treats the first row containing your entered data (typically Row 8) as Row “0”.

- o For example, if your bulk upload file contains an error in Row 8, and the first line of your data entry is in Row 8, then the error message will report the mistake in Row 0 (8 minus the starting point of 8) as shown in Figure 6.
- o The error message will also show the required field that was incorrect, such as “Project and Expenditure Category” shown in Figure 6.

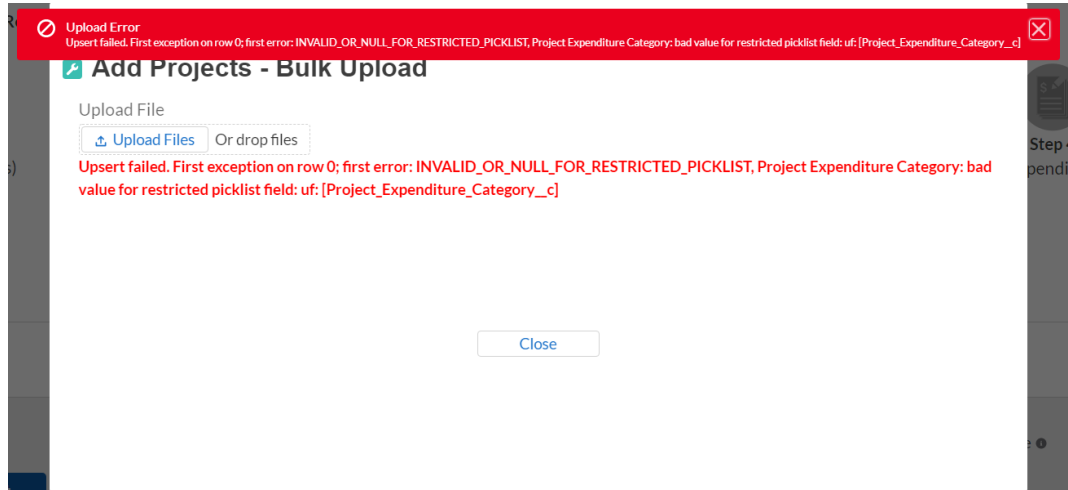


Figure 6- Invalid Bulk Upload Error

- **Duplicate Data** (see Figure 7): Duplicate data includes any type of data (numeric or text) that is repeated in the same column when the Help Text within a bulk upload template requires a unique entry. For example, unique numbers should be provided for the project identification number. When duplicate data is found in a cell, the error message uses Row Zero logic. When the system scans for and finds invalid data, the error message treats the first row containing your entered data (typically Row 8) as Row “0.”
 - o For example, if your Bulk Upload file contains an error in Row 8, and the first line of your data entry is in Row 8, then the error message will report the mistake in Row 0 (8 minus the starting point of 8) as shown in Figure 7.
 - o The error message will also show the required field that was incorrect, such as “Project Identification Number” shown in Figure 7.

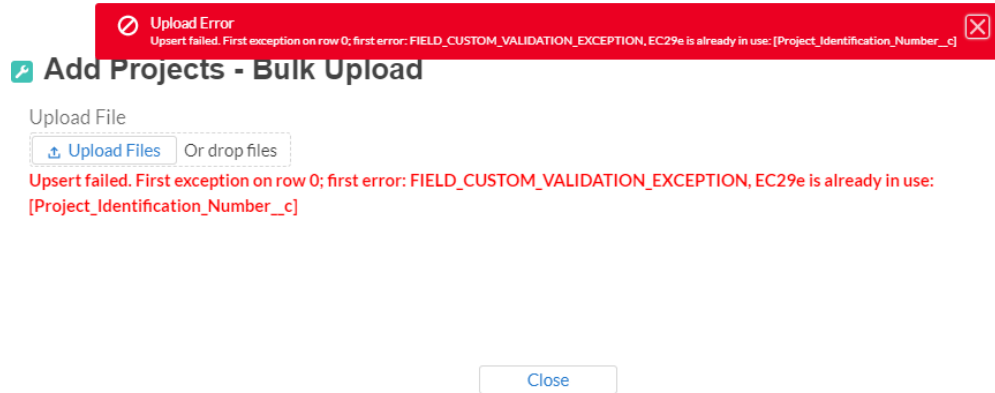


Figure 7- Duplicative Value Upload Error

2. Manual Data Entry

Manual data entry requires you to provide inputs as instructed on the screen. Manual inputs are described in detail below for each section of this user guide.

Note: An asterisk (*) indicates a required field. Entry into the field is required before you can save or proceed to the next screen.

Your inputs will be subject to validation by Treasury’s Portal to ensure that the data provided is consistent with expected format or description (e.g., entering “one hundred” instead of 100). If a given data entry fails a validation rule, Treasury’s Portal will display an error for you to address.

You will not be able to submit manually entered data that does not satisfy the data validation rules.

3. Narrative Boxes

When filling out detailed narratives, you are encouraged to type out responses in a word processing application (such as Microsoft Word) to minimize grammatical errors, track word count, and concisely answer all required narrative details. You can then copy and paste the final written narratives directly into the text boxes.

The text boxes (see Figure 8) can be expanded by clicking and dragging the icon in the bottom-right corner.

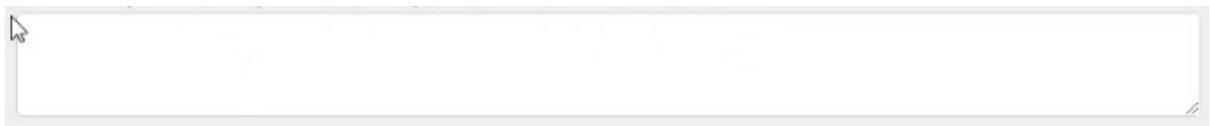


Figure 8- Manual Entry Text Box

4. Corrections and Resubmissions

In the event a file is uploaded, or information is entered into Treasury’s Portal, the information will be accepted by Treasury’s Portal as a record. Changes to information that has been bulk uploaded are currently not permitted.



After a recipient's submission has been certified and submitted in the system by the ARR, it can be corrected in the Portal by selecting the *Unsubmit* button. Recipients may unsubmit, then resubmit their Project and expenditure Report any time before the reporting deadline (see Figure 9).

Submitted

Report Information

Report Name
SLT-0035 - Interim Report - 2021

Report Type
Project and Expenditure Report

Report Period
Quarter 1 2022 (January-March)

Reporting Period Start Date
1/1/2022

Reporting Period End Date
3/31/2022

Submission Deadline
12/5/2023 12:00 PM

Allocated Amount
\$1,250,000.00

Unsubmit

Figure 9 Sidebar indicating Unsubmit Button



Section III. Reporting Requirements

a) Reporting Requirements by Recipient

For the SLFRF program, reporting requirements vary by recipient type, as shown in the table below. Detailed instructions for completion and submission of each report are covered in Part 2 of the [Reporting Guidance](#).

Tier	Recipient	Interim Report	Project and Expenditure Report	Recovery Plan Performance Report
1	States, U.S. territories, metropolitan cities and counties with a population that exceeds 250,000 residents	By August 31, 2021 or 60 days after receiving funding if funding was received by October 15, with expenditures by category	By January 31, 2022, and then 30 days after the end of each quarter thereafter ¹	By August 31, 2021 or 60 days after receiving funding, and annually thereafter by July 31 ²
2	Metropolitan cities and counties with a population below 250,000 residents which received more than \$10 million in SLFRF funding			Not required
3	Tribal Governments which received more than \$30 million in SLFRF funding		By April 30, 2022, and then annually thereafter ³	
4	Tribal Governments which received less than \$30 million in SLFRF funding			
5	Metropolitan cities and counties with a population below 250,000 residents which received less than \$10 million in SLFRF funding			
6	NEUs	Not required		

b) Project and Expenditure Report Requirements

1. Quarterly Reporting

¹ Interim Final Rule Page 111

² Interim Final Rule page 112

³ Interim Final Rule Page 111



The following recipients are required to submit quarterly Project and Expenditure Reports:

- States, and U.S. territories
- Metropolitan cities and counties with population that exceeds 250,000 residents
- Metropolitan cities and counties with a population below 250,000 residents which received more than \$10 million in SLFRF funding
- Tribal Governments that received more than \$30 million in SLFRF funding

For these recipients, the initial quarterly Project and Expenditure Report will cover the period from March 3, 2021 to December 31, 2021 and must be submitted to Treasury by January 31, 2022. The subsequent quarterly reports will cover one calendar quarter and must be submitted to Treasury within 30 calendar days after the end of each calendar quarter

States and territories should continue to submit the monthly NEU/Non-UGLG distribution information through the separate module in Treasury's Portal.

2. Annual Reporting

The following recipients are required to submit annual Project and Expenditure Reports:

- Tribal Governments that received less than \$30 million in SLFRF funding
- Metropolitan cities and counties with a population below 250,000 residents which received less than \$10 million in SLFRF funding
- Non-Entitlement Units of Local Government (NEU). To facilitate reporting, each NEU will need a NEU Recipient Number. This is a unique identification code for each NEU assigned by the State or U.S. Territory to the NEU as part of its request for funding.

For these recipients, the initial Project and Expenditure Report will cover from March 3, 2021 to March 31, 2022 and must be submitted to Treasury by April 30, 2022. The subsequent annual reports will cover one calendar year and must be submitted to Treasury by April 30 each year.

c) Key Concepts for Reporting

The following concept structure applies to all report types:

1. Expenditure Categories

- Each recipient is required to report the **obligations** and **expenditures** by project according to the corresponding Expenditure Category (EC). As noted in the Reporting Guidance, there are a wide range of eligible uses of the SLFRF funds, and Treasury must be able to track how funds are used by recipients for oversight and transparency purposes. In addition, States, U.S. territories and metropolitan cities and counties with a population over 250,000 also need to provide the **adopted budget** for each project.
 - o An obligation is an order placed – such as a contract – and similar transactions that require payment.



- o An expenditure is when the service has been rendered or the good has been delivered to the entity, and payment is due.
- o The adopted budget is the budget adopted for each project by a recipient associated with SLFRF funds. Recipients will enter the Adopted Budget based on information that exists currently in the recipient's financial systems and the recipient's established budget process. Treasury understands that recipients may use different budget processes. For example, a recipient may consider a project budgeted once a legislature has appropriated funds; whereas another recipient may consider a project budgeted at the moment when the funds have been obligated. Note that Treasury is not approving or pre-approving projects or budgets. Treasury will use this information to better understand the intended impact, identify opportunities for technical assistance, and understand the recipient's progress in program implementation. Treasury is also collecting additional descriptive information about the budget process in order to better understand the context of recipients' budget processes.
- For each project, the recipient will be asked to select the appropriate Expenditure Category based on the scope of the project (as described in Appendix 1 of the Reporting Guidance). Projects should be scoped to align to a single Expenditure Category.
- The Expenditure Categories are important not only for tracking projects and expenditures, but also because for certain Expenditure Categories you will need to provide additional programmatic data. You will see them referred to regularly throughout the Reporting Guidance and in this User Guide with "EC" followed by a number.
- [Appendix C](#) includes the full list of the 66 Expenditure Categories⁴, which refers to the detailed level. For instance, 1.1 is the EC related to Public Health: 1.1 COVID-19 Vaccination.
- While 66 Expenditure Categories are identified, they are a very broad categorization – each Expenditure Category could include many different programs and activities.

2. Project

- A project is defined as a grouping of closely related activities that together are intended to achieve a specific goal or directed toward a common purpose.
- These activities can include new or existing services, funded in whole or in part by the SLFRF award.
- Within this broad definition, recipients have flexibility to define their projects in a way that provides the greatest clarity on the work which will be performed.
- Each project must align to **one** Expenditure Category. Projects break down an Expenditure Category into more detail.

⁴ Included in Appendix 1 of the Reporting Guidance



- You are required to define projects at a sufficient level of granularity to be able to do any programmatic reporting that is required.
- For each Expenditure Category you use funding for, you will have one or more projects.
- For each project, you will need to track obligations and expenditures, as well as any subawards made.

Figure 10 depicts the relationship between EC and multiple projects.

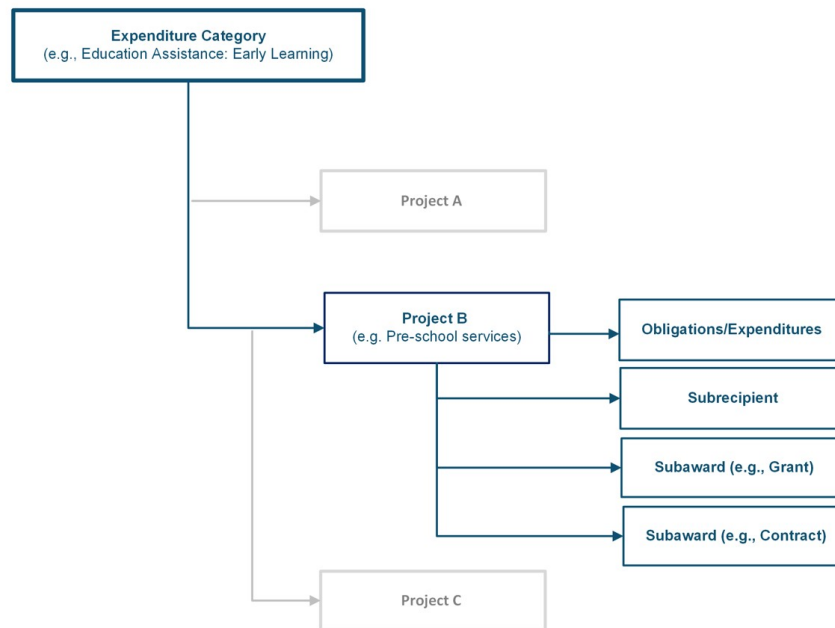


Figure 10 Relationship between Expenditure Categories and Multiple Projects

Section IV. Project and Expenditure Report

The Project and Expenditure Report provides information on projects funded, expenditures, and contracts and subawards over \$50,000, and other information required from recipients. Multiple modules or “screens” will help navigate recipients through the Project and Expenditure Report in Treasury’s Portal as follows:

- a) Recipient Profile
- b) Project Overview
- c) Subrecipients
- d) Subawards
- e) Expenditures
- f) Recipient Specific
- g) Certification

The following sections describe the reporting steps and information to be collected in each module.

a) Recipient Profile



Upon login, you will be directed to the recipient information page, which is intended to verify relevant information in Treasury’s Portal. On this screen, you will review and confirm key information on your organization, and input information required for the Project and Expenditure Report. Recipient Profile information will be pre-populated from your SLFRF Application file (see Figure 10). If you have previously entered a DUNS (+4) number, it will appear here.

1. Review and confirm your Recipient Profile prepopulated from your SLFRF Application file (see Figure 11).
2. If you have a Recipient DUNS (+4) number and the field is not populated, update as necessary.
3. Verify the names and contact information for individuals the recipient has designated for key reporting roles for the SLFRF program displayed on the screen (see Figure 12).

Recipient Information

DUNS	123456789	Address	123 Testing Lane
DUNS (+4)	<input type="text" value="2121"/>	Address 2	N/A
TIN	123456789	Address 3	N/A
Legal Entity Name	SLFRF Test 1	City	Arlington
Type	State or Territory	State/Territory	ID
FAIN	4321	Zip5	22204
CFDA No.	1234	Zip+4	0000
		Reporting Tier	Tier 1. States, U.S. territories, metropolitan cities and counties with a population that exceeds 250,000 residents

Please report discrepancies (if any) on the Recipient Information

Figure 11 Recipient Information

Point of Contact List

	Name	Title	Phone	Email	Roles
1	John	UAT Testing	111-222-3333	gov	SLFRF - Account Administrator;SLFRF - Authorize...
2	John	UAT Testing	111-222-3333	gov	SLFRF - Account Administrator;SLFRF - Authorize...

Figure 12 Point of Contact List

4. If changes are needed to the information displayed on the screen, use the textbox (see Figure 11). Please refer to the instructions in Appendix A if the updates are associated with reporting roles, or contact SLFRP@treasury.gov.
5. For States, U.S. territories, and metropolitan cities and counties over a population over 250,000, provide the answers to the following two questions:
 - Who approves the budget in your jurisdiction? Select from the pick-list as follows: Legislature; Executive; Legislature & Executive; Other.
 - o If other, specify who approves the budget. Please include information about the role or function, not an individual’s name.



- Is your budget considered executed at the point of obligation? Select “Y” or “N”. Please note that if you select Y and your budget is considered executed at the point of obligation, then your adopted budget and total dollar value of obligations for each project would be the same.

Treasury is requiring descriptive information about budget processes to support analysis of adopted budget information. Treasury is collecting adopted budget information to better understand the intended impact of recipient projects and help tell the story of how these funds are used, identify opportunities for technical assistance, and understand the recipient’s progress in program implementation. Treasury is requesting this descriptive information to inform these efforts.

Treasury is not approving or pre-approving projects or budgets. Treasury also recognizes that recipients may adjust project budgets over time, and recipients will have the ability to reflect these changes in future reporting.

6. Complete the SAM.gov Registration and Executive Compensation information.
 - a. Use the dropdown (see Figure 13) to confirm your entity’s SAM.gov status and Executive Compensation reporting eligibility questions.

* Is the Recipient Registered in SAM.Gov?
--None--
Save

Figure 13 SAM.gov question

- b. If you are registered in SAM.gov, select “Yes” from the picklist and move on to Step 7 below.
- c. If you are not registered in SAM.gov, select “No” from the picklist. Two additional questions will populate the space below (see Figure 14).

* Is the Recipient Registered in SAM.Gov?
No

* In the preceding fiscal year, did recipient receive 80% or more of its annual gross revenue from federal funds?
--None--

* In the preceding fiscal year, did recipient receive \$25 million or more of its annual gross revenue from federal funds?
--None--

Figure 14 Additional SAM.gov questions (1)



- d. If the recipient received 80% or more of its annual gross revenue from federal funds AND the recipient received \$25 million or more of its annual gross revenue from federal funds, an additional question will appear (see Figure 15). If the answer is “No” to any of these two questions, move on to step 7 below.

* Is the Recipient Registered in SAM.Gov?

* In the preceding fiscal year, did recipient receive 80% or more of its annual gross revenue from federal funds?

* In the preceding fiscal year, did recipient receive \$25 million or more of its annual gross revenue from federal funds?

* Is the "total compensation" for the organization's five highest paid officers publicly listed or otherwise listed in SAM.gov?

Figure 15 Additional SAM.gov questions (2)

- e. Select “Yes” if the total compensation for the organization’s five highest paid officers is publicly listed or otherwise listed in SAM.gov and move on to Step 7 below.
- f. Select “No” if the total compensation for the organization’s five highest paid officers is not publicly listed or otherwise listed in SAM.gov. Enter the name(s) of the officer(s) in the chart that will appear (see Figure 16) and the total compensation received by each. If fewer than five (5) officers exist, enter “N/A” and \$0 in the empty field(s).

* If no, please enter the information below. If number of officers is less than 5, please enter N/A for Name and 0 for Total Compensation. ⓘ

No.	Name	Total Compensation
1	<input type="text"/>	<input type="text"/>
2	<input type="text"/>	<input type="text"/>
3	<input type="text"/>	<input type="text"/>
4	<input type="text"/>	<input type="text"/>
5	<input type="text"/>	<input type="text"/>

Figure 16 Record of Highest Paid Officer

- 7. Once all fields have been reviewed and verified, click the Save button to save your progress, then click the Next button to proceed to the following screen.

b) Project Overview

Recipients are required to enter all projects funded through SLFRF funds as part of their Project and Expenditure Report. Once projects are entered, they are viewable on the Project Overview screen and can be updated in future reporting periods.

There are a couple of things to keep in mind when planning and executing your project inventory entry:



- **Manual versus Bulk Upload Entry:** There are two ways to enter project information – manual data entry and bulk upload. Bulk upload templates are specific to the project's expenditure category group. Recipients may upload information for multiple projects within the same expenditure category group template simultaneously. [Appendix B](#) provides step by step instructions for using the bulk upload option.

Due to the different data collected across expenditure categories, you should not use the same bulk upload template from one expenditure category group to another.

- **Non-Infrastructure and Infrastructure Projects Programmatic Data:** Treasury requests various programmatic data or impact measures for projects in several non-infrastructure (i.e., projects in EC 1 – 4) and infrastructure projects (i.e., projects in EC 5.1 – 5.17). The programmatic data can be provided via manual project entry or via bulk upload templates. [Appendix B](#) provides step by step instructions for using the bulk upload option for projects with programmatic data. [Appendix D](#) provides additional detail on the programmatic data requested by EC. Treasury recognizes that some programmatic data may not be available until a project starts.
- **Infrastructure Projects with expected total cost over \$10M:** Information for infrastructure projects with expected total cost over \$10 million must be entered manually at this time in Treasury's Portal. [Appendix D](#) provides additional detail on the programmatic data requested by EC.

When creating infrastructure projects via bulk upload, it is important to re-open those project records to manually complete fields related to costs over \$10M.

- **Transfers to NEUs (EC 7.4) (only applicable to States and U.S. territories):** States and U.S. territories should report any transfers to NEUs as part of the separate NEU/Non-UJLG module. A project cannot be added under EC 7.4.

Recipients should refer to [Appendix C](#) when planning your project inventory entry, as it includes a table identifying which ECs require the programmatic data. The table also maps each EC to its appropriate bulk upload template.

All projects, regardless of Expenditure Category, require a set of "standard" data fields. Some of these fields, such as project name and project ID, are static and do not change across reporting periods. Other fields, such as status of completion and total obligations, will change across reporting periods.

On the Project Overview Screen, recipients can view previously established projects and enter new projects (see Figure 17). The screen displays the total number of projects and total obligations for the recipient. The screen also displays the following for each project entered: project name, project ID, adopted budget (if applicable), total obligations, total expenditures, expenditure category, project status, subaward status, and expenditure status. To go directly to a project to edit or add information, click the colored green or red status button for that project.



For Project Status, the green check icon indicates all required fields have been answered. For Subaward Status and Expenditure Status, this indicates that at least one subaward or expenditure entry has been made.



For Project Status, the red pencil icon indicates that not all required fields have been answered. For Subaward Status and Expenditure Status, this indicates that no subaward or expenditure entry has been made.

To add a new project from this screen, click the *Add New Project* button. You may need to refresh your browser screen to see your previous new entries.

My Projects ✔ = Complete ❌ = Not Complete

Total Number of Projects : 9

Total Obligations: \$32,567,000.00 Total Expenditures: \$37,025,500.00

[Add New Project](#)

Search: Records per page: 10 Page: 1 of 1

Project Name	Recipient Project Id	Total Obligations	Total Expenditures	Expenditure Category	Project Status	Subaward Status	Expenditure Status
1 Infra 5.17 test project	IIS17	\$15,000,000.00	\$14,000,000.00	5-Infrastructure	✔	❌	❌
2 Infra 5.16 test project	IIS16	\$1,000,000.00	\$550,000.00	5-Infrastructure	✔	✔	✔
3 PP 4.1 test project	PP41	\$5,000.00	\$0.00	4-Premium Pay	✔	❌	❌
4 SDIC 3.5	SDIC35	\$8,500.00	\$7,500.00	3-Services to Disproportionately Impacted Communities	✔	❌	❌
5 NEI 2.3 test project	NEI23	\$6,000.00	\$6,000.00	2-Negative Economic Impacts	✔	❌	❌
6 Infra 5.3	IIS3	\$12,000,000.00	\$10,000,000.00	5-Infrastructure	✔	❌	❌
7 PH 1.2	PH12	\$5,000.00	\$3,000.00	1-Public Health	✔	❌	❌
8 Infra 5.11	IIS11	\$9,000,000.00	\$8,000,000.00	5-Infrastructure	✔	❌	❌
9 PH 1.1 test project	PH11	\$1,000.00	\$500.00	1-Public Health	✔	❌	❌

[Download as CSV](#)

Figure 17 My Projects Screen Example

c) Add project manually

1. Select the Project Expenditure Category Group and Project Expenditure Category from the picklists. Selection of Expenditure Category drives the template by which you will manually enter the project data (see Figures 18 through 21). To view all of the ECs, scrolling may be necessary.

Add Project

General Project Information

*Project Expenditure Category Group

--None--

- ✔ --None--
- 1-Public Health
- 2-Negative Economic Impacts
- 3-Services to Disproportionately Impacted Communities
- 4-Premium Pay
- 5-Infrastructure
- 6-Revenue Replacement
- 7-Administrative and Other

Figure 18 Project Expenditure Category Group



Add Project

General Project Information

*Project Expenditure Category Group

1-Public Health

*Project Expenditure Category

--None--

- ✓ --None--
- 1.1-COVID-19 Vaccination
- 1.2-COVID-19 Testing
- 1.3-COVID-19 Contact Tracing
- 1.4-Prevention in Congregate Settings (Nursing Homes, Prisons/Jails, Dense Work
- 1.5-Personal Protective Equipment
- 1.6-Medical Expenses (including Alternative Care Facilities)
- 1.7-Capital Investments or Physical Plant Changes to Public Facilities that res
- 1.8-Other COVID-19 Public Health Expenses (including Communications, Enforcemen
- 1.9-Payroll Costs for Public Health, Safety, and Other Public Sector Staff Resp
- 1.10-Mental Health Services

Figure 19 Project Expenditure Category

- Note that once you select values from the Project Expenditure Category Group and the Project Expenditure Category picklists, the bulk download and upload links will appear (see Figure 20). As you are entering the information manually, go to step 3.

*Project Expenditure Category Group

1-Public Health

*Project Expenditure Category

1.1-COVID-19 Vaccination

[Download the Project Baseline Template](#)

[Upload Project Baseline Template](#)

Figure 20 Bulk Upload for EC 1.1

- Enter the project name.
- Enter the unique project identification number you assigned to the project. Do not use duplicate project numbers for multiple projects.
- Select the completion status of the project from the drop-down list. Options are:
 - Not started
 - Completed less than 50%
 - Completed 50% or more
 - Completed
- For States, U.S territories and metropolitan cities and counties with population over 250,000, enter the adopted budget for the project.
- Enter the total dollar value of obligations for this project. If funds have not been obligated, enter "0".
- Enter the total dollar value of expenditures for this project. If expenditures have yet to be made, enter "0".



- Note – Recipients should ensure that Total Expenditures are less than or equal to Total Obligations for each project. Treasury’s Portal will otherwise return an error.
9. Provide a description for the project between 50 to 250 words. Treasury encourages recipients to include a description of the population they are serving, the desired impact, and how this impact will be measured.

For projects reported under the Project Expenditure Categories EC1: Public Health, EC2: Negative Economic Impact and EC3: Services to Disproportionately Impacted Communities, provide answers to the questions “Does this project include a capital expenditure”? If “Yes”, what is the total expected cost of the capital expenditure, including pre-development costs? If the answer is “No”, include a zero for the expected total cost of the capital expenditure.

10. If the project earns income or has expended that income, enter the total dollar value of program income earned and Program income expended in the fields of the same name, respectively.
11. If the project is in an EC which requires additional programmatic data, additional fields will display on the screen. Please see [Section IV.b.2](#) below for more information on providing programmatic data and [Appendix D](#) for more information on the programmatic indicators themselves.

Figure 21 Project Entry Screen

Once all of the above information is entered, click the *Add Project* button, then click the *Next* button to proceed to the following screen or you can stay on this screen and continue adding projects to your project inventory. Refer to Figure 21.

d) Programmatic Data for Projects

As noted above, projects in several ECs require programmatic data in addition to the standard project information covered above and as described in Part B.3.i and B.3.j of the Reporting Guidance. [Appendix D](#) provides additional detail on the measures and information required, by



Expenditure Category. This information should be provided at the project-level (e.g., disaggregated by project if the recipient has multiple projects in a single EC).

Programmatic data can be provided via the manual project entry process described above, or in some cases via bulk upload using the Expenditure Category-specific templates, described in [Section IV.b.4](#) and [Appendix B](#).

For example, to manually enter a new project in Expenditure Category 1.9 (see Figure 22) Payroll Cost for Public Health, Safety, and other Public Sector Staff Resp, the recipient should:

1. Follow steps 1 – 11 in [Section IV.b.1](#) above.
2. Populate the programmatic data field for “Number of government FTEs responding to COVID-19 supported under this authority” (see Figure 23).
3. Once all of the above information is entered, click *Add Project*.
4. Click the *Next* button to proceed to the following screen.

Add Project

General Project Information

*Project Expenditure Category Group
1-Public Health

*Project Expenditure Category
1.9-Payroll Costs for Public Health, Safety, and Other Public Sector Staff Resp

[Download the Project EC 1.9 Template](#)
[Upload Project EC 1.9 Template](#)

*Project Name *Total Obligations

*Recipient Project ID *Total Expenditures

*Status to Completion
--None--

Figure 22 Manual Entry for EC 1.9

*Project Description

Additional Questions

Number of government FTE responding to COVID-19 supported under this authority

Add Project

Figure 23 Programmatic Data for EC 1.9

If entering projects via bulk upload, recipients should populate the programmatic data columns contained in the appropriate EC’s bulk upload template.

Refer to [Appendix D](#) for a full listing of project Expenditure Categories with detail on the additional information needed for specific categories. [Appendix C](#) provides a helpful table mapping each Expenditure Category to the bulk upload template recipients should use if inputting or updating projects via the bulk upload method.



Projects entered into the system can be edited or deleted before final submission. To edit a project, open the project from the My Projects screen. To delete a project, use the *Delete Project* Button. If a report is already submitted, users will need to un-submit to edit or delete a project record. See Figure 24.

The screenshot shows the 'Edit Project' interface with the following fields and values:

- Project Expenditure Category Group:** 5-Infrastructure
- Project Expenditure Category:** 5.14-Drinking water: Storage
- Project Name:** 10 Mil Test
- Recipient Project ID:** 13370
- Adopted Budget:** (empty)
- Total Obligations:** \$10,000,000.00
- Total Expenditures:** \$10,000,000.00
- Status to Completion:** --None--
- Project Description:** 10 Million Test
- Program Income Earned:** (empty)
- Program Income Expended:** (empty)

Buttons at the bottom right: Delete Project (red), Save Project (blue).

Figure 24 Edit Project Screen

1. Premium Pay (EC 4.1 and EC 4.2)

If EC 4.1 or 4.2 is selected as the project expenditure category, recipients will need to provide additional data.

General Project Information

- Project Expenditure Area:** 4-Premium Pay
- Project Expenditure Category:** 4.1-Public Sector Employees
- [Download the Project EC 4.1 - 4.2 Template](#)
- [Upload Project EC 4.1 - 4.2 Template](#)
- Project Name:** (empty)
- Total Obligations:** (empty)
- Recipient Project ID:** (empty)
- Total Expenditures:** (empty)
- Status to Completion:** --None--
- Project Description:** (empty)



Additional Questions

Sectors designated as critical to Health and well being

Number of workers to be served

Premium Pay Narrative

Figure 25 Premium Pay Screen

In addition, recipients need to provide additional information in regard to Premium Pay, as reflected in Figure 25.

Note - Recipients that are either creating or supporting a Premium Pay program may only provide premium pay to eligible workers, e.g., workers needed to maintain continuity of operations of essential critical infrastructure sectors (see sector list below), for essential work, e.g., work that is not performed while teleworking from a residence; and involves either:

- regular, in-person interactions with patients, the public, or coworkers of the individual that is performing the work; or
 - regular physical handling of items that were handled by, or are to be handled by, patients, the public, or coworkers of the individual that is performing the work.
- **Sectors designated as essential critical infrastructure sectors:** Recipients should refer to the list of sectors below when providing information for this question. Recipients may also refer to this list of sectors on the Subaward screens (see section IV.g) to answer the question: *Employer sector for all subawards to third-party employers (i.e., employers other than the State, local, or Tribal government).*

Sectors Designated as Essential Critical Infrastructure Sectors
Any work performed by an employee of a State, local, or Tribal government
Behavioral health
Biomedical Research
Critical clinical research, development, and testing necessary for COVID-19 response
Dental care work
Educational work, school nutrition work, and other work required to operate a school facility
Elections work
Emergency response
Family or childcare
Grocery stores, restaurants, food production, and food delivery
Health care
Home- and community-based health care or assistance with activities of daily living
Laundry work
Maintenance work
Medical testing and diagnostics



Sectors Designated as Essential Critical Infrastructure Sectors
Mortuary work
Pharmacy
Public health work
Sanitation, disinfection, and cleaning work
Social services work
Solid waste or hazardous materials management, response, and cleanup work
Transportation and warehousing
Vital services to Tribes
Work at hotel and commercial lodging facilities that are used for COVID-19 mitigation and containment
Work requiring physical interaction with patients
Other

Beyond this list, the chief executive (or equivalent) of a recipient government may designate additional non-public sectors as critical so long as doing so is necessary to protecting the health and wellbeing of the residents of such jurisdictions.

Premium Pay Narrative: Premium pay must be responsive to eligible workers performing essential work during the public health emergency. For groups of workers that do not meet one of the two criteria below, Recipients must submit a written justification to Treasury describing how the premium pay or grant is responsive to workers performing essential work during the public health emergency:

1. Eligible worker receiving premium pay is earning (with the premium included) below 150 percent of their residing state or county's average annual wage for all occupations, as defined by the Bureau of Labor Statistics Occupational Employment and Wage Statistics,⁵ whichever is higher, on an annual basis; or
2. Eligible worker receiving premium pay is not exempt from the Fair Labor Standards Act overtime provisions.

2. Infrastructure Projects Programmatic Data (EC 5)

Programmatic data is requested for Infrastructure projects in addition to data uploaded by bulk template. That additional programmatic data can only be entered manually at this time in Treasury's Portal.

If adding an infrastructure project via the bulk upload method, recipients will be asked to provide additional data in Treasury's Portal screens (see Figure 26), consistent with the [Reporting Guidance](#). Alternatively, recipients can enter all infrastructure project information manually. Please see [Appendix D](#) and the [Reporting Guidance](#) for more information on the additional programmatic data requested for infrastructure projects.

5



Additional Questions

Projected/actual construction start date	Projected/actual initiation of operations date
<input type="text"/>	<input type="text"/>
Location Type(for broadband, geospatial location data)	Location Details
<input type="text" value="--None--"/>	<input type="text"/>
Public Water System (PWS) ID Number	National Pollutant Discharge Elimination System (NPDES) Permit Number
<input type="text"/>	<input type="text"/>

[Add Project](#)

Figure 26 Programmatic Data for Infrastructure Projects

3. Infrastructure Projects with total expected costs over \$10M

Recipients entering infrastructure projects with total expected costs over \$10 million are required to respond to two questions manually. If you expect a project to exceed \$10 million over its lifetime, it is strongly recommended to complete the certifications in advance to avoid future retroactive reporting burden and project-associated expenses.

Recipients are required to provide the following two certifications, or provide additional information:

- a) Davis Bacon Act Certification (see Figures 27 and 28):
 - 1) Select “Yes” or “No” response to Certification question for compliance with Davis-Bacon Act: *Do you intend to certify that “all laborers and mechanics employed by contractors and subcontractors in the performance of the project are paid wages at rates not less than those prevailing, as determined by the U.S. Secretary of Labor in accordance with subchapter IV of chapter 31 of title 40, United States Code (commonly known as the “Davis-Bacon Act”), for the corresponding classes of laborers and mechanics employed on projects of a character similar to the contract work in the civil subdivision of the State (or the District of Columbia) in which the work is to be performed, or by the appropriate state entity pursuant to a corollary state prevailing-wage-in-construction law (commonly known as “baby Davis-Bacon Acts”)?*
 - 2) If response is “No”, enter the following information in the pop-up window:
 - i. The number of employees of contractors and sub-contractors working on the project;
 - ii. The number of employees on the project hired directly and hired through a third party; and
 - iii. The wages and benefits of workers on the project by classification; and
 - iv. Whether those wages are at rates less than those prevailing⁶.

PLEASE NOTE: Selecting "Yes" to 1(a) means that you intend to certify that all contractors and subcontractors are paying prevailing wages and fringe benefits to all laborers and mechanics on the project.

⁶ As determined by the U.S. Secretary of Labor in accordance with subchapter IV of chapter 31 of title 40, United States Code (commonly known as the “Davis-Bacon Act”), for the corresponding classes of laborers and mechanics employed on projects of a character similar to the contract work in the civil subdivision of the State (or the District of Columbia) in which the work is to be performed.



Davis Bacon Certification

* Do you intend to certify that "all laborers and mechanics employed by contractors and subcontractors in the performance of the project are paid wages at rates not less than those prevailing, as determined by the U.S. Secretary of Labor in accordance with subchapter IV of chapter 31 of title 40, United States Code (commonly known as the "Davis-Bacon Act"), for the corresponding classes of laborers and mechanics employed on projects of a character similar to the contract work in the civil subdivision of the State (or the District of Columbia) in which the work is to be performed, or by the appropriate state entity pursuant to a corollary state prevailing-wage-in-construction law (commonly known as "baby Davis-Bacon Acts")

--None--

Figure 27 Davis Bacon Certification

Davis Bacon Certification

* Do you intend to certify that "all laborers and mechanics employed by contractors and subcontractors in the performance of the project are paid wages at rates not less than those prevailing, as determined by the U.S. Secretary of Labor in accordance with subchapter IV of chapter 31 of title 40, United States Code (commonly known as the "Davis-Bacon Act"), for the corresponding classes of laborers and mechanics employed on projects of a character similar to the contract work in the civil subdivision of the State (or the District of Columbia) in which the work is to be performed, or by the appropriate state entity pursuant to a corollary state prevailing-wage-in-construction law (commonly known as "baby Davis-Bacon Acts")

No

Project Employment and Local Impact Report

Number of employees of contractors and sub-contractors working on the project | Number of employees on the project hired directly

Number of employees on the project hired through a third party | Are any of the wages at rates less than those prevailing? --None--

Wages and benefits of workers on the project by classification

Description | Salesforce Sans | 12 | [Rich Text Editor]

Figure 28 Additional Questions if Response to Davis Bacon Certification is "No"

b) Project Labor Agreement Certification (Figures 29 and 30):

- 1) Select "Yes" or "No" response to Certification question for existence of project labor agreement: Do you intend to certify that "the indicated project includes a project labor agreement, meaning a pre-hire collective bargaining agreement consistent with section 8(f) of the National Labor Relations Act (29 U.S.C. 158(f))?
2) If response is "No", enter the following information about a project continuity plan in the pop-up window:
i. How the recipient will ensure the project has ready access to a sufficient supply of appropriately skilled and unskilled labor to ensure high-quality construction throughout the life of the project, including a description of any required professional certifications and/or in-house training;
ii. How the recipient will minimize risks of labor disputes and disruptions that would jeopardize timeliness and cost-effectiveness of the project;
iii. How the recipient will provide a safe and healthy workplace that avoids delays and costs associated with workplace illnesses, injuries, and fatalities, including descriptions of safety training, certification, and/or licensure requirements for all relevant workers (e.g., OSHA 10, OSHA 30);
iv. Whether workers on the project will receive wages and benefits that will secure an appropriately skilled workforce in the context of the local or regional labor market; and
v. Whether the project has completed a project labor agreement.



PLEASE NOTE: Selecting "Yes" to 2(a) means that you intend to or are using an 8(f) pre-hire agreement on your project.

Certification for Labor Agreements

* Do you intend to certify that "the indicated project includes a project labor agreement, meaning a pre-hire collective bargaining agreement consistent with section 8(f) of the National Labor Relations Act (29 U.S.C. 158(f))."

--None--

Figure 29 Certification for Labor Agreements

Certification for Labor Agreements

* Do you intend to certify that "the indicated project includes a project labor agreement, meaning a pre-hire collective bargaining agreement consistent with section 8(f) of the National Labor Relations Act (29 U.S.C. 158(f))."

No

Project Workforce Continuity Plan

How will the recipient ensure the project has ready access to a sufficient supply of appropriately skilled and unskilled labor to ensure high-quality construction throughout the life of the project?

How will the recipient minimize risks of labor disputes and disruptions that would jeopardize timeliness and cost-effectiveness of the project?

How will the recipient provide a safe and healthy workplace that avoids delays and costs associated with workplace illnesses, injuries, and fatalities?

Will workers on the project receive wages and benefits that will secure an appropriately skilled workforce in the context of the local and regional labor market?

Does the project have a completed project labor agreement?

Figure 30 Additional Questions if response is "No"

Once all of the above information is entered, click *Add Project*. Click the *Next* button to proceed to the following screen.

4. Water and sewer projects (EC 5.1-5.15)

Recipients will provide information associated with water and sewer projects, under EC 5.1 through 5.15 when the project starts. Recipients are not required to provide the information if the project has not started. When the "Status of Completion" field is marked "Not Started, the additional questions required for water and sewer projects will not populate.

5. Revenue Replacement

Recipients will have the option to update or provide information associated with revenue replacement not previously provided as part of prior submissions. Information previously provided as part of the Interim Report (if provided) will display in this screen. Depending on your answer to the question, "is your jurisdiction electing to use the standard allowance of up to \$10 million for identifying the revenue loss?" you will be asked conditional questions. Refer to Figure 31.

As outlined in the Final Rule, Recipients will have the option to make a one-time decision to calculate revenue loss according to the formula outlined in the Final Rule or elect a "Standard Allowance" of up to \$10 million, not to exceed the award allocation, to spend on government services throughout the period of performance.



For recipients calculating revenue loss according to the formula, note that the Final Rule permits recipients are permitted to choose whether to use calendar or fiscal year calculation dates. Recipients must use the same calculation time frame (calendar or fiscal year) throughout the award period.

For recipients electing the “Standard Allowance,” Treasury will presume that up to \$10 million, not to exceed the award allocation, in revenue has been lost due to the public health emergency and recipients are permitted to use that amount to fund “government services.” Please note that electing the standard allowance does not change a recipient’s total allocation.

Treasury’s Portal will allow all recipients to elect to use this standard allowance instead of calculating lost revenue using the formula. Refer to Figure 31. The following question will display in the screen for all recipients, including those with total allocations of \$10 million or less:

- Is your jurisdiction electing to use the standard allowance of up to \$10 million, not to exceed your total award allocation, for identifying revenue loss? Yes/No (Please note electing the standard allowance does not change your total allocation).

Based on the recipient’s election, certain information will display in Treasury’s Portal which the recipient will need to complete, as noted in the table below:

Data	Standard Allowance – Yes	Standard Allowance- No
Base Year Revenue	N/A	Required
Fiscal Year End Date	N/A	Required
Growth Adjustment Used	N/A	Required
Actual General Revenue as of 12 months ended December 31, 2020	N/A	Required
Estimated Revenue Loss	N/A	Required
Select whether Fiscal Recovery Funds were used to a make a deposit into a pension fund. Please note that no recipients except for Tribal governments may use Fiscal Recovery Funds to make a deposit to a pension fund	Required	Required
Provide an explanation of how revenue replacement funds were allocated to government services: Please provide an explanation	Required	Required



Revenue Replacement Key Inputs Import Interim Report data

Select Year
2020

*Is your jurisdiction electing to use the standard allowance of up to \$10 million for identifying the revenue loss?
No

*Base Year General Revenue *Growth Adjustment Used

*Fiscal Year End Date

*Actual General Revenue as of 12 months ended December 31, 2020

*Estimated Revenue Loss Due to Covid-19 Public Health Emergency as of December 31, 2020

*Were Fiscal Recovery Funds used to make a deposit into a pension fund?
--None--

*Please provide an explanation of how revenue replacement funds were allocated to government services
Salesforce Sans 12 [Rich Text Editor]

Figure 31 Revenue Replacement Screen

e) To enter projects using the bulk upload method:

Recipients have the option to provide project information via bulk upload, in lieu of manual entry for some or all of their projects. Please note, bulk upload templates are specific to the EC the project best aligns to. The table in [Appendix C](#) provides a mapping of project ECs to their appropriate bulk upload template.

1. Fill the downloaded template with information specific to each project’s EC, as follows. Projects within the same EC or set of ECs covered by a given template can be uploaded together. For example, all projects in EC 2.1 to 2.5 (Negative Economic Impacts) can be entered together on the Project Bulk Upload for Project EC 2.1-2.5 Template. Optional fields are denoted by (*). “Column” below refers to the applicable area in the bulk upload file.
 - Column B: Select the Project Expenditure Group
 - Column C: Select the Expenditure Category
 - Column D: Enter the Project Name
 - Column E: Enter the unique project identification number assigned by the State or U.S. Territory to the project. Do not use duplicate project numbers for multiple projects
 - Column F: Select the completion status of the project
 - Column G: Enter the total dollar value of the adopted budget for this project * *(only applicable to States, U.S. Territories, and metropolitan cities and counties with population over 250,000)*
 - Column H: Enter the total dollar value of obligations for this project. If no amounts are obligated, enter “0”



- Column I: Enter the total dollar value of expenditures for this project. If no expenditures have been incurred, enter “0”
 - Column J: For projects in EC 1, EC 2, or EC 3, enter a yes or no response to the question, does this project include a capital expenditure?
 - Column K: If yes, what is the total expected cost of the capital expenditure?
 - Column L: Enter a description of the project
 - Column M: Enter a brief description of the structure and objectives of assistance program(s) (e.g., nutrition assistance for low income households)
 - Column N: Enter the number of households served (by program if recipient establishes multiple separate household assistance programs)
 - Column O: Enter a brief description of recipient’s approach to ensuring that aid to households responds to a negative economic impact of Covid-19.
2. Upload the Project Entry and Status template, in this case the template for EC 2.1-2.5, separately as a .csv file by using the respective *Upload* button on the screen or dropping the files in this view.
 3. Once all of the above information is entered, click *Add Project*. Click the *Next* button to proceed to the following screen.

Refer to [Appendix B](#) for additional information related to the bulk file upload process

f) Subrecipients or Beneficiaries

The Subrecipients or Beneficiaries Profile documents the information about each subrecipient or beneficiary that has received at least one Subaward or Direct Payment of federal funding greater than \$50,000 to execute projects supporting the SLFRF program. Please note that projects entered under EC 6.1 Provision of Government Services are not required to enter Subrecipient, Subaward, or Expenditures (for a subaward) information for the January reporting cycle. The Subrecipients or Beneficiaries module allows users to enter data manually or leverage the bulk file upload capability. For bulk-upload instructions specific to this submodule, see [Appendix B](#). You can download the bulk file template for use in submitting the required data via bulk upload. When ready to submit the data, use the upload button (see Figure 32).

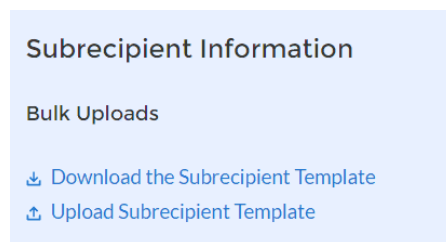


Figure 32 Subrecipient Bulk Upload Icon

Note: When using the bulk file upload capability, the Subrecipient bulk upload must be completed prior to beginning the data entry for the Subawards module.



If you choose to individually enter records, follow the instructions below.

1. Enter the relevant Subrecipient or Beneficiary information in each of the required fields (see Figure 33). Recipients must enter at least one of the following three identifiers for a subrecipient: UEI (Unique Entity Identifier), DUNS, or TIN.

Subrecipient Information

Bulk Uploads

[Download the Subrecipient Template](#) [Upload Subrecipient Template](#)

Manual Entry

UEI:

DUNS:

DUNS (+4):

TIN:

*Legal Name:

POC Email Address:

*Address Line 1:

Address Line 2:

Address Line 3:

*City:

*Zip:

*State:

Zip+4:

Figure 33 Manually Create a Subrecipient or Beneficiary

2. If the subrecipient or beneficiary is not registered in SAM.Gov, select “No” from the picklist. Two additional questions will populate the space below (see Figure 34).

* Is the subrecipient registered in SAM.gov?

* In its preceding fiscal year, did the recipient receive 80% or more of its annual gross revenue from federal funds?

* In the preceding fiscal year, did recipient receive \$25 million or more of its annual gross revenue from federal funds?

Figure 34 Sam.gov Questions for Subrecipients

3. If the recipient received 80% or more of its annual gross revenue from federal funds AND the recipient received \$25 million or more of its annual gross revenue from federal funds, an additional question will appear (see Figure 35).



* Is the subrecipient registered in SAM.gov?

No

* In its preceding fiscal year, did the recipient receive 80% or more of its annual gross revenue from federal funds?

Yes

* In the preceding fiscal year, did recipient receive \$25 million or more of its annual gross revenue from federal funds?

Yes

* Is the "total compensation" for the organization's five highest paid officers publicly listed or otherwise listed in SAM.gov?

--None--

Figure 35 Additional SAM.gov questions for Subrecipients

4. Select "Yes" if the total compensation for the organization's five highest paid officers is publicly listed or otherwise listed in SAM.Gov and move on to step 6 below.
5. Select "No" if the total compensation for the organization's five highest paid officers is not publicly listed or otherwise listed in SAM.Gov. Enter the name(s) of the officer(s) in the chart that will appear (see Figure 36) and the total compensation received by each. If fewer than five (5) officers exist, enter "N/A" and \$0 in the empty field(s).

* Is the subrecipient registered in SAM.gov?

No

* In its preceding fiscal year, did the recipient receive 80% or more of its annual gross revenue from federal funds?

Yes

* In the preceding fiscal year, did recipient receive \$25 million or more of its annual gross revenue from federal funds?

Yes

* Is the "total compensation" for the organization's five highest paid officers publicly listed or otherwise listed in SAM.gov?

No

* If no, please enter the information below. If number of officers is less than 5, please enter N/A for Name and 0 for Total Compensation.

No.	Name	Total Compensation
1	<input type="text"/>	<input type="text"/>
2	<input type="text"/>	<input type="text"/>
3	<input type="text"/>	<input type="text"/>
4	<input type="text"/>	<input type="text"/>
5	<input type="text"/>	<input type="text"/>

[Create Subrecipient](#)

Figure 36 Five Highest Paid Officers for Subrecipients or Beneficiaries

6. At the bottom of the page, click the *Create Subrecipient* icon to complete the Subrecipient record and return to Subrecipient screen.
7. Subrecipient or Beneficiaries entered into the system are shown at the bottom portion of the screen (see Figure 37).



My Subrecipients

Search

Records per page: 10 Page: 1 of 0

Name	Duns	TIN	POC Email

Figure 37 Subrecipients Entered

g) Subawards or Direct Payments

The Subawards or Direct Payments section allows recipients to enter the required information regarding Subawards or Direct Payment of federal funding greater than \$50,000 for all direct payments, subawards, and contracts made by your organization under SLFRF. Please note that projects entered under EC 6.1 Provision of Government Services are not required to enter Subrecipient, Subaward, or Expenditures (for a subaward) information for the January reporting cycle.

The Subawards or Direct Payments module allows users to enter data manually or leverage the bulk file upload capability. For bulk-upload instructions specific to this submodule, see [Appendix B](#). You can download the bulk template using the provided link in Treasury’s Portal before using the upload button (see Figure 38).

Subaward Information

*Project Name:

Search Projects...

- 10 Mil Test
Project ID: 13370
- 5.16-5.17 Test
Project ID: 1231
- Manual Creation Test
Project ID: 5123
- Bulk Upload Project 1
Project ID: 42342
- Bulk Upload Project 2
Project ID: 42343

Figure 38 Subaward Bulk Upload (1)

Subaward Information

*Project Name: JG x

FAIN: 3111

Bulk Uploads

Download Subaward Template

Subaward Bulk Upload

Figure 38 Subaward Bulk Upload (2)

Note: Subaward bulk upload can only be completed after Subrecipient bulk upload is completed.



If you choose to individually enter records, follow the instructions below.

1. Enter the following fields pertaining to the Subawards or Direct Payments (see Figure 39):
 - Subrecipient or Direct Payment Recipient Name from the picklist
 - Subaward Number
 - Subaward Amount (Obligation)
 - Subaward Date
 - Period of Performance Start
 - Period of Performance End
 - Place of Performance Address, City, State, Zip, Zip+4
2. Select the Subaward Type from the drop-down picklist:
 - Contract: Purchase order
 - Contract: Delivery order
 - Contract: Blanket Purchase Agreement
 - Contract: Definitive contract
 - Grant: Lump sum Payment(s)
 - Grant: Reimbursable
 - Loan - Maturity prior to 12/31/26 with planned forgiveness (*please see note below on use of loans*)
 - Loan - Maturity prior to 12/31/26 without planned forgiveness (*please see note below on use of loans*)
 - Loan - Maturity past 12/31/26 with planned forgiveness (*please see note below on use of loans*)
 - Loan - Maturity past 12/31/26 without planned forgiveness (*please see note below on use of loans*)
 - Direct Payment
 - Transfer: Lump Sum Payment(s)
 - Transfer: Reimbursable



Manual Entry

*Subrecipient Name:

*Subaward No.:

*Subaward Type:

*Subaward Amount (Obligation):

*Subaward Date:

*Period of Performance Start:

*Period of Performance End:

*Place of Performance Address 1:

Place of Performance Address 2:

Place of Performance Address 3:

*Place of Performance City:

*Place of Performance State:

*Place of Performance Zip:

Place of Performance Zip+4:

*Brief description of Subaward and its underlying eligible use (750 characters):

Create Subaward

Figure 39 Subaward Reporting

3. Click *Create Subaward* to establish the Subaward record. Repeat Steps 1 through 3 to create additional Subaward records.
4. Subawards entered into the system are shown at the bottom portion of the screen (see Figure 40).

My Subawards

Records per page: 10 Page: 1 of 0

Project Name	Award No	Award Amount	Subrecipient Name
--------------	----------	--------------	-------------------

Figure 40 Subaward Entered

h) Expenditures

In the Expenditures tab, recipients will provide information for each contract, grant, loan, transfer, or direct payment greater than \$50,000. Additionally, aggregate reporting is required for contracts, grants, transfers made to other government entities, loans, direct payments, and payments to individuals that are less than \$50,000. If aggregated expenditures linked to a project equal the total Expenditures reported for that project, the Subaward status box on the My Projects screen is changed to 'Complete'. Please note that projects entered under EC 6.1 Provision of Government Services are not required to enter Subrecipient, Subaward, or Expenditures (for a subaward) information for the January reporting cycle.

The Expenditures reporting module allows users to enter data manually or leverage the bulk file upload capability. For bulk-upload instructions specific to this submodule, see [Appendix B](#).

If you do not use the bulk upload function, follow the steps listed below.



1. To report new expenditures under a specific subaward, enter the subaward number. The Project Name associated with the subaward will auto populate.
2. Enter the following:
 - Expenditure Start Date
 - Expenditure End Date
 - Expenditure Amount
3. Enter narrative for Administrative Costs, if applicable.
4. If Subaward Type is a grant, verify the Subrecipient’s compliance with the conditions of the grant through the drop-down picklist. If the Subrecipient is non-compliant, provide a brief explanation regarding non-compliance.
5. Click the *Create Expenditure* button to submit the record. Repeat Steps 1 through 6 to report additional sub-award expenditures. Proceed to the next segment once all sub-award expenditures are reported.

1. Expenditures Greater than \$50,000

For expenditures for awards greater than \$50,000, fill out the “Expenditures for Awards > \$50,000” box (see Figure 41). Project name and subaward will be selected to link each expenditure to the appropriate entries. Note that the Project name is automatically identified based on the associated Subaward No. entered. Once the information has been entered, click the *Create Expenditure* button on the bottom left of the box.

Expenditures > \$50,000

In the below section, please provide further detail on each award for, and subsequent expenditure of, \$50,000 or more. Your organization must identify a subaward identifier to each expenditure. In addition, you must also provide the: Expenditure Date and Expenditure Amount, as well as any required information for specific Subaward types.

Project Name ●

Bill San
x

Bulk Uploads

[Download Bulk Upload Template](#) [Upload Bulk Upload Template](#)

Manual Entry

Subaward No	Subaward Amount	Subaward Type	Subrecipient Name
Complete this field.	\$10	Contract: Delivery Order	Hogwarts

Expenditure Start ●	Expenditure End ●	Expenditure Amount ●
--	--	---

Create Expenditure

Figure 41 Expenditures >\$50,000

Alternatively, the Expenditures for Awards greater than \$50,000 bulk upload template (Figure 40) may be used and uploaded with the relevant information.



2. Expenditures Less than \$50,000

For expenditures for awards less than \$50,000 fill out the “Aggregate Expenditures < \$50,000” box (see Figure 42). Once the information has been entered, click the *Create Expenditure* button on the bottom left of the box. Note the need to manually identify the Project Name as no Subaward is necessary for Aggregate Expenditures less than \$50,000.

Aggregate Expenditures < \$50,000

For disbursements less than \$50,000, please provide the aggregate expenditures and obligations for the current reporting period and total to date. Your organization must assign project and subaward identifiers to each aggregate expenditure.

Project Name
JG x

Bulk Uploads

[Download Bulk Upload Template](#)
[Upload Bulk Upload Template](#)

Manual Entry

Subaward Type (Aggregates)
--None--

Total Period Expenditure Amount

Total Period Obligation Amount

Cumulative Expenditures
\$0.00

Cumulative Obligations
\$0.00

[Create Expenditure](#)

Figure 42 Aggregated Expenditures <\$50,000

Aggregate subaward types available for selection are as follows.

- Aggregate of Contracts Awarded
- Aggregate of Grants Awarded
- Aggregate of Loans Issued
- Aggregate of Transfers
- Aggregate of Direct Payments

Alternatively, the Aggregate Expenditures less than \$50,000 bulk upload template may be used and uploaded with the relevant information.

3. Payments to Individuals

For disbursements to individuals less than \$50,000, recipients should complete the “Payments to Individuals” box (see Figure 43) with expenditure information. Once this information has been entered, click the *Create Expenditure* button on the bottom left of the box.



Payments to Individuals

For disbursements to individuals less than \$50,000, please provide the aggregate expenditures and obligations for the current reporting period and total to date.

Project Name

Bulk Uploads
[Download Bulk Upload Template](#)
[Upload Bulk Upload Template](#)

Manual Entry

Total Period Expenditure Amount <input type="text"/>	Total Period Obligation Amount <input type="text"/>
Cumulative Expenditures \$0.00	Cumulative Obligations \$0.00

[Create Expenditure](#)

Figure 43 Payments to Individuals

Alternatively, the Payments to Individuals bulk upload template (Figure 43) may be used and uploaded with the relevant information. Note the need to manually identify the Project Name as no Subaward is necessary for Payments to Individuals less than \$50,000.

Once entries are complete, click the *Next* button on the bottom right of the page. This will bring recipients to the Report tab.

i) Tax Offset Provision (Only for States and U.S. Territories)

Baseline revenue or revenue-increasing covered charges information are not required at this time. State and U.S territory recipients should provide the amount of revenue-reducing covered changes covering the periods of date of award through July 31, 2021 and separately, August 1, 2021 through December 31, 2021. (See Figure 44).

See Section C (11) of the [Reporting Guidance](#) for additional information.

Additional guidance will be forthcoming for additional reporting requirements regarding the tax offset provision.

Ineligible Activities: Tax Offset Provision

For the initial reporting year, States and territories will report the following items related to the Tax Offset Provision 31 CFR 35.8. Baseline revenue or revenue-increasing covered charges are not required at this time. Please provide the amounts for Revenue-reducing covered changes covering the periods of date of award through July 31, 2021 and August 1, 2021 – September 30, 2021.

*Revenue-reducing Covered Changes from date of award through July 31, 2021

*Revenue-reducing Covered Changes from August 1, 2021 – September 30, 2021

[Save](#)

Figure 44 Tax Offset Provision Screen



j) Official Certification

On this screen, the Authorized Representative for Reporting (ARR) will be asked to certify information pertaining to the Project and Expenditure. By certifying this submission, the ARR is confirming that all reported information is accurate and approved for submission (see Figures 45 and 46).

Users who are not designated as an ARR will not be presented with the screen.

1. The ARR's Name, Title, Telephone Number, and E-Mail Address will be presented on screen for review.
2. Allow the Certifying Official to review all prior screens and entries to verify accuracy of the inputted record.

Official Certification

Statement

I certify that the information provided is accurate and complete after reasonable inquiry of people, systems, and other information available to the SLFRF recipient. The undersigned acknowledges that any materially false, fictitious, fraudulent statement, or representation (or concealment or omission of a material fact) in this submission may be the subject of criminal prosecution under the False Statements Accountability Act of 1996, as amended, 18 USC 1001, and also may subject me and the SLFRF Recipient to civil penalties, damages, and administrative remedies for false claims or otherwise (including under 31 USC 3729 et seq.) The undersigned is an authorized representative of the SLFRF Recipient with authority to make the above certifications and representations on behalf of the SLFRF Recipient.

By signing this report, the Authorized Representative for Reporting acknowledges in accordance with 31 CFR 35.4(c) that recipients shall provide to the Secretary periodic reports providing detailed accounting of the uses of funds, as applicable, all modifications to a State's or Territory's tax revenue sources, and such other information as the Secretary may require for the administration of this program. In addition to regular reporting requirements, the Secretary may request other additional information as may be necessary or appropriate, including as may be necessary to prevent evasions of the requirements of this program. False statements or claims made to the Secretary may result in criminal, civil, or administrative sanctions, including fines, imprisonment, civil damages and penalties, debarment from participating in Federal awards or contracts, and/or any other remedy available by law.

Figure 45 Official Certification

3. Verify information included in Figure 46 and confirm that the values presented are as expected based on the information included or uploaded in previous screens.



Name of Current Login User

The information for the currently signed in user will populate as the Authorizer of this submittal. Only those in Role of Authorized Representative for Reporting or Authorized Representative on the Submission record will have access to Certify and Submit.

Name: [Redacted] Telephone: [Redacted]

Title: Tester Email: [Redacted]

Total Number of Projects : 2

Total Obligations: Total Expenditures: \$100,000.00

[Back](#) [Certify and Submit](#)

Figure 46 Summary of Reported Information

- When certifying and submitting the report, a confirmation box will appear asking if the recipient is sure it wants to submit (see Figure 47).

Subrecipients representations on behalf of the SLFRF Recipient.

Subawards

Expenditures

Recipient Specific

Certification By signing this report, the Authorized Representative for Reporting acknowledges in accordance with 31 CFR 35.4(c) that recipients shall provide to the Secretary periodic reports providing detailed accounting of the uses of funds, as applicable, all modifications to a State's or Territory's tax revenue sources, and such other information as the Secretary may require for the administration of this program. In addition to regular reporting requirements, the Secretary may request other additional information as may be necessary or appropriate, including as may be necessary to prevent evasions of the requirements of this

Report Period
Quarter 2 2023 (April-June)

Reporting Period Start Date
4/1/2023

Reporting Period End Date

Are you sure you want to submit?

[Cancel](#) [Submit](#)

Name: [Redacted] Telephone: [Redacted]

Figure 47 Submission Verification

- Once all of the information is validated, click the *Submit* button to complete the entry.



Appendix A – Designating SLFRF Points of Contact by SLFRF Account Administrators

This section provides a brief instruction for SLFRF Account Administrators on accessing Treasury’s Portal to provide the names and contact information of officials to be designated as your organization’s points of contact for the SLFRF award(s). The following pages provide step-by-step guidance. See FAQ Section B for commonly asked questions/answers on this topic.

Note- the screens noted below may be subject to change.

Section A: Instructions

Step 1

You must be registered in the ID.me or Login.gov system to access Treasury’s Portal. If you have questions about registering in ID.me or Login.gov, please email SLFRP@treasury.gov.

Step 2

Once you are registered in ID.me or Login.gov, click on the link in the email you received requesting the POC designations. If you do not have the email link, please email us via SLFRP@Treasury.gov and we will provide the link.

Step 3

The link will take you to the Treasury Portal “State, Local, and Tribal Support” landing page as shown below. Once on that page, click on the *Go to Your Reports* button at the bottom left of the screen, as indicated in by the red box below.

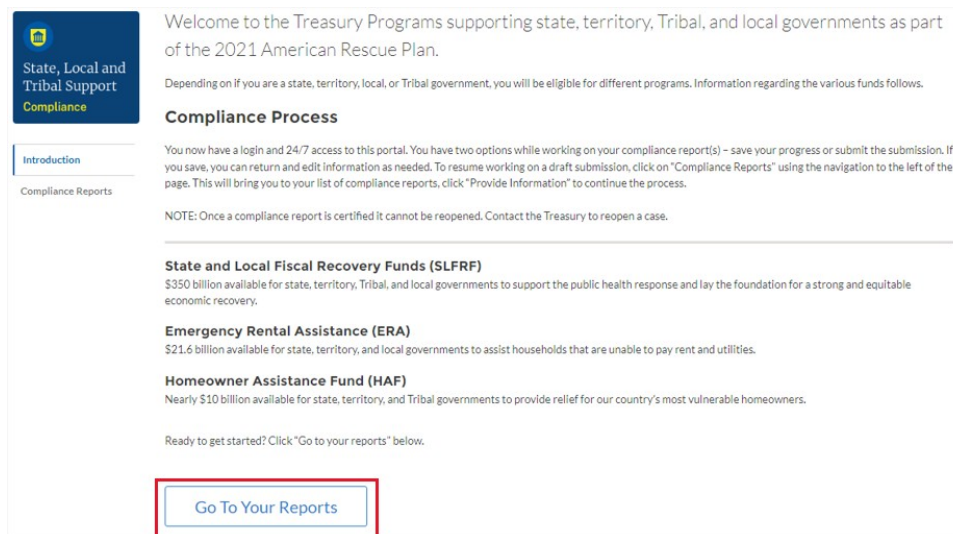


Figure 48- State, Local, and Tribal Support Landing Page

Step 4

The green *Go to Your Report* button will take you to the Submissions and Compliance page as shown below. Once on that page, click on the three-line navigation icon at the top left of the screen. The red box indicates the icon.

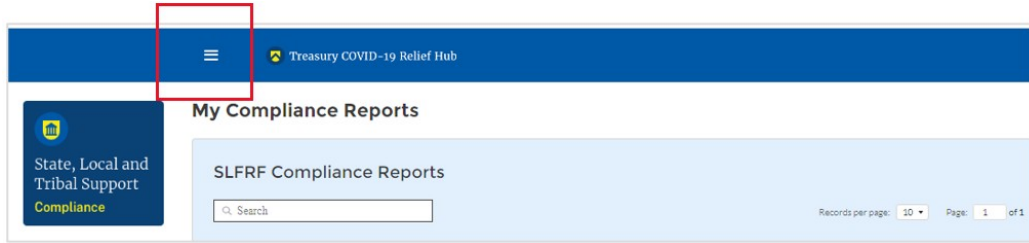


Figure 49- My Compliance Reports

Step 5

After clicking on the three-line navigation icon, a drop-down menu will appear on the top left of the screen as shown below. Please click on “Account” from the drop-down menu, as shown by the red box below.

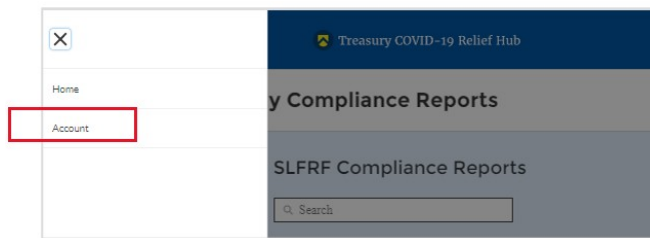


Figure 50- Account

Step 6

Next you will see the screen below. Under the “Account Name” heading, click on the name of your organization (as shown by the red box).

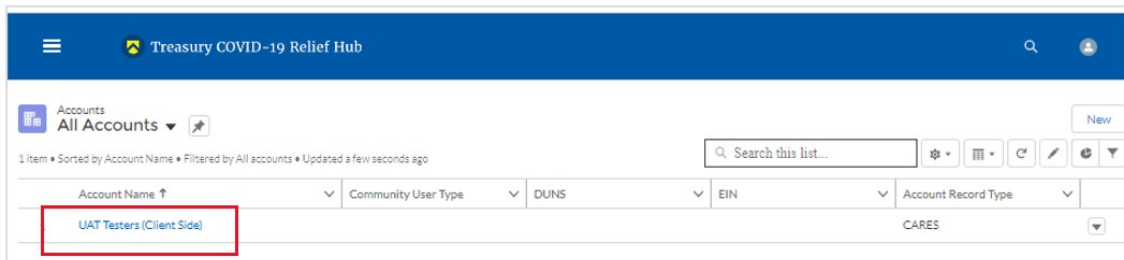


Figure 51 – Account Name

Step 7

By clicking the name of your organization, Treasury’s portal will open to allow you to provide names and contact information on your organization’s designees for the SLFRF reports, as shown below. The landing page provides basic information about the designations. Please see section B for more details about the roles and responsibilities for each or the three roles.



Figure 52 – Landing Page

Step 8

When you are ready to key in the names of the designated individuals, click on the *Certification* button on the left navigation bar, as noted in the red box shown below.



Figure 53- Certification

Step 9

On the “Official Certification of Authorization” screen, you should type in your name to indicate you are authorized to submit the names of the designated individuals. Once you enter your name, click on the *Submit* button.



Treasury COVID-19 Relief Hub

Introduction

Certification

Designation Form

Official Certification of Authorization

I certify that I am authorized by the recipient/grantee to submit the above names of individuals, who are authorized to act on behalf of the recipient in the roles identified above for purposes of reporting on its award under the program. I acknowledge that any materially false, fictitious, fraudulent statement, or representation (or concealment or omission of a material fact) may be punishable by fine or imprisonment or both under the False Statements Accountability Act of 1996, as amended 18 U.S.C. § 1001, and also may subject me to civil penalties and administrative remedies for false claims or otherwise (including under to 31 U.S.C. §§ 3729 and 3730).

Signature of Account Administrator [Type name/signature equivalent]:

Submit

Figure 54- Official Certification of Authorization

Step 10

Next, click on the *Designation Form* button on the left navigation bar, as noted by the red box shown below.

Treasury COVID-19 Relief Hub

Introduction

Certification

Designation Form

Official Certification of Authorization

I certify that I am authorized by the recipient/grantee to submit the above names of individuals, who are authorized to act on behalf of the recipient in the roles identified above for purposes of reporting on its award under the program. I acknowledge that any materially false, fictitious, fraudulent statement, or representation (or concealment or omission of a material fact) may be punishable by fine or imprisonment or both under the False Statements Accountability Act of 1996, as amended 18 U.S.C. § 1001, and also may subject me to civil penalties and administrative remedies for false claims or otherwise (including under to 31 U.S.C. §§ 3729 and 3730).

Signature of Account Administrator [Type name/signature equivalent]:

Submit

Figure 55- Designation Form

Step 11

Clicking on the *Designation Form* button will open the “Designation of Account Administrator, Point of Contact for Reporting, and Authorized Representative for Reporting” screen shown below.

Treasury COVID-19 Relief Hub

Introduction

Certification

Designation Form

Program Name: Emergency Rental Assistance

Designation of Account Administrator, Point of Contact for Reporting, and Authorized Representative for Reporting

Please provide contact information for up to three individual(s) who will serve in the following roles for this ERA1 or ERA2 award

- 1) Account Administrator
- 2) Point of Contact for Reporting
- 3) Authorized Representative for Reporting

An individual may serve in one or more roles.

Please provide the designees for the ERA1 or ERA2 award only, as listed in the Introductory email note.

Please select “complete” after you have provided the contact information for all designees.

Please note: you can save the fillable form and return to it later using the link in the email note.

Please direct any questions to EmergencyRentalAssistance@Treasury.gov. Please include “POCs for Reporting” in the subject of your email note.

Salutation: --None--

Title:

Program-Roles:

First Name:

Phone:

Middle Name:

Email:

Last Name:

Name of Entity/Organization:

Suffix:

Complete **Edit my current roles**

Name	Title	Phone	Email	Roles



Figure 56- Designation of Account Administrator, Point of Contact for Reporting, and Authorized Representative for Reporting

You can use the Designation Form to enter the names and contact information for each of the three designations for each of your SLFRF allocations.

The roles for the SLFRF allocations are displayed as follows:

- SLFRF – Account Administrator
- SLFRF – Point of Contact for Reporting
- SLFRF – Authorized Representative for Reporting

The Designation Form screen shows nine data fields for entering key information about the individual being designated. These include:

- Salutation (optional)
- First Name
- Middle Name (optional)
- Last Name
- Suffix (optional)
- Title
- Phone
- Email
- Name of Entity/Organization (Recipient entity)

Note: The screen will display a list at the bottom of the screen with the names and contact information of individuals (if any) who have previously been designated for any of the three roles. This list will be important in maintaining and updating your organization's designees in the future.

a. Designation of the Account Administrator

Remember, we have temporarily authorized you as the SLFRF – Account Administrator. There is no need to re-enter your name and contact information if you plan to continue in that role. If you need to designate someone else as the SLFRF Account Administrator,

- Find your name at the bottom of the screen.
- Hit the blue *Edit* button located to right of your name.
- Enter the name and contact information of the new SLFRF Account Administrator.
- Hit the blue *Complete* button.

b. Designation of Point of Contact for Reporting and Authorized Representative for Reporting

- Enter the next designee's name and contact information.
- After entering their name and required contact information, select the Program Role(s) for which he/she is being designated.
- Once the role is selected, click on the small arrow to the right of the role, which will move the role to the box on the right.
- Click on the *Complete* button at the bottom of the screen.



- Follow the same process for each of the remaining designees.
- When you have entered all three designations, please press the *Complete* button.
- As a final step, go to the icon on the upper right of the screen as shown below to exit the system.

Program Name: Emergency Rental Assistance

Designation of Account Administrator, Point of Contact for Reporting, and Authorized Representative for Reporting

Please provide contact information for up to three individual(s) who will serve in the following roles for this ERA1 or ERA2 award

- 1) Account Administrator
- 2) Point of Contact for Reporting
- 3) Authorized Representative for Reporting

An individual may serve in one or more roles.

Please provide the designees for the ERA1 or ERA2 award only, as listed in the introductory email note.

Please select "complete" after you have provided the contact information for all designees.

Please note: you can save the fillable form and return to it later using the link in the email note.

Please direct any questions to EmergencyRentalAssistance@Treasury.gov. Please include "POCs for Reporting" in the subject of your email note.

Salutation --None--	Title .Manager	Program Roles
First Name George	Phone 223.222.2222	
Middle Name	Email George@mmm.edu	
Last Name Johnson	Name of Entity/Organization ERA west	
Suffix		

[Complete](#) [Edit my current roles](#)

Figure 57- Designation Form

Section B: Questions and Answers

Who is authorized to designate the Account Administrator, the Point of Contact for Reporting, and the Authorized Representative for Reporting for my organization’s SLFRF’s award?

Treasury requests that each SLFRF should follow its own decision-making procedures in making the three designations for each award.

What is the deadline for making the designation?

Treasury requests that users of Treasury’s portal make the three designations as soon as possible to enable your organization to submit its Interim Report and Recovery Plan Performance Report (if applicable).

What are the responsibilities for each of the three designated roles?

The required roles are as follows:

- **Account Administrator** for the SLFRF award has the administrative role of maintaining the names and contact information of the designated individuals for SLFRF reporting. The Account Administrator is also responsible for working within your organization to determine its designees for the roles of Point of Contact for Reporting and Authorized Representative for Reporting and providing their names and contact information via



Treasury's Portal. The Account Administrator can also view and submit reports. Finally, the Account Administrator is responsible for making any changes or updates as needed over the award period. We recommend that the Account Administrator identify an individual to serve in his/her place in the event of staff changes.

- **Point of Contact for Reporting** is the primary contact for receiving official Treasury notifications about reporting on the SLFRF award, including alerts about upcoming reporting, requirements, and deadlines. The Point of Contact for Reporting is responsible for completing the SLFRF reports but cannot certify and submit these reports.
- **Authorized Representative for Reporting** is responsible for certifying and submitting official reports on behalf of the SLFRF award recipient. Treasury will accept reports or other official communications only when submitted by the Authorized Representative for Reporting. The Authorized Representative for Reporting is also responsible for communications with Treasury on such matters as extension requests and amendments of previously submitted reports. The official reports may include special reports, monthly reports, quarterly reports, interim reports, and final reports.

May my organization designate one individual for multiple roles?

Yes, an individual may be designated for multiple roles. For example, the individual designated as the Account Administrator can also be designated as the Authorized Representative for Reporting or Point of Contact for Reporting. It is also acceptable for an organization to designate one individual for all three roles however it should also adhere to any applicable rules on personnel checks and balances.

May my organization designate more than one individual per role?

Yes, you may designate more than one person per each role but are encouraged to limit the number of users assigned to each role.

May my organization change the designations from time to time?

Yes, an organization may make changes and updates to the list of designation individuals whenever needed.

Must each of the designated individuals register for using Treasury's Portal?

Yes, everyone designated for any of the roles must register with ID.me or Login.gov before they will be given access to Treasury's portal. Please contact us at the email address below for more information and guidance on registering with ID.me or Login.gov. If you are already registered with ID.me, you do not have to register to Login.gov to access your reports.

Additional Questions or Additional Assistance?

If you have additional questions about accessing or using Treasury's portal to provide the designees' names and contact information, please send us an email via SLRFP@treasury.gov.



Appendix B – Bulk File Upload Overview

a) Purpose

This Appendix provides an overview of the SLFRF bulk file upload process. The six (6) bulk file upload templates listed below are presented in the order in which they should be populated and submitted to the SLFRF Treasury Portal. The data requirements for each template can be found in subsequent sections of this Appendix. The templates can be downloaded directly from the [State and Local Fiscal Recovery Fund Treasury Portal](#).

1. Project Baseline Template (*Note: This template will be used for Expenditure Categories (1.1-1.8, 1.10-1.12, 2.6-2.13, 3.6-3.16, 7.1-7.3)*)
2. Subrecipient Template
3. Subaward Template
4. Expenditures GT \$50,000 Template
5. Aggregate Expenditures LT \$50,000 Template
6. Payments to Individuals LT \$50,000 Template

b) Expenditure Category (EC) Templates

Expenditure Categories (EC) which require additional programmatic data and other information are listed below. The reporting requirements for each EC can be found in [Appendix D](#).

1. Project Baseline Template
2. Project EC 1.9 Template
3. Project EC 2.1 - 2.5 Template
4. Project EC 2.14 Template
5. Project EC 3.1 - 3.5 Template
6. Project EC 4.1 - 4.2 Template
7. Project EC 5 Template

c) Template Description

Each of the bulk file upload templates contains instructions on how to populate the respective fields within each file. When adding content to each template, please follow the “Help” text, which will provide what is and isn’t permitted for each cell. Each Module in the web application provides a link to download the template. All templates have the same structure as described below:

Row 1: Template Version

Row 2: Template Name

Row 3: Instructions: Brief description of the template constraints.

Row 4: Field IDs: Column identifiers

Row 5: Required or Optional: This field specifies if the field is optional or required. When the column is required, and a recipient does not provide the required data, the system will not accept any record or allow the file to be uploaded.



Row 6: Field Name: Brief description of each Field or Column

Row 7: Field Help Text: Provides a description of the column. There are 2 types of fields, 1). an open value either text or numbers and 2). A predefined list of pick list values:

- Open Value: Any text or number. Text for State name or a Number that represents amounts. Most text types are free formats, the only expectation is for Dates, each column that represents a date describes the accepted format. For any number field, it is not required to add “,” to represent thousands or it is not required to add “\$” to represent currency. Only add decimal “.” when needed.
- Pick List: A Predefined list of values that is accepted by the system. When the column is a pick list, row 7 provides the list of options that the system accepts. End users should “copy and paste” the valid value for each record. If the respondent provides a value that is not in the predefined pick list, the system will not accept the file. Responses should not contain double quotes

Row 8: Data that Recipient submits. Row 8 is where recipients insert specific data to submit. The system accepts 1 or many rows.

The following is special guidance for each row or set of rows:

1. Do not change the content of rows 1 to 7.
2. Rows 4 to 7 provide metadata of each data element or column of the information that respondents will provide.
3. Add your data beginning in row 8, column B.

d) Bulk Upload Process

The upload process includes the following steps:

1. Download the template from the link provided in the web application section of the module.
2. Open the template in Microsoft Excel.
3. Save the template as a .CSV file and change the name of the file as needed.
4. Add your data starting with row 8, column B of the applicable template.
5. When you finish adding your data repeat step 4.
6. Upload the new file to the portal. The system will provide a message if the upload was successful or unsuccessful.
7. Reuse the same file if the upload process fails. Reconcile the issues that the system indicated and repeat step 7 until all issues are corrected.

e) Bulk Upload Creation Steps

The collective bulk file upload process is contingent upon end-users following the below steps to ensure successful submission



Note: All data submitted via the bulk upload functionality must be submitted as a .CSV file.

f) **CSV Guidance**

Refer to the following link for descriptions of the CSV format.

https://en.wikipedia.org/wiki/Comma-separated_values

g) **Specific CSV characteristics**

- The date format is: MM/DD/YYYY. Example:
 - a. 06/22/2021
- All currency values are numeric. It is not required to add “,” for thousand or millions.
- All currency values should not contain a “\$” sign. The file will be rejected if a “\$” is included in the data entry.
- Once you’ve saved the excel spreadsheet as a .csv file, do not re-open the file. Re-opening the file will cause excel to possibly revert to an .xls type file and leading zeros or other issues may occur,

h) **Upload Template Description**

Each data element and/or column in the CSV files is described below:

- Index No: Reference number for the data element. For internal use only.
- Defined term: Column Short description.
- Definition: Column long description or definition.
- CSV Column Name: The column header name that must be used in the CSV file.
- Required: Indicates if the column is required or not required.
- List Value: The content of the column is from a list of predefined values. This is valid for some of the columns. The list is provided for all cases. Most of the cases is N/A which means that the type is ether String or Numeric.
- Data type: Specify the data type of the column. The options are: Numeric, Text, Date and Pick List.
- Max Length: Indicates the maximum length in characters that is allowed for each column.

i) **Project Baseline Template**

The downloadable templates provide all information required to create the upload files. The following table highlights the data elements required to complete the Project Baseline Template. Expenditure categories not covered by the Project Baseline Template have a devoted template as described in Appendix C.



Defined Term	Definition	Required/ Optional	List Values	Data Type	Max Length
Project Expenditure Category Group	Per guidance, this field represents the predefined project expenditure category	Required	"1-Public Health" "2-Negative Economic Impacts" "3-Services to Disproportionately Impacted Communities" "7- Administrative and Other"	Picklist (see permissible values in previous column)	n/a
Project Expenditure Category	Per guidance, this field represents and is aligned to the project expenditure category	Required	Refer to "Expenditure Categories covered by the Baseline Project Template" table below	Picklist (see permissible values in previous column)	n/a
Project Name	Name of the project.	Required	n/a	String	150
Project Identification Number (Assigned by recipient)	Identification number assigned to project by recipient.	Required	n/a	Alphanumeric	20
Status of Completion	Completion status of the project.	Required	"Not started", "Completed less than 50%", "Completed 50% or more", "Completed"	Picklist (see permissible values in previous column)	n/a
Adopted Budget	Amount of the adopted budget for the project	Required for Tier 1 recipients Optional for other Tier recipients	n/a	Currency	12,2
Total Obligations	Total obligations for the project.	Required If Status of Completion is "Not Started", enter "0"	n/a	Currency	12,2
Total Expenditures	Total expenditures for the project.	Required If Status of Completion is "Not Started", enter "0"	n/a	Currency	12,2
Does this project include a capital expenditure?	Does this project include a capital expenditure	Required	Yes No	Picklist (see permissible values in previous column)	n/a
If yes, what is the total expected capital expenditure?	If you answered "yes" to the previous question, enter the total dollar value of the expected capital expenditure	Optional	n/a	Currency	12,2



Defined Term	Definition	Required/Optional	List Values	Data Type	Max Length
Project Description	Brief description of the project.	Required	n/a	String	1,500
Program Income Earned	The amount of Federal program income earned.	Optional	n/a	Currency	12,2
Program Income Expended	The amount of program income that was used to cover eligible project costs.	Optional	n/a	Currency	12,2

Expenditure Categories covered by the Baseline Project Template

1.1	COVID-19 Vaccination
1.2	COVID-19 Testing
1.3	COVID-19 Contact Tracing
1.4	Prevention in Congregate Settings (Nursing Homes, Prisons/Jails, Dense Work Sites, Schools, etc.)
1.5	Personal Protective Equipment
1.6	Medical Expenses (including Alternative Care Facilities)
1.7	Capital Investments or Physical Plant Changes to Public Facilities that respond to the COVID-19 public health emergency
1.8	Other COVID-19 Public Health Expenses (including Communications, Enforcement, Isolation/Quarantine)
1.10	Mental Health Services
1.11	Substance Use Services
1.12	Other Public Health Services
2.6	Unemployment Benefits or Cash Assistance to Unemployed Workers
2.7	Job Training Assistance (e.g., Sectoral job-training, Subsidized Employment, Employment Supports or Incentives)
2.8	Contributions to UI Trust Funds
2.9	Small Business Economic Assistance (General)
2.10	Aid to nonprofit organizations
2.11	Aid to Tourism, Travel, or Hospitality
2.12	Aid to Other Impacted Industries
2.13	Other Economic Support
3.6	Healthy Childhood Environments: Child Care
3.7	Healthy Childhood Environments: Home Visiting
3.8	Healthy Childhood Environments: Services to Foster Youth or Families Involved in Child Welfare System
3.9.	Healthy Childhood Environments: Other
3.10	Housing Support: Affordable Housing
3.11	Housing Support: Services for Unhoused persons
3.12	Housing Support: Other Housing Assistance
3.13	Social Determinants of Health: Other
3.14	Social Determinants of Health: Community Health Workers or Benefits Navigators



Expenditure Categories covered by the Baseline Project Template	
3.15	Social Determinants of Health: Lead Remediation
3.16	Social Determinants of Health: Community Violence Interventions
6.1	Provision of Government Services
7.1	Administrative Expenses
7.2	Evaluation and data analysis
7.3	Transfers to Other Units of Government

j) Subrecipient Template

The downloadable templates provide all information required to create the upload files. The following table highlights the data elements required to complete the Subrecipient Template.

Defined Term	Definition	Required	List Values	Data Type	Max Length
Subrecipient DUNS	The DUNS unique identification number for the Subrecipient Organization. NOTE: Sub-recipients must provide one of the following numbers: -DUNS, or -TIN, or -UEI	Optional	n/a	Numeric	9
Subrecipient DUNS (+4)	A 4-character suffix that may be assigned by a business concern and appended to its DUNS.	Optional	n/a	String	4
Subrecipient TIN	The Subrecipient's Internal Revenue Service (IRS) Taxpayer Identification Number NOTE: Sub-recipients must provide one of the following numbers: -DUNS, or -TIN, or -UEI	Optional	n/a	Numeric	9
Subrecipient UEI	The Sub-recipient's Unique Entity Identifier (UEI) created in SAM.gov. NOTE: Sub-recipients must provide one of the following numbers: -DUNS, or -TIN, or -UEI	Optional	n/a	Numeric	12
Subrecipient Name	The name of the Subrecipient.	Required	n/a	String	80



Defined Term	Definition	Required	List Values	Data Type	Max Length
POC Email Address	The email address of the primary point-of-contact for the Subrecipient.	Optional	n/a	String	40
Address Line 1	First line of the Subrecipient's address.	Required	n/a	String	150
Address Line 2	Second line of the Subrecipient's address.	Optional	n/a	String	150
Address Line 3	Third line of the Subrecipient's address.	Optional	n/a	String	150
City Name	Name of the city in which the Subrecipient is located.	Required	n/a	String	40
State Code	United States Postal Service (USPS) two-letter abbreviation for the state or territory in which the Subrecipient is located.	Required	(AL, AK, AS, AZ, AR, CA, CO, CT, DE, DC, FM, FL, GA, GU, HI, ID, IL, IN, IA, KS, KY, LA, ME, MH, MD, MA, MI, MN, MS, MO, MT, NE, NV, NH, NJ, NM, NY, NC, ND, MP, OH, OK, OR, PW, PA, PR, RI, SC, SD, TN, TX, UT, VT, VI, VA, WA, WV, WI, WY)	String	2
Zip5	United States ZIP code (five digits) associated with the Subrecipient's address.	Required	n/a	Numeric	5
Zip4	Zip Plus4 (four digits) identifying where the predominant performance of the subaward will be accomplished.	Optional	n/a	Numeric	4
Subrecipient SAM.gov Registration	Confirmation that the Subrecipient is registered in SAM.gov	Required	Yes/No	Picklist (see permissible values in previous column)	n/a
In its preceding fiscal year, did recipient receive 80% or more of its annual gross revenue from federal funds?	Confirmation that the proportion of the Subrecipient's federal funding-to-total annual gross revenue for the preceding fiscal year is at least 80%	Optional	Yes/No	Picklist (see permissible values in previous column)	n/a
In the preceding fiscal year, did recipient receive \$25 million or	Confirmation that the Subrecipient's total annual gross revenue from federal funding across all programs for the	Optional	Yes/No	Picklist (see permissible values in previous	n/a



Defined Term	Definition	Required	List Values	Data Type	Max Length
more of its annual gross revenue from federal funds?	preceding fiscal year is greater than \$25 million.			column)	
Is the "total compensation" for the organization's five highest paid officers publicly listed or otherwise listed in SAM.gov?	Confirmation that qualifying Subrecipient's publicly identify their top five highest compensated executives or have it listed in their SAM.gov profile, if No please provide names and compensation for top 5 executives.	Optional	Yes/No	Picklist (see permissible values in previous column)	n/a
Executive Name (1)	The legal name belonging to one of the five highest paid executives, officers, or employees of the Subrecipient.	Required (If you answered "No" to question in cell Q5)	n/a	String	100
Total Compensation (1)	The Total Compensation, as defined in 2 CFR part 170 Appendix A, earned by the five highest paid executives, officers, or employees of the Subrecipient.	Required (If you answered "No" to question in cell Q5)	n/a	Currency	12,2
Executive Name (2)	The legal name belonging to one of the five highest paid executives, officers, or employees of the Subrecipient.	Required (If you answered "No" to question in cell Q5)	n/a	String	100
Total Compensation (2)	The Total Compensation, as defined in 2 CFR part 170 Appendix A, earned by the five highest paid executives, officers, or employees of the Subrecipient.	Required (If you answered "No" to question in cell Q5)	n/a	Currency	12,2
Executive Name (3)	The legal name belonging to one of the five highest paid executives, officers, or employees of the Subrecipient.	Required (If you answered "No" to question in cell Q5)	n/a	String	100
Total Compensation (3)	The Total Compensation, as defined in 2 CFR part 170 Appendix A, earned by the five highest paid executives, officers, or employees of the Subrecipient.	Required (If you answered "No" to question in cell Q5)	n/a	Currency	12,2
Executive Name (4)	The legal name belonging to one of the five highest paid executives, officers, or employees of the Subrecipient.	Required (If you answered "No" to question in cell Q5)	n/a	String	100
Total Compensation (4)	The Total Compensation, as defined in 2 CFR part 170 Appendix A, earned by the five highest paid executives, officers, or employees of the Subrecipient.	Required (If you answered "No" to question in cell Q5)	n/a	Currency	12,2
Executive Name (5)	The legal name belonging to one of the five highest paid executives, officers, or employees of the Subrecipient.	Required (If you answered "No" to question in	n/a	String	100



Defined Term	Definition	Required	List Values	Data Type	Max Length
Total Compensation (5)	The Total Compensation, as defined in 2 CFR part 170 Appendix A, earned by the five highest paid executives, officers, or employees of the Subrecipient.	Required (If you answered "No" to question in cell Q5)	n/a	Currency	12,2

k) Subaward Template

The downloadable templates provide all information required to create the upload files. The following table highlights the data elements required to complete the Subaward Template.

Defined Term	Definition	Required	List Values	Data Type	Max Length
Subrecipient DUNS	The DUNS unique identification number for the Subrecipient Organization.	Optional	n/a	Numeric	9
Recipient Project Id	Recipient Project ID associated with this Sub Award. This is your unique Project Identification Number.	Required	n/a	Numeric	20
Subaward No.	Recipient's internal account number for the grant, contract, transfer, or direct payment. This can be the account number, or any other unique identifying number assigned by the Recipient to the award. This number is strictly for the Recipient's recordkeeping.	Required	n/a	String	20
Subaward Type	The type of Subaward.	Required	"Contract: Purchase Order" "Contract: Delivery Order" "Contract: Blanket Purchase Agreement" "Contract: Definitive Contract" "Grant: Lump Sum Payment(s)" "Grant: Reimbursable" "Direct Payment" "Transfer: Lump Sum Payment(s)"	Picklist (see permissible values in previous column)	30



Defined Term	Definition	Required	List Values	Data Type	Max Length
			"Transfer: Reimbursable" "Loan - maturity prior to 12/31/26 with planned forgiveness" "Loan - maturity prior to 12/31/26 without planned forgiveness" "Loan - maturity past 12/31/26 with planned forgiveness" "Loan - maturity past 12/31/26 without planned forgiveness"		
Subaward Amount (Obligation)	Total amount of SLFRF funds obligated by the Recipient to a Subrecipient under a given Subaward.	Required	n/a	Currency	12,2
Subaward Award Date	The date the Recipient obligated funds to a Subrecipient.	Required	n/a	Date	8
Primary Sector	Select Primary Sector from picklist.	Required	Refer to Sectors Designated as Essential Critical Infrastructure Sectors table below	Picklist (see permissible values in previous column)	30
If Other	Submit Primary Sector if not on picklist.	Required (If previous question is "Other")	n/a	String	100
Period of Performance Start	The date on which efforts begin or the Subaward is otherwise effective.	Required	n/a	Date	8
Period of Performance End	The date on which all effort is completed or the Subaward is otherwise ended.	Required	n/a	Date	8
Place of Performance Address 1	First line of the address where the predominant performance of the Subaward will be accomplished.	Required	n/a	String	120



Defined Term	Definition	Required	List Values	Data Type	Max Length
Place of Performance Address 2	Second line of the address where the predominant performance of the Subaward will be accomplished.	Optional	n/a	String	120
Place of Performance Address 3	Third line of the address where the predominant performance of the Subaward will be accomplished.	Optional	n/a	String	120
Place of Performance City	The name of the city where the predominant performance of the Subaward will be accomplished.	Required	n/a	String	40
Place of Performance State Code	United States Postal Service (USPS) two-letter abbreviation for the state or territory indicating where the predominant performance of the Subaward will be accomplished.	Required	(AL, AK, AS, AZ, AR, CA, CO, CT, DE, DC, FM, FL, GA, GU, HI, ID, IL, IN, IA, KS, KY, LA, ME, MH, MD, MA, MI, MN, MS, MO, MT, NE, NV, NH, NJ, NM, NY, NC, ND, MP, OH, OK, OR, PW, PA, PR, RI, SC, SD, TN, TX, UT, VT, VI, VA, WA, WV, WI, WY)	String	2
Place of Performance Zip	United States ZIP code (five digits) identifying where the predominant performance of the subaward will be accomplished.	Required	n/a	Numeric	5
Place of Performance Zip4	United States ZIP code (five digits) appended to the ZIP code +4 (four digits) identifying where the predominant performance of the Subaward will be accomplished.	Optional	n/a	Numeric	4
Subaward Description	A description of the overall purpose and expected outputs and outcomes or results of the funded subaward, including significant deliverables and, if appropriate, associated units of measure. The purpose and outcomes or results should be stated in terms that allow an understanding that the subaward constitutes an eligible use of funds.	Required	n/a	String	750

Sectors Designated as Essential Critical Infrastructure Sectors
Any work performed by an employee of a State, local, or Tribal government;
Behavioral health work;



Sectors Designated as Essential Critical Infrastructure Sectors
Biomedical Research;
Dental care work;
Educational work, school nutrition work, and other work required to operate a school facility;
Election's work;
Emergency response;
Family or childcare;
Grocery stores, restaurants, food production, and food delivery
Health care;
Home- and community-based health care or assistance with activities of daily living;
Laundry work;
Maintenance work;
Medical testing and diagnostics;
Pharmacy;
Public health work;
Sanitation, disinfection, and cleaning work;
Social services work;
Solid waste or hazardous materials management, response, and cleanup work;
Transportation and warehousing;
Vital services to Tribes;
Work at hotel and commercial lodging facilities that are used for COVID-19 mitigation and containment;
Work in a mortuary;
Work in critical clinical research, development, and testing necessary for COVID-19 response.
Work requiring physical interaction with patients;
Other

I) Expenditures GT \$50,000 Template

The downloadable templates provide all information required to create the upload files. The following table highlights the data elements required to complete the Expenditures GT \$50,000 Template.

Defined Term	Definition	Required	List Values	Data Type	Max Length
Subaward Number	Subaward number that allows the Recipient to associate Expenditure records to Subaward records. Enter Subaward Number. Subaward Number is not required if Expenditure Category is "Administrative Cost".	Required	n/a	Numeric	20
Expenditure Start Date	Start date for the range of time when the expenditure(s) occurred.	Required	n/a	Date	8



Defined Term	Definition	Required	List Values	Data Type	Max Length
Expenditure End Date	End date for the range of time when the expenditure(s) occurred	Required	n/a	Date	8
Expenditure Amount	Total amount of SLFRF dollars on the Subaward.	Required	n/a	Currency	12,2

m) Aggregate Expenditures LT \$50,000 Template

The downloadable templates provide all information required to create the upload files. The following table highlights the data elements required to complete the Aggregate Expenditures LT \$50,000 Template.

Defined Term	Definition	Required	List Values	Data Type	Max Length
Recipient Project Id	Recipient Project ID that allows the Recipient to associate Expenditure records to Project records.	Required	n/a	Numeric	20
Subaward Type Aggregates SLFRF	The Subaward Type that had obligation or expenditure/payment activity during the reporting period.	Required	"Aggregate of Contracts Awarded " "Aggregate of Grants Awarded " "Aggregate of Loans Issued " "Aggregate of Transfers " "Aggregate of Direct Payments "	Picklist (see permissible values in previous column)	100
Total Period Expenditure Amount (Aggregates)	Sum of Expenditures or Payments during the most recent period for this Sub-Award Type (Aggregates).	Required	n/a	Currency	12,2
Total Period Obligation Amount (Aggregates)	Sum of sub-award amounts/obligations during the most recent period for this Sub-Award Type (Aggregates).	Required	n/a	Currency	12,2

n) Payments to Individuals LT \$50,000 Template

The downloadable templates provide all information required to create the upload files. The following table highlights the data elements required to complete the Payments to Individuals LT \$50,000 Template.



Defined Term	Definition	Required	List Values	Data Type	Max Length
Recipient Project Id	Recipient Project ID that allows the Recipient to associate Expenditure records to Project records.	Required	n/a	Numeric	20
Total Period Expenditure Amount (Aggregates)	Sum of Expenditures or Payments during the most recent period for this Sub-Award Type (Aggregates).	Required	n/a	Currency	12,2
Total Period Obligation Amount (Aggregates)	Sum of sub-award amounts/obligations during the most recent period for this Sub-Award Type (Aggregates).	Required	n/a	Currency	12,2



Appendix C – Expenditure Categories and Template Mapping

The Expenditure Categories (EC) listed below must be used to categorize each project as noted in the [Reporting Guidance](#). The term “Expenditure Category” refers to the detailed level (e.g., 1.1 COVID-10 Vaccination). When referred to at the summary level (e.g., EC 1) it includes all Expenditure Categories within that summary level.

For the table below, the following legend applies.

* Denotes areas where recipients should note if the project includes a capital expenditure

The Programmatic Data column indicates which Expenditure Categories have associated programmatic data, in addition to the project standard information. More information on each EC’s programmatic data is contained in Appendix C and in the [Reporting Guidance](#).

Category		Programmatic Data?	Bulk Upload Template
1 Expenditure Category: Public Health			
1.1	COVID-19 Vaccination *	No	Project Template Base
1.2	COVID-19 Testing *	No	Project Template Base
1.3	COVID-19 Contact Tracing*	No	Project Template Base
1.4	Prevention in Congregate Settings (Nursing Homes, Prisons/Jails, Dense Work Sites, Schools, etc.) *	No	Project Template Base
1.5	Personal Protective Equipment*	No	Project Template Base
1.6	Medical Expenses (including Alternative Care Facilities)*	No	Project Template Base
1.7	Capital Investments or Physical Plant Changes to Public Facilities that respond to the COVID-19 public health emergency*	No	Project Template Base
1.8	Other COVID-19 Public Health Expenses (including Communications, Enforcement, Isolation/Quarantine)*	No	Project Template Base
1.9	Payroll Costs for Public Health, Safety, and Other Public Sector Staff Responding to COVID-19*	Yes	Project Template EC 1.9
1.10	Mental Health Services*	No	Project Template Base
1.11	Substance Use Services*	No	Project Template Base
1.12	Other Public Health Services*	No	Project Template Base
2 Expenditure Category: Negative Economic Impacts			
2.1	Household Assistance: Food Programs *	Yes	Project Template EC 2.1 – 2.5
2.2	Household Assistance: Rent, Mortgage, and Utility Aid *	Yes	Project Template EC 2.1 – 2.5
2.3	Household Assistance: Cash Transfers *	Yes	Project Template EC 2.1 – 2.5
2.4	Household Assistance: Internet Access Programs *	Yes	Project Template EC 2.1 – 2.5
2.5	Household Assistance: Eviction Prevention *	Yes	Project Template EC 2.1 – 2.5
2.6	Unemployment Benefits or Cash	No	Project Template Base



Category		Programmatic Data?	Bulk Upload Template
	Assistance to Unemployed Workers *		
2.7	Job Training Assistance (e.g., Sectoral job-training, Subsidized Employment, Employment Supports or Incentives) *	No	Project Template Base
2.8	Contributions to UI Trust Funds	No	Project Template Base
2.9	Small Business Economic Assistance (General) *	No	Project Template Base
2.10	Aid to nonprofit organizations *	No	Project Template Base
2.11	Aid to Tourism, Travel, or Hospitality*	No	Project Template Base
2.12	Aid to Other Impacted Industries*	No	Project Template Base
2.13	Other Economic Support *	No	Project Template Base
2.14	Rehiring Public Sector Staff*	Yes	Project Template EC 2.14
3 Expenditure Category: Services to Disproportionately Impacted Communities			
3.1	Education Assistance: Early Learning *	Yes	Project Template EC 3.1 – 3.5
3.2	Education Assistance: Aid to High-Poverty Districts *	Yes	Project Template EC 3.1 – 3.5
3.3	Education Assistance: Academic Services *	Yes	Project Template EC 3.1 – 3.5
3.4	Education Assistance: Social, Emotional, and Mental Health Services *	Yes	Project Template EC 3.1 – 3.5
3.5	Education Assistance: Other *	Yes	Project Template EC 3.1 – 3.5
3.6	Healthy Childhood Environments: Child Care *	No	Project Template Base
3.7	Healthy Childhood Environments: Home Visiting *	No	Project Template Base
3.8	Healthy Childhood Environments: Services to Foster Youth or Families Involved in Child Welfare System *	No	Project Template Base
3.9.	Healthy Childhood Environments: Other *	No	Project Template Base
3.10	Housing Support: Affordable Housing *	No	Project Template Base
3.11	Housing Support: Services for Unhoused persons *	No	Project Template Base
3.12	Housing Support: Other Housing Assistance *	No	Project Template Base
3.13	Social Determinants of Health: Other *	No	Project Template Base
3.14	Social Determinants of Health: Community Health Workers or Benefits Navigators *	No	Project Template Base
3.15	Social Determinants of Health: Lead Remediation *	No	Project Template Base
3.16	Social Determinants of Health: Community Violence Interventions *	No	Project Template Base
4 Expenditure Category: Premium Pay			
4.1	Public Sector Employees	Yes	Project Template EC 4.1 – 4.2
4.2	Private Sector: Grants to other employers	Yes	Project Template EC 4.1 – 4.2
5 Expenditure Category: Infrastructure			
5.1	Clean Water: Centralized wastewater	Yes	Project Template EC 5



Category		Programmatic Data?	Bulk Upload Template
	treatment		
5.2	Clean Water: Centralized wastewater collection and conveyance	Yes	Project Template EC 5
5.3	Clean Water: Decentralized wastewater	Yes	Project Template EC 5
5.4	Clean Water: Combined sewer overflows	Yes	Project Template EC 5
5.5	Clean Water: Other sewer infrastructure	Yes	Project Template EC 5
5.6	Clean Water: Stormwater	Yes	Project Template EC 5
5.7	Clean Water: Energy conservation	Yes	Project Template EC 5
5.8	Clean Water: Water conservation	Yes	Project Template EC 5
5.9	Clean Water: Nonpoint source	Yes	Project Template EC 5
5.10	Drinking water: Treatment	Yes	Project Template EC 5
5.11	Drinking water: Transmission & distribution	Yes	Project Template EC 5
5.12	Drinking water: Transmission & distribution: lead remediation	Yes	Project Template EC 5
5.13	Drinking water: Source	Yes	Project Template EC 5
5.14	Drinking water: Storage	Yes	Project Template EC 5
5.15	Drinking water: Other water infrastructure	Yes	Project Template EC 5
5.16	Broadband: "Last Mile" projects	Yes	Project Template EC 5
5.17	Broadband: Other projects	Yes	Project Template EC 5
6 Expenditure Category: Revenue Replacement			
6.1	Provision of Government Services	N/A	Revenue Replacement Module
7 Administrative and Other			
7.1	Administrative Expenses	No	Project Template Base
7.2	Evaluation and data analysis	No	Project Template Base
7.3	Transfers to Other Units of Government	No	Project Template Base



Appendix D – SLFRF Expenditure Category Programmatic Data and Other Information

The downloadable templates contain information required to create the upload files to include required/optional fields, help text, and permissible data types.

The following table highlights the standard data elements required for the Project Bulk Upload for Base Projects.

Project Bulk Upload for Base Projects Table

Defined Term	Definition	Required or Optional	List Values	Data Type	Max Length
Project Expenditure Category Group	Expenditure category	Required	Select from Project EC Group Pick List [1,2,3, and 7]	Pick List	n/a
Project Expenditure Category	Sub-Category	Required	Select from Project EC Pick List [1,2,3, and 7]	Pick List	n/a
Project Name	Official name of the project	Required	n/a	String	150
Recipient Project ID	Identification number assigned to project by recipient	Required	n/a	Alpha Numeric	20
Status of Completion	Completion status of the project	Required	"Not started", "Completed less than 50%", "Completed 50% or more", "Completed"	Pick List	n/a
Adopted Budget	Amount of the adopted budget for the project	Required for Tier 1 recipients Optional for other Tier recipients	n/a	Currency	12,2
Total Obligations	The total dollar value of obligations for this project	Required If Status of Completion is "Not Started", enter "0"	n/a	Currency	12,2
Total Expenditures	The total dollar value of expenditures for this project	Required If Status of Completion is "Not Started", enter "0"	n/a	Currency	12,2
Does this project include a capital expenditure?	Does this project include a capital expenditure	Required	Yes No	Picklist (see permissible values in previous column)	n/a



Defined Term	Definition	Required or Optional	List Values	Data Type	Max Length
If yes, what is the total expected capital expenditure?	If you answered "yes" to the previous question, enter the total dollar value of the expected capital expenditure	Optional	n/a	Currency	12,2
Project Description	Description of Project	Required	n/a	String	1,500
Program Income Earned	The amount of Federal program income earned.	Optional	n/a	Currency	12,2
Program Income Expended	The amount of program income that was used to cover eligible project costs.	Optional	n/a	Currency	12,2

EC 1.1 – 1.8

There is no additional programmatic data required for the following EC:

- EC 1.1 COVID-19 Vaccination
- EC 1.2 COVID-19 Testing
- EC 1.3 Contact Tracing
- EC 1.4 Prevention in Congregate Settings (Nursing Homes, Prisons/Jails, Dense Work Sites, Schools, etc.)
- EC 1.5 Personal Protective Equipment
- EC 1.6 Medical Expenses (including Alternative Care Facilities)
- EC 1.7 Capital Investments of Physical Plant Changes to Public Facilities that respond to the COVID-19 public health emergency
- EC 1.8. Other COVID-19 Public Health Expenses (including Communications, Enforcement, Isolation/Quarantine)

EC 1.9 (Payroll Costs for Public Health, Safety, and Other Public Sector Staff Resp)

There are additional programmatic data required for EC 1.9. that can be provided via bulk upload file or manual entry. The Project Template EC 1.9 contains fields required to create the upload files and includes required/optional fields, help text, and permissible data types for EC 1.9 Public Health: Payroll Costs for Public Health, Safety, and Other Public Sector Staff Responding to COVID-19.

In addition to the project base information noted in the Project Bulk Upload for Base Projects table above, additional data to provide is as follows:

Defined Term	Definition	Required or Optional	List Values	Data Type	Max Length
Payroll for Public Health and	Number of government FTE	Required	n/a	Numeric	6



Defined Term	Definition	Required or Optional	List Values	Data Type	Max Length
Safety Employees	responding to COVID-19 supported under this authority				

EC 1.10 – 1.12

There is no additional programmatic data required for the following EC:

- EC 1.10 Mental Health Services.
- EC 1.11 (Substance Use Services)
- EC 1.12 (Other Public Health Services)

EC 2.1–2.5 (Household Assistance)

There are additional programmatic data required for EC 2.1 – 2.5 that can be provided via bulk upload file or manual entry. Project Template EC 2.1 – 2.5 contains fields required to create the upload files and include required/optional fields, help text, and permissible data types for the following categories under EC 2 Negative Economic Impacts:

- 2.1-Household Assistance: Food Programs
- 2.2-Household Assistance: Rent, Mortgage, and Utility Aid
- 2.3-Household Assistance: Cash Transfers
- 2.4-Household Assistance: Internet Access Programs
- 2.5-Household Assistance: Eviction Prevention

In addition to the project base information noted in the Project Bulk Upload for Base Projects table above, additional data to provide is as follows:

Defined Term	Definition	Required or Optional	List Values	Data Type	Max Length
Structure and objectives of assistance program(s)	Brief description of structure and objectives of assistance program(s) (e.g., nutrition assistance for low-income households)	Required	n/a	String	500
Number of households served	Number of households served (by program if recipient establishes multiple separate household assistance programs)	Required	n/a	Numeric	6
Brief description of recipient's approach	Brief description of recipient's approach to ensuring that aid to households responds to a	Required	n/a	String	500



Defined Term	Definition	Required or Optional	List Values	Data Type	Max Length
	negative economic impact of Covid-19				

EC 2.6 – 2.9

There is no additional programmatic data required for the following EC:

- EC 2.6 Unemployment Benefits or Cash Assistance to Unemployed Workers.
- EC 2.7 Job Training Assistance (e.g., Sectoral job-training, Subsidized Employment, Employment Supports or Incentives).
- EC 2.8 Contributions to UI Trust Funds.
- EC 2.10 Aid to Nonprofit Organizations

EC 2.14 (Rehiring Public Sector Staff)

There is additional programmatic data required for EC 2.14 that can be provided via bulk upload file or manual entry. Project Template EC 2.14 contains fields required to create the upload files and includes required/optional fields, help text, and permissible data types for the Expenditure Category EC 2 Negative Impacts: 2.14 Rehiring Public Sector Staff.

In addition to the project base information noted in the Project Bulk Upload for Base Projects table above, additional data to provide is as follows:

Defined Term	Definition	Required or Optional	List Values	Data Type	Max Length
Number of FTEs rehired by governments under this authority	Number of FTEs rehired by governments under this authority	Required	n/a	Numeric	6

EC 3.1–3.5 (Services to Disproportionately Impacted Communities)

There is additional programmatic data required for EC 3.1 – 3.5 that can be provided via bulk upload file or manual entry. Project Template EC 3.1 – 3.5 contains fields required to create the upload files and includes required/optional fields, help text, and permissible data types for the following categories under EC 3 Services to Disproportionately Impacted Communities:

- 3.1-Education Assistance: Early Learning
- 3.2-Education Assistance: Aid to High-Poverty Districts
- 3.3-Education Assistance: Academic Services
- 3.4-Education Assistance: Social, Emotional, and Mental Health Services
- 3.5-Education Assistance: Other

In addition to the project base information noted in the Project Bulk Upload for Base Projects table above, additional data to provide is as follows:



Defined Term	Definition	Required or Optional	List Values	Data Type	Max Length
NCES School ID or NCES District ID	The National Center for Education Statistics (“NCES”) School ID or NCES District ID. Separate IDs with comma’s for multiple entries.	Required	n/a	Numeric	750

Policy Information

When providing the National Center for Education Statistics (“NCES”) School ID or NCES District ID, please list the School District if all schools within the school district received some funds. If not all schools within the school district received funds, please list the School ID of the schools that received funds. These can allow evaluators to link data from the NCES to look at school-level demographics and, eventually, student performance. For more information on NCES identification numbers see <https://nces.ed.gov/ccd/districtsearch/> (districts) and <https://nces.ed.gov/ccd/schoolsearch/> (schools).

EC 3.6 – 3.16

There is no additional programmatic data required for the following ECs:

- EC 3.6 Healthy Childhood Environments: Child Care.
- EC 3.7 Healthy Childhood Environments: Home Visiting
- EC 3.8 Healthy Childhood Environments: Services to Foster Youth or Families Involved in Child Welfare System
- EC 3.9 Healthy Childhood Environments: Other
- programmatic data required for EC 3.10 Housing Support: Affordable Housing
- EC 3.11 Housing Support: Services for Unhoused Persons
- EC 3.12 Housing Support: Other Housing Assistance
- EC 3.13 Social Determinants of Health: Other
- EC 3.14 Social Determinants of Health: Community Health Workers or Benefits Navigators
- EC 3.15 Social Determinants of Health: Lead Remediation
- EC 3.16 Community Violence Interventions.

EC 4.1–4.2 (Premium Pay)

There is additional programmatic data required for EC 4.1 – 4.2 that can be provided via bulk upload file or manual entry. Project Template EC 4.1 – 4.2 contains fields required to create the upload files and includes required/optional fields, help text, and permissible data types for the categories under EC 4 Premium Pay:

- 4.1-Public Sector Employees
- 4.2-Private Sector: Grants to other employers

In addition to the project base information noted in the Project Bulk Upload for Base Projects table above, additional data to provide is as follows:



Defined Term	Definition	Required or Optional	List Values	Data Type	Max Length
Sectors designated as essential critical infrastructure sectors	List of sectors designated as critical to the health and well-being of residents by the chief executive of the jurisdiction, if beyond those included in the Interim Final Rule	Required	n/a	String	1500
Number of workers to be served	Number of workers to be served	Required	n/a	Numeric	7
Premium Pay Narrative	For groups of workers that do not meet one of the two criteria below, submit a written justification to Treasury describing how the premium pay or grant is responsive to workers performing essential work during the public health emergency: Eligible worker receiving premium pay is earning (with the premium included) below 150 percent of their residing state or county's average annual wage for all occupations, as defined by the Bureau of Labor Statistics Occupational Employment and Wage Statistics or (2) eligible worker receiving premium pay is not exempt from the Fair Labor Standards Act overtime provisions. Please see User Guide for additional detail on information to include and not to include in the description.	Required	n/a	String	3000



In addition, please see Section [IV.d.2 Step 5](#) and [Appendix E](#) for additional information needed on sub-awards supporting projects in these Expenditure Categories.

- **Note-** Recipients that are either creating or supporting a Premium Pay program may only provide premium pay to eligible workers, e.g., workers needed to maintain continuity of operations of essential critical infrastructure sectors (see sector list for additional details), for essential work, e.g., work that is not performed while teleworking from a residence; and involves either: regular, in-person interactions with patients, the public, or coworkers of the individual that is performing the work; or
- regular physical handling of items that were handled by, or are to be handled by, patients, the public, or coworkers of the individual that is performing the work.

EC 5.1–5.17 (Infrastructure)

There is additional programmatic data required for EC 5.1 – 5.17 that can be provided via bulk upload file or manual entry. There is also additional programmatic data required for all projects that can only be entered via manual entry. Project Template EC 5 contains fields required to create the upload files and includes required/optional fields, help text, and permissible data types for all subcategories under Expenditure Category EC 5 Infrastructure:

- 5.1-Clean Water: Centralized wastewater treatment
- 5.2-Clean Water: Centralized wastewater collection and conveyance
- 5.3-Clean Water: Decentralized wastewater
- 5.4-Clean Water: Combined sewer overflows
- 5.5-Clean Water: Other sewer infrastructure
- 5.6-Clean Water: Stormwater
- 5.7-Clean Water: Energy conservation
- 5.8-Clean Water: Water conservation
- 5.9-Clean Water: Nonpoint source
- 5.10-Drinking water: Treatment
- 5.11-Drinking water: Transmission & distribution
- 5.12-Drinking water: Transmission & distribution: lead remediation
- 5.13-Drinking water: Source
- 5.14-Drinking water: Storage
- 5.15-Drinking water: Other water infrastructure
- 5.16-Broadband: “Last Mile” projects
- 5.17-Broadband: Other projects

In addition to the project base information noted in the Project Bulk Upload for Base Projects table above, additional data to provide is as follows:

Defined Term	Definition	Required or Optional	List Values	Data Type	Max Length
Projected/actual construction start date	Projected/actual construction start date	Optional REQUIRED if the project has started.	n/a	Date	10



Defined Term	Definition	Required or Optional	List Values	Data Type	Max Length
		NOT REQUIRED if you selected "Not Started" for the "Status to Completion" question.			
Projected/actual initiation of operations date	Projected/actual initiation of operations date	Optional REQUIRED if the project has started. NOT REQUIRED if you selected "Not Started" for the "Status to Completion" question.	n/a	Date	10
Location Type	Location type:(for broadband, geospatial location data)	REQUIRED if the project has started. NOT REQUIRED if you selected "Not Started" for the "Status to Completion" question.	-Latitude/ longitude (WGS84 or NAD83 geographic coordinate system) -Address -Address Range -Road Segment	Picklist	n/a

After the bulk upload of EC 5 infrastructure project information, manual entry of additional programmatic data will be required in Treasury’s Portal.

a) Additional manual entry for all infrastructure projects

1. Location
2. For projects over \$10 million in expected total cost
 - i. Complete Davis-Bacon certification or provide the following:
 - Number of employees of contractors and sub-contractors working on the project (number)
 - Number of employees on the project hired directly (number)
 - Number of employees on the project hired through a third party (number)
 - Wages and benefits of workers on the project by classification (rich text field)
 - Are any of the wages at rates less than those prevailing? (Y/N)
 - ii. Complete certification for labor agreements or provide the following:
 - How will the recipient ensure the project has ready access to a sufficient supply of appropriately skilled and unskilled labor to ensure high-quality construction throughout the life of the project, including a description of any required professional certifications and/or in-house training? (text box)



- How will the recipient minimize risks of labor disputes and disruptions that would jeopardize timeliness and cost-effectiveness of the project? (text box)
 - How will the recipient provide a safe and healthy workplace that avoids delays and costs associated with workplace illnesses, injuries, and fatalities, including descriptions of safety training, certification, and/or licensure requirements for all relevant workers (e.g., OSHA 10, OSHA 30);”? (text box)
 - Will workers on the project receive wages and benefits that will secure an appropriately skilled workforce in the context of the local and regional labor market? (Y/N)
 - Does the project have a completed project labor agreement? (Y/N)
- iii. Respond to the question, Does the project prioritize local hires? (Y/N)
- iv. Respond to the question, Does the project have a Community Benefit Agreement, with a description of any such agreement? (Y/N)

b) Additional manual entry for Projects in the Water and Sewer Infrastructure Expenditure Categories (5.1 – 5.15):

1. National Pollutant Discharge Elimination System (NPDES) Permit Number (if applicable; for projects aligned with the Clean Water State Revolving Fund)
2. Public Water System (PWS) ID number (if applicable; for projects aligned with the Drinking Water State Revolving Fund)

Note- Please provide the NPDES Permit Number or Public Water System (PWS) ID number for projects on systems with such permit/ID numbers. Otherwise, please leave this field blank. Providing this information allows Treasury to connect your reporting data to existing information about the systems.

c) Additional manual entry for Broadband Projects Expenditure Categories (5.16 – 5.17):

1. Project is designed to, upon completion, reliably meet or exceed symmetrical 100 Mbps download and upload speeds.
2. If the project is not designed to reliably meet or exceed symmetrical 100 Mbps download and upload speeds, explain why not,
3. Confirm that the project is designed to, upon completion, meet or exceed symmetrical 100 Mbps download speed and between at least 20 Mbps and 100 Mbps upload speed, and be scalable to a minimum of 100 Mbps download speed and 100 Mbps upload speed.

EC 6.1 (Provision of Government Services)

There is no additional programmatic data required for EC 6.1.

In addition, note that obligations and expenditures reported under EC 6.1 Revenue Replacement do not need to have subrecipients, subawards, or expenditures separately reported. If the only project created is for EC 6.1 Revenue Replacement, the following sections will be greyed out: Subrecipient module, Subaward Module, Expenditure Module



EC 7.1 – 7.3

There is no additional programmatic data required for the following ECs:

- EC 7.1 Administrative Expenses
- EC 7.2 Evaluation and Data Analysis.
- EC 7.3 Transfers to Other Units of Government.

EC 7.4 (Transfers to Non-entitlement Units (States and Territories only))

Do not enter projects under EC 7.4 (Transfers to Non-entitlement Units (States and Territories only)). This information will be collected as part of NEU and Non-UGLG information. Please reference NEU User Guide.



Appendix E – List of Sectors

When entering information for project subawards, selection of a Primary Sector is required for subawards tied to projects in Expenditure Categories:

- 4.1 Premium Pay: Public Sector Employees; and
- 4.2 Premium Pay: Private Sector: Grants to other employers.

A primary sector is defined as the sector targeted by the work performed under the sub-award. It is not required for other expenditure categories. The table below lists primary sectors available in the system for selection. If the primary sector is not listed, select “Other” and clarify in the manual entry box.

Sectors Designated as Essential Critical Infrastructure Sectors
Any work performed by an employee of a State, local, or Tribal government;
Behavioral health work;
Biomedical Research;
Dental care work;
Educational work, school nutrition work, and other work required to operate a school facility;
Elections work;
Emergency response;
Family or childcare;
Grocery stores, restaurants, food production, and food delivery
Health care;
Home- and community-based health care or assistance with activities of daily living;
Laundry work;
Maintenance work;
Medical testing and diagnostics;
Pharmacy;
Public health work;
Sanitation, disinfection, and cleaning work;
Social services work;
Solid waste or hazardous materials management, response, and cleanup work;
Transportation and warehousing;
Vital services to Tribes;
Work at hotel and commercial lodging facilities that are used for COVID-19 mitigation and containment;
Work in a mortuary;
Work in critical clinical research, development, and testing necessary for COVID-19 response.
Work requiring physical interaction with patients;
Other



Appendix F – Frequently Asked Questions

These questions are aligned to section 9 of the main FAQs and included in Section IV of the [User Guide: Treasury’s Portal for Recipient Reporting](#). However, please note that the list of FAQs has been reordered.

1.1. What records must be kept by governments receiving funds?

Financial records and supporting documents related to the award must be retained for a period of five years after all funds have been expended or returned to Treasury, whichever is later. This includes those which demonstrate the award funds were used for eligible purposes in accordance with the ARPA, Treasury’s regulations implementing those sections, and Treasury’s guidance on eligible uses of funds.

1.2. What reporting will be required, and when will the first report be due?⁷

Recipients will be required to submit an interim report, project and expenditure reports, and annual Recovery Plan Performance Reports as specified below, regarding their utilization of Coronavirus State and Local Fiscal Recovery Funds.

Interim reports: States (defined to include the District of Columbia), territories, metropolitan cities, counties, and Tribal governments will be required to submit one interim report. The interim report will include a recipient’s expenditures by category at the summary level and for states, information related to distributions to non-entitlement units of local government must also be included in the interim report. The interim report covered activity from the date of award to July 31, 2021 and were due to Treasury by August 31, 2021 or 60 days after receiving funding if funding was received by October 15, 2021. Non-entitlement units of local government were not required to submit an interim report.

Project and Expenditure reports: State (defined to include the District of Columbia), territorial, metropolitan city, county, and Tribal governments will be required to submit project and expenditure reports. This report will include financial data, information on contracts and subawards over \$50,000, types of projects funded, and other information regarding a recipient’s utilization of award funds.

Reports will be required quarterly for the following recipients:

- States and territories
- Metropolitan cities and counties with population over 250,000
- Metropolitan cities and counties with population less than 250,000 that received an award of more than \$10 million
- Tribal governments that received an award of more than \$30 million.

The initial project and expenditure report for quarterly recipients will be due January 31, 2022 and will cover the period of March 3, 2021 to December 31, 2021. The subsequent quarterly reports will cover one calendar quarter and must be submitted to Treasury within 30 days after the end of each calendar quarter.

Reports will be required annually for the following recipients:

- Metropolitan cities and counties with population less than 250,000 that received an award less than \$10 million,

⁷ This question was updated on November 15, 2021



- Tribal governments that received an award less than \$30 million
- Non-entitlement units of government

The initial project and expenditure report for annual filers will be due April 30, 2022 and will cover the period of March 3, 2021 to March 31, 2022. The subsequent annual reports must be submitted to Treasury by April 30 each year.

The reports will include the same general data as those submitted by recipients of the Coronavirus Relief Fund, with some modifications to expenditure categories and the addition of data elements related to specific eligible uses.

Recovery Plan Performance Reports: States (defined to include the District of Columbia), territories, metropolitan cities, and counties with a population that exceeds 250,000 residents will also be required to submit an annual Recovery Plan Performance Report to Treasury. This report will include descriptions of the projects funded and information on the performance indicators and objectives of each award, helping local residents understand how their governments are using the substantial resources provided by Coronavirus State and Local Fiscal Recovery Funds program. The initial Recovery Plan Performance Report will cover activity from date of award to July 31, 2021 was due to Treasury by August 31, 2021 or 60 days after receiving funding. Thereafter, the Recovery Plan Performance Reports will cover a 12-month period and recipients will be required to submit the report to Treasury within 30 days after the end of the 12-month period. The second Recovery Plan Performance Report will cover the period from July 1, 2021 to June 30, 2022 and must be submitted to Treasury by July 31, 2022. Each annual Recovery Plan Performance Report must be posted on the public-facing website of the recipient. Local governments with fewer than 250,000 residents, Tribal governments, and non-entitlement units of local government are not required to develop a Recovery Plan Performance Report.

Please see the [Guidance on Recipient Compliance and Reporting Responsibilities](#) for more information.

1.3. What provisions of the Uniform Guidance for grants apply to these funds? Will the Single Audit requirements apply?

Most of the provisions of the Uniform Guidance (2 CFR Part 200) apply to this program, including the Cost Principles and Single Audit Act requirements. Recipients should refer to the Assistance Listing for detail on the specific provisions of the Uniform Guidance that do not apply to this program. The Assistance Listing will be available on beta.SAM.gov.

1.4. Once a recipient has identified a reduction in revenue, how will Treasury track use of funds for the provision of government services?

The ARPA establishes four categories of eligible uses and further restrictions on the use of funds to ensure that Fiscal Recovery Funds are used within the four eligible use categories. The Interim Final Rule implements these restrictions, including the scope of the eligible use categories and further restrictions on tax cuts and deposits into pensions.



Consistent with the broad latitude provided to recipients to use funds for government services to the extent of the reduction in revenue, recipients will be required to submit a description of services provided. These services can include a broad range of services but may not be used directly for pension deposits, contributions to reserve funds, or debt service. Recipients may use sources of funding other than Fiscal Recovery Funds to make deposits to pension funds, contribute to reserve funds, and pay debt service, including during the period of performance for the Fiscal Recovery Fund award.

For recipients using Fiscal Recovery Funds to provide government services to the extent of reduction in revenue, the description of government services reported to Treasury may be narrative or in another form, and recipients are encouraged to report based on their existing budget processes and to minimize administrative burden. For example, a recipient with \$100 in revenue replacement funds available could indicate that \$50 were used for personnel costs and \$50 were used for pay-go building of sidewalk infrastructure.

In addition to describing the government services provided to the extent of reduction in revenue, all recipients will also be required to indicate that Fiscal Recovery Funds are not used directly to make a deposit in a pension fund. Further, recipients subject to the tax offset provision will be required to provide information necessary to implement this provision. Treasury does not anticipate requiring other types of reporting or recordkeeping on spending in pensions, debt service, or contributions to reserve funds.

These requirements are further detailed in the guidance on reporting requirements for the Fiscal Recovery Funds available [here](#).

1.5. What is the Assistance Listing and Catalog of Federal Domestic Assistance (CFDA) number for the program?

The [Assistance Listing](#) for the Coronavirus State and Local Fiscal Recovery Funds (CSLFRF) was published May 28, 2021 on SAM.gov. This includes the final Assistance Listing number for the program, 21.027.

The assistance listing includes helpful information including program purpose, statutory authority, eligibility requirements, and compliance requirements for recipients. The Assistance Listing number is the unique 5-digit code for each type of federal assistance, and can be used to search for program information, including funding opportunities, spending on usaspending.gov, or audit results through the Federal Audit Clearinghouse.

To expedite payments and meet statutory timelines, Treasury issued initial payments under an existing Assistance Listing number. If you have already received funds or captured the initial Assistance Listing number in your records, please update your systems and reporting to reflect the final Assistance Listing number 21.027. **Recipients must use the final Assistance Listing number for all financial accounting, audits, subawards, and associated program reporting requirements.**

To ensure public trust, Treasury expects all recipients to serve as strong stewards of these funds. This includes ensuring funds are used for intended purposes and recipients have in place effective financial management, internal controls, and reporting for transparency and accountability.



Please see Treasury's most recent Rule and the [Guidance on Recipient Compliance and Reporting Responsibilities](#) for more information.

1.6. If a recipient has received funding as of October 15, 2021 but has not incurred obligations or expenditures as of the end of the reporting period, what are the reporting requirements?

Interim Report: Recipients should submit a report showing no (\$0) obligations or expenditures have yet been incurred.

Recovery Plan: Recipients should submit a Recovery Plan, if applicable, describing the planned approach to the use of funds and planned projects.

Project and Expenditure Report: Recipients should submit a report showing no (\$0) obligations or expenditures have yet been incurred.

1.7. If a recipient has received funding as of October 15, 2021 but has not established projects as of the end of the reporting period, what are the reporting requirements?

No project level reporting is required in the Interim Report. Recipients should submit a Recovery Plan, if applicable, describing the planned approach to the use of funds and planned projects. Recipients should submit a Project and Expenditure Report describing the adopted budget, where applicable based on reporting tier, for any planned projects.

1.8. If a recipient has not received funding as of October 15, 2021 but received funding before the end of December 31, 2021, what are the reporting requirements?

Treasury recognizes that recipients will need sufficient time to gather the information and determine how to allocate funds in accordance with the Interim Final Rule. As such, recipients that have received funding between October 16, 2021 and December 31, 2021 are not required to submit an Interim Report.

However, recipients in this circumstance and are subject to quarterly reporting (those in Reporting Tiers 1, 2, or 3) will be required to submit a Project and Expenditure Report by January 31, 2022.

Recipients that are not subject to quarterly reporting will be required to submit a Project and Expenditure Report by April 30, 2022.

Recipients must submit a Recovery Plan (if applicable) within 60 days of receiving funding.

1.9. Does the \$10 million for metropolitan cities and counties with population less than 250,000 and the \$30 million (for tribes) threshold apply to funds received or the total allocation?

The reporting threshold is based on the total allocation expected under the SLFRF program, not the funds received by the recipient as of the time of reporting. Recipient reporting tiers will be displayed in the reporting portal. If you believe there is an error with



the reporting tier or application of the \$10 million (for metropolitan cities and counties with a population below 250,00 residents) or \$30 million (for tribes) thresholds, please email SLFRP@treasury.gov.

1.10. How should a recipient report funds if funds were received as multiple entity types (e.g., a county and an NEU, or county and a city)?

When receiving funds as multiple entity types, a recipient's reporting tier is determined by their total allocation across both recipient types and the highest tier for which they qualify. For example, if a recipient receives funding as an NEU and a county with population under \$250,000 and their total allocation across both entity types is over \$10M, the recipient should report as a county with population under 250,000 and over \$10M in total SLFRF funding. A recipient's reporting tier will be available for review in the Treasury's Portal. If you believe there is an error in consolidating or not consolidating your governmental entities for the purposes of reporting, please email SLFRP@treasury.gov.

1.11. The guidance covering submission of the Recovery Plan indicates that in addition to submitting a PDF version of the Recovery Plan recipients must also upload a project inventory file and input other programmatic data. Is this no longer required?

Treasury has delayed the collection of this information in Treasury's Portal in order to streamline reporting and lessen the reporting burden for recipients. Recipients are still required to upload a PDF version of their Recovery Plan by August 31, or 60 days after receiving funding. Recipients are encouraged to use the suggested template posted in the www.treasury.gov/SLFRPReporting website when preparing the Recovery Plan template. Some data from the Recovery Plan will be phased in to be submitted with the Project and Expenditure report.

1.12. How should recipients report if the population threshold changes during the four-year reporting period?

The population threshold is determined by Treasury at award date and will not change during the four-year reporting period. A recipient's reporting tier will be available for review in the reporting portal.

1.13. How do Recipients identify what Reporting Tier they are in?

A list of all SLFRF Recipients and their corresponding Reporting Tiers will be published on the Treasury website www.Treasury.gov/SLFRPReporting



In addition, Recipients will be able to find their Reporting Tier after logging into the Treasury Reporting Portal and selecting the Project and Expenditure Report record. The Reporting Tier will be displayed as part of the Recipient Profile.

1.14. Can records be edited or updated after submission? How do I report changes?

Interim Report: No changes will be allowed after the initial submission. Any updates will be captured when the first Project and Expenditure Report is submitted.

Project and Expenditure Report: Recipients will have an opportunity to reopen and provide edits to their submitted Project and Expenditure Reports anytime before the reporting deadline. Recipients will then be required to re-certify and submit the report again to properly reflect any edits made.

Recovery Plan: Similarly, Recipients will be allowed to reopen and provide an update of their submitted Recovery Plan report record anytime before the reporting deadline. They should also provide concurrent updates to the publicly posted version.

Recipients will then be required to re-certify and submit the report again to properly reflect any edits made.

1.15. How do recipients correct or edit pre-populated information or project information in Treasury's Portal?

In the event that information presented in Treasury's Portal requires correction, recipients should email SLFRP@treasury.gov and provide the necessary edits.

1.16. Is there any possibility of extension for the reporting deadlines for individual recipients?

Generally, No. The data submitted by recipients will be used internally for oversight purposes and to fulfill Treasury's transparency and legal obligations. Late submissions undermine the efficiency and timeliness of these processes. Recipient submissions after the reporting deadline will be considered as late, and recipients will be asked to provide a date by which the delayed reporting will be submitted so that Treasury can plan for incorporating the data. Treasury's own reporting will highlight those recipients whose reports were not received by the deadline. If there are any changes to the overall reporting deadlines, they will be communicated to the relevant impacted recipients.

1.17. Is there a penalty for not submitting timely reports?

A record of late reporting could lead to a finding of non-compliance, which could result in development of a corrective action plan, or other consequences.

1.18. What is meant by Date of Award?

The Date of Award is the day the recipient certifies the funding.

1.19. When are recipients subject to the quarterly reporting?



Recipients are required to provide quarterly reporting if they are in Reporting Tiers 1, 2, or 3 (see Section III.b). If applicable, reporting will start in the period funds were received and certified and will be required for all quarters thereafter.

1.20. How should interest or principal received from loans made with SLFRF Funds be treated?

The Project and Expenditure Report will include fields for reporting on program income at the Project level. Interest received on loans made with SLFRF funds should be tracked as program income (See 2 CFR § 200.1 *Program income*). Any program income that comes in before 2024 can be recycled by the recipients on eligible projects.

1.21. Will there be a way to capture and tally a total award amount that includes program income for ensuring all funds are spent or that any funds that need to be returned are?

Yes, since Program Income is being collected, Treasury will use the information reported to determine total allowable obligations and expenditures. That information will be made available in the Treasury portal for Recipients as part of future enhancements. Please note, interest earned on advances of federal funds are not considered program income and are not subject to these reporting requirements. (See 2 CFR § 200.1 *Program income*)

1.22. How should Recipients define expenditure for loans made with SLFRF funds?

For the purposes of reporting through the Treasury portal, expenditures for a loan should be identified as the value of the cash disbursement of the loan at the time of the disbursement. Separately, Recipients will have the opportunity to report, if applicable, on program income. As noted above, interest earned on advances of federal funds are not considered program income.

1.23. Are Recipients required to collect a DUNS number for each of their subrecipients?

The Dun & Bradstreet D-U-N-S number remains the official identifier for doing business with the U.S. Government and will be used for confirming SAM.gov registration. For subrecipients that do not yet have DUNS numbers, Recipients should encourage as many of their subrecipients to obtain a DUNS number as possible.

At the same time, Treasury recognizes that the Federal government is also transitioning away from using the DUNS number will only remain as the official identifier until April 4, 2022. In its place, the Federal government will use a Unique Entity Identifier (SAM) created in SAM.gov.

To accommodate Recipients during this shifting period, if there are subrecipients who do not yet have a DUNS number, and/or have challenges in obtaining one, the January 2022 Project and Expenditure Report form will accept for each subrecipient **one of the following three identifiers:**

- o Dun & Bradstreet D-U-N-S number
- o Taxpayer Identification Number (TIN)
- o Unique Entity Identifier (UEI)



After April 4, 2022 all Subrecipients will be expected to provide a Unique Entity Identifier.

1.24. Who are beneficiaries and are Recipients required to report for them?

A subrecipient is an entity that receives a subaward to carry out a project funded by Fiscal Recovery Funds on behalf of a recipient. Individuals or entities that are direct beneficiaries of a project funded by Fiscal Recovery Funds are not considered subrecipients. Households, communities, small businesses, nonprofits, and impacted industries are all potential beneficiaries of projects carried out with SLFRF funds.

The terms and conditions of Federal awards flow down to subawards to subrecipients, requiring subrecipients to comply with all requirements of recipients such as the treatment of eligible uses of funds, procurement, and reporting requirements. Beneficiaries are not subject to the requirements placed on subrecipients in the Uniform Guidance, including audit pursuant to the Single Audit Act and 2 CFR Part 200, Subpart F or subrecipient reporting requirements.

The distinction between a subrecipient and a beneficiary, therefore, is contingent upon the rationale for why a recipient is providing funds to the individual or entity. If the recipient is providing funds to the individual or entity for the purpose of carrying out a SLFRF program or project on behalf of the recipient, the individual or entity is acting as a subrecipient. Acting as a subrecipient, the individual or entity is subject to subrecipient monitoring and reporting requirements. Conversely, if the recipient is providing funds to the individual or entity for the purpose of directly benefitting the individual or entity as a result of experiencing a public health impact or negative economic impact, the individual or entity is acting as a beneficiary. Acting as a beneficiary, the individual or entity is not subject to subrecipient monitoring and reporting requirements.

While the definition above is used for Single Audit purposes, Treasury does require that the prime recipient report on both a beneficiary and a subrecipient in the Treasury reporting portal. Similar to reporting under the Coronavirus Relief Fund (CRF), information on both beneficiaries and subrecipients will be collected in a single form in the Project and Expenditure Report.

1.25. Do recipients who have projects under Expenditure Category 6.1 "Provision of Government Services" need to report on Subrecipients, Subawards, and Expenditures?

Recipients who have projects categorized under EC 6.1 "Provision of Government Services" are not required at this time to report on the subrecipients, subawards, and expenditures (for subawards or in aggregate) for those projects for the January reporting cycle.

1.26. How should a Recipient report the Subaward's "Place of Performance" address if the work was performed over a broad area and no specific address is available?

For the Subaward module, if a specific address is not available for a Subaward, you can enter the corresponding Subrecipient's address or the nearest headquarters of your jurisdiction in the required address fields.



1.27. Do jurisdictions need to have committed or dedicated funding received by the August 31, 2021 deadline or 60 days after receiving funding for the initial Recovery Plan?

No. Funding does not need to be committed or dedicated by the time the initial Recovery Plan is submitted. The Recovery Plan should include planned uses of funds and projects to the extent known at the time the Recovery Plan is submitted. Updates can be provided in subsequent Recovery Plans and project and expenditure reports.

1.28. Will the data recipients submit be made publicly available?

Yes, Treasury will make the data submitted by recipients publicly available. The content and timing of release is still under development. Treasury encourages recipients to make their data directly available through their own websites. States and territories are reminded that they need to post the Recovery Plan in their public website by the date the report is transmitted to Treasury.

1.29. What reporting is required if no SLFRF funding was used for the activities covered by the Required Performance Indicators noted in Part 2 C.2. of the Reporting Guidance related to the Recovery Plan?

A recipient only needs to report on mandatory performance indicators if funds were used for that purpose / Expenditure Category.

