

APPENDIX A

Consent Form (Pretest and Main Study)

Any text in angled brackets "< >" indicates part of the script that will change based on the participant or situation. The intended content (or content options) is indicated in the brackets.

What is the Research About?

Thank you for your interest in this research study. The research involves looking at a website for a cancer treatment and completing an online questionnaire. Viewing the website and completing the survey will take approximately **20 minutes**.

What Is the Purpose of This Study?

The purpose of the study is to learn more about websites for cancer treatments. You are one of about **<IF PRETEST: "180," IF MAIN STUDY: "1,030">** people in the United States who are being asked to take part in this survey.

Who Is Leading the Study?

RTI International, an independent nonprofit research organization, is conducting this study on behalf of the Department of Health and Human Services. RTI is working with Kantar to conduct this survey but is not affiliated with Kantar in any way.

Do I Have to Take Part in This Study?

Your participation in this study is completely voluntary, and you have the right to stop at any time or to refuse to answer any question. If you decide to participate and later change your mind, you will not be contacted again or asked for further information.

What Are the Possible Risks?

We do not expect that any of the survey questions will make you uncomfortable, but if they do, you can refuse to answer any question. There is also a potential risk of loss of confidentiality. Every effort will be made to protect your information, but this cannot be guaranteed.

Will I Benefit From Taking Part in This Study?

There are no direct benefits to you for participating in this study. However, you will be helping with an important research project.

Will I Receive Any Payment for Taking Part in This Study?

You will receive points equivalent to approximately \$10 for completing this survey.

Who Will See the Information I Give?

Many precautions have been taken to protect your information. All information collected in this survey will be kept confidential to the extent provided by law. You will never be identified by name. The information obtained from all of the surveys will be combined into a summary report so that details of individual questionnaires cannot be linked to a specific participant. When we analyze the results, your responses will be combined with responses from other people taking part in the study. You will not be identified in any published or presented materials. The information collected in this study may be used or shared for future research studies.

Will I Be Contacted in the Future About This Study?

You will not be contacted in the future about this research after your participation ends.

What If I Have Questions?

If you have questions about this survey, please contact your panel provider through your member website for assistance. You will need to mention the **Project # [SurveyNumber]**, and someone will direct your questions to the appropriate researchers at RTI. If you have questions about your rights as a participant, you can call RTI’s Office of Research Protection toll-free at 1-866-214-2043.

[Consent Screen 3]

If you have read the previous screens and agree to participate, please click the **Yes button. If not, click the **No** button.**

- Yes, I agree to participate. [CONTINUE AND RANDOMLY ASSIGN PARTICIPANT TO EXPERIMENTAL CONDITION]
- No, I do not agree to participate. [TERMINATE SURVEY]

Appendix B: Pretest and Main Study Screener

An agency may not conduct or sponsor, and a person is not required to respond to, a collection of information unless it displays a currently valid OMB control number.

OMB control#: XXX; Expiration: xxx

Thank you for your interest in this research study. The research involves looking at a website for a cancer treatment and completing an online questionnaire. First, we need to ask you a few screening questions to see if you are eligible to participate. Then, if you are eligible and agree to participate, you will be asked to view a website. After viewing the website, we will ask you to complete a survey. Viewing the website and completing the survey will take approximately 20 minutes.

[PROGRAMMER: NEXT SCREEN]

S1. What is your age? _____ [IF <18, TERMINATE]

[PROGRAMMER: NEXT SCREEN]

[SINGLE PUNCH]

S2. What is your occupation?

1. Healthcare provider (e.g., physician, nurse, physical therapist) [TERMINATE]
2. Pharmaceutical employee (e.g., pharma rep) [TERMINATE]
3. Market research employee or advertising employee [TERMINATE]
4. Employee of the Department of Health and Human Services [TERMINATE]
5. None of the above [CONTINUE]

[PROGRAMMER: NEXT SCREEN]

[SINGLE PUNCH]

S3. Have you ever been diagnosed with cancer by a doctor or other qualified health care provider?

1. Yes [CONTINUE TO S4s]
2. No [CONTINUE TO S4c]

[PROGRAMMER: NEXT SCREEN]

[SINGLE PUNCH]

S4s. When was the first time that a doctor or other health care professional told you that you had cancer?

1. Less than six months ago
2. Between six months and less than two years ago
3. Between two years and less than five years ago

4. Between five years and less than ten years ago
5. More than ten years ago

[PROGRAMMER: NEXT SCREEN]

[SELECT ALL THAT APPLY]

S5s. What type of cancer(s) were you diagnosed with?

- Acute lymphocytic (or lymphoblastic) leukemia (ALL)
- Basal cell carcinoma [CONTINUE TO S4c]
- Bladder cancer
- Bone cancer
- Breast cancer
- Brain cancer
- Cervical cancer
- Chronic lymphocytic leukemia (CLL)
- Chronic myeloid leukemia (CML)
- Colon & rectal
- Endometrial cancer
- Kaposi's sarcoma
- Kidney cancer
- Leukemia, includes Acute myeloid leukemia (AML)
- Lip & oral cancer
- Liver cancer
- Lung cancer
- Lymphoma, includes non-Hodgkin lymphoma, Hodgkin lymphoma Multiple myeloma
- Melanoma
- Merkel cell carcinoma [CONTINUE TO S4c]
- Mesothelioma
- Non-small cell lung cancer
- Nonmelanoma skin cancer [CONTINUE TO S4c]
- Oral cancer
- Ovarian cancer
- Pancreatic cancer
- Prostate cancer
- Sarcoma
- Skin cancer [CONTINUE TO S4c]
- Small cell lung cancer
- Squamous cell carcinoma [CONTINUE TO S4c]
- Thyroid Cancer
- Other

[Note: the distribution of S5s to be examined in the pretest to determine the feasibility of including quotas in main study]

[PROGRAMMER: NEXT SCREEN]
[SINGLE PUNCH]

S6s. Are you currently in active treatment for your cancer? Active treatment could include surgery, radiation, or receiving medication like chemotherapy, immunotherapy, or hormone therapy.

1. Yes [TERMINATE]
2. No [CONTINUE]

[PROGRAMMER: NEXT SCREEN]
[SELECT ALL THAT APPLY]

S7s. What type(s) of cancer treatment have you received for your cancer?
Select all that apply

- I received medications such as pills or infusions to treat cancer (for example: chemotherapy, immunotherapy, hormone therapy, targeted therapy)
- I received other cancer treatment (for example: surgery, radiation, stem cell or bone marrow transplant)
- I have not received any medical treatment for cancer [CONTINUE TO S4c]

[Note: the distribution of S7s to be examined in the pretest to determine the feasibility of restricting recruitment in the main study to those who received a systemic treatment]

[PROGRAMMER: NEXT SCREEN]
[SINGLE PUNCH]

S4c. Have you ever provided care for or made health care decisions for someone with cancer?

1. Yes [CONTINUE]
2. No [TERMINATE]

[PROGRAMMER: NEXT SCREEN]
[SINGLE PUNCH]

S5c. Was any of this care provided as part of a job (for example, as a nurse or professional home health aide)?

1. Yes [TERMINATE]
2. No [CONTINUE]

[PROGRAMMER: NEXT SCREEN]
[SELECT ALL THAT APPLY]

S6c. Thinking about the person you provided care for, what type of cancer(s) did they have?

- Acute lymphocytic (or lymphoblastic) leukemia (ALL)
- Basal cell carcinoma [TERMINATE]
- Bladder cancer
- Bone cancer
- Breast cancer
- Brain cancer
- Cervical cancer
- Chronic lymphocytic leukemia (CLL)
- Chronic myeloid leukemia (CML)
- Colon & rectal
- Endometrial cancer
- Kaposi's sarcoma
- Kidney cancer
- Leukemia, includes Acute myeloid leukemia (AML)
- Lip & oral cancer
- Liver cancer
- Lung cancer
- Lymphoma, includes non-Hodgkin lymphoma, Hodgkin lymphoma Multiple myeloma
- Melanoma
- Merkel cell carcinoma [TERMINATE]
- Mesothelioma
- Non-small cell lung cancer
- Nonmelanoma skin cancer [TERMINATE]
- Oral cancer
- Ovarian cancer
- Pancreatic cancer
- Prostate cancer
- Sarcoma
- Skin cancer [TERMINATE]
- Small cell lung cancer
- Squamous cell carcinoma [TERMINATE]
- Thyroid Cancer
- Other

[Note: the distribution of S6c to be examined in the pretest to determine the feasibility of including quotas in main study]

[PROGRAMMER: NEXT SCREEN]

[SELECT ALL THAT APPLY]

S7c. Thinking about the person you provided care for, what type(s) of cancer treatment have they received for their cancer?

Select all that apply

- They received medications such as pills or infusions to treat cancer (for example: chemotherapy, immunotherapy, hormone therapy, targeted therapy)
- They received other cancer treatment (for example: surgery, radiation, stem cell or bone marrow transplant)
- They have not received any medical treatment for cancer [TERMINATE]
- I don't know what type of cancer treatment they received

[Note: the distribution of S7c to be examined in the pretest to determine the feasibility of restricting recruitment in the main study to those who received a systemic treatment]

[PROGRAMMER: NEXT SCREEN]

[SINGLE PUNCH]

S8. What is your sex?

1. Male
2. Female
3. Prefer not to answer

[PROGRAMMER: NEXT SCREEN]

[SINGLE PUNCH]

S9. Are you Hispanic or Latino?

1. Yes
2. No
3. Prefer not to answer

[PROGRAMMER: NEXT SCREEN]

[SELECT ALL THAT APPLY]

S10. What is your race? (You may select one or more races.)

1. American Indian or Alaska Native
2. Asian
3. Black or African American
4. Native Hawaiian or other Pacific Islander
5. White
6. Prefer not to answer

[PROGRAMMER: NEXT SCREEN]

[SINGLE PUNCH]

S11. What is the highest level of school you have completed or the highest degree you have received?

1. Less than high school

2. High school graduate—high school diploma or the equivalent (for example: GED)
3. Some college but no degree
4. Vocational or Technical School degree
5. Associate's degree
6. Bachelor's degree (for example: BA, AB, BS)
7. Some postgraduate work but no degree
8. Advanced or post-graduate degree (for example: Master's degree, MD, DDS, JD, PhD, EdD)

[DISPLAY IF EFLAG=0 'INELIGIBLE']

[Thank and Terminate—Ineligible]

[PROGRAMMER: NEXT SCREEN]

We're sorry, but you are not eligible for this study. There are many possible reasons why people are not eligible for this study. These reasons were decided earlier by the researchers. However, thank you for your interest in this study and for taking the time to answer our questions today.

[TERMINATE IF EFLAG=0 'INELIGIBLE']

[IF EFLAG=1 'ELIGIBLE'; CONTINUE, RANDOMLY ASSIGN PARTICIPANTS TO A STUDY CONDITION]

[PROGRAMMER: NEXT SCREEN]

You are eligible to participate in the study. We will show you a website for a cancer treatment. Make sure you are comfortable and can read the screen from where you sit. The study will take about 20 minutes to complete. We ask you to complete the study in one sitting (without taking any breaks) in order to avoid distractions.

APPENDIX C: Accelerated Approval Study II Questionnaire

[Screener and consent to be inserted]

INTRODUCTION

Thank you for agreeing to participate in this study today. We are going to show you a website with information about a prescription drug that treats a kind of cancer and then ask you some questions about it.

//NEW SCREEN//

We'd like to start by telling you a bit about a kind of cancer. It's called acute lymphoblastic leukemia.

The word "acute" means that this type of leukemia can progress very quickly and, if not treated, can cause death within a few months.

Cancers start when cells in the body begin to grow out of control. Acute lymphoblastic leukemia is a cancer of a certain type of white blood cell called lymphocytes. This cancer starts in the bone marrow – the soft, spongy tissue inside bones that makes lymphocytes. It can also spread to other parts of the body.

With this cancer, the body makes too many immature lymphocytes which are not able to mature and work normally. These leukemia cells crowd out the normal cells in the bone marrow. This means there is less room for mature white blood cells (which fight infection), red blood cells (which carry oxygen), and platelets (which help blood to clot).

There are few treatment options available for people with acute lymphoblastic lymphoma.

//NEW SCREEN//

- Next we will show you the website.
- When you read it, imagine that someone close to you was recently diagnosed with acute lymphoblastic leukemia and you would like to learn more about their treatment options.
- Take as much time as you need to look at the website.
- After you leave the website you won't be able to return to it while answering the questions.

[Study 1: Display appropriate stimuli based on randomized experimental condition: no accelerated approval disclosure, low prominence/ physician labeling disclosure, high prominence/physician labeling disclosure, low prominence/consumer-friendly disclosure, high prominence/consumer-friendly disclosure]

| | |
|-------------------------------|-----------|
| Study 1 Design | |
| Accelerated Approval Language | Placement |

| | |
|----------------------------|------------------------------|
| Physician labeling version | Condition 1: High prominence |
| | Condition 2: Low prominence |
| Consumer-friendly version | Condition 3: High prominence |
| | Condition 4: Low prominence |
| None | Condition 5: N/A |

[Physician labeling version: This indication is based on response rate. An improvement in survival or disease-related symptoms has not been established. Continued approval for this indication may be contingent upon verification of clinical benefit in subsequent trials.]

[Consumer-friendly version: In a clinical trial, [Drug X] returned blood counts to normal. However, we currently do not know if [Drug X] helps people live longer or feel better. We continue to study [Drug X] in clinical trials to learn more about [Drug X]’s benefits.]

[Study 2: Display appropriate stimuli based on randomized experimental condition: approval basis, approval basis + unknown outcomes, approval basis + confirmatory trials, approval basis + unknown outcomes + confirmatory trials = consumer-friendly high prominence condition from Study 1]

| Study 2 Design | | | |
|------------------|---------|--|--|
| | | Confirmatory trials | |
| | | Absent | Present |
| Unknown outcomes | Absent | Condition 1: In a clinical trial, [Drug X] returned blood counts to normal. | Condition 2: In a clinical trial, [Drug X] returned blood counts to normal. We continue to study [Drug X] in clinical trials to learn more about [Drug X]’s benefits. |
| | Present | Condition 3: In a clinical trial, [Drug X] returned blood counts to normal. However, we currently do not know if [Drug X] helps people live longer or feel better. | Condition 4: In a clinical trial, [Drug X] returned blood counts to normal. However, we currently do not know if [Drug X] helps people live longer or feel better. We continue to study [Drug X] in clinical trials to learn more about [Drug X]’s benefits. |

//NEW SCREEN//

Question Type: Single Punch

Q1. Were you able to view the website?

| Value | Value Label |
|-------|-------------|
| 01 | Yes |
| 00 | No |
| 02 | Not Sure |
| -99 | Refused |

[If Q1=00 OR Q1=02 OR Q1=-99, Terminate]

//NEW SCREEN//

Question Type: Single Punch

[Randomize order of 01-03. 04 always appears last.]

Q2. [Drug X] is a treatment option for

| Value | Value Label |
|-------|------------------------------|
| 01 | Human Immunodeficiency Virus |
| 02 | Myocardial infarction |
| 03 | Acute lymphoblastic leukemia |
| 04 | Not sure / Don't know |
| -99 | Refused |

//NEW SCREEN//

Question type: Text box

Q3. What can [Drug X] do for people with acute lymphoblastic leukemia?

[Open Field]

[Codes: blood cell counts return to normal, gets rid of any detectable evidence of leukemia/no signs of leukemia/remission, cure, live longer, feel better/reduce symptoms, other codes to be determined based on cognitive interviews and pretesting]

//NEW SCREEN//

Question Type: Single Punch

Q4. Did the website say that there are things we **do not know yet** about what [Drug X] can do for people with acute lymphoblastic leukemia?

| Value | Value Label |
|-------|-------------|
| 01 | Yes |
| 00 | No |
| 02 | Not Sure |
| -99 | Refused |

//NEW SCREEN//

[If Q4=01, ask Q5]

Question type: Text box

Q5. What don't we know yet about what [Drug X] can do for people with acute lymphoblastic leukemia? (Please be as detailed and specific as possible when entering your answer in the space provided.)

| |
|--|
| |
|--|

[Codes: blood cell counts return to normal, gets rid of any detectable evidence of leukemia/no signs of leukemia/remission, cure, live longer, feel better/reduce symptoms, other codes to be determined based on cognitive interviews and pretesting]

//NEW SCREEN//

Question Type: Grid

[Randomize order of Q6 A – D]

Q6. Based on the information on the website, mark whether each of the statements below is true, false, or you don't know:

| Variable | Variable Text |
|----------|---|
| Q6_A | [Drug X] has been shown to cure acute lymphoblastic leukemia. |
| Q6_B | [Drug X] has been shown to help people with acute lymphoblastic leukemia live longer. |
| Q6_C | [Drug X] has been shown to help people with acute lymphoblastic leukemia feel better. |
| Q6_D | [Drug X] helps blood cell counts return to normal. |

| Value | Value Label |
|-------|-------------|
| 01 | True |
| 02 | False |
| 03 | Don't Know |
| -99 | Refused |

//NEW SCREEN//

Question Type: Grid

[Randomize order of 00-02: first to last or last to first]

Q7. Please select one response. On average, people with acute lymphoblastic leukemia who take [Drug X]...

| Value | Value Label |
|-------|--|
| 00 | Don't live as long as people who don't take [Drug X]. |
| 01 | Live the same amount of time as people who don't take [Drug X]. |

| | |
|-----|---|
| 02 | Live longer than people who don't take [Drug X]. |
| 03 | No one knows yet whether people who take [Drug X] live longer or not. |
| -99 | Refused |

//NEW SCREEN//

[If Q7=02, ask Q8]

Question type: Numeric string plus drop-down option

Q8. You mentioned that [Drug X] would help people with acute lymphoblastic leukemia live longer. On average, how much longer do you think people with acute lymphoblastic leukemia who take [Drug X] would live? Your best guess is fine.

(Please write a number in the space below and choose from the dropdown list whether it is weeks, months, or years. You will need to enter a single number, so if you have a range in mind, please pick the middle number in the range.)

(Q8_A: Open ended numeric string)

Q8_B: Unit selection answer choices

| Value | Value Label |
|-------|---------------|
| 1 | weeks longer |
| 2 | months longer |
| 3 | years longer |
| -99 | Refused |
| -100 | Valid skip |

//NEW SCREEN//

Question Type: Single Punch

Q9. The website suggests that [Drug X] will improve the quality of life for people who take it...

[Randomize order of response options]

| Value | Value Label |
|-------|-------------|
| 01 | Disagree |
| 02 | Agree |
| -99 | Refused |

//NEW SCREEN//

[Randomize order of Q10 – Q11]

[ASK Q10 IF PRETEST OR MAIN STUDY]

Please indicate your level of agreement with the following statements.

Question Type: Single Punch

Q10. The benefits of [Drug X] outweigh any side effects it may have.

| Value | Value Label |
|-------|---------------------|
| 01 | 1 Strongly disagree |
| 02 | 2 Disagree |
| 03 | 3 Agree |
| 04 | 4 Strongly agree |
| 99 | Don't know |
| -99 | Refused |

Question Type: Single Punch

Q11. [Drug X] might have serious side effects.

| Value | Value Label |
|-------|---------------------|
| 01 | 1 Strongly disagree |
| 02 | 2 Disagree |
| 03 | 3 Agree |
| 04 | 4 Strongly agree |
| 99 | Don't know |
| -99 | Refused |

//NEW SCREEN//

[DO NOT SHOW Q12 OR Q12alt IN STUDY 1; RANDOMIZE TO Q12 OR Q12alt IN STUDY 2 PRETEST]

Question Type: Single Punch

[Randomize order of Q12 A – B]

Q12. Based on the information on the website, mark whether each of the statements below is true, false, or you don't know: ...

| Variable | Variable Text |
|----------|---|
| Q12_A | Currently, more data is needed to know whether [Drug X] helps people with acute lymphoblastic leukemia live longer. |
| Q12_B | Currently, more date is needed to know whether [Drug X] helps people with acute lymphoblastic leukemia feel better. |

| Value | Value Label |
|-------|-------------|
| 00 | True |
| 01 | False |
| 02 | Don't know |
| -99 | Refused |

//NEW SCREEN//

Question Type: Multi-Punch

Q12alt. Researchers continue to study [Drug X] in clinical trials. What do you think are the main reasons additional clinical trials are needed? (check all that apply):

| Variable | Variable Text |
|-----------|---|
| Q12alt_A | Because more data can help us learn even more about [Drug X]'s benefits. |
| Q12alt_B | Because we don't have enough data to know whether [Drug X] helps people with acute lymphoblastic leukemia live longer. |
| Q12alt_C | Because we don't have enough data to know whether [Drug X] helps people with acute lymphoblastic leukemia feel better. |
| Q12alt_D | Because more data can help us learn even more about [Drug X]'s side effects. |
| Q12alt_E | Because we don't have enough data to know whether [Drug X] improves quality of life for people with acute lymphoblastic leukemia. |
| Q12alt_F | Other reason, specify |
| Q12alt_G | None of the above. |
| Q12alt_DK | Don't know |

| Value | Value Label |
|-------|-------------|
| 00 | Not checked |
| 01 | Checked |
| -99 | Refused |

//NEW SCREEN//

Question Type: MultiPunch

Q13. If a loved one was diagnosed with acute lymphoblastic leukemia, I would suggest that they ask their doctor about...

[Randomize order]

| | |
|-------|---------------------|
| Q13_A | Taking [Drug X] |
| Q13_B | [Drug X]'s risks |
| Q13_C | [Drug X]'s benefits |

| | |
|-------|-------------------------|
| Q13_D | [Drug X]'s FDA approval |
|-------|-------------------------|

| Value | Value Label |
|-------|-------------|
| 00 | No |
| 01 | Yes |
| -99 | Refused |

//NEW SCREEN//

Question Type: Grid

[Randomize order of Q14 A – C]

Q14. Please check how much you agree or disagree with the following statements about the website you saw.

| | |
|-------|---|
| Q14_A | This website is a reliable source of information about the risks and benefits of [Drug X]. |
| Q14_B | I feel I've been accurately informed after viewing this website. |
| Q14_C | This website provides consumers with essential information for deciding whether to ask a doctor about [Drug X]. |

| Value | Value Label |
|-------|-------------------|
| 01 | Strongly disagree |
| 02 | Disagree |
| 03 | Neither |
| 04 | Agree |
| 05 | Strongly Agree |
| -99 | Refused |

//NEW SCREEN//

Question Type: Single Punch

Q15a. The following statement **may or may not** have been on the website you saw.

Did you see this statement on the website?

Study 1 – condition 1, 2 display: An improvement in survival or disease-related symptoms has not been established. Continued approval for this indication may be contingent upon verification of clinical benefit in subsequent trials.

Study 1 – condition 3, 4 display: In a clinical trial, [Drug X] returned blood counts to normal. However, we currently do not know if [Drug X] helps people live longer or feel better. We continue to study [Drug X] in clinical trials to learn more about [Drug X]'s benefits.

Study 1 – condition 5 - control condition: randomize displaying either physician labeling or consumer-friendly disclosure condition.

[Study 2: Unknown outcomes statement]

Study 2 – condition 1, 2, 3, 4 display: However, we currently do not know if [Drug X] helps people live longer or feel better.

Statement: [Display the disclosure that matches the programming notes above]

| Value | Value Label |
|-------|-------------------------------------|
| 01 | Yes, I saw it on the website |
| 00 | No, I did not see it on the website |
| -99 | Refused |

//NEW SCREEN//

[Keep the text below on screen for Q16a and Q17a:

Please read the statement below.

Study 1 – condition 1, 2 display: An improvement in survival or disease-related symptoms has not been established. Continued approval for this indication may be contingent upon verification of clinical benefit in subsequent trials.

Study 1 – condition 3, 4 display: In a clinical trial, [Drug X] returned blood counts to normal. However, we currently do not know if [Drug X] helps people live longer or feel better. We continue to study [Drug X] in clinical trials to learn more about [Drug X]’s benefits.

Study 1 – condition 5 - control condition: randomize displaying either physician labeling or consumer-friendly disclosure condition.

[Study 2: Display unknown outcomes statement]

Study 2 – condition 1, 2, 3, 4: However, we currently do not know if [Drug X] helps people live longer or feel better.

Statement: [Display the disclosure that matches the programming notes above]

Question Type: Grid

Q16a. In my opinion, the statement is...

[RANDOMIZE ORDER OF ITEMS Q16a_1 to Q16a_4]

| | | 1 | 2 | 3 | 4 | 5 | 6 | |
|--------|-------------|--------------------------|--------------------------|--------------------------|--------------------------|--------------------------|--------------------------|-----------------|
| Q16a_1 | Confusing | <input type="checkbox"/> | <input type="checkbox"/> | <input type="checkbox"/> | <input type="checkbox"/> | <input type="checkbox"/> | <input type="checkbox"/> | Clear |
| Q16a_2 | Complex | <input type="checkbox"/> | <input type="checkbox"/> | <input type="checkbox"/> | <input type="checkbox"/> | <input type="checkbox"/> | <input type="checkbox"/> | Straightforward |
| Q16a_3 | Unimportant | <input type="checkbox"/> | <input type="checkbox"/> | <input type="checkbox"/> | <input type="checkbox"/> | <input type="checkbox"/> | <input type="checkbox"/> | Important |
| Q16a_4 | Misleading | <input type="checkbox"/> | <input type="checkbox"/> | <input type="checkbox"/> | <input type="checkbox"/> | <input type="checkbox"/> | <input type="checkbox"/> | Honest |

//NEW SCREEN//

Question type: Text Box

Q17a. What does the statement mean to you?

[Open Field]

[Codes to be determined based on cognitive interviews and pretesting]

//NEW SCREEN//

[Show Q15b only in Study 2]

Question Type: Single Punch

Q15b. The following statement **may or may not** have been on the website you saw.

Did you see this statement on the website?

Study 2 condition 1, 2, 3, 4: We continue to study [Drug X] in clinical trials to learn more about [Drug X]'s benefits.

Statement: [Display the disclosure that matches the programming notes above]

| Value | Value Label |
|-------|-------------------------------------|
| 01 | Yes, I saw it on the website |
| 00 | No, I did not see it on the website |
| -99 | Refused |

//NEW SCREEN//

[Keep the text below on screen for Q16b and Q17b:

Please read the statement below.

[Study 2: Display confirmatory trials statement]

Study 2 condition 1, 2, 3, 4 display: We continue to study [Drug X] in clinical trials to learn more about [Drug X]'s benefits.

Statement: [Display the disclosure that matches the programming notes above]

[Show Q16b only in Study 2]

Question Type: Grid

Q16b. In my opinion, the statement is...

[RANDOMIZE ORDER OF ITEMS Q16b_1 to Q16b_4]

| | | 1 | 2 | 3 | 4 | 5 | 6 | |
|--------|-------------|--------------------------|--------------------------|--------------------------|--------------------------|--------------------------|--------------------------|-----------------|
| Q16b_1 | Confusing | <input type="checkbox"/> | <input type="checkbox"/> | <input type="checkbox"/> | <input type="checkbox"/> | <input type="checkbox"/> | <input type="checkbox"/> | Clear |
| Q16b_2 | Complex | <input type="checkbox"/> | <input type="checkbox"/> | <input type="checkbox"/> | <input type="checkbox"/> | <input type="checkbox"/> | <input type="checkbox"/> | Straightforward |
| Q16b_3 | Unimportant | <input type="checkbox"/> | <input type="checkbox"/> | <input type="checkbox"/> | <input type="checkbox"/> | <input type="checkbox"/> | <input type="checkbox"/> | Important |
| Q16b_4 | Misleading | <input type="checkbox"/> | <input type="checkbox"/> | <input type="checkbox"/> | <input type="checkbox"/> | <input type="checkbox"/> | <input type="checkbox"/> | Honest |

//NEW SCREEN//

[Show Q17b only in Study 2]

Question type: Text Box

Q17b. What does the statement mean to you?

[Open Field]

[Codes to be determined based on cognitive interviews and pretesting]

//NEW SCREEN//

[ASK Q18 IF PRETEST OR MAIN STUDY]

Question Type: Single Punch

Q18. How often do you need to have someone help you when you read instructions, pamphlets, or other written material from your doctor or pharmacy?

| Value | Value Label |
|-------|-------------|
| 01 | Never |
| 02 | Rarely |
| 03 | Sometimes |
| 04 | Often |
| 05 | Always |
| -99 | Refused |

//NEW SCREEN//

[ASK Q19 IF PRETEST OR MAIN STUDY]

Question Type: Single Punch

Q19. How familiar were you with treatments for acute lymphoblastic leukemia before today?

| Value | Value Label |
|-------|--------------|
| 01 | Not at all |
| 02 | A little bit |
| 03 | Somewhat |
| 04 | Quite a bit |
| 05 | Extremely |
| -99 | Refused |

//NEW SCREEN//

Q20. On average, how likely would a person diagnosed with acute lymphoblastic leukemia be to live more than 5 years?

| Value | Value Label |
|-------|-------------------|
| 01 | Not at likely |
| 02 | Somewhat likely |
| 03 | Moderately likely |
| 04 | Very likely |
| -99 | Refused |

[CANCER SURVIVORS ONLY]

Question Type: Multi-Punch

Q21s. What type(s) of cancer treatment did you receive for your cancer? (check all that apply)

| | |
|--------|---|
| Q21s_A | Surgery |
| Q21s_B | Radiation |
| Q21s_C | Chemotherapy (pills or infusions) |
| Q21s_D | Immunotherapy, hormone therapy, or targeted therapy |
| Q21s_E | Stem cell or bone marrow transplant |
| Q21s_F | Other cancer treatments |

| Value | Value Label |
|-------|-------------|
| 00 | Not checked |
| 01 | Checked |
| -99 | Refused |

[CANCER CAREGIVERS ONLY]

Question Type: Multi-Punch

Q21c. Thinking about the person you provided cancer-related care for, what type(s) of cancer treatment have they received for their cancer? (check all that apply)

| | |
|--------|---|
| Q21c_A | Surgery |
| Q21c_B | Radiation |
| Q21c_C | Chemotherapy (pills or infusions) |
| Q21c_D | Immunotherapy, hormone therapy, or targeted therapy |
| Q21c_E | Stem cell or bone marrow transplant |
| Q21c_F | Other cancer treatments |
| Q21c_G | Don't know |

| Value | Value Label |
|-------|-------------|
| 00 | Not checked |
| 01 | Checked |
| -99 | Refused |

//NEW SCREEN//

Question Type: Single Punch

Q22. Have you ever heard of the term “accelerated approval” as it relates to prescription drugs and the Food and Drug Administration?

| Value | Value Label |
|-------|-------------|
| 01 | Yes |
| 02 | No |
| 03 | Don't know |
| -99 | Refused |

//NEW SCREEN//

Question Type: Single Punch

[If Q22=01, ask Q23]

Q23. How familiar are you with the topic of accelerated approval of prescription drugs?

| Value | Value Label |
|-------|-------------------|
| 01 | A little familiar |
| 02 | Somewhat familiar |
| 03 | Very familiar |
| -99 | Refused |

//NEW SCREEN//

[CANCER CAREGIVERS ONLY]

Question Type: Single Punch

Q24c. Think about the individual for whom you are currently providing or have provided cancer-related care. What is your relationship to that person? They are my:

| Value | Value Label |
|-------|----------------|
| 01 | Spouse/partner |
| 02 | Child |
| 03 | Parent |
| 04 | Sibling |
| 05 | Friend |
| 06 | Other, specify |

//NEW SCREEN//

[CANCER CAREGIVERS ONLY]

Question Type: Single Punch

Q25c. Think about the individual for whom you are currently providing or have provided cancer-related care. About how long have you provided care for this person?

| Value | Value Label |
|-------|---------------------|
| 01 | Less than 30 days |
| 02 | 1 to 6 months |
| 03 | 7 months to 2 years |
| 04 | 3 to 5 years |
| 05 | More than 5 years |

//NEW SCREEN//

[ASK Q26 IF PRETEST OR MAIN STUDY]

Question Type: Single Punch

Q26. How much do you trust information provided by pharmaceutical companies about prescription drugs?

| Value | Value Label |
|-------|-------------|
| 01 | Not at all |
| 02 | A little |
| 03 | Some |
| 04 | A lot |

//NEW SCREEN//

[PRETEST ONLY]

Question Type: Single Punch

Q27. How similar was the website for [DRUG X] to websites that you have seen for other prescription drugs?

| Value | Value Label |
|-------|--------------------|
| 01 | Not at all similar |
| 02 | Somewhat similar |
| 03 | Very similar |
| 04 | Extremely similar |
| 98 | Don't know |
| -99 | Refused |

//NEW SCREEN//

The purpose of this study is to learn about reactions to prescription drug information. To get a real-life reaction, we used a pretend product in this study. While [Drug X] is not a real product and is not available for sale, your participation in this important study helps FDA better understand how to communicate the benefits and risks of prescription drugs to consumers clearly and usefully. Your responses will help make prescription drug information clearer. Please see your health care professional for questions about acute lymphoblastic leukemia.

You have been very helpful. Thank you very much for your participation!

[PRETEST ONLY]

Question Type: Text box

Q30. Please share any additional thoughts you had about the website or this survey.

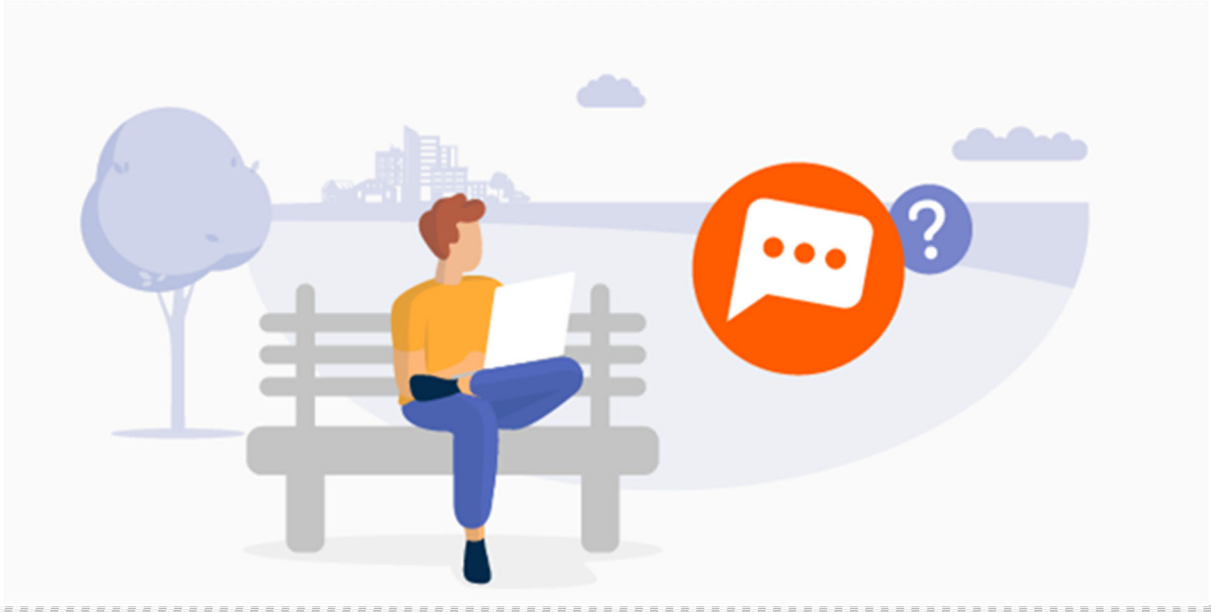
[Open Field]

APPENDIX D:

Pretest and Main Study Recruitment Email

LifePoints

Hello [FIRSTNAME],



You're so close to your next reward, [FIRSTNAME]

WANTED, YOUR OPINION!

[GO NOW!](#)

You've been selected amongst just a few LifePoints' members to fast track you to your next reward, [FIRSTNAME].

Take this survey now for the chance to collect more LPs and get closer to your next reward.

Hurry! Use the button below to take your next survey now.

[GO NOW!](#)

LifePoints is the rewards platform operated by Lightspeed (a Kantar owned company). Our members complete surveys to earn virtual points (LPs) that can be redeemed for e-gift cards and PayPal.

[COMMUNITY](#) [HELP](#) [T&Cs](#) [PRIVACY](#)



© Copyright LifePoints 2021. All rights reserved.

**LifePoints is operated by Lightspeed LLC, 685 US-206, Suite 204,
Bridgewater, New Jersey NJ 08807, USA.**

Please add [*pulse@emails.lifepointspanel.com](mailto:pulse@emails.lifepointspanel.com) to your address book to ensure you receive our emails.

*Please note this address is for delivery purposes only. To contact us please [click here](#).

You received this email because you (or someone in your household) has registered with the LifePoints panel. If you wish to be removed from the LifePoints panel, please [click here](#).