



Introduction to Psychoacoustic Sound Study Video



Legal matter

Test description and its motivation

Hardware/Software Requirements

List of steps

Schedule

Next steps

Privacy/Right to Exit

- Consent and Privacy
- Personal information (name, email, phone number) will NOT be shared
 - Zip code will be shared with your Participant Identification Number
- Exit the Test at any time

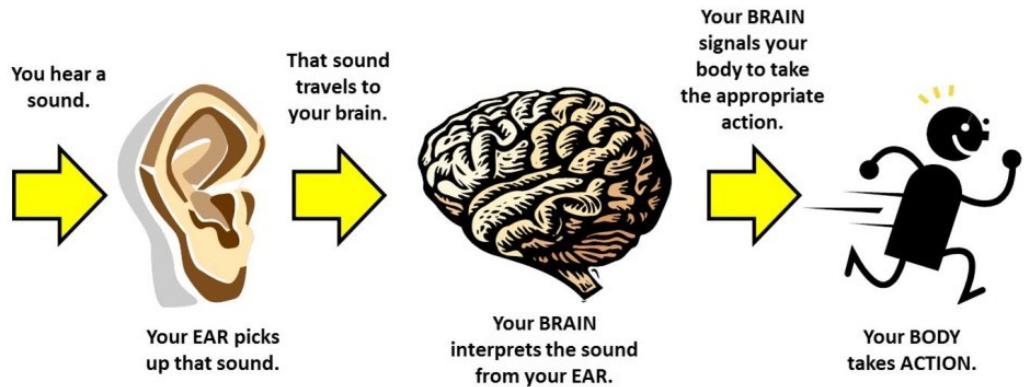


What is a psychoacoustic test and why?



HOW PSYCHOACOUSTICS WORKS

A visualization for the rest of us by Thomas R. Lunsford



- Providing your reaction to sounds
- Web-based survey
- Rating annoyance to sounds
- Increases understanding for mitigating effects of aviation noise; may inform policy-making and aircraft design

Requirements

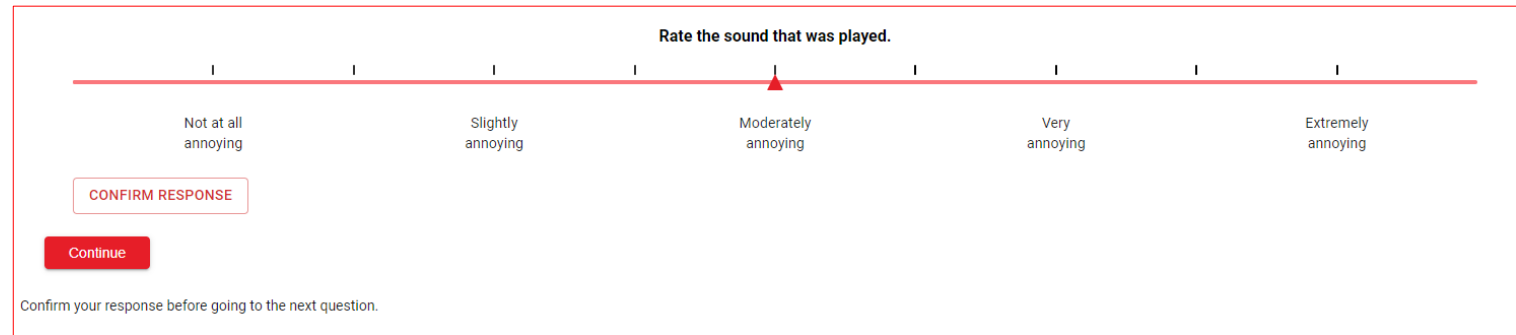


- Computer
- Stable internet connection
- Over ear headphones
- Respite from loud events prior to taking the survey
- Quiet room free of distractions



What are the steps involved?

- Introduction to the test
- Calibration ←
- Familiarization ←
- Practice Session ←
- Test sessions ←
 - Rate annoyance to sounds
- Post-test survey ←
- Technical Difficulties/Interfering Events



Rate the sound that was played.

Not at all annoying Slightly annoying Moderately annoying Very annoying Extremely annoying

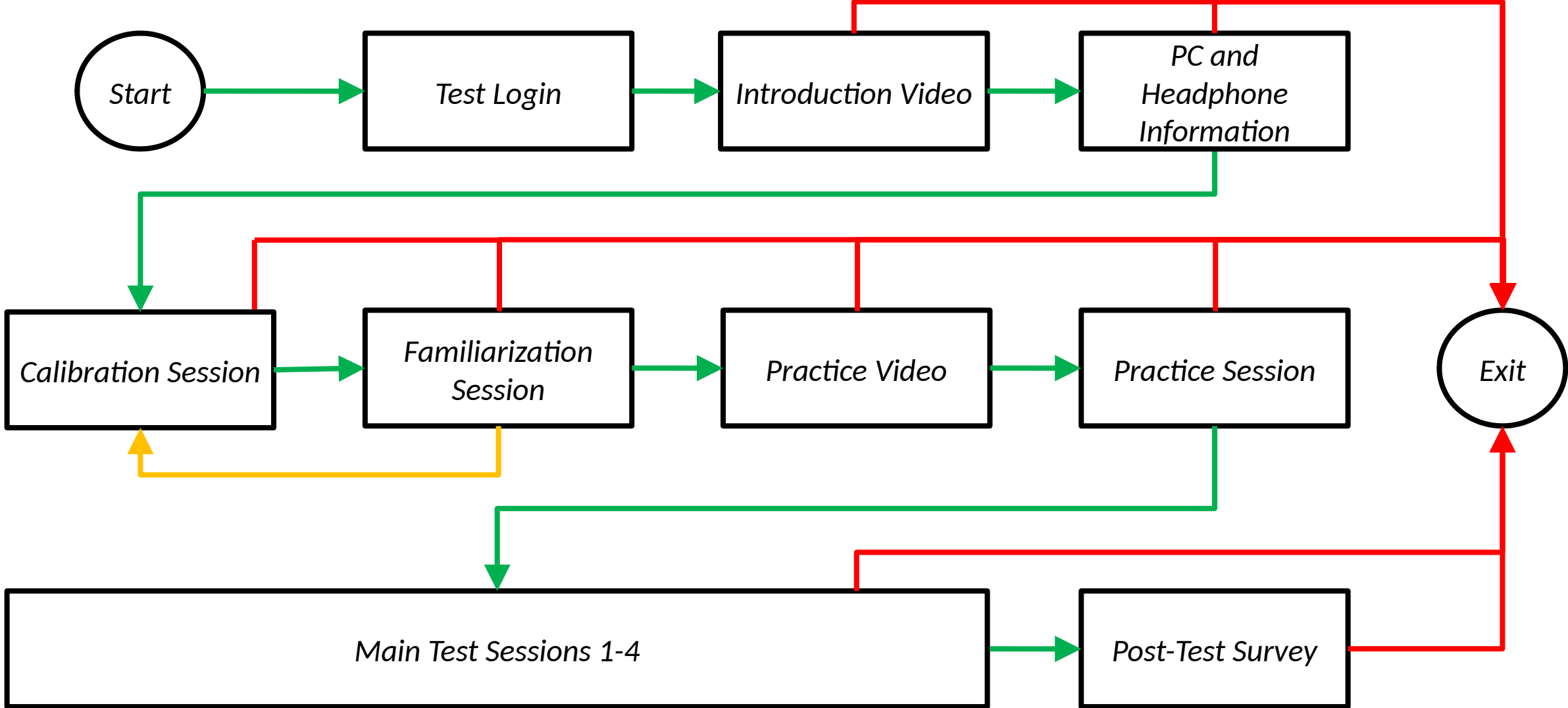
CONFIRM RESPONSE

Continue

Confirm your response before going to the next question.

The screenshot shows a horizontal scale from 1 to 5 with labels: 'Not at all annoying', 'Slightly annoying', 'Moderately annoying', 'Very annoying', and 'Extremely annoying'. A red triangle marker is positioned at the third tick mark, corresponding to 'Moderately annoying'. Below the scale are two buttons: 'CONFIRM RESPONSE' (white with red border) and 'Continue' (solid red). A small instruction at the bottom reads 'Confirm your response before going to the next question.'

Flowchart



Next steps, Questions, and Troubleshooting

- Friday September 3, 2022, until Friday, September 10, 2022.
- For troubleshooting, contact proctor HMMH, 24/7
 - Email NasaSoundStudy@hmmh.com
 - Phone (781) 852-3199
- General questions about the test must wait.
- FAQ
- Next steps
 - Familiarization
 - Calibration



Thank you!



We appreciate your participation
in this very important survey for NASA