



# Introduction to Psychoacoustic Sound Study Video



---

*Legal matter*

---

*Test description and its motivation*

---

*Hardware/Software Requirements*

---

*List of steps*

---

*Schedule*

---

*Next steps*

# Privacy/Right to Exit

---

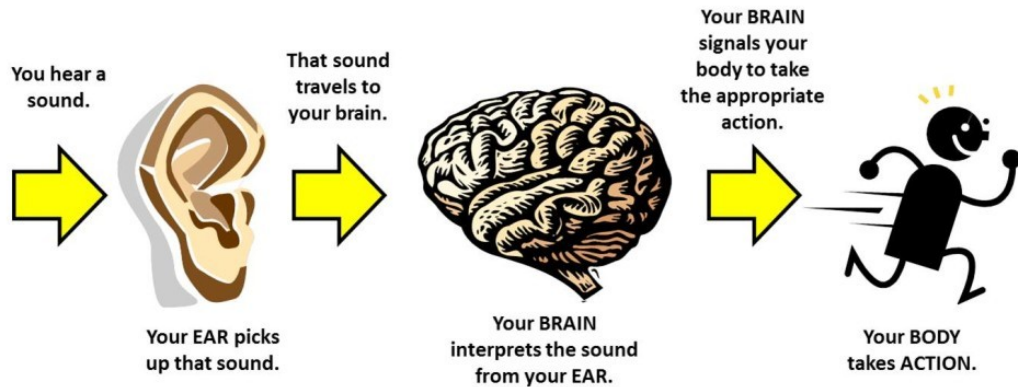
- Consent and Privacy
- Personal information (name, email, phone number) will NOT be shared
  - Zip code will be shared with your Participant Identification Number
- Exit the Test at any time



# What is a psychoacoustic test and why?

## HOW PSYCHOACOUSTICS WORKS

A visualization for the rest of us by Thomas R. Lunsford



- Providing your reaction to sounds
- Web-based survey
- Rating annoyance to sounds
- Increases understanding for mitigating effects of aviation noise; may inform policy-making and aircraft design

# Requirements

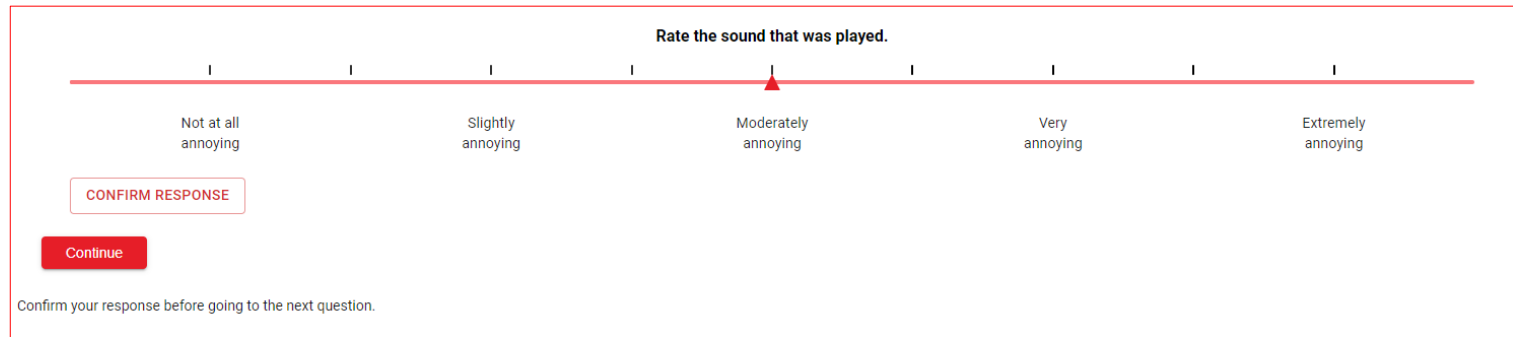


- Computer
- Stable internet connection
- Over ear headphones
- Respite from loud events prior to taking the survey
- Quiet room free of distractions



# What are the steps involved?

- Introduction to the test
- Calibration ←
- Familiarization ←
- Practice Session ←
- Test sessions ←
  - Rate annoyance to sounds
- Post-test survey ←
- Technical Difficulties/Interfering Events



Rate the sound that was played.

Not at all annoying      Slightly annoying      Moderately annoying      Very annoying      Extremely annoying

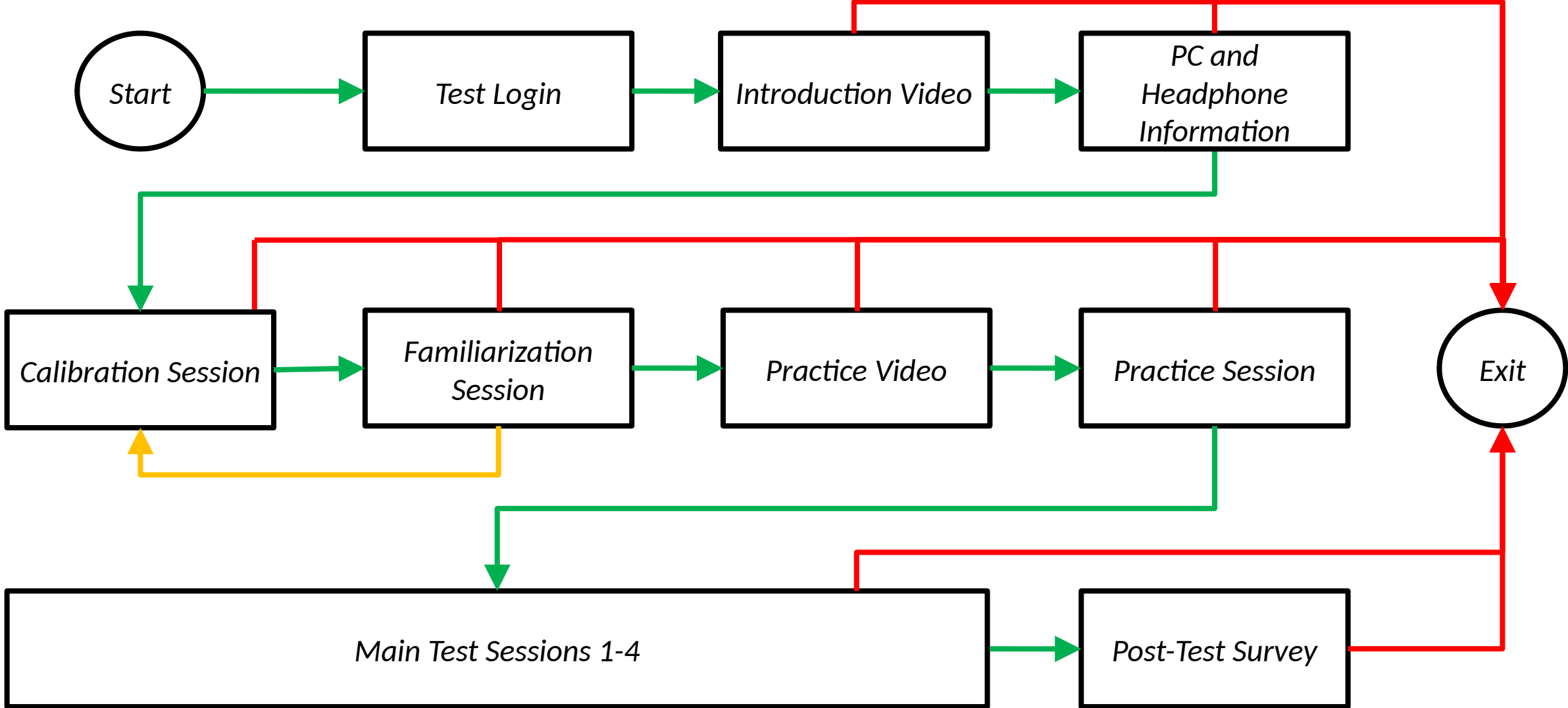
CONFIRM RESPONSE

Continue

Confirm your response before going to the next question.

The screenshot shows a horizontal scale from 1 to 5 with labels: 'Not at all annoying', 'Slightly annoying', 'Moderately annoying', 'Very annoying', and 'Extremely annoying'. A red triangle marker is positioned at the third tick mark, corresponding to 'Moderately annoying'. Below the scale are two buttons: 'CONFIRM RESPONSE' (white with red border) and 'Continue' (solid red). A small instruction at the bottom reads 'Confirm your response before going to the next question.'

# Flowchart



# Next steps, Questions, and Troubleshooting

---

- Friday September 3, 2022, until Friday, September 10, 2022.
- For troubleshooting, contact proctor HMMH, 24/7
  - Email [NasaSoundStudy@hmmh.com](mailto:NasaSoundStudy@hmmh.com)
  - Phone (781) 852-3199
- General questions about the test must wait.
- FAQ
- Next steps
  - Familiarization
  - Calibration





# Thank you!

---



We appreciate your participation  
in this very important survey for NASA