

Login page for the training



Environmental Assessment Training Series (EATS)



Welcome to CDC training. Please sign in below. Or [create a new account here.](#)

The training uses HTML5 Compatible Browsers. If you have problems accessing the training contact us at NEARS@cdc.gov.

User Name:

Password:

[Forgot Password?](#)

Conditions of Use: *I understand and agree to the Conditions of Use stated below and will use this application in the manner in which it is intended.*

This warning banner provides privacy and security notices consistent with applicable federal laws, directives, and other federal guidance for accessing this Government system, which includes (1) this computer network, (2) all computers connected to this network, and (3) all devices and storage media attached to this network or to a computer on this network.

- This system is provided for Government-authorized use only.
- Unauthorized or improper use of this system is prohibited and may result in disciplinary action and/or civil and criminal penalties.
- Personal use of social media and networking sites on this system is limited as to not interfere with official work duties and is subject to monitoring.
- By using this system, you understand and consent to the following:
 - The Government may monitor, record, and audit your system usage, including usage of personal devices and email systems for official duties or to conduct HHS business. Therefore, you have no reasonable expectation of privacy regarding any communication or data transiting or stored on this system. At any time, and for any lawful Government purpose, the government may monitor, intercept, and search and seize any communication or data transiting or stored on this system.

Any communication or data transiting or stored on this system may be disclosed or used for any lawful Government purpose.

Form Approved

OMB No. 0920-0980

Exp. Date 08/31/2022

CDC estimates the average public reporting burden for this collection of information (EATS 101) as 10 hours per response, including the time for reviewing instructions, searching existing data/information sources, gathering and maintaining the data/information needed, and completing and reviewing the collection of information. An agency may not conduct or sponsor, and a person is not required to respond to a collection of information unless it displays a currently valid OMB control number. Send comments regarding this burden estimate or any other aspect of this collection of information, including suggestions for reducing this burden, to: CDC/ATSDR Information Collection Review Office, 1600 Clifton Road NE, MS D-74, Atlanta, Georgia 30333; ATTN: PRA (0920-0980)

[About CDC](#) [Jobs](#) [Funding](#) [Policies](#) [Privacy](#) [FOIA](#) [No Fear Act](#) [OIG](#)

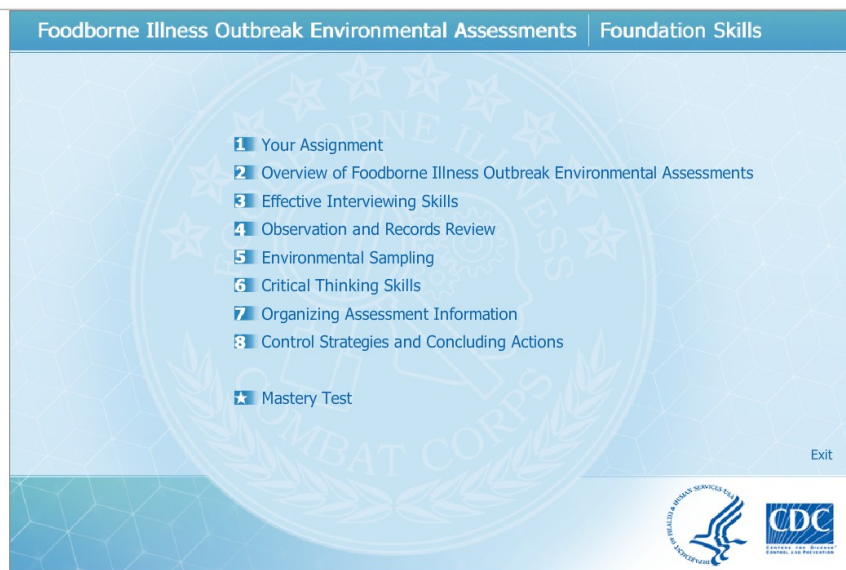
1600 Clifton Road Atlanta, GA 30329-4027 USA
800-CDC-INFO (800-232-4636), TTY: 888-232-6348
[Email CDC-INFO](#)

[U.S. Department of Health & Human Services](#)
[HHS/Open](#)
[USA.gov Vulnerability Disclosure Policy](#)

Attachment 6: NEARS Environmental Assessment Training on Foodborne Illness Outbreaks (EATS) (screenshots)

This training on conducting environmental assessments during foodborne illness outbreak investigations contains 8 lessons (Screenshot 1). NEARS participants are encouraged to take this training.

Screenshot 1



Lesson 1 provides an overview of the training (Screenshot 2).

Screenshot 2



Attachment 6: NEARS Environmental Assessment Training on Foodborne Illness Outbreaks (EATS) (screenshots)

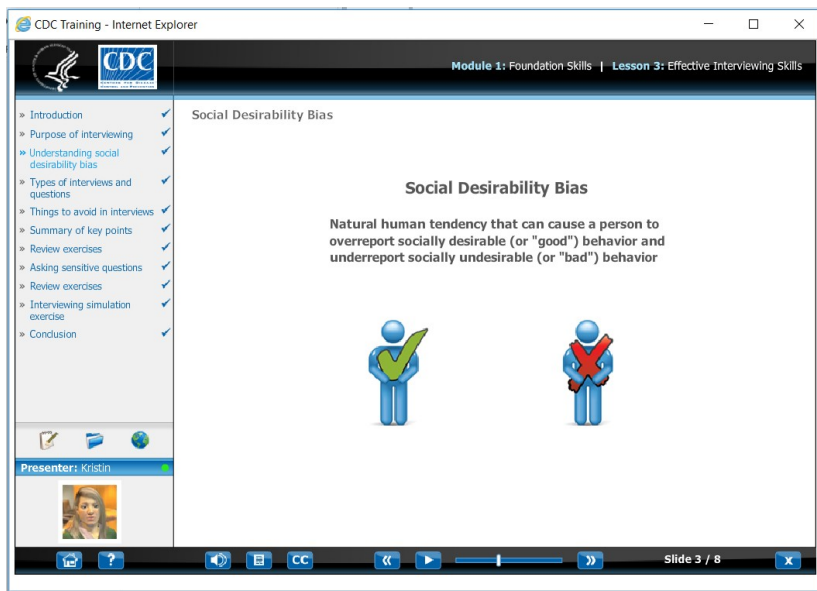
Lesson 2 provides an overview of foodborne outbreak environmental assessments (Screenshot 3).

Screenshot 3



Lesson 3 provides information on conducting effective interviews to learn information from food workers and managers during an investigation (Screenshot 4).

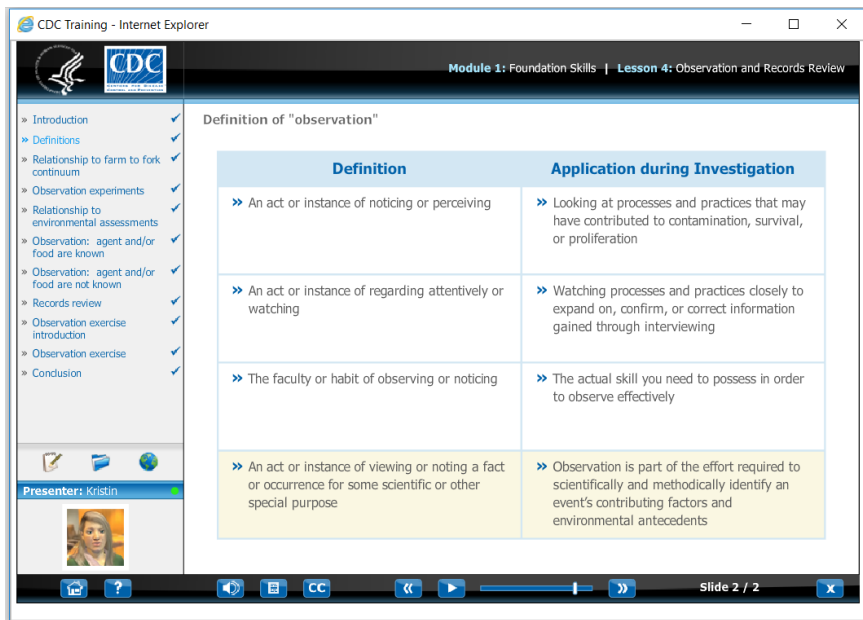
Screenshot 4



Attachment 6: NEARS Environmental Assessment Training on Foodborne Illness Outbreaks (EATS) (screenshots)

Lesson 4 provides information on conducting observations to learn information from the environment during the investigation (Screenshot 5).

Screenshot 5



Lesson 5 provides information on when, where, and how to collect environmental samples during an investigation (Screenshot 6).

Screenshot 6



Attachment 6: NEARS Environmental Assessment Training on Foodborne Illness Outbreaks (EATS) (screenshots)

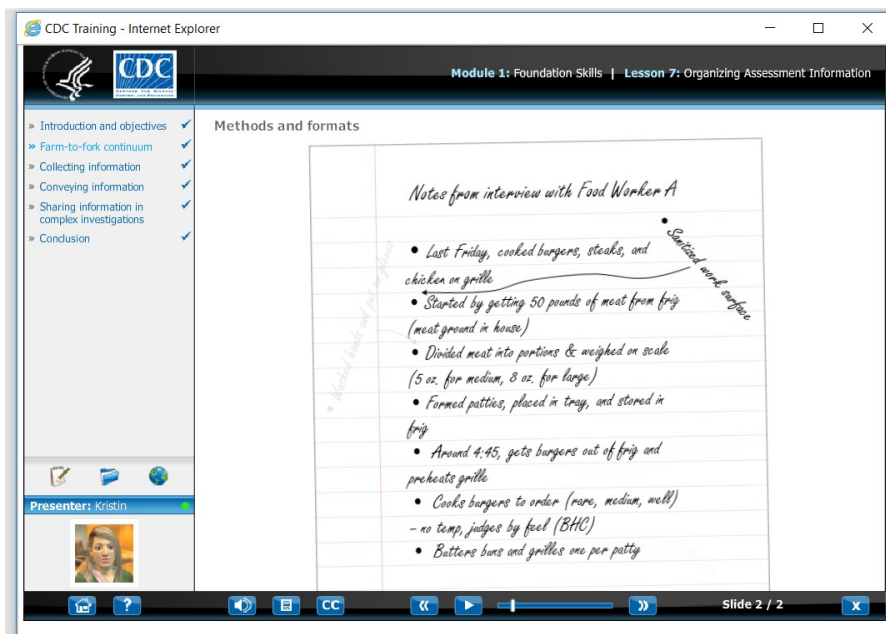
Lesson 6 provides information on the importance of critical thinking during investigations, and how to improve critical thinking skills (Screenshot 7).

Screenshot 7



Lesson 7 provides information on how to organize environmental assessment information to complete the investigation (Screenshot 8).

Screenshot 8



Lesson 8 provides information no implementing control strategies in the outbreak establishment to stop the current outbreak and prevent future ones (Screenshot 9).

Attachment 6: NEARS Environmental Assessment Training on Foodborne Illness Outbreaks (EATS) (screenshots)

Screenshot 9



The training concludes with a 40-item test that assess mastery of the course material (Screenshot 10).

Screenshot 10

