



**Transmission of material in this news release is embargoed until 8:30 a.m. (ET) Friday, March 10, 2023**

USDL-23-0436

Technical information:

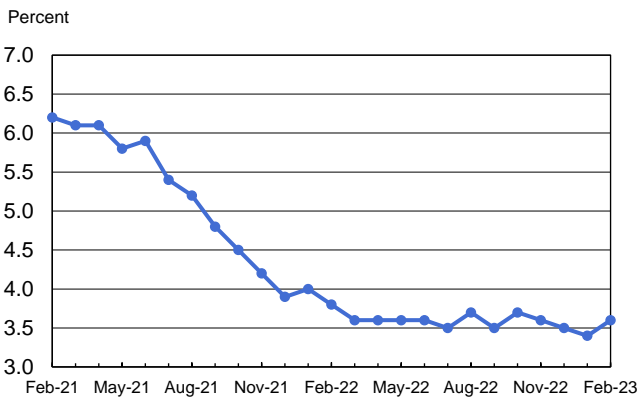
Household data: (202) 691-6378 • cpsinfo@bls.gov • www.bls.gov/cps  
 Establishment data: (202) 691-6555 • cesinfo@bls.gov • www.bls.gov/ces

Media contact: (202) 691-5902 • PressOffice@bls.gov

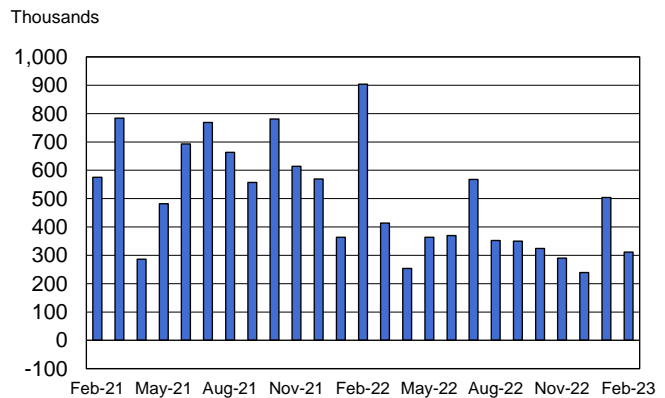
**THE EMPLOYMENT SITUATION — FEBRUARY 2023**

Total **nonfarm payroll employment** rose by 311,000 in February, and the **unemployment rate** edged up to 3.6 percent, the U.S. Bureau of Labor Statistics reported today. Notable job gains occurred in leisure and hospitality, retail trade, government, and health care. Employment declined in information and in transportation and warehousing.

**Chart 1. Unemployment rate, seasonally adjusted, February 2021 – February 2023**



**Chart 2. Nonfarm payroll employment over-the-month change, seasonally adjusted, February 2021 – February 2023**



This news release presents statistics from two monthly surveys. The household survey measures labor force status, including unemployment, by demographic characteristics. The establishment survey measures nonfarm employment, hours, and earnings by industry. For more information about the concepts and statistical methodology used in these two surveys, see the Technical Note.

**Household Survey Data**

Both the **unemployment rate**, at 3.6 percent, and the number of **unemployed persons**, at 5.9 million, edged up in February. These measures have shown little net movement since early 2022. (See table A-1.)

Among the **major worker groups**, the unemployment rate for Hispanics (5.3 percent) increased in February. The unemployment rates for adult men (3.3 percent), adult women (3.2 percent), teenagers (11.1 percent), Whites (3.2 percent), Blacks (5.7 percent), and Asians (3.4 percent) changed little over the month. (See tables A-1, A-2, and A-3.)

The number of **job losers and persons who completed temporary jobs** increased by 223,000 in February to 2.8 million. (See table A-11.)

The number of persons **jobless less than 5 weeks** increased by 343,000 to 2.3 million in February, offsetting a decrease in the prior month. The number of **long-term unemployed** (those jobless for 27 weeks or more), at 1.1 million, changed little in February and accounted for 17.6 percent of the total unemployed. (See table A-12.)

In February, the **labor force participation rate** was little changed at 62.5 percent, and the **employment-population ratio** held at 60.2 percent. These measures have shown little net change since early 2022 and remain below their pre-pandemic February 2020 levels (63.3 percent and 61.1 percent, respectively). (See table A-1.)

The number of persons employed **part time for economic reasons**, at 4.1 million, was essentially unchanged in February. These individuals, who would have preferred full-time employment, were working part time because their hours had been reduced or they were unable to find full-time jobs. (See table A-8.)

The number of persons **not in the labor force who currently want a job** was little changed at 5.1 million in February. These individuals were not counted as unemployed because they were not actively looking for work during the 4 weeks preceding the survey or were unavailable to take a job. (See table A-1.)

Among those not in the labor force who wanted a job, the number of persons **marginally attached to the labor force** was little changed at 1.4 million in February. These individuals wanted and were available for work and had looked for a job sometime in the prior 12 months but had not looked for work in the 4 weeks preceding the survey. The number of **discouraged workers**, a subset of the marginally attached who believed that no jobs were available for them, also changed little over the month at 363,000. (See Summary table A.)

### **Establishment Survey Data**

Total **nonfarm payroll employment** increased by 311,000 in February, compared with the average monthly gain of 343,000 over the prior 6 months. In February, notable job gains occurred in leisure and hospitality, retail trade, government, and health care. Employment declined in information and in transportation and warehousing. (See table B-1.)

**Leisure and hospitality** added 105,000 jobs in February, similar to the average monthly gain of 91,000 over the prior 6 months. Food services and drinking places added 70,000 jobs in February, and employment continued to trend up in accommodation (+14,000). Employment in leisure and hospitality is below its pre-pandemic February 2020 level by 410,000, or 2.4 percent.

Employment in **retail trade** rose by 50,000 in February, reflecting a gain in general merchandise retailers (+39,000). Retail trade employment is little changed on net over the year.

**Government** employment increased by 46,000 in February, about the same as the average monthly gain of 44,000 over the prior 6 months. Employment in local government continued to trend up in February (+37,000). Overall, employment in government is below its pre-pandemic February 2020 level by 376,000, or 1.6 percent.

Employment in **professional and business services** continued to trend up in February (+45,000), with a gain of 12,000 in management, scientific, and technical consulting services. Employment in professional and business services had increased by an average of 35,000 per month over the prior 6 months.

**Health care** added 44,000 jobs in February, compared with the average monthly increase of 54,000 over the prior 6 months. In February, job growth occurred in hospitals (+19,000) and in nursing and residential care facilities (+14,000).

**Construction** employment grew by 24,000 in February, in line with the average monthly growth of 20,000 over the prior 6 months.

Employment in **social assistance** rose by 19,000 in February, similar to the average monthly gain of 22,000 over the prior 6 months.

In February, the **information** industry lost 25,000 jobs. Employment continued to trend down in motion picture and sound recording industries (-9,000) and in telecommunications (-3,000). Employment in information has decreased by 54,000 since November 2022.

**Transportation and warehousing** lost 22,000 jobs in February, including 9,000 in truck transportation. Employment in transportation and warehousing is down by 42,000 since October 2022.

Employment showed little change over the month in other major industries, including **mining, quarrying, and oil and gas extraction; manufacturing; wholesale trade; financial activities; and other services**.

In February, **average hourly earnings for all employees** on private nonfarm payrolls rose by 8 cents, or 0.2 percent, to \$33.09. Over the past 12 months, average hourly earnings have increased by 4.6 percent. In February, average hourly earnings of private-sector **production and nonsupervisory employees** rose by 13 cents, or 0.5 percent, to \$28.42. (See tables B-3 and B-8.)

The **average workweek for all employees** on private nonfarm payrolls edged down by 0.1 hour to 34.5 hours in February. In manufacturing, the average workweek edged down by 0.2 hour to 40.3 hours, and overtime edged down by 0.1 hour to 3.0 hours. The average workweek for **production and nonsupervisory employees** on private nonfarm payrolls decreased by 0.2 hour to 33.9 hours. (See tables B-2 and B-7.)

The change in total nonfarm payroll employment for December was revised down by 21,000, from +260,000 to +239,000, and the change for January was revised down by 13,000, from +517,000 to +504,000. With these revisions, employment gains in December and January combined were 34,000 lower than previously reported. (Monthly revisions result from additional reports received from

businesses and government agencies since the last published estimates and from the recalculation of seasonal factors.)

---

**The Employment Situation for March is scheduled to be released on Friday, April 7, 2023, at 8:30 a.m. (ET).**

# HOUSEHOLD DATA

## Summary table A. Household data, seasonally adjusted

[Numbers in thousands]

Category	Feb. 2022	Dec. 2022	Jan. 2023	Feb. 2023	Change from: Jan. 2023- Feb. 2023
<b>Employment status</b>					
Civilian noninstitutional population.....	263,324	264,844	265,962	266,112	150
Civilian labor force.....	163,862	164,966	165,832	166,251	419
Participation rate.....	62.2	62.3	62.4	62.5	0.1
Employed.....	157,590	159,244	160,138	160,315	177
Employment-population ratio.....	59.8	60.1	60.2	60.2	0.0
Unemployed.....	6,272	5,722	5,694	5,936	242
Unemployment rate.....	3.8	3.5	3.4	3.6	0.2
Not in labor force.....	99,463	99,878	100,130	99,861	-269
<b>Unemployment rates</b>					
Total, 16 years and over.....	3.8	3.5	3.4	3.6	0.2
Adult men (20 years and over).....	3.5	3.1	3.2	3.3	0.1
Adult women (20 years and over).....	3.6	3.2	3.1	3.2	0.1
Teenagers (16 to 19 years).....	10.3	10.4	10.3	11.1	0.8
White.....	3.3	3.0	3.1	3.2	0.1
Black or African American.....	6.6	5.7	5.4	5.7	0.3
Asian.....	3.0	2.4	2.8	3.4	0.6
Hispanic or Latino ethnicity.....	4.5	4.1	4.5	5.3	0.8
Total, 25 years and over.....	3.2	2.8	2.8	2.9	0.1
Less than a high school diploma.....	4.5	5.0	4.5	5.8	1.3
High school graduates, no college.....	4.4	3.6	3.7	3.6	-0.1
Some college or associate degree.....	3.7	2.9	2.9	3.2	0.3
Bachelor's degree and higher.....	2.2	1.9	2.0	2.0	0.0
<b>Reason for unemployment</b>					
Job losers and persons who completed temporary jobs.....	3,004	2,629	2,529	2,752	223
Job leavers.....	964	825	884	891	7
Reentrants.....	1,971	1,767	1,817	1,847	30
New entrants.....	429	497	531	515	-16
<b>Duration of unemployment</b>					
Less than 5 weeks.....	2,142	2,233	1,946	2,289	343
5 to 14 weeks.....	1,803	1,639	1,785	1,845	60
15 to 26 weeks.....	726	826	890	805	-85
27 weeks and over.....	1,691	1,069	1,111	1,057	-54
<b>Employed persons at work part time</b>					
Part time for economic reasons.....	4,137	3,878	4,050	4,067	17
Slack work or business conditions.....	2,726	2,648	2,685	2,840	155
Could only find part-time work.....	1,061	911	999	859	-140
Part time for noneconomic reasons.....	20,706	21,628	22,083	21,856	-227
<b>Persons not in the labor force</b>					
Marginally attached to the labor force.....	1,477	1,260	1,354	1,396	42
Discouraged workers.....	392	410	342	363	21

NOTE: Persons whose ethnicity is identified as Hispanic or Latino may be of any race. Detail for the seasonally adjusted data shown in this table will not necessarily add to totals because of the independent seasonal adjustment of the various series. Updated population controls are introduced annually with the release of January data.

**ESTABLISHMENT DATA**  
**Summary table B. Establishment data, seasonally adjusted**

Category	Feb. 2022	Dec. 2022	Jan. 2023 <sup>p</sup>	Feb. 2023 <sup>p</sup>
<b>EMPLOYMENT BY SELECTED INDUSTRY</b> (Over-the-month change, in thousands)				
Total nonfarm.....	904	239	504	311
Total private.....	897	232	386	265
Goods-producing.....	121	36	51	20
Mining and logging.....	5	4	3	0
Construction.....	79	26	35	24
Manufacturing.....	37	6	13	-4
Durable goods <sup>1</sup> .....	10	23	-1	0
Motor vehicles and parts.....	-23.9	9.5	-5.1	0.2
Nondurable goods.....	27	-17	14	-4
Private service-providing.....	776	196	335	245
Wholesale trade.....	27.3	9.6	8.9	11.1
Retail trade.....	168.8	26.7	33.9	50.1
Transportation and warehousing.....	74.1	0.3	16.3	-21.5
Utilities.....	1.0	-0.7	-2.1	-1.1
Information.....	7	-9	-20	-25
Financial activities.....	41	4	5	-1
Professional and business services <sup>1</sup> .....	142	23	53	45
Temporary help services.....	57.4	-55.0	15.3	6.8
Private education and health services <sup>1</sup> .....	109	71	107	74
Health care and social assistance.....	95.8	73.1	75.6	62.8
Leisure and hospitality.....	162	58	114	105
Other services.....	43	13	19	9
Government.....	7	7	118	46
<b>(3-month average change, in thousands)</b>				
Total nonfarm.....	612	284	344	351
Total private.....	598	253	282	294
<b>WOMEN AND PRODUCTION AND NONSUPERVISORY EMPLOYEES</b> AS A PERCENT OF ALL EMPLOYEES <sup>2</sup>				
Total nonfarm women employees.....	49.7	49.8	49.8	49.8
Total private women employees.....	48.2	48.4	48.4	48.4
Total private production and nonsupervisory employees.....	81.5	81.3	81.3	81.3
<b>HOURS AND EARNINGS</b> <b>ALL EMPLOYEES</b> <b>Total private</b>				
Average weekly hours.....	34.7	34.4	34.6	34.5
Average hourly earnings.....	\$31.63	\$32.92	\$33.01	\$33.09
Average weekly earnings.....	\$1,097.56	\$1,132.45	\$1,142.15	\$1,141.61
Index of aggregate weekly hours (2007=100) <sup>3</sup> .....	112.3	114.2	115.2	115.1
Over-the-month percent change.....	1.0	-0.1	0.9	-0.1
Index of aggregate weekly payrolls (2007=100) <sup>4</sup> .....	169.8	179.7	181.8	182.0
Over-the-month percent change.....	1.0	0.3	1.2	0.1
<b>DIFFUSION INDEX</b> (Over 1-month span) <sup>5</sup>				
Total private (250 industries).....	84.6	64.0	68.0	56.0
Manufacturing (72 industries).....	84.0	52.8	51.4	47.2

<sup>1</sup> Includes other industries, not shown separately.

<sup>2</sup> Data relate to production employees in mining and logging and manufacturing, construction employees in construction, and nonsupervisory employees in the service-providing industries.

<sup>3</sup> The indexes of aggregate weekly hours are calculated by dividing the current month's estimates of aggregate hours by the corresponding annual average aggregate hours.

<sup>4</sup> The indexes of aggregate weekly payrolls are calculated by dividing the current month's estimates of aggregate weekly payrolls by the corresponding annual average aggregate weekly payrolls.

<sup>5</sup> Figures are the percent of industries with employment increasing plus one-half of the industries with unchanged employment, where 50 percent indicates an equal balance between industries with increasing and decreasing employment.

p Preliminary

NOTE: Data have been revised to reflect March 2022 benchmark levels and updated seasonal adjustment factors.

# Frequently Asked Questions about Employment and Unemployment Estimates

## 1. Why are there two monthly measures of employment?

The household survey and establishment survey both produce sample-based estimates of employment, and both have strengths and limitations. The establishment survey employment series has a smaller margin of error on the measurement of month-to-month change than the household survey because of its much larger sample size. An over-the-month employment change of about 130,000 is statistically significant in the establishment survey, while the threshold for a statistically significant change in the household survey is about 600,000. However, the household survey has a more expansive scope than the establishment survey because it includes self-employed workers whose businesses are unincorporated, unpaid family workers, agricultural workers, and private household workers, who are excluded by the establishment survey. The household survey also provides estimates of employment for demographic groups. For more information on the differences between the two surveys, please visit [www.bls.gov/web/empsit/ces\\_cps\\_trends.htm](http://www.bls.gov/web/empsit/ces_cps_trends.htm).

## 2. Are undocumented immigrants counted in the surveys?

It is likely that both surveys include at least some undocumented immigrants. However, neither the establishment nor the household survey is designed to identify the legal status of workers. Therefore, it is not possible to determine how many are counted in either survey. The establishment survey does not collect data on the legal status of workers. The household survey does include questions which identify the foreign and native born, but it does not include questions about the legal status of the foreign born. Data on the foreign and native born are published each month in table A-7 of The Employment Situation news release.

## 3. Why does the establishment survey have revisions?

The establishment survey revises published estimates to improve its data series by incorporating additional information that was not available at the time of the initial publication of the estimates. The establishment survey revises its initial monthly estimates twice, in the immediately succeeding 2 months, to incorporate additional sample receipts from respondents in the survey and recalculated seasonal adjustment factors. For more information on the monthly revisions, please visit [www.bls.gov/web/empsit/cestn.htm#section7](http://www.bls.gov/web/empsit/cestn.htm#section7).

On an annual basis, the establishment survey incorporates a benchmark revision that re-anchors estimates to nearly complete employment counts available from unemployment insurance tax records. The benchmark helps to control for sampling and modeling errors in the estimates. For more information on the annual benchmark revision, please visit [www.bls.gov/web/empsit/cesbmart.htm](http://www.bls.gov/web/empsit/cesbmart.htm).

## 4. Does the establishment survey sample include small firms?

Yes; about 40 percent of the establishment survey sample is comprised of business establishments with fewer than 20 employees. The establishment survey sample is designed to maximize the reliability of the statewide total nonfarm employment estimate; firms from all states, size classes, and industries are appropriately sampled to achieve that goal.

## **5. Does the establishment survey account for employment from new businesses?**

Yes; monthly establishment survey estimates include an adjustment to account for the net employment change generated by business births and deaths. The adjustment comes from an econometric model that forecasts the monthly net jobs impact of business births and deaths based on the actual past values of the net impact that can be observed with a lag from the Quarterly Census of Employment and Wages. The establishment survey uses modeling rather than sampling for this purpose because the survey is not immediately able to bring new businesses into the sample. There is an unavoidable lag between the birth of a new firm and its appearance on the sampling frame and availability for selection. BLS adds new businesses to the survey twice a year.

## **6. Is the count of unemployed persons limited to just those people receiving unemployment insurance benefits?**

No; the estimate of unemployment is based on a monthly sample survey of households. All persons who are without jobs and are actively seeking and available to work are included among the unemployed. (People on temporary layoff are included even if they do not actively seek work.) There is no requirement or question relating to unemployment insurance benefits in the monthly survey.

## **7. Does the official unemployment rate exclude people who want a job but are not currently looking for work?**

Yes; however, there are separate estimates of persons outside the labor force who want a job, including those who are not currently looking because they believe no jobs are available (discouraged workers). In addition, alternative measures of labor underutilization (some of which include discouraged workers and other groups not officially counted as unemployed) are published each month in table A-15 of The Employment Situation news release. For more information about these alternative measures, please visit [www.bls.gov/cps/lfcharacteristics.htm#altmeasures](http://www.bls.gov/cps/lfcharacteristics.htm#altmeasures).

## **8. How can unusually severe weather affect employment and hours estimates?**

In the establishment survey, the reference period is the pay period that includes the 12th of the month. Unusually severe weather is more likely to have an impact on average weekly hours than on employment. Average weekly hours are estimated for paid time during the pay period, including pay for holidays, sick leave, or other time off. The impact of severe weather on hours estimates typically, but not always, results in a reduction in average weekly hours. For example, some employees may be off work for part of the pay period and not receive pay for the time missed, while some workers, such as those dealing with cleanup or repair, may work extra hours.

Typically, it is not possible to precisely quantify the effect of extreme weather on payroll employment estimates. In order for severe weather conditions to reduce employment estimates, employees have to be off work without pay for the entire pay period. Employees who receive pay for any part of the pay period, even 1 hour, are counted in the payroll employment figures. For more information on how often employees are paid, please visit [www.bls.gov/ces/publications/length-pay-period.htm](http://www.bls.gov/ces/publications/length-pay-period.htm).

In the household survey, the reference period is generally the calendar week that includes the 12th of the month. Persons who miss the entire week's work for weather-related events are counted as employed whether or not they are paid for the time off. The household survey collects data on the number of persons who had a job but were not at work due to bad weather. It also provides a measure of the number of persons who usually work full time but had reduced hours due to bad weather. Current and historical data are available on the household survey's most requested statistics page, please visit [data.bls.gov/cgi-bin/surveymost?ln](http://data.bls.gov/cgi-bin/surveymost?ln).



# Technical Note

This news release presents statistics from two major surveys, the Current Population Survey (CPS; household survey) and the Current Employment Statistics survey (CES; establishment survey). The household survey provides information on the labor force, employment, and unemployment that appears in the "A" tables, marked HOUSEHOLD DATA. It is a sample survey of about 60,000 eligible households conducted by the U.S. Census Bureau for the U.S. Bureau of Labor Statistics (BLS).

The establishment survey provides information on employment, hours, and earnings of employees on nonfarm payrolls; the data appear in the "B" tables, marked ESTABLISHMENT DATA. BLS collects these data each month from the payroll records of a sample of nonagricultural business establishments. Each month the CES program surveys about 122,000 businesses and government agencies, representing approximately 666,000 individual worksites, in order to provide detailed industry data on employment, hours, and earnings of workers on nonfarm payrolls. The active sample includes approximately one-third of all nonfarm payroll jobs.

For both surveys, the data for a given month relate to a particular week or pay period. In the household survey, the reference period is generally the calendar week that contains the 12th day of the month. In the establishment survey, the reference period is the pay period including the 12th, which may or may not correspond directly to the calendar week.

## Coverage, definitions, and differences between surveys

**Household survey.** The sample is selected to reflect the entire civilian noninstitutional population. Based on responses to a series of questions on work and job search activities, each person 16 years and over in a sample household is classified as employed, unemployed, or not in the labor force.

People are classified as *employed* if they did any work at all as paid employees during the reference week; worked in their own business, profession, or on their own farm; or worked without pay at least 15 hours in a family business or farm. People are also counted as employed if they were temporarily absent from their jobs because of illness, bad weather, vacation, labor-management disputes, or personal reasons.

People are classified as *unemployed* if they meet all of the following criteria: they had no employment during the reference week; they were available for work at that time; and they made specific active efforts to find employment sometime during the 4-week period ending with the reference week. Persons laid off from a job and expecting recall need not be looking for work to be counted as unemployed. The unemployment data derived from the household survey in no way depend upon the eligibility for or receipt of unemployment insurance benefits.

The *civilian labor force* is the sum of employed and unemployed persons. Those persons not classified as employed or unemployed are *not in the labor force*. The

*unemployment rate* is the number unemployed as a percent of the labor force. The *labor force participation rate* is the labor force as a percent of the population, and the *employment-population ratio* is the employed as a percent of the population. Additional information about the household survey can be found at [www.bls.gov/cps/documentation.htm](http://www.bls.gov/cps/documentation.htm).

**Establishment survey.** The sample establishments are drawn from private nonfarm businesses such as factories, offices, and stores, as well as from federal, state, and local government entities. *Employees on nonfarm payrolls* are those who worked or received pay for any part of the reference pay period, including persons on paid leave. Persons are counted in each job they hold. *Hours and earnings* data are produced for the private sector for all employees and for production and nonsupervisory employees. *Production and nonsupervisory* employees are defined as production and related employees in manufacturing and mining and logging, construction workers in construction, and non-supervisory employees in private service-providing industries.

Industries are classified on the basis of an establishment's principal activity in accordance with the 2022 version of the North American Industry Classification System. Additional information about the establishment survey can be found at [www.bls.gov/ces/](http://www.bls.gov/ces/).

**Differences in employment estimates.** The numerous conceptual and methodological differences between the household and establishment surveys result in important distinctions in the employment estimates derived from the surveys. Among these are:

- The household survey includes agricultural workers, self-employed workers whose businesses are unincorporated, unpaid family workers, and private household workers among the employed. These groups are excluded from the establishment survey.
- The household survey includes people on unpaid leave among the employed. The establishment survey does not.
- The household survey is limited to workers 16 years of age and older. The establishment survey is not limited by age.
- The household survey has no duplication of individuals, because individuals are counted only once, even if they hold more than one job. In the establishment survey, employees working at more than one job and thus appearing on more than one payroll are counted separately for each appearance.

## Seasonal adjustment

Over the course of a year, the size of the nation's labor force and the levels of employment and unemployment undergo regularly occurring fluctuations. These events may result from seasonal changes in weather, major holidays, and the opening and closing of schools. The effect of such seasonal variation can be very large.

Because these seasonal events follow a more or less regular pattern each year, their influence on the level of a series can be tempered by adjusting for regular seasonal variation. These adjustments make nonseasonal developments, such as declines in employment or increases in the participation of women in the labor force, easier to spot. For example, in the household survey, the large number of youth entering the labor force each June is likely to obscure any other changes that have taken place relative to May, making it difficult to determine if the level of economic activity has risen or declined. Similarly, in the establishment survey, payroll employment in education declines by about 20 percent at the end of the spring term and later rises with the start of the fall term, obscuring the underlying employment trends in the industry. Because seasonal employment changes at the end and beginning of the school year can be estimated, the statistics can be adjusted to make underlying employment patterns more discernable. The seasonally adjusted figures provide a more useful tool with which to analyze changes in month-to-month economic activity.

Many seasonally adjusted series are independently adjusted in both the household and establishment surveys. However, the adjusted series for many major estimates, such as total payroll employment, employment in most major sectors, total employment, and unemployment are computed by aggregating independently adjusted component series. For example, total unemployment is derived by summing the adjusted series for four major age-sex components; this differs from the unemployment estimate that would be obtained by directly adjusting the total or by combining the duration, reasons, or more detailed age categories. Percentage distributions of unemployment by reason and duration are derived from the sum of the independently seasonally adjusted component series and will not necessarily match calculations made using the seasonally adjusted total unemployment level. Additional information about seasonal adjustment in the household survey can be found at [www.bls.gov/cps/documentation.htm#sa](http://www.bls.gov/cps/documentation.htm#sa).

For both the household and establishment surveys, a concurrent seasonal adjustment methodology is used in which new seasonal factors are calculated each month using all relevant data, up to and including the data for the current month. In the household survey, new seasonal factors are used to adjust only the current month's data. In the establishment survey, however, new seasonal factors are used each month to adjust the three most recent monthly estimates. The prior 2 months are routinely revised to incorporate additional sample reports and recalculated seasonal adjustment factors. In both surveys, 5-year revisions to historical data are made once a year.

## Reliability of the estimates

Statistics based on the household and establishment surveys are subject to both sampling and nonsampling error. When a sample, rather than the entire population, is surveyed, there is a chance that the sample estimates may differ from the true population values they represent. The component of this difference that occurs because samples differ by chance is known as *sampling error*, and its variability is measured by the standard error of the estimate. There is about a 90-percent chance, or level of confidence, that an estimate based on a sample will differ by no more than 1.6 standard errors from the true population value because of sampling error. BLS analyses are generally conducted at the 90-percent level of confidence.

For example, the confidence interval for the monthly change in total nonfarm employment from the establishment survey is on the order of plus or minus 130,000. Suppose the estimate of nonfarm employment increases by 50,000 from one month to the next. The 90-percent confidence interval on the monthly change would range from -80,000 to +180,000 (50,000 +/- 130,000). These figures do not mean that the sample results are off by these magnitudes, but rather that there is about a 90-percent chance that the true over-the-month change lies within this interval. Since this range includes values of less than zero, we could not say with confidence that nonfarm employment had, in fact, increased that month. If, however, the reported nonfarm employment rise was 250,000, then all of the values within the 90-percent confidence interval would be greater than zero. In this case, it is likely (at least a 90-percent chance) that nonfarm employment had, in fact, risen that month. At an unemployment rate of around 6.0 percent, the 90-percent confidence interval for the monthly change in unemployment as measured by the household survey is about +/- 300,000, and for the monthly change in the unemployment rate it is about +/- 0.2 percentage point.

In general, estimates involving many individuals or establishments have lower standard errors (relative to the size of the estimate) than estimates which are based on a small number of observations. The precision of estimates also is improved when the data are cumulated over time, such as for quarterly and annual averages.

The household and establishment surveys are also affected by *nonsampling error*, which can occur for many reasons, including the failure to sample a segment of the population, inability to obtain information for all respondents in the sample, inability or unwillingness of respondents to provide correct information on a timely basis, mistakes made by respondents, and errors made in the collection or processing of the data.

For example, in the establishment survey, estimates for the most recent 2 months are based on incomplete returns; for this reason, these estimates are labeled preliminary in the tables. It is only after two successive revisions to a monthly estimate, when nearly all sample reports have been received, that the estimate is considered final.

Another major source of nonsampling error in the establishment survey is the inability to capture, on a timely

basis, employment generated by new firms. To correct for this systematic underestimation of employment growth, an estimation procedure with two components is used to account for business births. The first component excludes employment losses from business deaths from sample-based estimation in order to offset the missing employment gains from business births. This is incorporated into the sample-based estimation procedure by simply not reflecting sample units going out of business, but imputing to them the same employment trend as the other firms in the sample. This procedure accounts for most of the net birth/death employment.

The second component is an ARIMA time series model designed to estimate the residual net birth/death employment not accounted for by the imputation. The historical time series used to create and test the ARIMA model was derived from the unemployment insurance universe micro-level database, and reflects the actual residual net of births and deaths over the past 5 years.

The sample-based estimates from the establishment survey are adjusted once a year (on a lagged basis) to universe counts of payroll employment obtained from administrative records of the unemployment insurance program. The difference between the March sample-based employment estimates and the March universe counts is known as a benchmark revision, and serves as a rough proxy for total survey error. The new benchmarks also incorporate changes in the classification of industries. Over the past decade, absolute benchmark revisions for total nonfarm employment have averaged 0.1 percent, with a range from -0.3 percent to 0.3 percent.

#### **Other information**

If you are deaf, hard of hearing, or have a speech disability, please dial 7-1-1 to access telecommunications relay services.

# HOUSEHOLD DATA

## Table A-1. Employment status of the civilian population by sex and age

[Numbers in thousands]

Employment status, sex, and age	Not seasonally adjusted			Seasonally adjusted <sup>1</sup>					
	Feb. 2022	Jan. 2023	Feb. 2023	Feb. 2022	Oct. 2022	Nov. 2022	Dec. 2022	Jan. 2023	Feb. 2023
<b>TOTAL</b>									
Civilian noninstitutional population.....	263,324	265,962	266,112	263,324	264,535	264,708	264,844	265,962	266,112
Civilian labor force.....	163,725	165,070	166,178	163,862	164,646	164,527	164,966	165,832	166,251
Participation rate.....	62.2	62.1	62.4	62.2	62.2	62.2	62.3	62.4	62.5
Employed.....	156,942	158,692	159,713	157,590	158,593	158,527	159,244	160,138	160,315
Employment-population ratio.....	59.6	59.7	60.0	59.8	60.0	59.9	60.1	60.2	60.2
Unemployed.....	6,782	6,378	6,465	6,272	6,053	6,000	5,722	5,694	5,936
Unemployment rate.....	4.1	3.9	3.9	3.8	3.7	3.6	3.5	3.4	3.6
Not in labor force.....	99,600	100,892	99,934	99,463	99,890	100,181	99,878	100,130	99,861
Persons who currently want a job.....	5,299	5,466	4,987	5,392	5,681	5,528	5,176	5,314	5,103
<b>Men, 16 years and over</b>									
Civilian noninstitutional population.....	128,296	129,998	130,072	128,296	128,897	128,983	129,050	129,998	130,072
Civilian labor force.....	87,271	87,842	88,382	87,389	87,772	87,793	87,864	88,334	88,474
Participation rate.....	68.0	67.6	67.9	68.1	68.1	68.1	68.1	67.9	68.0
Employed.....	83,460	84,120	84,666	84,071	84,559	84,557	84,880	85,186	85,266
Employment-population ratio.....	65.1	64.7	65.1	65.5	65.6	65.6	65.8	65.5	65.6
Unemployed.....	3,812	3,723	3,717	3,318	3,212	3,236	2,984	3,147	3,208
Unemployment rate.....	4.4	4.2	4.2	3.8	3.7	3.7	3.4	3.6	3.6
Not in labor force.....	41,024	42,156	41,689	40,907	41,126	41,189	41,186	41,665	41,597
<b>Men, 20 years and over</b>									
Civilian noninstitutional population.....	119,669	121,283	121,346	119,669	120,225	120,301	120,360	121,283	121,346
Civilian labor force.....	84,390	84,872	85,363	84,264	84,606	84,525	84,694	85,084	85,210
Participation rate.....	70.5	70.0	70.3	70.4	70.4	70.3	70.4	70.2	70.2
Employed.....	80,918	81,524	82,048	81,293	81,776	81,698	82,033	82,324	82,407
Employment-population ratio.....	67.6	67.2	67.6	67.9	68.0	67.9	68.2	67.9	67.9
Unemployed.....	3,472	3,348	3,315	2,971	2,829	2,827	2,661	2,760	2,803
Unemployment rate.....	4.1	3.9	3.9	3.5	3.3	3.3	3.1	3.2	3.3
Not in labor force.....	35,280	36,412	35,983	35,405	35,619	35,776	35,666	36,199	36,136
<b>Women, 16 years and over</b>									
Civilian noninstitutional population.....	135,028	135,963	136,040	135,028	135,638	135,725	135,795	135,963	136,040
Civilian labor force.....	76,453	77,228	77,796	76,473	76,874	76,734	77,102	77,498	77,777
Participation rate.....	56.6	56.8	57.2	56.6	56.7	56.5	56.8	57.0	57.2
Employed.....	73,483	74,572	75,047	73,519	74,033	73,970	74,364	74,952	75,049
Employment-population ratio.....	54.4	54.8	55.2	54.4	54.6	54.5	54.8	55.1	55.2
Unemployed.....	2,971	2,656	2,749	2,954	2,841	2,764	2,738	2,546	2,728
Unemployment rate.....	3.9	3.4	3.5	3.9	3.7	3.6	3.6	3.3	3.5
Not in labor force.....	58,575	58,736	58,245	58,555	58,764	58,991	58,692	58,465	58,264
<b>Women, 20 years and over</b>									
Civilian noninstitutional population.....	126,631	127,546	127,613	126,631	127,204	127,283	127,345	127,546	127,613
Civilian labor force.....	73,650	74,308	74,823	73,482	73,752	73,532	73,930	74,379	74,606
Participation rate.....	58.2	58.3	58.6	58.0	58.0	57.8	58.1	58.3	58.5
Employed.....	70,931	71,921	72,354	70,810	71,218	71,088	71,531	72,104	72,189
Employment-population ratio.....	56.0	56.4	56.7	55.9	56.0	55.9	56.2	56.5	56.6
Unemployed.....	2,718	2,387	2,470	2,672	2,534	2,444	2,398	2,275	2,417
Unemployment rate.....	3.7	3.2	3.3	3.6	3.4	3.3	3.2	3.1	3.2
Not in labor force.....	52,981	53,238	52,790	53,149	53,452	53,750	53,416	53,167	53,007
<b>Both sexes, 16 to 19 years</b>									
Civilian noninstitutional population.....	17,024	17,133	17,153	17,024	17,107	17,124	17,139	17,133	17,153
Civilian labor force.....	5,685	5,890	5,992	6,116	6,288	6,469	6,343	6,368	6,435
Participation rate.....	33.4	34.4	34.9	35.9	36.8	37.8	37.0	37.2	37.5
Employed.....	5,094	5,247	5,311	5,487	5,598	5,740	5,680	5,710	5,719
Employment-population ratio.....	29.9	30.6	31.0	32.2	32.7	33.5	33.1	33.3	33.3
Unemployed.....	592	643	680	628	690	729	662	658	716
Unemployment rate.....	10.4	10.9	11.4	10.3	11.0	11.3	10.4	10.3	11.1
Not in labor force.....	11,339	11,242	11,161	10,908	10,819	10,655	10,796	10,765	10,718

<sup>1</sup> The population figures are not adjusted for seasonal variation; therefore, identical numbers appear in the unadjusted and seasonally adjusted columns.

NOTE: Updated population controls are introduced annually with the release of January data.

**HOUSEHOLD DATA**

**Table A-2. Employment status of the civilian population by race, sex, and age**

[Numbers in thousands]

Employment status, race, sex, and age	Not seasonally adjusted			Seasonally adjusted <sup>1</sup>					
	Feb. 2022	Jan. 2023	Feb. 2023	Feb. 2022	Oct. 2022	Nov. 2022	Dec. 2022	Jan. 2023	Feb. 2023
<b>WHITE</b>									
Civilian noninstitutional population.....	202,875	204,062	204,118	202,875	203,522	203,617	203,684	204,062	204,118
Civilian labor force.....	126,014	126,133	126,754	126,026	126,180	125,902	126,408	126,699	126,756
Participation rate.....	62.1	61.8	62.1	62.1	62.0	61.8	62.1	62.1	62.1
Employed.....	121,402	121,675	122,285	121,850	122,063	121,807	122,556	122,776	122,738
Employment-population ratio.....	59.8	59.6	59.9	60.1	60.0	59.8	60.2	60.2	60.1
Unemployed.....	4,612	4,458	4,470	4,175	4,117	4,094	3,852	3,924	4,017
Unemployment rate.....	3.7	3.5	3.5	3.3	3.3	3.3	3.0	3.1	3.2
Not in labor force.....	76,861	77,928	77,364	76,849	77,342	77,716	77,276	77,362	77,362
<b>Men, 20 years and over</b>									
Civilian labor force.....	65,987	65,973	66,225	65,833	66,032	65,759	66,045	66,118	66,083
Participation rate.....	70.5	69.8	70.1	70.3	70.3	70.0	70.3	70.0	69.9
Employed.....	63,583	63,596	63,842	63,843	64,026	63,767	64,189	64,210	64,125
Employment-population ratio.....	67.9	67.3	67.6	68.2	68.2	67.9	68.3	68.0	67.9
Unemployed.....	2,404	2,377	2,383	1,990	2,006	1,992	1,856	1,908	1,958
Unemployment rate.....	3.6	3.6	3.6	3.0	3.0	3.0	2.8	2.9	3.0
<b>Women, 20 years and over</b>									
Civilian labor force.....	55,501	55,601	55,932	55,326	55,340	55,174	55,461	55,637	55,733
Participation rate.....	57.3	57.2	57.6	57.2	57.0	56.8	57.1	57.3	57.4
Employed.....	53,737	53,977	54,309	53,591	53,691	53,562	53,918	54,093	54,142
Employment-population ratio.....	55.5	55.6	55.9	55.4	55.3	55.1	55.5	55.7	55.7
Unemployed.....	1,764	1,624	1,623	1,734	1,649	1,611	1,543	1,544	1,591
Unemployment rate.....	3.2	2.9	2.9	3.1	3.0	2.9	2.8	2.8	2.9
<b>Both sexes, 16 to 19 years</b>									
Civilian labor force.....	4,525	4,559	4,597	4,867	4,807	4,969	4,902	4,944	4,940
Participation rate.....	36.3	36.5	36.8	39.0	38.5	39.7	39.2	39.6	39.6
Employed.....	4,082	4,101	4,133	4,416	4,346	4,478	4,449	4,472	4,471
Employment-population ratio.....	32.7	32.9	33.1	35.4	34.8	35.8	35.5	35.8	35.8
Unemployed.....	444	458	463	451	462	491	453	472	469
Unemployment rate.....	9.8	10.0	10.1	9.3	9.6	9.9	9.2	9.5	9.5
<b>BLACK OR AFRICAN AMERICAN</b>									
Civilian noninstitutional population.....	34,004	34,487	34,519	34,004	34,237	34,272	34,301	34,487	34,519
Civilian labor force.....	21,003	21,544	21,770	21,139	21,247	21,365	21,418	21,697	21,893
Participation rate.....	61.8	62.5	63.1	62.2	62.1	62.3	62.4	62.9	63.4
Employed.....	19,566	20,335	20,488	19,751	19,988	20,139	20,189	20,535	20,654
Employment-population ratio.....	57.5	59.0	59.4	58.1	58.4	58.8	58.9	59.5	59.8
Unemployed.....	1,437	1,209	1,282	1,388	1,259	1,226	1,229	1,162	1,239
Unemployment rate.....	6.8	5.6	5.9	6.6	5.9	5.7	5.7	5.4	5.7
Not in labor force.....	13,001	12,943	12,749	12,865	12,990	12,907	12,883	12,790	12,626
<b>Men, 20 years and over</b>									
Civilian labor force.....	9,887	10,038	10,153	9,960	9,783	9,947	9,956	10,115	10,218
Participation rate.....	68.4	68.2	68.9	68.9	67.2	68.3	68.3	68.7	69.3
Employed.....	9,200	9,461	9,593	9,323	9,269	9,408	9,446	9,579	9,700
Employment-population ratio.....	63.7	64.2	65.1	64.5	63.7	64.6	64.8	65.0	65.8
Unemployed.....	687	577	560	637	514	539	510	535	518
Unemployment rate.....	6.9	5.8	5.5	6.4	5.3	5.4	5.1	5.3	5.1
<b>Women, 20 years and over</b>									
Civilian labor force.....	10,527	10,790	10,876	10,536	10,696	10,633	10,679	10,804	10,877
Participation rate.....	61.6	62.6	63.0	61.7	62.2	61.8	62.0	62.6	63.0
Employed.....	9,874	10,276	10,301	9,899	10,080	10,077	10,093	10,301	10,319
Employment-population ratio.....	57.8	59.6	59.7	58.0	58.6	58.6	58.6	59.7	59.8
Unemployed.....	653	514	575	637	616	556	586	504	558
Unemployment rate.....	6.2	4.8	5.3	6.0	5.8	5.2	5.5	4.7	5.1
<b>Both sexes, 16 to 19 years</b>									
Civilian labor force.....	589	716	741	644	768	785	784	778	797
Participation rate.....	23.8	28.5	29.5	26.1	30.8	31.4	31.4	31.0	31.7
Employed.....	491	599	594	529	639	654	650	655	635
Employment-population ratio.....	19.9	23.9	23.6	21.4	25.7	26.2	26.0	26.1	25.2
Unemployed.....	98	118	147	115	128	131	134	123	163
Unemployment rate.....	16.6	16.4	19.9	17.8	16.7	16.7	17.1	15.8	20.4

See footnotes at end of table.

**HOUSEHOLD DATA**

**Table A-2. Employment status of the civilian population by race, sex, and age — Continued**

[Numbers in thousands]

Employment status, race, sex, and age	Not seasonally adjusted			Seasonally adjusted <sup>1</sup>					
	Feb. 2022	Jan. 2023	Feb. 2023	Feb. 2022	Oct. 2022	Nov. 2022	Dec. 2022	Jan. 2023	Feb. 2023
<b>ASIAN</b>									
Civilian noninstitutional population.....	16,782	17,541	17,444	16,782	17,129	16,980	17,005	17,541	17,444
Civilian labor force.....	10,567	11,196	11,371	10,566	11,106	10,995	10,918	11,240	11,348
Participation rate.....	63.0	63.8	65.2	63.0	64.8	64.8	64.2	64.1	65.1
Employed.....	10,256	10,856	10,982	10,248	10,781	10,704	10,654	10,926	10,962
Employment-population ratio.....	61.1	61.9	63.0	61.1	62.9	63.0	62.7	62.3	62.8
Unemployed.....	311	340	389	318	325	291	265	313	386
Unemployment rate.....	2.9	3.0	3.4	3.0	2.9	2.6	2.4	2.8	3.4
Not in labor force.....	6,215	6,345	6,073	6,216	6,023	5,984	6,086	6,301	6,096

<sup>1</sup> The population figures are not adjusted for seasonal variation; therefore, identical numbers appear in the unadjusted and seasonally adjusted columns.

NOTE: Estimates for the above race groups will not sum to totals shown in table A-1 because data are not presented for all races. Updated population controls are introduced annually with the release of January data.

**HOUSEHOLD DATA**

**Table A-3. Employment status of the Hispanic or Latino population by sex and age**

[Numbers in thousands]

Employment status, sex, and age	Not seasonally adjusted			Seasonally adjusted <sup>1</sup>					
	Feb. 2022	Jan. 2023	Feb. 2023	Feb. 2022	Oct. 2022	Nov. 2022	Dec. 2022	Jan. 2023	Feb. 2023
<b>HISPANIC OR LATINO ETHNICITY</b>									
Civilian noninstitutional population.....	45,816	47,010	47,103	45,816	46,459	46,545	46,624	47,010	47,103
Civilian labor force.....	30,449	31,131	31,507	30,496	30,725	30,600	30,893	31,153	31,444
Participation rate.....	66.5	66.2	66.9	66.6	66.1	65.7	66.3	66.3	66.8
Employed.....	28,991	29,430	29,640	29,139	29,430	29,382	29,611	29,737	29,789
Employment-population ratio.....	63.3	62.6	62.9	63.6	63.3	63.1	63.5	63.3	63.2
Unemployed.....	1,458	1,701	1,866	1,357	1,295	1,218	1,281	1,416	1,655
Unemployment rate.....	4.8	5.5	5.9	4.5	4.2	4.0	4.1	4.5	5.3
Not in labor force.....	15,367	15,879	15,597	15,319	15,734	15,944	15,731	15,857	15,659
<b>Men, 20 years and over</b>									
Civilian labor force.....	16,678	16,834	16,951	16,702	16,653	16,526	16,725	16,795	16,882
Participation rate.....	80.3	78.8	79.2	80.4	79.1	78.4	79.2	78.6	78.8
Employed.....	15,964	15,875	15,912	16,081	16,000	15,925	16,047	16,073	16,036
Employment-population ratio.....	76.9	74.3	74.3	77.5	76.0	75.5	76.0	75.2	74.9
Unemployed.....	713	958	1,038	622	653	601	677	722	846
Unemployment rate.....	4.3	5.7	6.1	3.7	3.9	3.6	4.0	4.3	5.0
<b>Women, 20 years and over</b>									
Civilian labor force.....	12,425	13,024	13,120	12,403	12,655	12,637	12,785	13,024	13,085
Participation rate.....	59.7	61.1	61.5	59.6	59.9	59.7	60.3	61.1	61.3
Employed.....	11,809	12,391	12,465	11,808	12,185	12,179	12,307	12,447	12,460
Employment-population ratio.....	56.7	58.1	58.4	56.7	57.7	57.6	58.1	58.4	58.4
Unemployed.....	616	633	655	595	469	458	478	577	626
Unemployment rate.....	5.0	4.9	5.0	4.8	3.7	3.6	3.7	4.4	4.8
<b>Both sexes, 16 to 19 years</b>									
Civilian labor force.....	1,346	1,274	1,436	1,391	1,417	1,438	1,383	1,334	1,477
Participation rate.....	31.8	29.4	33.1	32.9	33.0	33.4	32.0	30.8	34.0
Employed.....	1,218	1,164	1,262	1,250	1,245	1,279	1,257	1,217	1,294
Employment-population ratio.....	28.8	26.9	29.1	29.5	29.0	29.7	29.1	28.1	29.8
Unemployed.....	129	110	173	141	173	159	126	116	183
Unemployment rate.....	9.6	8.7	12.1	10.1	12.2	11.0	9.1	8.7	12.4

<sup>1</sup> The population figures are not adjusted for seasonal variation; therefore, identical numbers appear in the unadjusted and seasonally adjusted columns.

NOTE: Persons whose ethnicity is identified as Hispanic or Latino may be of any race. Updated population controls are introduced annually with the release of January data.

**HOUSEHOLD DATA**

**Table A-4. Employment status of the civilian population 25 years and over by educational attainment**

[Numbers in thousands]

Educational attainment	Not seasonally adjusted			Seasonally adjusted					
	Feb. 2022	Jan. 2023	Feb. 2023	Feb. 2022	Oct. 2022	Nov. 2022	Dec. 2022	Jan. 2023	Feb. 2023
<b>Less than a high school diploma</b>									
Civilian labor force.....	8,647	8,829	8,850	8,976	9,141	8,901	8,885	8,814	9,165
Participation rate.....	45.2	46.1	46.7	46.9	46.6	45.6	45.6	46.0	48.3
Employed.....	8,141	8,267	8,198	8,574	8,574	8,506	8,443	8,417	8,629
Employment-population ratio.....	42.5	43.1	43.2	44.8	43.7	43.5	43.4	43.9	45.5
Unemployed.....	507	562	652	402	567	395	442	397	536
Unemployment rate.....	5.9	6.4	7.4	4.5	6.2	4.4	5.0	4.5	5.8
<b>High school graduates, no college<sup>1</sup></b>									
Civilian labor force.....	36,577	35,983	35,852	36,550	35,070	35,192	35,605	36,189	35,850
Participation rate.....	56.2	56.1	56.0	56.2	55.9	55.7	56.2	56.4	56.0
Employed.....	34,793	34,457	34,441	34,935	33,692	33,816	34,339	34,836	34,574
Employment-population ratio.....	53.5	53.7	53.8	53.7	53.7	53.5	54.2	54.3	54.0
Unemployed.....	1,784	1,526	1,411	1,615	1,378	1,377	1,266	1,353	1,276
Unemployment rate.....	4.9	4.2	3.9	4.4	3.9	3.9	3.6	3.7	3.6
<b>Some college or associate degree</b>									
Civilian labor force.....	35,337	35,952	35,869	35,423	35,806	35,880	35,789	36,082	35,962
Participation rate.....	63.5	63.2	63.4	63.7	62.7	62.9	62.7	63.5	63.6
Employed.....	33,931	34,859	34,594	34,122	34,734	34,748	34,735	35,046	34,796
Employment-population ratio.....	61.0	61.3	61.2	61.4	60.8	60.9	60.8	61.7	61.5
Unemployed.....	1,406	1,093	1,275	1,301	1,071	1,133	1,054	1,036	1,167
Unemployment rate.....	4.0	3.0	3.6	3.7	3.0	3.2	2.9	2.9	3.2
<b>Bachelor's degree and higher<sup>2</sup></b>									
Civilian labor force.....	62,734	62,863	63,848	62,017	63,312	63,041	63,150	62,854	63,140
Participation rate.....	73.3	72.7	73.1	72.5	72.7	72.5	72.7	72.7	72.3
Employed.....	61,375	61,526	62,530	60,679	62,089	61,781	61,947	61,591	61,858
Employment-population ratio.....	71.7	71.1	71.6	70.9	71.3	71.1	71.3	71.2	70.9
Unemployed.....	1,359	1,338	1,318	1,338	1,223	1,260	1,203	1,263	1,282
Unemployment rate.....	2.2	2.1	2.1	2.2	1.9	2.0	1.9	2.0	2.0

<sup>1</sup> Includes persons with a high school diploma or equivalent.

<sup>2</sup> Includes persons with bachelor's, master's, professional, and doctoral degrees.

NOTE: Detail for the seasonally adjusted data shown in this table will not necessarily add to totals for those 25 years and over because of the independent seasonal adjustment of the various series. Updated population controls are introduced annually with the release of January data.



**HOUSEHOLD DATA**

**Table A-5. Employment status of the civilian population 18 years and over by veteran status, period of service, and sex, not seasonally adjusted**

[Numbers in thousands]

Employment status, veteran status, and period of service	Total		Men		Women	
	Feb. 2022	Feb. 2023	Feb. 2022	Feb. 2023	Feb. 2022	Feb. 2023
<b>VETERANS, 18 years and over</b>						
Civilian noninstitutional population.....	18,469	18,002	16,448	15,967	2,021	2,035
Civilian labor force.....	8,971	8,683	7,770	7,600	1,202	1,083
Participation rate.....	48.6	48.2	47.2	47.6	59.5	53.2
Employed.....	8,686	8,462	7,540	7,393	1,146	1,069
Employment-population ratio.....	47.0	47.0	45.8	46.3	56.7	52.5
Unemployed.....	285	221	230	207	56	14
Unemployment rate.....	3.2	2.5	3.0	2.7	4.6	1.3
Not in labor force.....	9,498	9,319	8,678	8,367	819	952
<b>Gulf War-era II veterans</b>						
Civilian noninstitutional population.....	4,814	4,989	3,911	4,070	904	919
Civilian labor force.....	3,840	4,004	3,178	3,381	662	623
Participation rate.....	79.8	80.3	81.3	83.1	73.3	67.8
Employed.....	3,718	3,894	3,088	3,283	630	611
Employment-population ratio.....	77.2	78.0	79.0	80.7	69.8	66.5
Unemployed.....	122	111	90	98	32	12
Unemployment rate.....	3.2	2.8	2.8	2.9	4.8	2.0
Not in labor force.....	974	985	733	689	241	295
<b>Gulf War-era I veterans</b>						
Civilian noninstitutional population.....	3,264	2,947	2,810	2,510	453	437
Civilian labor force.....	2,433	2,148	2,104	1,831	329	317
Participation rate.....	74.6	72.9	74.9	72.9	72.6	72.5
Employed.....	2,376	2,098	2,063	1,781	314	317
Employment-population ratio.....	72.8	71.2	73.4	70.9	69.1	72.5
Unemployed.....	57	50	42	50	16	0
Unemployment rate.....	2.3	2.3	2.0	2.7	4.7	0.0
Not in labor force.....	831	799	706	679	124	120
<b>World War II, Korean War, and Vietnam-era veterans</b>						
Civilian noninstitutional population.....	6,345	6,077	6,093	5,820	252	257
Civilian labor force.....	985	820	943	815	42	6
Participation rate.....	15.5	13.5	15.5	14.0	16.7	2.1
Employed.....	939	809	901	803	38	6
Employment-population ratio.....	14.8	13.3	14.8	13.8	15.1	2.1
Unemployed.....	46	11	42	11	4	0
Unemployment rate.....	4.7	1.4	4.5	1.4	-	-
Not in labor force.....	5,360	5,257	5,150	5,005	210	251
<b>Veterans of other service periods</b>						
Civilian noninstitutional population.....	4,046	3,989	3,634	3,567	412	422
Civilian labor force.....	1,713	1,711	1,545	1,574	168	137
Participation rate.....	42.3	42.9	42.5	44.1	40.8	32.5
Employed.....	1,652	1,662	1,488	1,526	164	136
Employment-population ratio.....	40.8	41.7	41.0	42.8	39.8	32.2
Unemployed.....	61	49	56	47	4	1
Unemployment rate.....	3.5	2.8	3.7	3.0	2.5	0.9
Not in labor force.....	2,333	2,278	2,089	1,993	244	285
<b>NONVETERANS, 18 years and over</b>						
Civilian noninstitutional population.....	235,694	238,871	107,147	109,483	128,548	129,389
Civilian labor force.....	152,438	155,307	78,383	79,747	74,055	75,560
Participation rate.....	64.7	65.0	73.2	72.8	57.6	58.4
Employed.....	146,175	149,259	74,906	76,361	71,269	72,898
Employment-population ratio.....	62.0	62.5	69.9	69.7	55.4	56.3
Unemployed.....	6,263	6,049	3,477	3,387	2,786	2,662
Unemployment rate.....	4.1	3.9	4.4	4.2	3.8	3.5
Not in labor force.....	83,256	83,564	28,763	29,735	54,493	53,829

NOTE: Veterans served on active duty in the U.S. Armed Forces and were not on active duty at the time of the survey. Nonveterans never served on active duty in the U.S. Armed Forces. Veterans could have served anywhere in the world during these periods of service: Gulf War era II (September 2001-present), Gulf War era I (August 1990-August 2001), Vietnam era (August 1964-April 1975), Korean War (July 1950-January 1955), World War II (December 1941-December 1946), and other service periods (all other time periods). Veterans who served in more than one wartime period are classified only in the most recent one. Veterans who served during one of the selected wartime periods and another period are classified only in the wartime period. Dash indicates no data or data that do not meet publication criteria (values not shown where base is less than 75,000).

**HOUSEHOLD DATA**

**Table A-6. Employment status of the civilian population by sex, age, and disability status, not seasonally adjusted**

[Numbers in thousands]

Employment status, sex, and age	Persons with a disability		Persons with no disability	
	Feb. 2022	Feb. 2023	Feb. 2022	Feb. 2023
<b>TOTAL, 16 years and over</b>				
Civilian noninstitutional population.....	32,014	32,611	231,310	233,501
Civilian labor force.....	7,250	7,786	156,474	158,392
Participation rate.....	22.6	23.9	67.6	67.8
Employed.....	6,613	7,214	150,329	152,498
Employment-population ratio.....	20.7	22.1	65.0	65.3
Unemployed.....	637	572	6,145	5,894
Unemployment rate.....	8.8	7.3	3.9	3.7
Not in labor force.....	24,764	24,825	74,835	75,109
<b>Men, 16 to 64 years</b>				
Civilian labor force.....	3,079	3,256	78,013	79,093
Participation rate.....	38.0	41.9	82.4	82.2
Employed.....	2,780	3,007	74,747	75,778
Employment-population ratio.....	34.3	38.7	78.9	78.7
Unemployed.....	299	249	3,266	3,316
Unemployment rate.....	9.7	7.6	4.2	4.2
Not in labor force.....	5,025	4,516	16,702	17,162
<b>Women, 16 to 64 years</b>				
Civilian labor force.....	2,905	3,245	68,898	69,610
Participation rate.....	35.3	38.6	71.5	72.4
Employed.....	2,624	2,966	66,316	67,277
Employment-population ratio.....	31.9	35.3	68.8	70.0
Unemployed.....	281	279	2,582	2,333
Unemployment rate.....	9.7	8.6	3.7	3.4
Not in labor force.....	5,330	5,164	27,444	26,508
<b>Both sexes, 65 years and over</b>				
Civilian labor force.....	1,266	1,285	9,563	9,688
Participation rate.....	8.1	7.8	23.8	23.6
Employed.....	1,209	1,241	9,265	9,443
Employment-population ratio.....	7.7	7.6	23.0	23.0
Unemployed.....	57	44	298	245
Unemployment rate.....	4.5	3.4	3.1	2.5
Not in labor force.....	14,409	15,146	30,689	31,439

NOTE: A person with a disability has at least one of the following conditions: is deaf or has serious difficulty hearing; is blind or has serious difficulty seeing even when wearing glasses; has serious difficulty concentrating, remembering, or making decisions because of a physical, mental, or emotional condition; has serious difficulty walking or climbing stairs; has difficulty dressing or bathing; or has difficulty doing errands alone such as visiting a doctor's office or shopping because of a physical, mental, or emotional condition. Updated population controls are introduced annually with the release of January data.

**HOUSEHOLD DATA**

**Table A-7. Employment status of the civilian population by nativity and sex, not seasonally adjusted**

[Numbers in thousands]

Employment status and nativity	Total		Men		Women	
	Feb. 2022	Feb. 2023	Feb. 2022	Feb. 2023	Feb. 2022	Feb. 2023
<b>Foreign born, 16 years and over</b>						
Civilian noninstitutional population.....	44,718	46,470	21,761	22,743	22,957	23,727
Civilian labor force.....	29,229	30,827	16,758	17,464	12,471	13,363
Participation rate.....	65.4	66.3	77.0	76.8	54.3	56.3
Employed.....	28,138	29,518	16,173	16,705	11,965	12,813
Employment-population ratio.....	62.9	63.5	74.3	73.4	52.1	54.0
Unemployed.....	1,092	1,309	585	759	506	550
Unemployment rate.....	3.7	4.2	3.5	4.3	4.1	4.1
Not in labor force.....	15,489	15,643	5,003	5,279	10,486	10,364
<b>Native born, 16 years and over</b>						
Civilian noninstitutional population.....	218,606	219,642	106,534	107,328	112,071	112,314
Civilian labor force.....	134,495	135,351	70,513	70,919	63,982	64,433
Participation rate.....	61.5	61.6	66.2	66.1	57.1	57.4
Employed.....	128,805	130,194	67,287	67,961	61,518	62,234
Employment-population ratio.....	58.9	59.3	63.2	63.3	54.9	55.4
Unemployed.....	5,691	5,157	3,226	2,958	2,464	2,199
Unemployment rate.....	4.2	3.8	4.6	4.2	3.9	3.4
Not in labor force.....	84,110	84,291	36,021	36,410	48,089	47,881

NOTE: The foreign born are those residing in the United States who were not U.S. citizens at birth. That is, they were born outside the United States or one of its outlying areas such as Puerto Rico or Guam, to parents neither of whom was a U.S. citizen. The native born are persons who were born in the United States or one of its outlying areas such as Puerto Rico or Guam or who were born abroad of at least one parent who was a U.S. citizen. Updated population controls are introduced annually with the release of January data.

**HOUSEHOLD DATA**

**Table A-8. Employed persons by class of worker and part-time status**

[In thousands]

Category	Not seasonally adjusted			Seasonally adjusted					
	Feb. 2022	Jan. 2023	Feb. 2023	Feb. 2022	Oct. 2022	Nov. 2022	Dec. 2022	Jan. 2023	Feb. 2023
<b>CLASS OF WORKER</b>									
Agriculture and related industries.....	2,262	2,145	2,251	2,363	2,206	2,228	2,311	2,245	2,346
Wage and salary workers <sup>1</sup> .....	1,457	1,428	1,456	1,524	1,495	1,492	1,496	1,485	1,521
Self-employed workers, unincorporated.....	771	682	755	800	692	715	791	720	781
Unpaid family workers.....	34	35	40	-	-	-	-	-	-
Nonagricultural industries.....	154,681	156,547	157,461	155,033	156,570	156,344	156,818	157,645	157,743
Wage and salary workers <sup>1</sup> .....	145,611	147,532	148,238	146,140	147,109	147,381	147,886	148,822	148,723
Government.....	21,375	21,968	21,951	20,928	21,211	21,084	21,683	21,548	21,501
Private industries.....	124,235	125,564	126,287	124,966	126,102	126,468	126,169	126,981	126,967
Private households.....	572	669	592	-	-	-	-	-	-
Other industries.....	123,663	124,895	125,696	124,266	125,460	125,819	125,538	126,248	126,261
Self-employed workers, unincorporated.....	9,002	8,952	9,173	9,185	9,261	8,970	9,036	9,217	9,338
Unpaid family workers.....	69	63	50	-	-	-	-	-	-
<b>PERSONS AT WORK PART TIME<sup>2</sup></b>									
<b>  All industries</b>									
Part time for economic reasons <sup>3</sup> .....	4,349	4,498	4,285	4,137	3,664	3,688	3,878	4,050	4,067
Slack work or business conditions.....	2,946	3,114	3,079	2,726	2,535	2,546	2,648	2,685	2,840
Could only find part-time work.....	1,089	993	868	1,061	867	826	911	999	859
Part time for noneconomic reasons <sup>4</sup> .....	21,301	22,096	22,494	20,706	21,297	21,226	21,628	22,083	21,856
<b>    Nonagricultural industries</b>									
Part time for economic reasons <sup>3</sup> .....	4,278	4,401	4,146	4,103	3,578	3,623	3,810	3,959	3,964
Slack work or business conditions.....	2,900	3,057	2,975	2,688	2,487	2,497	2,611	2,646	2,750
Could only find part-time work.....	1,084	983	850	1,054	862	819	892	988	842
Part time for noneconomic reasons <sup>4</sup> .....	20,894	21,683	22,074	20,316	20,950	20,844	21,211	21,674	21,453

<sup>1</sup> Includes self-employed workers whose businesses are incorporated.

<sup>2</sup> Refers to those who worked 1 to 34 hours during the survey reference week and excludes employed persons who were absent from their jobs for the entire week.

<sup>3</sup> Refers to those who worked 1 to 34 hours during the reference week for an economic reason such as slack work or unfavorable business conditions, inability to find full-time work, or seasonal declines in demand.

<sup>4</sup> Refers to persons who usually work part time for noneconomic reasons such as childcare problems, family or personal obligations, school or training, retirement or Social Security limits on earnings, and other reasons. This excludes persons who usually work full time but worked only 1 to 34 hours during the reference week for reasons such as vacations, holidays, illness, and bad weather.

- Data not available.

NOTE: Detail for the seasonally adjusted data shown in this table will not necessarily add to totals because of the independent seasonal adjustment of the various series. Updated population controls are introduced annually with the release of January data.

# HOUSEHOLD DATA

## Table A-9. Selected employment indicators

[Numbers in thousands]

Characteristic	Not seasonally adjusted			Seasonally adjusted					
	Feb. 2022	Jan. 2023	Feb. 2023	Feb. 2022	Oct. 2022	Nov. 2022	Dec. 2022	Jan. 2023	Feb. 2023
<b>AGE AND SEX</b>									
Total, 16 years and over.....	156,942	158,692	159,713	157,590	158,593	158,527	159,244	160,138	160,315
16 to 19 years.....	5,094	5,247	5,311	5,487	5,598	5,740	5,680	5,710	5,719
16 to 17 years.....	2,082	2,033	1,992	2,284	2,200	2,241	2,371	2,265	2,200
18 to 19 years.....	3,012	3,215	3,319	3,212	3,387	3,500	3,312	3,462	3,534
20 years and over.....	151,849	153,444	154,401	152,102	152,994	152,787	153,564	154,428	154,597
20 to 24 years.....	13,609	14,336	14,638	13,831	13,780	13,759	13,834	14,705	14,831
25 years and over.....	138,240	139,108	139,763	138,445	139,160	138,845	139,477	139,834	139,939
25 to 54 years.....	100,923	101,921	102,681	101,159	101,509	101,400	101,848	102,366	102,838
25 to 34 years.....	35,052	35,343	35,751	35,151	35,296	35,073	35,066	35,594	35,799
35 to 44 years.....	34,443	34,904	35,179	34,536	34,611	34,777	34,983	35,010	35,243
45 to 54 years.....	31,427	31,674	31,751	31,471	31,601	31,550	31,799	31,762	31,796
55 years and over.....	37,317	37,188	37,082	37,287	37,651	37,446	37,630	37,468	37,100
Men, 16 years and over.....	83,460	84,120	84,666	84,071	84,559	84,557	84,880	85,186	85,266
16 to 19 years.....	2,542	2,596	2,618	2,778	2,783	2,859	2,847	2,862	2,859
16 to 17 years.....	1,014	907	912	1,122	1,034	1,059	1,109	1,039	1,020
18 to 19 years.....	1,528	1,689	1,706	1,661	1,752	1,809	1,748	1,838	1,851
20 years and over.....	80,918	81,524	82,048	81,293	81,776	81,698	82,033	82,324	82,407
20 to 24 years.....	6,891	7,144	7,355	7,055	7,144	7,071	7,080	7,354	7,484
25 years and over.....	74,027	74,379	74,693	74,444	74,548	74,451	74,767	75,036	75,070
25 to 54 years.....	53,898	54,269	54,765	54,228	54,106	54,119	54,370	54,708	55,033
25 to 34 years.....	18,667	18,717	19,087	18,794	18,701	18,548	18,629	18,916	19,167
35 to 44 years.....	18,566	18,752	18,859	18,691	18,649	18,761	18,798	18,896	18,965
45 to 54 years.....	16,665	16,801	16,819	16,743	16,756	16,810	16,943	16,896	16,901
55 years and over.....	20,129	20,110	19,928	20,216	20,442	20,332	20,396	20,328	20,037
Women, 16 years and over.....	73,483	74,572	75,047	73,519	74,033	73,970	74,364	74,952	75,049
16 to 19 years.....	2,551	2,651	2,693	2,710	2,815	2,881	2,833	2,848	2,860
16 to 17 years.....	1,068	1,125	1,080	1,162	1,167	1,182	1,262	1,226	1,179
18 to 19 years.....	1,483	1,526	1,614	1,551	1,635	1,691	1,564	1,624	1,683
20 years and over.....	70,931	71,921	72,354	70,810	71,218	71,088	71,531	72,104	72,189
20 to 24 years.....	6,718	7,192	7,283	6,776	6,636	6,688	6,755	7,351	7,347
25 years and over.....	64,213	64,729	65,070	64,001	64,612	64,394	64,711	64,798	64,868
25 to 54 years.....	47,025	47,651	47,916	46,930	47,403	47,281	47,477	47,658	47,805
25 to 34 years.....	16,385	16,627	16,664	16,358	16,596	16,525	16,436	16,678	16,633
35 to 44 years.....	15,878	16,152	16,320	15,845	15,963	16,016	16,185	16,114	16,278
45 to 54 years.....	14,762	14,873	14,932	14,728	14,845	14,740	14,857	14,866	14,895
55 years and over.....	17,188	17,078	17,154	17,071	17,209	17,113	17,233	17,140	17,063
<b>MARITAL STATUS</b>									
Married men, spouse present <sup>1</sup> .....	45,572	45,927	46,414	45,571	45,624	45,988	46,209	46,119	46,387
Married women, spouse present <sup>1</sup> .....	36,146	36,569	37,152	35,916	36,179	36,322	36,472	36,490	36,883
Women who maintain families <sup>2</sup> .....	9,958	10,154	9,696	-	-	-	-	-	-
<b>FULL- OR PART-TIME STATUS</b>									
Full-time workers <sup>3</sup> .....	130,712	131,175	132,173	131,783	132,179	132,300	132,299	132,577	133,184
Part-time workers <sup>4</sup> .....	26,230	27,516	27,540	25,811	26,413	26,115	26,794	27,400	27,089
<b>MULTIPLE JOBHOLDERS</b>									
Total multiple jobholders.....	7,557	7,877	8,041	7,430	7,519	7,676	8,046	8,001	7,904
Percent of total employed.....	4.8	5.0	5.0	4.7	4.7	4.8	5.1	5.0	4.9
<b>SELF-EMPLOYMENT</b>									
Self-employed workers, incorporated.....	6,291	6,560	6,435	-	-	-	-	-	-
Self-employed workers, unincorporated.....	9,772	9,635	9,928	9,985	9,953	9,686	9,827	9,937	10,119

<sup>1</sup> Beginning with data for January 2020, refers to persons in both opposite-sex and same-sex married couples. Prior to January 2020, referred to persons in opposite-sex married couples only.

<sup>2</sup> Beginning with data for January 2020, refers to female householders residing with one or more family members, but not a spouse of either sex. Prior to January 2020, referred to female householders residing with one or more family members, but not an opposite-sex spouse.

<sup>3</sup> Employed full-time workers are persons who usually work 35 hours or more per week.

<sup>4</sup> Employed part-time workers are persons who usually work less than 35 hours per week.

- Data not available.

NOTE: Detail for the seasonally adjusted data shown in this table will not necessarily add to totals because of the independent seasonal adjustment of the various series. Updated population controls are introduced annually with the release of January data.

# HOUSEHOLD DATA

## Table A-10. Selected unemployment indicators, seasonally adjusted

Characteristic	Number of unemployed persons (in thousands)			Unemployment rates					
	Feb. 2022	Jan. 2023	Feb. 2023	Feb. 2022	Oct. 2022	Nov. 2022	Dec. 2022	Jan. 2023	Feb. 2023
<b>AGE AND SEX</b>									
Total, 16 years and over.....	6,272	5,694	5,936	3.8	3.7	3.6	3.5	3.4	3.6
16 to 19 years.....	628	658	716	10.3	11.0	11.3	10.4	10.3	11.1
16 to 17 years.....	256	277	216	10.1	9.8	11.5	8.4	10.9	9.0
18 to 19 years.....	362	384	488	10.1	11.9	11.3	12.2	10.0	12.1
20 years and over.....	5,644	5,035	5,219	3.6	3.4	3.3	3.2	3.2	3.3
20 to 24 years.....	1,121	1,116	1,103	7.5	6.9	6.8	7.3	7.1	6.9
25 years and over.....	4,641	4,020	4,235	3.2	3.0	3.0	2.8	2.8	2.9
25 to 54 years.....	3,477	3,136	3,242	3.3	3.2	3.2	2.9	3.0	3.1
25 to 34 years.....	1,502	1,459	1,447	4.1	4.0	4.1	3.8	3.9	3.9
35 to 44 years.....	1,175	927	936	3.3	2.9	2.6	2.4	2.6	2.6
45 to 54 years.....	799	750	858	2.5	2.8	2.7	2.3	2.3	2.6
55 years and over.....	1,130	874	957	2.9	2.4	2.5	2.7	2.3	2.5
Men, 16 years and over.....	3,318	3,147	3,208	3.8	3.7	3.7	3.4	3.6	3.6
16 to 19 years.....	347	387	405	11.1	12.1	12.5	10.2	11.9	12.4
16 to 17 years.....	111	183	131	9.0	11.7	15.6	9.3	15.0	11.4
18 to 19 years.....	234	207	275	12.4	12.6	10.9	11.3	10.1	12.9
20 years and over.....	2,971	2,760	2,803	3.5	3.3	3.3	3.1	3.2	3.3
20 to 24 years.....	600	620	646	7.8	7.2	7.7	7.3	7.8	7.9
25 years and over.....	2,464	2,225	2,251	3.2	2.9	2.9	2.8	2.9	2.9
25 to 54 years.....	1,794	1,722	1,738	3.2	3.1	3.0	2.8	3.1	3.1
25 to 34 years.....	756	856	773	3.9	3.9	4.1	3.9	4.3	3.9
35 to 44 years.....	636	484	532	3.3	2.6	2.4	2.3	2.5	2.7
45 to 54 years.....	401	382	434	2.3	2.8	2.6	2.1	2.2	2.5
55 years and over.....	670	504	512	3.2	2.3	2.6	2.7	2.4	2.5
Women, 16 years and over.....	2,954	2,546	2,728	3.9	3.7	3.6	3.6	3.3	3.5
16 to 19 years.....	281	271	311	9.4	9.8	10.0	10.7	8.7	9.8
16 to 17 years.....	145	93	86	11.1	8.0	7.4	7.6	7.1	6.8
18 to 19 years.....	128	177	213	7.6	11.1	11.7	13.2	9.8	11.2
20 years and over.....	2,672	2,275	2,417	3.6	3.4	3.3	3.2	3.1	3.2
20 to 24 years.....	521	496	457	7.1	6.6	5.9	7.3	6.3	5.9
25 years and over.....	2,178	1,795	1,984	3.3	3.1	3.0	2.8	2.7	3.0
25 to 54 years.....	1,683	1,414	1,503	3.5	3.3	3.3	3.0	2.9	3.0
25 to 34 years.....	746	604	674	4.4	4.0	4.1	3.7	3.5	3.9
35 to 44 years.....	539	443	405	3.3	3.2	2.9	2.5	2.7	2.4
45 to 54 years.....	398	368	425	2.6	2.7	2.8	2.5	2.4	2.8
55 years and over.....	502	386	482	2.9	2.5	2.3	2.6	2.2	2.7
<b>MARITAL STATUS</b>									
Married men, spouse present <sup>1</sup> .....	871	837	885	1.9	1.9	2.0	1.8	1.8	1.9
Married women, spouse present <sup>1</sup> .....	858	710	766	2.3	2.2	2.0	2.1	1.9	2.0
Women who maintain families <sup>2</sup> .....	557	403	514	5.3	5.7	4.9	3.6	3.8	5.0
<b>FULL- OR PART-TIME STATUS</b>									
Full-time workers <sup>3</sup> .....	5,223	4,634	4,863	3.8	3.7	3.5	3.4	3.4	3.5
Part-time workers <sup>4</sup> .....	1,085	1,078	1,117	4.0	3.9	4.4	3.9	3.8	4.0

<sup>1</sup> Beginning with data for January 2020, refers to persons in both opposite-sex and same-sex married couples. Prior to January 2020, referred to persons in opposite-sex married couples only.

<sup>2</sup> Data are not seasonally adjusted. Beginning with data for January 2020, refers to female householders residing with one or more family members, but not a spouse of either sex. Prior to January 2020, referred to female householders residing with one or more family members, but not an opposite-sex spouse.

<sup>3</sup> Full-time workers are unemployed persons who have expressed a desire to work full time (35 hours or more per week) or are on layoff from full-time jobs.

<sup>4</sup> Part-time workers are unemployed persons who have expressed a desire to work part time (less than 35 hours per week) or are on layoff from part-time jobs.

NOTE: Detail for the seasonally adjusted data shown in this table will not necessarily add to totals because of the independent seasonal adjustment of the various series. Updated population controls are introduced annually with the release of January data.

**HOUSEHOLD DATA**

**Table A-11. Unemployed persons by reason for unemployment**

[Numbers in thousands]

Reason	Not seasonally adjusted			Seasonally adjusted					
	Feb. 2022	Jan. 2023	Feb. 2023	Feb. 2022	Oct. 2022	Nov. 2022	Dec. 2022	Jan. 2023	Feb. 2023
<b>NUMBER OF UNEMPLOYED</b>									
Job losers and persons who completed temporary jobs.....	3,473	3,226	3,249	3,004	2,695	2,761	2,629	2,529	2,752
On temporary layoff.....	1,164	1,238	1,117	879	853	806	814	734	816
Not on temporary layoff.....	2,309	1,987	2,132	2,125	1,842	1,956	1,815	1,795	1,935
Permanent job losers.....	1,641	1,330	1,482	1,551	1,267	1,351	1,339	1,257	1,380
Persons who completed temporary jobs....	668	657	650	574	575	605	476	538	555
Job leavers.....	964	881	892	964	861	829	825	884	891
Reentrants.....	1,971	1,807	1,862	1,971	1,873	1,798	1,767	1,817	1,847
New entrants.....	374	465	462	429	494	558	497	531	515
<b>PERCENT DISTRIBUTION</b>									
Job losers and persons who completed temporary jobs.....	51.2	50.6	50.3	47.2	45.5	46.4	46.0	43.9	45.8
On temporary layoff.....	17.2	19.4	17.3	13.8	14.4	13.5	14.2	12.7	13.6
Not on temporary layoff.....	34.0	31.2	33.0	33.4	31.1	32.9	31.7	31.2	32.2
Job leavers.....	14.2	13.8	13.8	15.1	14.5	13.9	14.4	15.3	14.8
Reentrants.....	29.1	28.3	28.8	30.9	31.6	30.2	30.9	31.5	30.8
New entrants.....	5.5	7.3	7.1	6.7	8.3	9.4	8.7	9.2	8.6
<b>UNEMPLOYED AS A PERCENT OF THE CIVILIAN LABOR FORCE</b>									
Job losers and persons who completed temporary jobs.....	2.1	2.0	2.0	1.8	1.6	1.7	1.6	1.5	1.7
Job leavers.....	0.6	0.5	0.5	0.6	0.5	0.5	0.5	0.5	0.5
Reentrants.....	1.2	1.1	1.1	1.2	1.1	1.1	1.1	1.1	1.1
New entrants.....	0.2	0.3	0.3	0.3	0.3	0.3	0.3	0.3	0.3

NOTE: Detail for the seasonally adjusted data shown in this table will not necessarily add to total unemployed in table A-1 because of the independent seasonal adjustment of the various series. Updated population controls are introduced annually with the release of January data.

## HOUSEHOLD DATA

### Table A-12. Unemployed persons by duration of unemployment

[Numbers in thousands]

Duration	Not seasonally adjusted			Seasonally adjusted					
	Feb. 2022	Jan. 2023	Feb. 2023	Feb. 2022	Oct. 2022	Nov. 2022	Dec. 2022	Jan. 2023	Feb. 2023
<b>NUMBER OF UNEMPLOYED</b>									
Less than 5 weeks.....	1,980	2,358	2,130	2,142	2,215	2,244	2,233	1,946	2,289
5 to 14 weeks.....	2,158	1,965	2,247	1,803	1,774	1,694	1,639	1,785	1,845
15 weeks and over.....	2,644	2,055	2,089	2,418	1,987	2,036	1,895	2,001	1,862
15 to 26 weeks.....	879	926	957	726	817	821	826	890	805
27 weeks and over.....	1,765	1,129	1,131	1,691	1,169	1,215	1,069	1,111	1,057
Average (mean) duration, in weeks.....	26.0	19.1	19.1	26.2	20.8	21.4	19.5	20.4	19.3
Median duration, in weeks.....	9.9	8.4	8.9	9.3	8.4	8.8	8.9	9.1	8.3
<b>PERCENT DISTRIBUTION</b>									
Less than 5 weeks.....	29.2	37.0	32.9	33.7	37.1	37.6	38.7	33.9	38.2
5 to 14 weeks.....	31.8	30.8	34.7	28.3	29.7	28.4	28.4	31.1	30.8
15 weeks and over.....	39.0	32.2	32.3	38.0	33.2	34.1	32.9	34.9	31.1
15 to 26 weeks.....	13.0	14.5	14.8	11.4	13.7	13.7	14.3	15.5	13.4
27 weeks and over.....	26.0	17.7	17.5	26.6	19.6	20.3	18.5	19.4	17.6

NOTE: Detail for the seasonally adjusted data shown in this table will not necessarily add to total unemployed in table A-1 because of the independent seasonal adjustment of the various series. Updated population controls are introduced annually with the release of January data.



**HOUSEHOLD DATA**

**Table A-13. Employed and unemployed persons by occupation, not seasonally adjusted**

[Numbers in thousands]

Occupation	Employed		Unemployed		Unemployment rates	
	Feb. 2022	Feb. 2023	Feb. 2022	Feb. 2023	Feb. 2022	Feb. 2023
Total, 16 years and over <sup>1</sup> .....	156,942	159,713	6,782	6,465	4.1	3.9
Management, professional, and related occupations.....	67,754	69,986	1,490	1,406	2.2	2.0
Management, business, and financial operations occupations.....	29,131	30,137	638	632	2.1	2.1
Professional and related occupations.....	38,624	39,848	852	774	2.2	1.9
Service occupations.....	24,228	25,292	1,400	1,295	5.5	4.9
Sales and office occupations.....	31,383	30,220	1,311	1,327	4.0	4.2
Sales and related occupations.....	14,927	14,185	565	596	3.6	4.0
Office and administrative support occupations.....	16,456	16,035	747	731	4.3	4.4
Natural resources, construction, and maintenance occupations.....	14,091	14,190	917	902	6.1	6.0
Farming, fishing, and forestry occupations.....	963	946	119	85	11.0	8.2
Construction and extraction occupations.....	8,286	8,474	664	713	7.4	7.8
Installation, maintenance, and repair occupations.....	4,842	4,769	134	104	2.7	2.1
Production, transportation, and material moving occupations.....	19,485	20,025	1,270	1,073	6.1	5.1
Production occupations.....	7,993	8,380	413	421	4.9	4.8
Transportation and material moving occupations.....	11,492	11,645	856	651	6.9	5.3

<sup>1</sup> Persons with no previous work experience and persons whose last job was in the U.S. Armed Forces are included in the unemployed total.

NOTE: Updated population controls are introduced annually with the release of January data. Effective with January 2020 data, occupations reflect the introduction of the 2018 Census occupational classification system into the Current Population Survey, or household survey. This classification system is derived from the 2018 Standard Occupational Classification (SOC). No historical data have been revised. Data for 2020 are not strictly comparable with earlier years.

**HOUSEHOLD DATA**

**Table A-14. Unemployed persons by industry and class of worker, not seasonally adjusted**

Industry and class of worker	Number of unemployed persons (in thousands)		Unemployment rates	
	Feb. 2022	Feb. 2023	Feb. 2022	Feb. 2023
Total, 16 years and over <sup>1</sup> .....	6,782	6,465	4.1	3.9
Nonagricultural private wage and salary workers.....	5,479	5,218	4.2	4.0
Mining, quarrying, and oil and gas extraction.....	29	17	5.0	3.0
Construction.....	677	708	6.7	6.6
Manufacturing.....	497	464	3.2	3.0
Durable goods.....	324	268	3.3	2.6
Nondurable goods.....	174	196	3.1	3.6
Wholesale and retail trade.....	983	1,039	4.9	5.4
Transportation and utilities.....	409	377	5.1	4.5
Information.....	91	87	3.7	3.2
Financial activities.....	246	227	2.4	2.2
Professional and business services.....	737	801	3.9	4.2
Education and health services.....	754	611	3.0	2.4
Leisure and hospitality.....	849	693	6.6	5.2
Other services.....	207	194	3.5	3.1
Agriculture and related private wage and salary workers.....	144	105	9.4	7.1
Government workers.....	386	374	1.8	1.7
Self-employed workers, unincorporated, and unpaid family workers.....	399	306	3.9	3.0

<sup>1</sup> Persons with no previous work experience and persons whose last job was in the U.S. Armed Forces are included in the unemployed total.

NOTE: Updated population controls are introduced annually with the release of January data. Effective with January 2020 data, industries reflect the introduction of the 2017 Census industry classification system into the Current Population Survey. This industry classification system is derived from the 2017 North American Industry Classification System (NAICS). No historical data have been revised.

**HOUSEHOLD DATA**

**Table A-15. Alternative measures of labor underutilization**

[Percent]

Measure	Not seasonally adjusted			Seasonally adjusted					
	Feb. 2022	Jan. 2023	Feb. 2023	Feb. 2022	Oct. 2022	Nov. 2022	Dec. 2022	Jan. 2023	Feb. 2023
U-1 Persons unemployed 15 weeks or longer, as a percent of the civilian labor force.....	1.6	1.2	1.3	1.5	1.2	1.2	1.1	1.2	1.1
U-2 Job losers and persons who completed temporary jobs, as a percent of the civilian labor force.....	2.1	2.0	2.0	1.8	1.6	1.7	1.6	1.5	1.7
U-3 Total unemployed, as a percent of the civilian labor force (official unemployment rate).....	4.1	3.9	3.9	3.8	3.7	3.6	3.5	3.4	3.6
U-4 Total unemployed plus discouraged workers, as a percent of the civilian labor force plus discouraged workers.....	4.4	4.1	4.1	4.1	3.9	3.9	3.7	3.6	3.8
U-5 Total unemployed, plus discouraged workers, plus all other persons marginally attached to the labor force, as a percent of the civilian labor force plus all persons marginally attached to the labor force.....	5.0	4.7	4.7	4.7	4.5	4.5	4.2	4.2	4.4
U-6 Total unemployed, plus all persons marginally attached to the labor force, plus total employed part time for economic reasons, as a percent of the civilian labor force plus all persons marginally attached to the labor force.....	7.6	7.4	7.3	7.2	6.7	6.7	6.5	6.6	6.8

NOTE: Persons marginally attached to the labor force are those who currently are neither working nor looking for work but indicate that they want and are available for a job and have looked for work sometime in the past 12 months. Discouraged workers, a subset of the marginally attached, have given a job-market related reason for not currently looking for work. Persons employed part time for economic reasons are those who want and are available for full-time work but have had to settle for a part-time schedule. Updated population controls are introduced annually with the release of January data.

**HOUSEHOLD DATA**

**Table A-16. Persons not in the labor force and multiple jobholders by sex, not seasonally adjusted**

[Numbers in thousands]

Category	Total		Men		Women	
	Feb. 2022	Feb. 2023	Feb. 2022	Feb. 2023	Feb. 2022	Feb. 2023
<b>NOT IN THE LABOR FORCE</b>						
Total not in the labor force.....	99,600	99,934	41,024	41,689	58,575	58,245
Persons who currently want a job.....	5,299	4,987	2,493	2,514	2,806	2,472
Marginally attached to the labor force <sup>1</sup> .....	1,496	1,420	749	771	747	649
Discouraged workers <sup>2</sup> .....	393	361	214	202	178	159
Other persons marginally attached to the labor force <sup>3</sup> ..	1,103	1,059	535	569	569	490
<b>MULTIPLE JOBHOLDERS</b>						
Total multiple jobholders <sup>4</sup> .....	7,557	8,041	3,682	4,014	3,875	4,027
Percent of total employed.....	4.8	5.0	4.4	4.7	5.3	5.4
Primary job full time, secondary job part time.....	4,243	4,415	2,286	2,379	1,957	2,036
Primary and secondary jobs both part time.....	1,993	2,051	696	824	1,297	1,227
Primary and secondary jobs both full time.....	288	388	173	236	115	152
Hours vary on primary or secondary job.....	997	1,142	508	562	489	580

<sup>1</sup> Data refer to persons who want a job, have searched for work during the prior 12 months, and were available to take a job during the reference week, but had not looked for work in the past 4 weeks.

<sup>2</sup> Includes those who did not actively look for work in the prior 4 weeks for reasons such as thinks no work available, could not find work, lacks schooling or training, employer thinks too young or old, and other types of discrimination.

<sup>3</sup> Includes those who did not actively look for work in the prior 4 weeks for such reasons as school or family responsibilities, ill health, and transportation problems, as well as a number for whom reason for nonparticipation was not determined.

<sup>4</sup> Includes a small number of persons who work part time on their primary job and full time on their secondary job(s), not shown separately.

NOTE: Updated population controls are introduced annually with the release of January data.

**ESTABLISHMENT DATA**

**Table B-1. Employees on nonfarm payrolls by industry sector and selected industry detail**

[In thousands]

Industry	Not seasonally adjusted				Seasonally adjusted				Change from: Jan.2023 - Feb.2023 <sup>P</sup>
	Feb. 2022	Dec. 2022	Jan. 2023 <sup>P</sup>	Feb. 2023 <sup>P</sup>	Feb. 2022	Dec. 2022	Jan. 2023 <sup>P</sup>	Feb. 2023 <sup>P</sup>	
Total nonfarm.....	149,606	155,344	152,836	153,955	151,010	154,535	155,039	155,350	311
Total private.....	127,338	132,746	130,512	131,234	128,928	132,204	132,590	132,855	265
Goods-producing.....	20,523	21,377	21,062	21,156	20,906	21,461	21,512	21,532	20
Mining and logging.....	574	626	622	622	583	628	631	631	0
Logging.....	45.1	45.5	46.4	46.4	44.7	45.7	46.2	45.9	-0.3
Mining, quarrying, and oil and gas extraction..	529.2	580.5	575.1	575.9	538.2	582.4	585.1	584.7	-0.4
Oil and gas extraction.....	111.1	118.0	117.3	117.1	111.9	117.2	118.1	118.0	-0.1
Mining (except oil and gas).....	174.3	183.9	180.3	181.9	180.4	186.5	186.3	187.4	1.1
Coal mining.....	39.6	40.8	40.9	41.1	39.6	41.1	41.0	41.1	0.1
Metal ore mining.....	41.9	43.2	43.4	43.5	42.3	43.5	43.7	43.7	0.0
Nonmetallic mineral mining and quarrying.....	92.8	99.9	96.0	97.3	98.5	102.0	101.6	102.5	0.9
Support activities for mining.....	243.8	278.6	277.5	276.9	245.9	278.7	280.7	279.3	-1.4
Construction.....	7,349	7,763	7,549	7,613	7,669	7,859	7,894	7,918	24
Construction of buildings.....	1,682.9	1,773.2	1,751.1	1,756.6	1,732.2	1,785.9	1,798.0	1,800.9	2.9
Residential building construction.....	886.9	928.2	911.0	915.9	910.6	934.3	937.3	938.5	1.2
Nonresidential building construction.....	796.0	845.0	840.1	840.7	821.6	851.6	860.7	862.4	1.7
Heavy and civil engineering construction.....	972.1	1,040.2	986.5	1,009.0	1,061.5	1,081.5	1,085.9	1,093.6	7.7
Specialty trade contractors.....	4,693.7	4,949.3	4,811.1	4,846.9	4,875.1	4,991.4	5,009.9	5,023.3	13.4
Residential specialty trade contractors.....	2,196.9	2,301.4	2,235.1	2,262.9	2,274.1	2,324.8	2,325.3	2,336.5	11.2
Nonresidential specialty trade contractors...	2,496.8	2,647.9	2,576.0	2,584.0	2,601.0	2,666.6	2,684.6	2,686.8	2.2
Manufacturing.....	12,600	12,988	12,891	12,921	12,654	12,974	12,987	12,983	-4
Durable goods.....	7,835	8,107	8,052	8,069	7,859	8,096	8,095	8,095	0
Wood product manufacturing.....	424.6	429.2	426.8	426.0	425.7	429.3	429.0	428.0	-1.0
Nonmetallic mineral product manufacturing.....	406.5	428.9	423.5	424.9	420.5	432.4	434.1	435.6	1.5
Primary metal manufacturing.....	360.7	368.6	364.3	365.0	360.2	366.5	365.4	365.0	-0.4
Fabricated metal product manufacturing...	1,412.5	1,448.6	1,443.8	1,444.0	1,417.5	1,449.4	1,450.9	1,449.8	-1.1
Machinery manufacturing.....	1,087.9	1,124.6	1,121.0	1,123.3	1,089.9	1,123.0	1,124.0	1,124.4	0.4
Computer and electronic product manufacturing.....	1,072.9	1,102.4	1,096.0	1,100.8	1,074.3	1,100.7	1,100.8	1,103.6	2.8
Computer and peripheral equipment manufacturing.....	160.0	168.2	167.0	167.1	160.0	167.4	167.3	167.8	0.5
Communications equipment manufacturing.....	85.6	84.5	83.7	84.4	85.7	85.2	84.1	84.6	0.5
Semiconductor and other electronic component manufacturing.....	377.0	393.8	391.9	392.6	377.5	393.9	394.3	394.3	0.0
Navigational, measuring, electromedical, and control instruments manufacturing.....	419.6	423.4	421.0	423.9	420.0	422.0	422.3	423.8	1.5
Manufacturing and reproducing magnetic and optical media and audio and video equipment manufacturing.....	30.7	32.5	32.4	32.8	31.1	32.3	32.8	33.1	0.3
Electrical equipment, appliance, and component manufacturing.....	397.9	403.9	405.1	403.7	399.0	405.2	406.7	406.6	-0.1
Transportation equipment manufacturing <sup>1</sup> ...	1,668.2	1,792.0	1,769.8	1,780.4	1,664.9	1,782.4	1,776.3	1,777.6	1.3
Motor vehicles and parts <sup>2</sup> .....	971.9	1,060.0	1,040.2	1,045.1	967.8	1,048.1	1,043.0	1,043.2	0.2
Furniture and related product manufacturing.....	382.3	374.7	369.8	369.3	382.0	373.2	372.5	369.7	-2.8
Miscellaneous manufacturing.....	621.0	634.4	631.4	631.9	625.1	634.3	635.7	635.1	-0.6
Nondurable goods.....	4,765	4,881	4,839	4,852	4,795	4,878	4,892	4,888	-4
Food manufacturing.....	1,664.6	1,725.4	1,709.2	1,715.1	1,675.7	1,717.3	1,726.2	1,725.1	-1.1
Textile mills.....	98.3	96.0	96.0	94.1	99.1	96.0	96.7	95.0	-1.7
Textile product mills.....	105.4	102.3	103.3	103.1	105.8	102.6	103.6	103.5	-0.1
Apparel manufacturing.....	93.4	92.6	92.2	92.9	93.5	91.9	93.7	92.4	-1.3
Paper manufacturing.....	360.5	359.0	356.8	356.0	361.5	358.7	357.3	356.2	-1.1
Printing and related support activities.....	373.8	385.5	377.7	378.9	377.2	381.5	381.3	382.1	0.8
Petroleum and coal products manufacturing.....	100.9	102.0	100.2	101.6	104.5	104.0	104.4	105.4	1.0
Chemical manufacturing.....	890.6	915.2	909.9	915.7	890.3	916.1	914.7	917.2	2.5
Plastics and rubber products manufacturing.....	747.5	755.4	750.2	748.1	745.9	754.7	755.8	751.1	-4.7

See footnotes at end of table.

**ESTABLISHMENT DATA**

**Table B-1. Employees on nonfarm payrolls by industry sector and selected industry detail**

— Continued

[In thousands]

Industry	Not seasonally adjusted				Seasonally adjusted				Change from: Jan.2023 - Feb.2023 <sup>P</sup>
	Feb. 2022	Dec. 2022	Jan. 2023 <sup>P</sup>	Feb. 2023 <sup>P</sup>	Feb. 2022	Dec. 2022	Jan. 2023 <sup>P</sup>	Feb. 2023 <sup>P</sup>	
Nondurable goods - Continued									
Beverage, tobacco, and leather and allied product manufacturing.....	330.2	347.8	343.2	346.6	341.7	355.3	358.4	360.3	1.9
Private service-providing.....	106,815	111,369	109,450	110,078	108,022	110,743	111,078	111,323	245
Trade, transportation, and utilities.....	28,294	29,506	28,749	28,635	28,561	28,767	28,824	28,862	38
Wholesale trade.....	5,847.2	6,032.5	5,989.0	6,009.6	5,882.0	6,028.8	6,037.7	6,048.8	11.1
Merchant wholesalers, durable goods.....	3,227.2	3,331.1	3,316.4	3,326.7	3,238.8	3,330.0	3,336.3	3,341.3	5.0
Merchant wholesalers, nondurable goods....	2,119.1	2,175.6	2,151.1	2,157.2	2,138.8	2,174.6	2,176.3	2,179.3	3.0
Wholesale trade agents and brokers.....	500.9	525.8	521.5	525.7	504.4	524.2	525.1	528.2	3.1
Retail trade.....	15,351.8	15,868.1	15,454.3	15,406.7	15,564.1	15,477.8	15,511.7	15,561.8	50.1
Motor vehicle and parts dealers.....	1,976.4	2,019.7	2,003.7	2,009.7	1,992.6	2,026.1	2,027.2	2,026.7	-0.5
Automobile dealers.....	1,244.6	1,257.3	1,249.5	1,253.2	1,247.9	1,259.7	1,259.4	1,258.8	-0.6
Other motor vehicle dealers.....	166.4	172.7	168.7	170.5	174.3	178.6	179.0	178.4	-0.6
Automotive parts, accessories, and tire retailers.....	565.4	589.7	585.5	586.0	570.4	587.7	588.8	589.5	0.7
Building material and garden equipment and supplies dealers.....	1,388.9	1,386.9	1,357.3	1,361.8	1,426.8	1,416.4	1,411.6	1,408.6	-3.0
Food and beverage retailers.....	3,161.8	3,259.9	3,232.4	3,235.8	3,169.4	3,231.9	3,244.8	3,249.3	4.5
Furniture, home furnishings, electronics, and appliance retailers.....	923.3	906.0	885.6	874.8	929.6	877.5	881.6	882.1	0.5
Furniture and home furnishings retailers...	468.5	462.6	451.7	446.2	470.9	448.2	447.4	446.6	-0.8
Electronics and appliance retailers.....	454.8	443.4	433.9	428.6	454.2	426.7	427.9	427.4	-0.5
General merchandise retailers.....	3,179.5	3,269.2	3,114.6	3,121.6	3,240.6	3,068.4	3,079.0	3,118.2	39.2
Department stores.....	956.7	1,038.0	952.3	924.8	989.2	917.4	923.3	937.9	14.6
Warehouse clubs, supercenters, and other general merchandise retailers....	2,222.8	2,231.2	2,162.3	2,196.8	2,251.4	2,151.0	2,155.7	2,180.2	24.5
Health and personal care retailers.....	1,110.7	1,139.7	1,118.9	1,108.6	1,111.9	1,114.1	1,109.0	1,110.8	1.8
Gasoline stations and fuel dealers.....	1,011.0	1,055.6	1,051.4	1,050.8	1,025.6	1,055.4	1,060.4	1,061.8	1.4
Clothing, clothing accessories, shoe, and jewelry retailers.....	1,102.6	1,239.9	1,169.0	1,131.7	1,137.8	1,153.0	1,160.0	1,166.8	6.8
Sporting goods, hobby, musical instrument, book, and miscellaneous retailers.....	1,497.6	1,591.2	1,521.4	1,511.9	1,529.8	1,535.0	1,538.1	1,537.5	-0.6
Transportation and warehousing.....	6,546.1	7,049.5	6,754.3	6,670.0	6,563.3	6,704.9	6,721.2	6,699.7	-21.5
Air transportation.....	478.9	520.5	522.3	523.8	482.7	523.6	526.6	528.0	1.4
Rail transportation.....	145.2	148.7	148.6	148.6	145.8	148.8	149.1	148.9	-0.2
Water transportation.....	59.5	64.5	63.0	63.9	61.4	65.7	66.2	67.0	0.8
Truck transportation.....	1,542.0	1,611.0	1,586.4	1,575.8	1,564.9	1,607.1	1,608.4	1,599.9	-8.5
Transit and ground passenger transportation.....	415.7	444.0	443.0	444.7	405.0	428.7	436.5	433.5	-3.0
Pipeline transportation.....	50.6	48.1	47.3	47.9	51.1	47.9	48.0	48.4	0.4
Scenic and sightseeing transportation.....	24.0	27.5	23.6	23.7	29.7	31.2	30.6	30.6	0.0
Support activities for transportation.....	777.4	820.7	813.6	810.6	776.4	809.0	816.4	812.4	-4.0
Couriers and messengers.....	1,129.6	1,383.6	1,165.1	1,094.7	1,132.9	1,109.5	1,104.5	1,101.6	-2.9
Warehousing and storage.....	1,923.2	1,980.9	1,941.4	1,936.3	1,913.4	1,933.4	1,934.9	1,929.4	-5.5
Utilities.....	549.2	555.5	551.7	549.0	551.2	555.3	553.2	552.1	-1.1
Information.....	2,974	3,139	3,050	3,044	2,992	3,120	3,100	3,075	-25
Motion picture and sound recording industries.....	430.0	470.1	417.8	421.3	444.3	461.7	451.1	442.2	-8.9
Publishing industries.....	912.1	955.5	938.1	934.1	916.6	952.3	946.5	941.4	-5.1
Broadcasting and content providers.....	355.6	359.9	354.8	353.2	354.3	359.6	357.4	354.5	-2.9
Telecommunications.....	655.4	662.7	651.8	651.9	654.3	658.1	654.8	652.1	-2.7
Computing infrastructure providers, data processing, web hosting, and related services.....	445.7	490.0	485.7	484.1	445.6	486.7	487.1	483.1	-4.0
Web search portals, libraries, archives, and other information services.....	175.6	200.8	201.7	199.2	176.6	201.3	203.0	201.6	-1.4
Financial activities.....	8,931	9,132	9,049	9,047	8,982	9,101	9,106	9,105	-1
Finance and insurance.....	6,629.1	6,716.2	6,682.3	6,675.1	6,634.4	6,691.7	6,694.7	6,684.5	-10.2
Monetary authorities-central bank.....	21.1	21.8	21.7	21.9	21.1	21.8	21.9	22.0	0.1
Credit intermediation and related activities.....	2,705.8	2,684.9	2,678.0	2,672.9	2,705.3	2,681.3	2,679.5	2,672.8	-6.7

See footnotes at end of table.

**ESTABLISHMENT DATA**

**Table B-1. Employees on nonfarm payrolls by industry sector and selected industry detail**

— Continued

[In thousands]

Industry	Not seasonally adjusted				Seasonally adjusted				Change from: Jan.2023 - Feb.2023 <sup>P</sup>
	Feb. 2022	Dec. 2022	Jan. 2023 <sup>P</sup>	Feb. 2023 <sup>P</sup>	Feb. 2022	Dec. 2022	Jan. 2023 <sup>P</sup>	Feb. 2023 <sup>P</sup>	
Credit intermediation and related - Continued									
Depository credit intermediation <sup>1</sup> .....	1,755.4	1,784.7	1,782.7	1,786.3	1,754.6	1,783.4	1,783.3	1,786.4	3.1
Commercial banking.....	1,366.4	1,376.9	1,376.1	1,379.8	1,364.6	1,376.6	1,376.0	1,377.3	1.3
Nondepository credit intermediation.....	613.8	579.5	576.9	569.8	615.2	577.6	578.5	571.7	-6.8
Activities related to credit intermediation...	336.6	320.7	318.4	316.8	335.5	320.3	317.7	314.7	-3.0
Securities, commodity contracts, funds, trusts, and other financial vehicles, investments, and related activities.....	1,020.3	1,073.5	1,065.3	1,066.2	1,025.7	1,068.3	1,071.3	1,071.9	0.6
Insurance carriers and related activities.....	2,881.9	2,936.0	2,917.3	2,914.1	2,882.3	2,920.3	2,922.0	2,917.8	-4.2
Real estate and rental and leasing.....	2,302.3	2,416.1	2,366.4	2,371.9	2,347.4	2,409.2	2,410.9	2,420.3	9.4
Real estate.....	1,776.2	1,855.6	1,825.0	1,826.3	1,804.4	1,844.9	1,851.1	1,855.0	3.9
Rental and leasing services.....	504.4	537.7	519.5	523.5	520.9	541.8	537.4	542.8	5.4
Lessors of nonfinancial intangible assets (except copyrighted works).....	21.7	22.8	21.9	22.1	22.1	22.5	22.4	22.5	0.1
Professional and business services.....	22,086	22,907	22,474	22,630	22,306	22,814	22,867	22,912	45
Professional, scientific, and technical services.....	10,332.2	10,750.7	10,697.0	10,773.7	10,302.6	10,713.5	10,741.2	10,760.7	19.5
Legal services.....	1,163.6	1,190.0	1,174.5	1,174.2	1,169.0	1,180.4	1,181.2	1,182.7	1.5
Accounting, tax preparation, bookkeeping, and payroll services.....	1,157.3	1,130.5	1,164.8	1,213.1	1,072.8	1,131.7	1,137.2	1,136.7	-0.5
Architectural, engineering, and related services.....	1,557.8	1,645.5	1,629.6	1,631.4	1,578.5	1,644.7	1,650.3	1,654.9	4.6
Specialized design services.....	144.8	159.3	155.5	158.0	146.7	157.2	158.2	159.8	1.6
Computer systems design and related services.....	2,411.5	2,492.2	2,481.4	2,482.8	2,416.3	2,493.4	2,486.8	2,484.4	-2.4
Management, scientific, and technical consulting services.....	1,737.3	1,850.9	1,830.9	1,846.9	1,744.9	1,832.2	1,845.2	1,857.1	11.9
Scientific research and development services.....	864.4	914.5	910.3	917.3	870.9	913.9	917.7	921.4	3.7
Advertising, public relations, and related services.....	474.7	493.9	489.1	490.4	474.9	493.3	495.3	494.3	-1.0
Other professional, scientific, and technical services.....	820.8	873.9	860.9	859.6	828.6	866.7	869.4	869.5	0.1
Management of companies and enterprises... ..	2,464.8	2,523.7	2,511.5	2,508.3	2,475.1	2,516.3	2,519.5	2,520.6	1.1
Administrative and support and waste management and remediation services... ..	9,289.3	9,632.1	9,265.3	9,347.8	9,528.5	9,584.0	9,606.4	9,630.4	24.0
Administrative and support services.....	8,829.3	9,147.9	8,789.4	8,866.3	9,061.5	9,101.6	9,121.2	9,142.0	20.8
Office administrative services.....	569.4	610.0	606.6	612.9	574.5	612.8	615.0	619.1	4.1
Facilities support services.....	153.3	158.7	159.2	160.0	154.1	158.4	159.3	160.3	1.0
Employment services <sup>1</sup> .....	3,858.5	3,945.7	3,720.5	3,770.3	3,902.3	3,839.5	3,840.4	3,851.3	10.9
Temporary help services.....	3,112.0	3,147.1	2,944.4	2,998.0	3,148.7	3,037.9	3,053.2	3,060.0	6.8
Business support services.....	823.2	784.8	772.7	764.2	820.4	766.2	766.3	763.1	-3.2
Travel arrangement and reservation services.....	160.1	179.2	178.0	177.2	164.9	180.9	181.9	180.8	-1.1
Investigation and security services.....	936.8	979.2	967.9	966.1	942.1	970.9	979.2	975.5	-3.7
Services to buildings and dwellings.....	2,015.1	2,151.1	2,053.2	2,080.9	2,183.1	2,230.2	2,237.6	2,247.9	10.3
Other support services.....	312.9	339.2	331.3	334.7	320.2	342.8	341.5	344.1	2.6
Waste management and remediation services.....	460.0	484.2	475.9	481.5	467.0	482.4	485.2	488.4	3.2
Private education and health services.....	24,078	24,960	24,749	25,111	23,996	24,827	24,934	25,008	74
Private educational services.....	3,852.0	3,920.4	3,779.0	4,035.2	3,732.8	3,856.3	3,888.4	3,899.8	11.4
Health care and social assistance.....	20,225.9	21,039.2	20,970.1	21,076.1	20,263.5	20,970.2	21,045.8	21,108.6	62.8
Health care <sup>3</sup> .....	16,064.1	16,660.1	16,585.5	16,657.4	16,098.5	16,591.3	16,644.1	16,688.3	44.2
Ambulatory health care services.....	8,007.8	8,314.9	8,256.5	8,289.1	8,020.8	8,272.8	8,294.2	8,305.3	11.1
Offices of physicians.....	2,772.6	2,877.4	2,851.2	2,857.7	2,778.3	2,855.9	2,862.3	2,864.1	1.8
Offices of dentists.....	1,003.4	1,031.4	1,027.3	1,024.0	1,004.9	1,031.2	1,028.8	1,027.9	-0.9
Offices of other health practitioners.....	1,062.0	1,114.6	1,106.4	1,117.9	1,063.1	1,110.2	1,114.1	1,120.7	6.6
Outpatient care centers.....	1,019.0	1,058.2	1,058.1	1,059.2	1,019.1	1,053.0	1,060.2	1,059.4	-0.8
Medical and diagnostic laboratories... ..	323.1	321.1	321.8	324.8	323.5	320.4	322.2	324.3	2.1
Home health care services.....	1,506.8	1,575.7	1,556.9	1,572.9	1,513.3	1,567.7	1,571.2	1,576.5	5.3
Other ambulatory health care services.....	320.9	336.5	334.8	332.6	318.7	334.4	335.3	332.4	-2.9
Hospitals.....	5,099.1	5,262.8	5,247.6	5,273.2	5,105.7	5,245.3	5,258.5	5,277.9	19.4

See footnotes at end of table.

**ESTABLISHMENT DATA**

**Table B-1. Employees on nonfarm payrolls by industry sector and selected industry detail**

— Continued

[In thousands]

Industry	Not seasonally adjusted				Seasonally adjusted				Change from: Jan.2023 - Feb.2023 <sup>p</sup>
	Feb. 2022	Dec. 2022	Jan. 2023 <sup>p</sup>	Feb. 2023 <sup>p</sup>	Feb. 2022	Dec. 2022	Jan. 2023 <sup>p</sup>	Feb. 2023 <sup>p</sup>	
Health care - Continued									
Nursing and residential care facilities. . . . .	2,957.2	3,082.4	3,081.4	3,095.1	2,972.0	3,073.2	3,091.4	3,105.1	13.7
Skilled nursing care facilities. . . . .	1,335.3	1,382.1	1,379.8	1,382.8	1,343.3	1,375.9	1,381.4	1,386.8	5.4
Residential intellectual and developmental disability, mental health, and substance abuse facilities. . . . .	596.2	623.5	620.3	620.6	597.4	621.7	623.8	623.4	-0.4
Continuing care retirement communities and assisted living facilities for the elderly. . . . .	874.5	923.0	926.6	936.5	880.0	921.2	930.7	940.3	9.6
Other residential care facilities. . . . .	151.2	153.8	154.7	155.2	151.3	154.4	155.5	154.6	-0.9
Social assistance. . . . .	4,161.8	4,379.1	4,384.6	4,418.7	4,165.0	4,378.9	4,401.7	4,420.3	18.6
Individual and family services. . . . .	2,756.2	2,912.0	2,917.1	2,938.9	2,759.4	2,913.6	2,926.8	2,941.3	14.5
Community food and housing, and emergency and other relief services. . . . .	199.7	211.1	211.2	212.6	199.3	208.9	210.9	210.6	-0.3
Vocational rehabilitation services. . . . .	268.1	274.1	273.1	275.6	272.0	275.1	278.1	278.5	0.4
Child care services. . . . .	937.8	981.9	983.2	991.6	934.3	981.3	985.8	990.0	4.2
Leisure and hospitality. . . . .	14,864	15,947	15,638	15,844	15,536	16,316	16,430	16,535	105
Arts, entertainment, and recreation. . . . .	2,013.6	2,241.7	2,142.5	2,191.9	2,241.8	2,397.8	2,408.2	2,429.6	21.4
Performing arts, spectator sports, and related industries. . . . .	433.2	487.5	446.0	474.8	476.9	513.4	513.5	520.5	7.0
Museums, historical sites, and similar institutions. . . . .	139.4	161.8	152.3	153.8	153.1	164.8	166.0	167.5	1.5
Amusement, gambling, and recreation industries. . . . .	1,441.0	1,592.4	1,544.2	1,563.3	1,611.8	1,719.6	1,728.7	1,741.6	12.9
Accommodation and food services. . . . .	12,850.6	13,705.5	13,495.2	13,651.6	13,294.2	13,918.1	14,021.3	14,105.6	84.3
Accommodation. . . . .	1,612.9	1,770.5	1,751.7	1,775.4	1,710.8	1,846.2	1,860.6	1,875.0	14.4
Food services and drinking places. . . . .	11,237.7	11,935.0	11,743.5	11,876.2	11,583.4	12,071.9	12,160.7	12,230.6	69.9
Other services. . . . .	5,588	5,778	5,741	5,767	5,649	5,798	5,817	5,826	9
Repair and maintenance. . . . .	1,366.9	1,410.8	1,403.9	1,412.1	1,380.2	1,417.7	1,420.7	1,424.9	4.2
Personal and laundry services. . . . .	1,435.7	1,520.9	1,508.9	1,513.2	1,454.2	1,521.6	1,532.5	1,531.8	-0.7
Religious, grantmaking, civic, professional, and similar organizations. . . . .	2,785.6	2,846.4	2,827.7	2,841.8	2,814.3	2,859.1	2,864.0	2,869.0	5.0
Government. . . . .	22,268	22,598	22,324	22,721	22,082	22,331	22,449	22,495	46
Federal. . . . .	2,860	2,890	2,871	2,884	2,874	2,874	2,881	2,888	7
Federal, except U.S. Postal Service. . . . .	2,251.4	2,277.9	2,271.6	2,280.0	2,266.8	2,278.8	2,283.2	2,287.4	4.2
U.S. Postal Service. . . . .	608.5	611.7	599.2	604.1	607.5	595.5	597.5	600.9	3.4
State government. . . . .	5,183	5,167	5,066	5,269	5,088	5,087	5,162	5,164	2
State government education. . . . .	2,553.5	2,511.3	2,413.5	2,603.7	2,447.4	2,421.5	2,492.4	2,488.1	-4.3
State government, excluding education. . . . .	2,629.1	2,655.5	2,652.8	2,665.1	2,640.7	2,665.8	2,669.5	2,676.3	6.8
Local government. . . . .	14,225	14,541	14,387	14,568	14,120	14,370	14,406	14,443	37
Local government education. . . . .	7,975.4	8,114.9	7,995.0	8,153.9	7,745.9	7,868.1	7,888.7	7,911.8	23.1
Local government, excluding education. . . . .	6,249.1	6,426.5	6,391.6	6,414.2	6,373.6	6,501.6	6,517.3	6,531.3	14.0

<sup>1</sup> Includes other industries, not shown separately.

<sup>2</sup> Includes motor vehicles, motor vehicle bodies and trailers, and motor vehicle parts.

<sup>3</sup> Includes ambulatory health care services, hospitals, and nursing and residential care facilities.

p Preliminary

NOTE: Data have been revised to reflect March 2022 benchmark levels and updated seasonal adjustment factors.



**ESTABLISHMENT DATA**

**Table B-2. Average weekly hours and overtime of all employees on private nonfarm payrolls by industry sector, seasonally adjusted**

Industry	Feb. 2022	Dec. 2022	Jan. 2023 <sup>p</sup>	Feb. 2023 <sup>p</sup>
<b>AVERAGE WEEKLY HOURS</b>				
Total private.....	34.7	34.4	34.6	34.5
Goods-producing.....	40.3	39.7	40.2	40.0
Mining and logging.....	45.4	45.5	46.2	45.7
Construction.....	39.4	38.6	39.2	39.0
Manufacturing.....	40.7	40.1	40.5	40.3
Durable goods.....	41.0	40.6	41.0	40.9
Nondurable goods.....	40.1	39.4	39.8	39.4
Private service-providing.....	33.6	33.3	33.6	33.4
Trade, transportation, and utilities.....	34.2	34.1	34.3	34.1
Wholesale trade.....	39.2	38.7	38.9	38.8
Retail trade.....	30.4	30.2	30.4	30.1
Transportation and warehousing.....	38.0	38.4	38.6	38.5
Utilities.....	42.2	41.8	41.9	42.1
Information.....	36.9	36.5	36.6	36.4
Financial activities.....	37.5	37.4	37.4	37.3
Professional and business services.....	36.8	36.4	36.6	36.6
Private education and health services.....	33.5	33.3	33.5	33.4
Leisure and hospitality.....	25.9	25.3	25.8	25.5
Other services.....	32.2	32.3	32.3	32.3
<b>AVERAGE OVERTIME HOURS</b>				
Manufacturing.....	3.6	2.9	3.1	3.0
Durable goods.....	3.6	3.1	3.1	3.1
Nondurable goods.....	3.5	2.7	3.0	2.8

p Preliminary

NOTE: Data have been revised to reflect March 2022 benchmark levels and updated seasonal adjustment factors.

**ESTABLISHMENT DATA**

**Table B-3. Average hourly and weekly earnings of all employees on private nonfarm payrolls by industry sector, seasonally adjusted**

Industry	Average hourly earnings				Average weekly earnings			
	Feb. 2022	Dec. 2022	Jan. 2023 <sup>p</sup>	Feb. 2023 <sup>p</sup>	Feb. 2022	Dec. 2022	Jan. 2023 <sup>p</sup>	Feb. 2023 <sup>p</sup>
Total private.....	\$31.63	\$32.92	\$33.01	\$33.09	\$1,097.56	\$1,132.45	\$1,142.15	\$1,141.61
Goods-producing.....	31.89	33.11	33.25	33.28	1,285.17	1,314.47	1,336.65	1,331.20
Mining and logging.....	35.55	36.64	36.76	36.87	1,613.97	1,667.12	1,698.31	1,684.96
Construction.....	33.97	35.60	35.67	35.76	1,338.42	1,374.16	1,398.26	1,394.64
Manufacturing.....	30.48	31.47	31.63	31.62	1,240.54	1,261.95	1,281.02	1,274.29
Durable goods.....	31.97	32.96	33.14	33.16	1,310.77	1,338.18	1,358.74	1,356.24
Nondurable goods.....	27.99	28.92	29.06	28.98	1,122.40	1,139.45	1,156.59	1,141.81
Private service-providing.....	31.57	32.88	32.96	33.04	1,060.75	1,094.90	1,107.46	1,103.54
Trade, transportation, and utilities.....	27.26	28.23	28.39	28.55	932.29	962.64	973.78	973.56
Wholesale trade.....	34.66	35.87	36.29	36.16	1,358.67	1,388.17	1,411.68	1,403.01
Retail trade.....	22.67	23.45	23.54	23.81	689.17	708.19	715.62	716.68
Transportation and warehousing.....	27.37	28.17	28.24	28.40	1,040.06	1,081.73	1,090.06	1,093.40
Utilities.....	46.25	48.44	48.74	48.84	1,951.75	2,024.79	2,042.21	2,056.16
Information.....	45.55	47.74	47.77	48.05	1,680.80	1,742.51	1,748.38	1,749.02
Financial activities.....	40.75	42.42	42.47	42.65	1,528.13	1,586.51	1,588.38	1,590.85
Professional and business services.....	37.95	39.53	39.70	39.76	1,396.56	1,438.89	1,453.02	1,455.22
Private education and health services.....	31.29	32.58	32.68	32.63	1,048.22	1,084.91	1,094.78	1,089.84
Leisure and hospitality.....	19.49	20.78	20.77	20.83	504.79	525.73	535.87	531.17
Other services.....	28.34	29.37	29.50	29.51	912.55	948.65	952.85	953.17

p Preliminary

NOTE: Data have been revised to reflect March 2022 benchmark levels and updated seasonal adjustment factors.

**ESTABLISHMENT DATA**

**Table B-4. Indexes of aggregate weekly hours and payrolls for all employees on private nonfarm payrolls by industry sector, seasonally adjusted**

[2007=100]

Industry	Index of aggregate weekly hours <sup>1</sup>					Index of aggregate weekly payrolls <sup>2</sup>				
	Feb. 2022	Dec. 2022	Jan. 2023 <sup>p</sup>	Feb. 2023 <sup>p</sup>	Percent change from: Jan. 2023 - Feb. 2023 <sup>p</sup>	Feb. 2022	Dec. 2022	Jan. 2023 <sup>p</sup>	Feb. 2023 <sup>p</sup>	Percent change from: Jan. 2023 - Feb. 2023 <sup>p</sup>
Total private.....	112.3	114.2	115.2	115.1	-0.1	169.8	179.7	181.8	182.0	0.1
Goods-producing.....	96.0	97.1	98.5	98.1	-0.4	138.4	145.3	148.1	147.6	-0.3
Mining and logging.....	83.2	89.8	91.6	90.6	-1.1	118.7	132.1	135.2	134.1	-0.8
Construction.....	104.2	104.6	106.7	106.4	-0.3	153.7	161.8	165.3	165.4	0.1
Manufacturing.....	92.7	93.6	94.6	94.1	-0.5	131.3	137.0	139.2	138.4	-0.6
Durable goods.....	90.7	92.5	93.4	93.2	-0.2	128.8	135.5	137.5	137.3	-0.1
Nondurable goods.....	96.0	95.9	97.2	96.1	-1.1	136.3	140.8	143.3	141.4	-1.3
Private service-providing.....	116.8	118.7	120.2	119.7	-0.4	179.3	189.7	192.5	192.2	-0.2
Trade, transportation, and utilities.....	106.7	107.2	108.0	107.5	-0.5	156.9	163.2	165.4	165.6	0.1
Wholesale trade.....	101.7	102.9	103.6	103.5	-0.1	147.5	154.4	157.3	156.6	-0.4
Retail trade.....	96.3	95.1	96.0	95.3	-0.7	144.4	147.5	149.4	150.1	0.5
Transportation and warehousing.....	143.3	147.9	149.1	148.2	-0.6	199.5	212.0	214.2	214.1	0.0
Utilities.....	100.6	100.4	100.3	100.6	0.3	153.8	160.7	161.5	162.3	0.5
Information.....	100.9	104.0	103.6	102.2	-1.4	163.6	176.8	176.3	174.9	-0.8
Financial activities.....	110.3	111.5	111.6	111.3	-0.3	175.4	184.5	184.8	185.1	0.2
Professional and business services.....	128.4	129.9	130.9	131.2	0.2	197.4	208.0	210.6	211.3	0.3
Private education and health services..	131.3	135.0	136.4	136.4	0.0	197.6	211.6	214.4	214.1	-0.1
Leisure and hospitality.....	114.8	117.8	120.9	120.3	-0.5	180.5	197.5	202.7	202.2	-0.2
Other services.....	104.9	108.0	108.3	108.5	0.2	162.9	173.8	175.2	175.5	0.2

<sup>1</sup> The indexes of aggregate weekly hours are calculated by dividing the current month's estimates of aggregate hours by the corresponding 2007 annual average aggregate hours. Aggregate hours estimates are the product of estimates of average weekly hours and employment.

<sup>2</sup> The indexes of aggregate weekly payrolls are calculated by dividing the current month's estimates of aggregate weekly payrolls by the corresponding 2007 annual average aggregate weekly payrolls. Aggregate payrolls estimates are the product of estimates of average hourly earnings, average weekly hours, and employment.

p Preliminary

NOTE: Data have been revised to reflect March 2022 benchmark levels and updated seasonal adjustment factors.

**ESTABLISHMENT DATA**

**Table B-5. Employment of women on nonfarm payrolls by industry sector, seasonally adjusted**

Industry	Women employees (in thousands)				Percent of all employees			
	Feb. 2022	Dec. 2022	Jan. 2023 <sup>p</sup>	Feb. 2023 <sup>p</sup>	Feb. 2022	Dec. 2022	Jan. 2023 <sup>p</sup>	Feb. 2023 <sup>p</sup>
Total nonfarm.....	74,996	76,965	77,209	77,362	49.7	49.8	49.8	49.8
Total private.....	62,197	63,943	64,128	64,251	48.2	48.4	48.4	48.4
Goods-producing.....	4,783	4,965	4,970	4,980	22.9	23.1	23.1	23.1
Mining and logging.....	75	81	82	82	12.9	12.9	13.0	13.0
Construction.....	1,076	1,111	1,115	1,119	14.0	14.1	14.1	14.1
Manufacturing.....	3,632	3,773	3,773	3,779	28.7	29.1	29.1	29.1
Durable goods.....	1,920	2,018	2,017	2,020	24.4	24.9	24.9	25.0
Nondurable goods.....	1,712	1,755	1,756	1,759	35.7	36.0	35.9	36.0
Private service-providing.....	57,414	58,978	59,158	59,271	53.2	53.3	53.3	53.2
Trade, transportation, and utilities.....	11,236	11,327	11,346	11,373	39.3	39.4	39.4	39.4
Wholesale trade.....	1,784.3	1,845.6	1,849.5	1,858.5	30.3	30.6	30.6	30.7
Retail trade.....	7,548.8	7,514.4	7,521.0	7,530.7	48.5	48.5	48.5	48.4
Transportation and warehousing.....	1,765.1	1,823.3	1,830.5	1,838.8	26.9	27.2	27.2	27.4
Utilities.....	137.9	144.0	144.5	144.5	25.0	25.9	26.1	26.2
Information.....	1,174	1,265	1,262	1,251	39.2	40.5	40.7	40.7
Financial activities.....	5,012	5,071	5,075	5,064	55.8	55.7	55.7	55.6
Professional and business services.....	10,344	10,502	10,547	10,586	46.4	46.0	46.1	46.2
Private education and health services.....	18,424	19,106	19,157	19,195	76.8	77.0	76.8	76.8
Leisure and hospitality.....	8,200	8,599	8,651	8,677	52.8	52.7	52.7	52.5
Other services.....	3,024	3,108	3,120	3,125	53.5	53.6	53.6	53.6
Government.....	12,799	13,022	13,081	13,111	58.0	58.3	58.3	58.3

p Preliminary

NOTE: Data have been revised to reflect March 2022 benchmark levels and updated seasonal adjustment factors.

**ESTABLISHMENT DATA**

**Table B-6. Employment of production and nonsupervisory employees on private nonfarm payrolls by industry sector, seasonally adjusted<sup>1</sup>**

[In thousands]

Industry	Feb. 2022	Dec. 2022	Jan. 2023 <sup>p</sup>	Feb. 2023 <sup>p</sup>
Total private.....	105,064	107,475	107,851	108,046
Goods-producing.....	14,939	15,393	15,437	15,440
Mining and logging.....	442	471	477	477
Construction.....	5,644	5,798	5,824	5,824
Manufacturing.....	8,853	9,124	9,136	9,139
Durable goods.....	5,426	5,624	5,627	5,634
Nondurable goods.....	3,427	3,500	3,509	3,505
Private service-providing.....	90,125	92,082	92,414	92,606
Trade, transportation, and utilities.....	24,169	24,212	24,279	24,358
Wholesale trade.....	4,687.5	4,793.8	4,798.6	4,811.7
Retail trade.....	13,258.1	13,148.2	13,189.1	13,243.4
Transportation and warehousing.....	5,784.7	5,828.6	5,850.5	5,864.0
Utilities.....	438.4	441.4	440.3	438.8
Information.....	2,376	2,484	2,465	2,449
Financial activities.....	6,766	6,845	6,858	6,864
Professional and business services.....	17,882	18,140	18,162	18,180
Private education and health services.....	20,903	21,594	21,708	21,776
Leisure and hospitality.....	13,447	14,088	14,210	14,239
Other services.....	4,582	4,719	4,732	4,740

<sup>1</sup> Data relate to production employees in mining and logging and manufacturing, construction employees in construction, and nonsupervisory employees in the service-providing industries. These groups account for approximately four-fifths of the total employment on private nonfarm payrolls.

<sup>p</sup> Preliminary

NOTE: Data have been revised to reflect March 2022 benchmark levels and updated seasonal adjustment factors.

**ESTABLISHMENT DATA**

**Table B-7. Average weekly hours and overtime of production and nonsupervisory employees on private nonfarm payrolls by industry sector, seasonally adjusted<sup>1</sup>**

Industry	Feb. 2022	Dec. 2022	Jan. 2023 <sup>p</sup>	Feb. 2023 <sup>p</sup>
<b>AVERAGE WEEKLY HOURS</b>				
Total private.....	34.2	33.8	34.1	33.9
Goods-producing.....	41.2	40.3	40.7	40.6
Mining and logging.....	47.0	46.7	47.6	46.8
Construction.....	40.2	39.3	39.9	39.9
Manufacturing.....	41.5	40.6	40.9	40.7
Durable goods.....	41.7	40.9	41.1	41.1
Nondurable goods.....	41.2	40.0	40.4	40.0
Private service-providing.....	33.0	32.8	33.0	32.8
Trade, transportation, and utilities.....	34.3	34.0	34.4	34.1
Wholesale trade.....	39.3	38.7	38.9	38.8
Retail trade.....	30.7	30.2	30.8	30.5
Transportation and warehousing.....	37.8	38.0	38.3	37.9
Utilities.....	42.0	42.7	42.7	43.0
Information.....	36.8	36.0	36.1	36.1
Financial activities.....	37.4	37.1	37.2	37.3
Professional and business services.....	36.4	36.3	36.4	36.3
Private education and health services.....	32.6	32.5	32.7	32.6
Leisure and hospitality.....	24.8	24.4	24.6	24.2
Other services.....	31.2	31.3	31.3	31.4
<b>AVERAGE OVERTIME HOURS</b>				
Manufacturing.....	4.5	3.6	3.8	3.7
Durable goods.....	4.6	3.7	3.8	3.8
Nondurable goods.....	4.3	3.4	3.7	3.5

<sup>1</sup> Data relate to production employees in mining and logging and manufacturing, construction employees in construction, and nonsupervisory employees in the service-providing industries. These groups account for approximately four-fifths of the total employment on private nonfarm payrolls.

p Preliminary

NOTE: Data have been revised to reflect March 2022 benchmark levels and updated seasonal adjustment factors.

**ESTABLISHMENT DATA**

**Table B-8. Average hourly and weekly earnings of production and nonsupervisory employees on private nonfarm payrolls by industry sector, seasonally adjusted<sup>1</sup>**

Industry	Average hourly earnings				Average weekly earnings			
	Feb. 2022	Dec. 2022	Jan. 2023 <sup>p</sup>	Feb. 2023 <sup>p</sup>	Feb. 2022	Dec. 2022	Jan. 2023 <sup>p</sup>	Feb. 2023 <sup>p</sup>
Total private.....	\$26.98	\$28.21	\$28.29	\$28.42	\$922.72	\$953.50	\$964.69	\$963.44
Goods-producing.....	27.42	28.72	28.91	28.95	1,129.70	1,157.42	1,176.64	1,175.37
Mining and logging.....	31.97	33.41	33.39	33.14	1,502.59	1,560.25	1,589.36	1,550.95
Construction.....	31.63	33.22	33.42	33.57	1,271.53	1,305.55	1,333.46	1,339.44
Manufacturing.....	24.56	25.67	25.83	25.80	1,019.24	1,042.20	1,056.45	1,050.06
Durable goods.....	25.64	26.85	26.95	26.98	1,069.19	1,098.17	1,107.65	1,108.88
Nondurable goods.....	22.83	23.73	23.99	23.86	940.60	949.20	969.20	954.40
Private service-providing.....	26.88	28.10	28.17	28.31	887.04	921.68	929.61	928.57
Trade, transportation, and utilities.....	23.49	24.53	24.64	24.79	805.71	834.02	847.62	845.34
Wholesale trade.....	28.70	29.93	30.00	30.03	1,127.91	1,158.29	1,167.00	1,165.16
Retail trade.....	19.40	20.09	20.23	20.34	595.58	606.72	623.08	620.37
Transportation and warehousing.....	25.25	26.38	26.60	26.87	954.45	1,002.44	1,018.78	1,018.37
Utilities.....	40.95	43.38	43.35	43.52	1,719.90	1,852.33	1,851.05	1,871.36
Information.....	37.27	38.81	38.94	39.17	1,371.54	1,397.16	1,405.73	1,414.04
Financial activities.....	31.35	32.91	32.93	33.28	1,172.49	1,220.96	1,225.00	1,241.34
Professional and business services.....	31.96	33.31	33.46	33.62	1,163.34	1,209.15	1,217.94	1,220.41
Private education and health services.....	28.40	29.65	29.76	29.76	925.84	963.63	973.15	970.18
Leisure and hospitality.....	17.23	18.39	18.32	18.42	427.30	448.72	450.67	445.76
Other services.....	24.48	25.30	25.35	25.40	763.78	791.89	793.46	797.56

<sup>1</sup> Data relate to production employees in mining and logging and manufacturing, construction employees in construction, and nonsupervisory employees in the service-providing industries. These groups account for approximately four-fifths of the total employment on private nonfarm payrolls.

p Preliminary

NOTE: Data have been revised to reflect March 2022 benchmark levels and updated seasonal adjustment factors.

**ESTABLISHMENT DATA**

**Table B-9. Indexes of aggregate weekly hours and payrolls for production and nonsupervisory employees on private nonfarm payrolls by industry sector, seasonally adjusted<sup>1</sup>**

[2002=100]

Industry	Index of aggregate weekly hours <sup>2</sup>					Index of aggregate weekly payrolls <sup>3</sup>				
	Feb. 2022	Dec. 2022	Jan. 2023 <sup>p</sup>	Feb. 2023 <sup>p</sup>	Percent change from: Jan. 2023 - Feb. 2023 <sup>p</sup>	Feb. 2022	Dec. 2022	Jan. 2023 <sup>p</sup>	Feb. 2023 <sup>p</sup>	Percent change from: Jan. 2023 - Feb. 2023 <sup>p</sup>
Total private.....	119.7	121.1	122.6	122.1	-0.4	215.9	228.2	231.7	231.8	0.0
Goods-producing.....	94.1	94.8	96.0	95.8	-0.2	157.9	166.7	170.0	169.8	-0.1
Mining and logging.....	110.4	116.9	120.7	118.6	-1.7	205.3	227.1	234.3	228.6	-2.4
Construction.....	113.6	114.1	116.4	116.4	0.0	194.0	204.7	210.0	210.9	0.4
Manufacturing.....	84.3	85.0	85.8	85.4	-0.5	135.5	142.8	144.9	144.1	-0.6
Durable goods.....	85.0	86.4	86.9	87.0	0.1	136.1	144.8	146.2	146.5	0.2
Nondurable goods.....	83.2	82.5	83.5	82.6	-1.1	134.2	138.3	141.6	139.3	-1.6
Private service-providing.....	126.7	128.7	129.9	129.4	-0.4	233.6	248.0	251.1	251.3	0.1
Trade, transportation, and utilities.....	116.0	115.2	116.9	116.3	-0.5	194.8	202.0	205.9	206.0	0.0
Wholesale trade.....	109.3	110.1	110.8	110.8	0.0	185.2	194.5	196.2	196.4	0.1
Retail trade.....	103.2	100.7	103.0	102.4	-0.6	171.7	173.4	178.7	178.6	-0.1
Transportation and warehousing.....	165.5	167.6	169.6	168.2	-0.8	266.0	281.5	287.1	287.7	0.2
Utilities.....	94.2	96.4	96.1	96.5	0.4	161.0	174.5	174.0	175.3	0.7
Information.....	99.8	102.1	101.6	100.9	-0.7	184.1	196.1	195.8	195.7	-0.1
Financial activities.....	119.1	119.5	120.1	120.5	0.3	229.7	242.0	243.3	246.7	1.4
Professional and business services.....	145.3	147.0	147.6	147.3	-0.2	276.2	291.2	293.7	294.6	0.3
Private education and health services..	145.3	149.6	151.3	151.4	0.1	272.3	292.8	297.3	297.3	0.0
Leisure and hospitality.....	122.2	125.9	128.0	126.2	-1.4	239.0	263.0	266.4	264.0	-0.9
Other services.....	100.3	103.6	103.9	104.4	0.5	178.8	191.0	191.9	193.2	0.7

<sup>1</sup> Data relate to production employees in mining and logging and manufacturing, construction employees in construction, and nonsupervisory employees in the service-providing industries. These groups account for approximately four-fifths of the total employment on private nonfarm payrolls.

<sup>2</sup> The indexes of aggregate weekly hours are calculated by dividing the current month's estimates of aggregate hours by the corresponding 2002 annual average aggregate hours. Aggregate hours estimates are the product of estimates of average weekly hours and employment.

<sup>3</sup> The indexes of aggregate weekly payrolls are calculated by dividing the current month's estimates of aggregate weekly payrolls by the corresponding 2002 annual average aggregate weekly payrolls. Aggregate payrolls estimates are the product of estimates of average hourly earnings, average weekly hours, and employment.

p Preliminary

NOTE: Data have been revised to reflect March 2022 benchmark levels and updated seasonal adjustment factors.