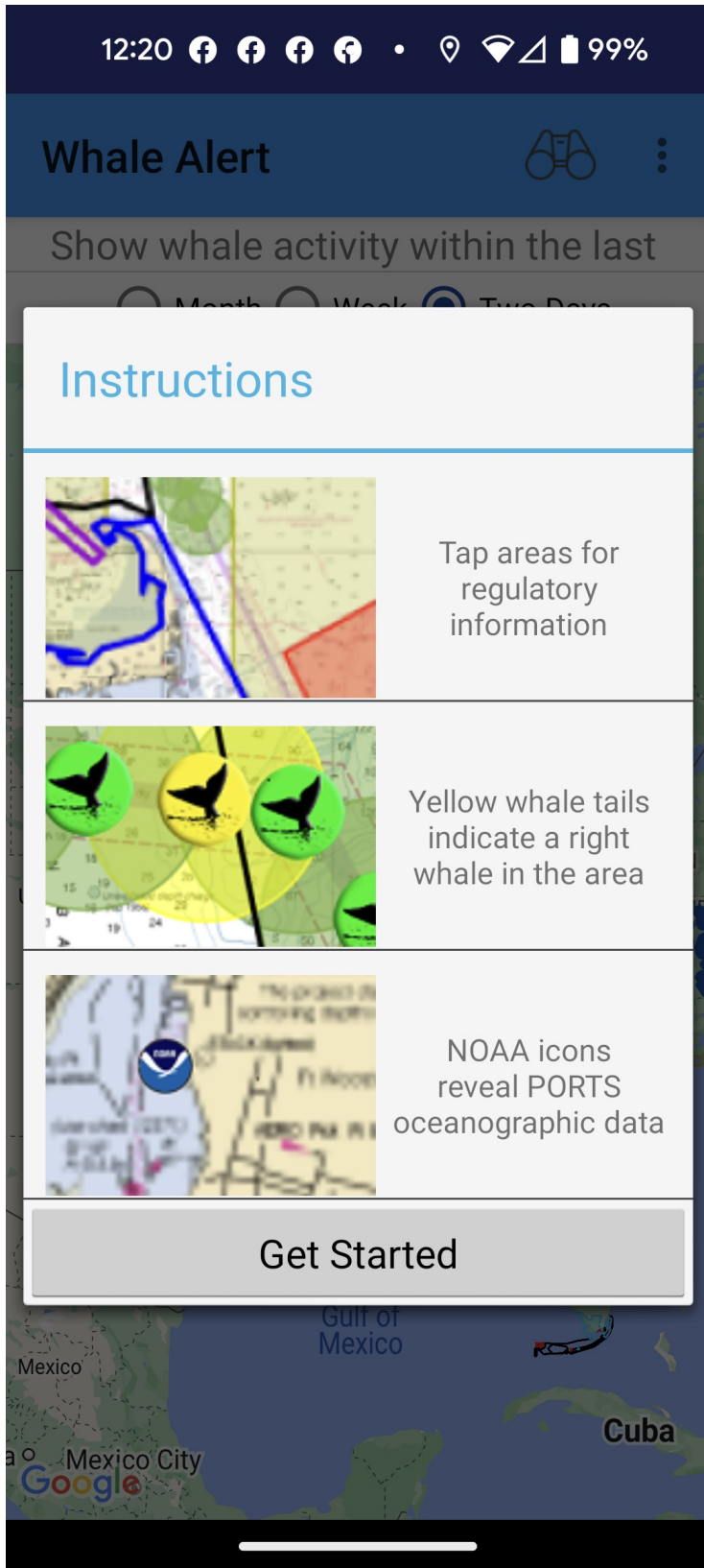


Whale Alert Screenshots from smartphone app

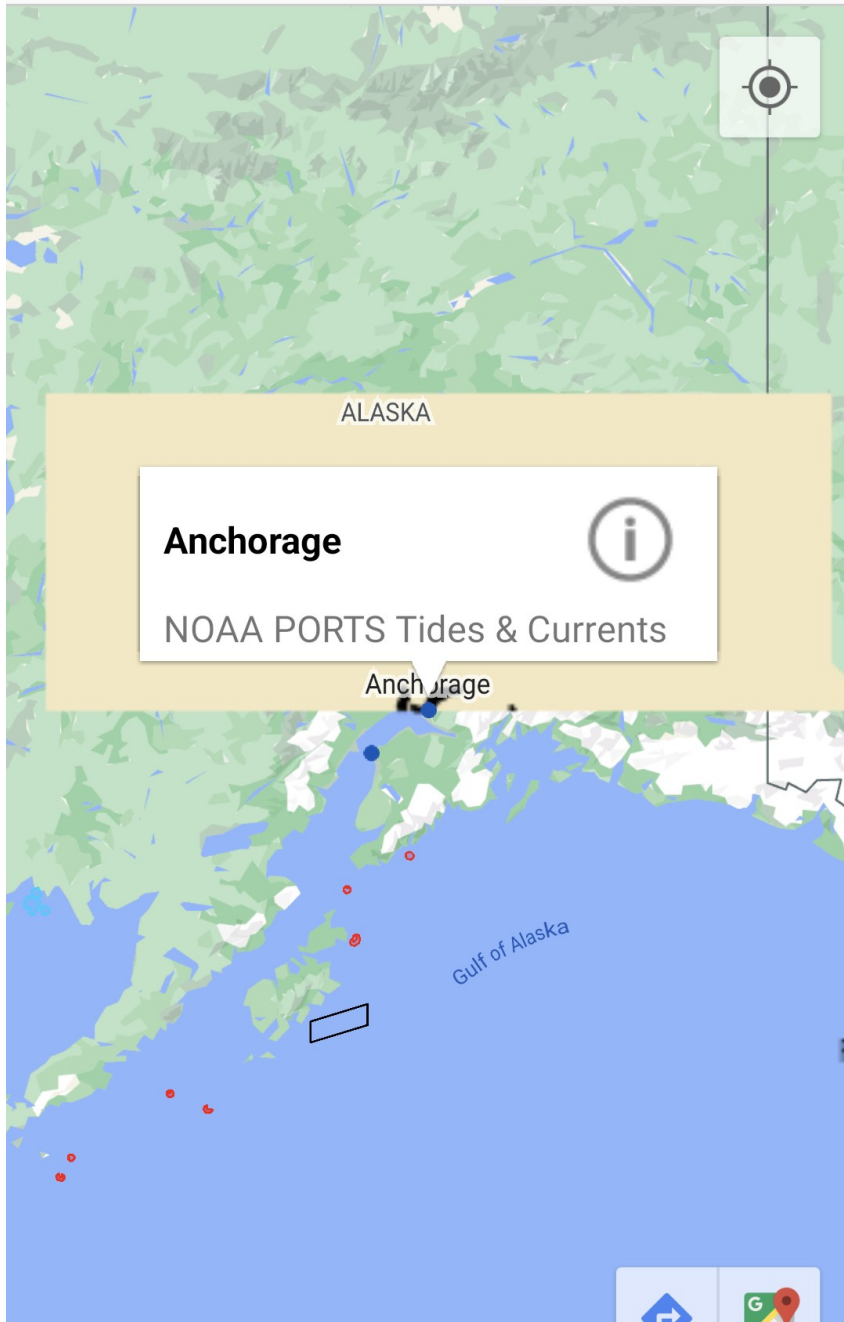


Whale Alert



Show whale activity within the last

- Month Week Two Days



Whale Alert

Anchorage

Last Reading: 01.05.23 12:12

water level 3.73 m
decreasing

water temperature 30.38 F

air temperature 26.24 F

wind speed 2.3 kts

wind direction NNE

wind gust 3.1 kts

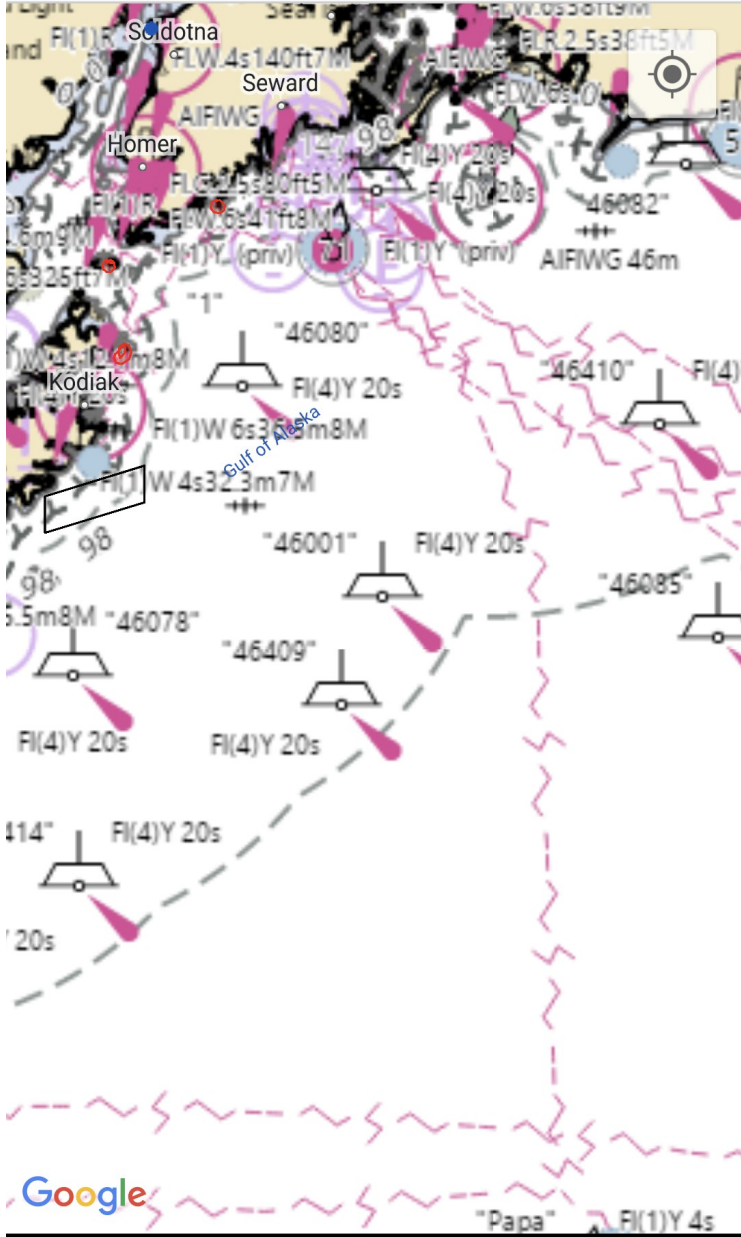
Barometric Pressure 29.51
increasing

Whale Alert



Show whale activity within the last

Month Week Two Days

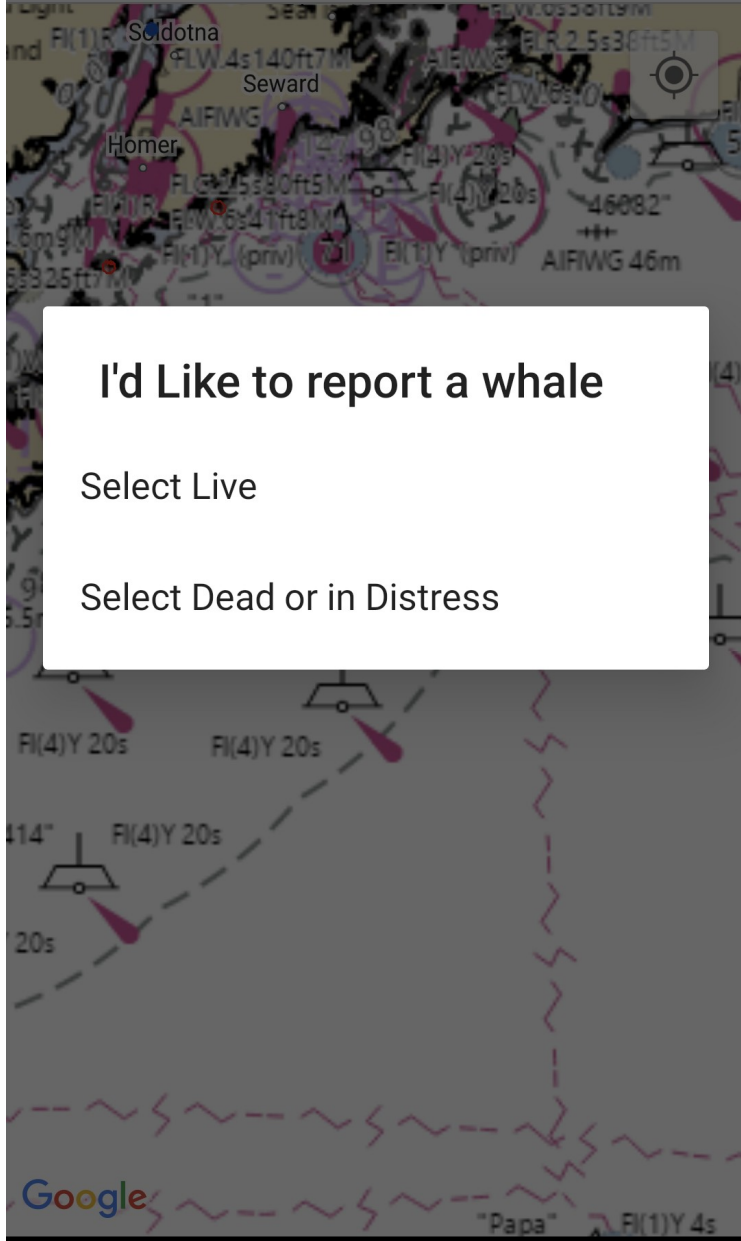


Whale Alert



Show whale activity within the last

Month Week Two Days



I'd Like to report a whale

Select Live

Select Dead or in Distress

← **Dead Or Injured**

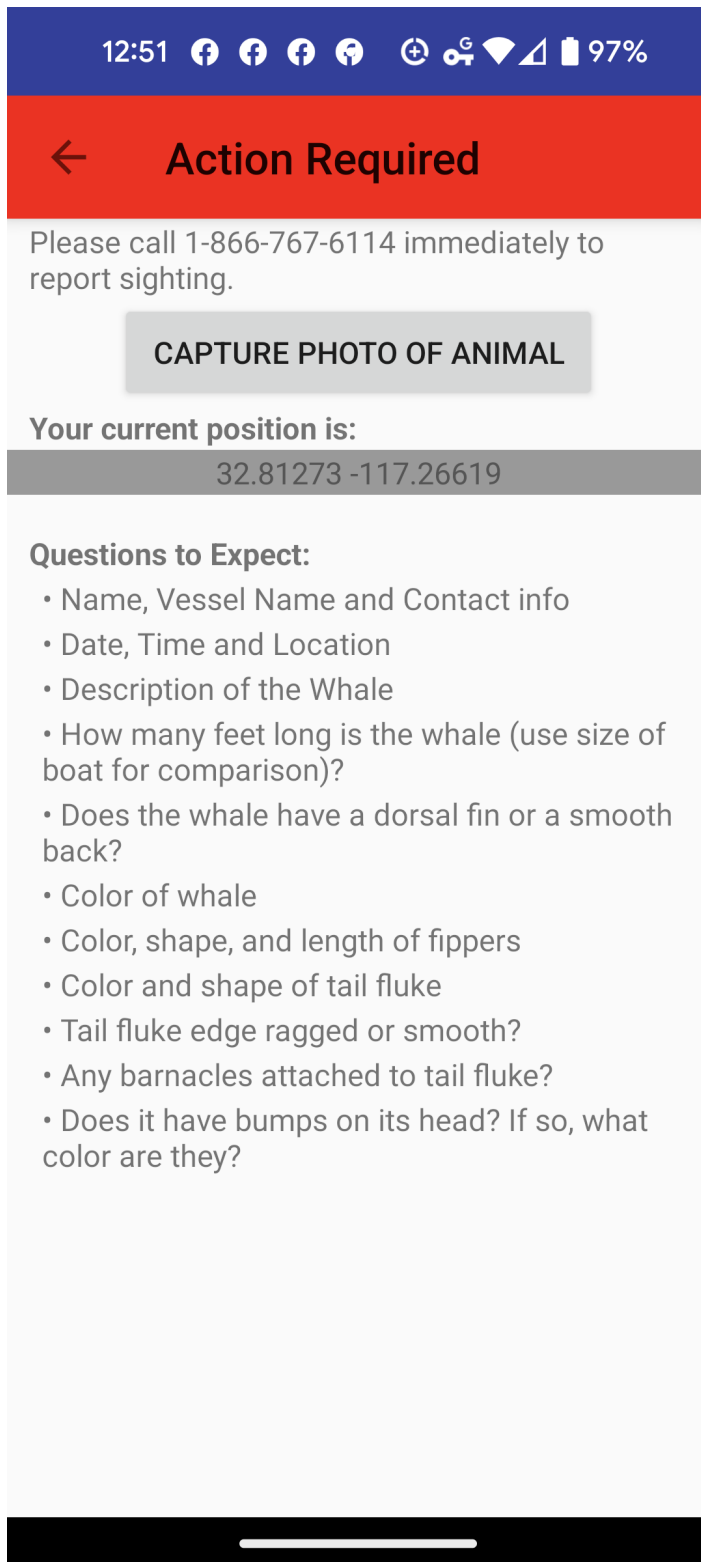
Is the whale dead, entangled in fishing gear, or stranded?

Dead Or Injured
[HELP IDENTIFYING DEAD WHALES](#)

Entangled
[HELP IDENTIFYING ENTANGLED WHALES](#)

Stranded
[HELP IDENTIFYING STRANDED WHALES](#)

For dead or injured whale



The image shows a mobile application interface for reporting a whale sighting. At the top, there is a dark blue status bar with the time 12:51 and various system icons. Below this is a red header bar with a white back arrow and the text "Action Required". The main content area is white and contains the following elements: a text prompt to call 1-866-767-6114, a grey button labeled "CAPTURE PHOTO OF ANIMAL", a section titled "Your current position is:" with a grey bar showing coordinates "32.81273 -117.26619", and a list of questions to expect. At the bottom, there is a black bar with a white horizontal line, likely representing a home indicator.

12:51

← **Action Required**

Please call 1-866-767-6114 immediately to report sighting.

CAPTURE PHOTO OF ANIMAL

Your current position is:

32.81273 -117.26619

Questions to Expect:

- Name, Vessel Name and Contact info
- Date, Time and Location
- Description of the Whale
- How many feet long is the whale (use size of boat for comparison)?
- Does the whale have a dorsal fin or a smooth back?
- Color of whale
- Color, shape, and length of flippers
- Color and shape of tail fluke
- Tail fluke edge ragged or smooth?
- Any barnacles attached to tail fluke?
- Does it have bumps on its head? If so, what color are they?

For entangled whale

The screenshot shows a mobile application interface. At the top, a dark blue status bar displays the time 12:52, four social media icons (Facebook, Instagram, Twitter, YouTube), and system icons for cellular signal, Wi-Fi, and battery at 97%. Below this is a red header bar with a white back arrow and the text "Action Required". The main content area is white and contains the following text: "whales within 500 yards (1500 feet).", "Please call 1-877-SOS-WHALE (1-877-767-9425) or hail the U.S. Coast Guard on VHF Ch. 16 immediately to report sighting.", a grey button labeled "CAPTURE PHOTO OF ANIMAL", and the text "Your current position is:" followed by a grey bar containing the coordinates "32.81273 -117.26619". Below this is a section titled "Do not attempt to remove gear!" with a paragraph explaining that experts handle disentanglement. It then asks users to take photos and report additional information, followed by a list of seven questions about the whale's appearance and gear. At the bottom, a black bar contains a white horizontal line representing a home indicator.

12:52 97%

← **Action Required**

whales within 500 yards (1500 feet).

Please call 1-877-SOS-WHALE (1-877-767-9425) or hail the U.S. Coast Guard on VHF Ch. 16 immediately to report sighting.

CAPTURE PHOTO OF ANIMAL

Your current position is:

32.81273 -117.26619

Do not attempt to remove gear!

There is a team of experts who disentangle whales

Take photos and video if possible and please report this additional information:

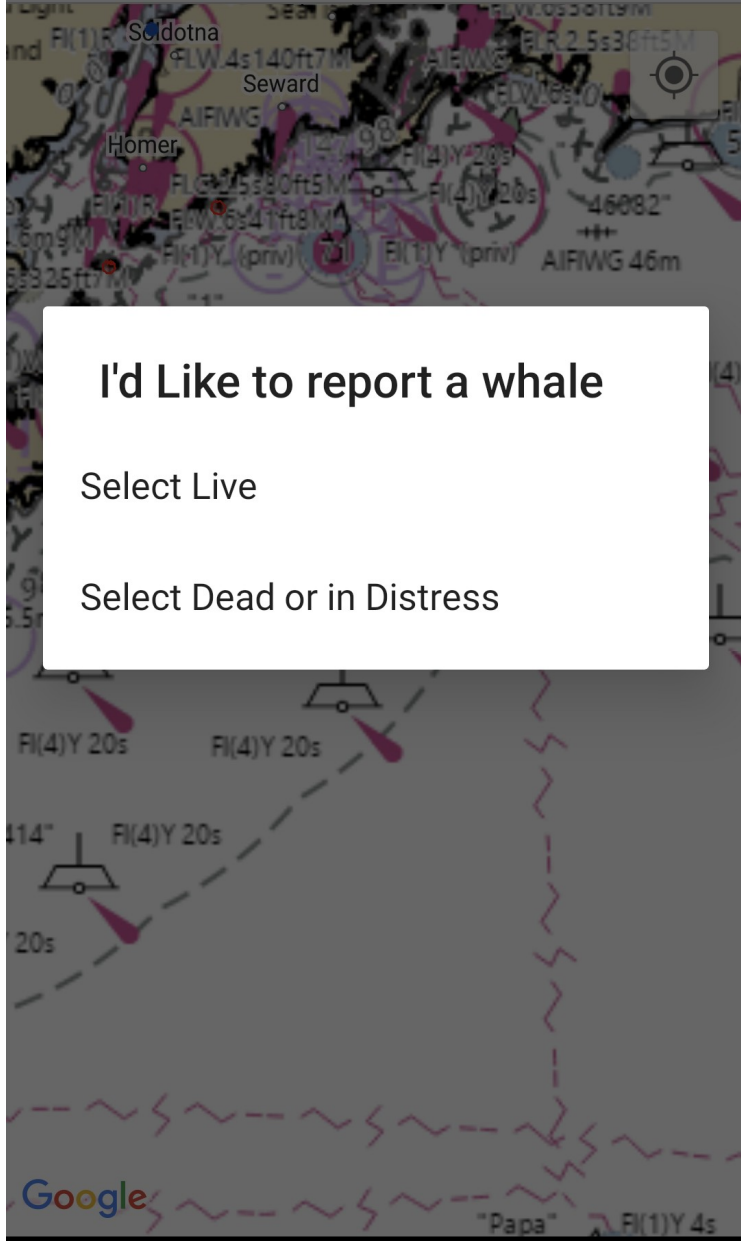
- Do you see a visible spout during exhale?
- Does it have a dorsal fin?
- What color and shape are the flippers?
- Does it have pumps on its head? If so, what color are they?
- How many feet long is the whale (use size of boat for comparison)?
- Do you see throat grooves (under the mouth extending to the belly)?
- If entangled, is the whale free swimming or anchored?
- Describe any other specific info on key body parts including visible injuries (flippers, tail, and mouth)
- Describe any gear observed (buoys and line colors, buoy numbers, etc.)

Whale Alert



Show whale activity within the last

Month Week Two Days



I'd Like to report a whale

Select Live

Select Dead or in Distress



Report Live

SEND

Species: Unspecified >

Select number of whales sighted1 >

Date: 1/5/2023 >

Time: 12:24 >

Add Photo: None(s) >

Comments: >

Location: 32.81273 -117.26619 >

Your Name: *Required >

Email: *Required >

Phone: *Optional >