

Ecosystem Service Horizon Scan - Data Call

Please answer the questions that follow as best as possible to help identify and prioritize ecosystem service research and policy needs related to shellfish and seaweed aquaculture. For examples, you may refer to existing entries here:

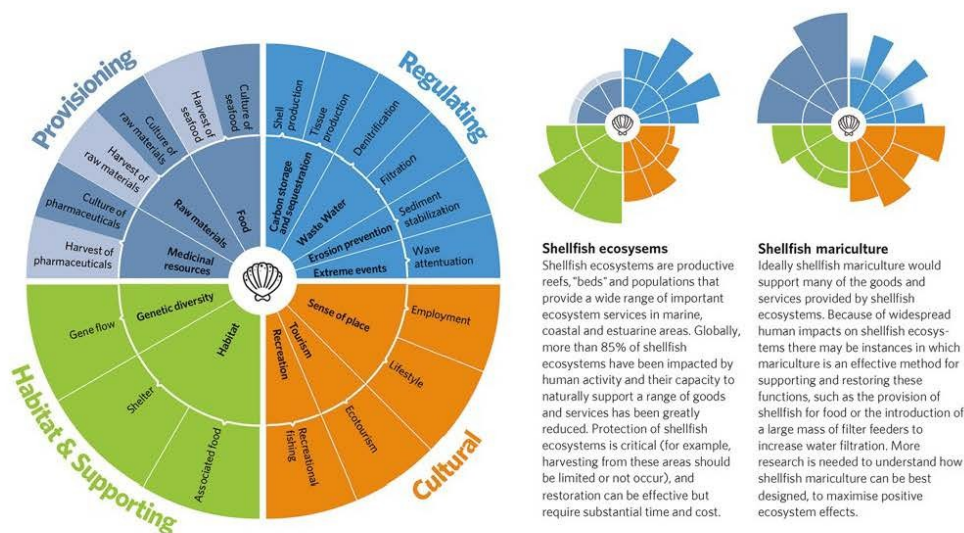
<https://tinyurl.com/eshorizonscan>

Note: to view the linked document, access will need to be granted. We will respond to your request as soon as possible, but please understand it requires someone to be at their email and thus may not be immediate. Those invited via email to take part should already have access granted via the email account you were contacted through.

The overall form includes 4 sections, and we expect it should take less than 25 minutes to complete. You have the option to go back and edit responses before submitting the form.

If you have any questions, please reach out to: Adriane Michaelis (adriane.michaelis@noaa.gov).

For reference: examples of ecosystem services that can be provided by shellfish or seaweed (Alleway et al., 2019). To zoom in on the image, use this link (<https://academic.oup.com/view-large/figure/129750105/biy137fig1.jpg>) or access the full paper at: doi.org/10.1093/biosci/biy137.



Directions for aquaculture ecosystem services work

1. What do you see as the greatest research, policy, and/or management needs related to shellfish/seaweed aquaculture and ecosystem services? Briefly describe. (Please enter multiple ideas/topics if you wish. If your thoughts extend beyond the character limit, please email your response to adriane.michaelis@noaa.gov.)

2. Are there other dimensions or directions of aquaculture ecosystem services that you see worth pursuing (e.g., ecosystem services associated with finfish aquaculture)? (Please enter multiple ideas/topics if you wish. If your thoughts extend beyond the character limit, please email your response to adriane.michaelis@noaa.gov.)

**General
Information**

Please provide contact information below. Identifiable information will not be shared with your entries or visible to anyone beyond the organizers of this data call.

3. Please provide your name (first and last).

4. What is your professional title? (e.g., research scientist, oyster farmer, resource manager)

5. What is your professional affiliation? (i.e., who do you work for?)

6. What NOAA Fisheries region are you based in?

<https://www.fisheries.noaa.gov/regions>

Mark only one oval.

- Alaska
- New England/Mid-Atlantic
- Pacific Islands
- Southeast
- West Coast
- NA. I am not based in any of these regions.

7. What state are you based in?

Mark only one oval.

- Alabama
- Alaska
- Arizona
- Arkansas
- California
- Colorado
- Connecticut
- Delaware
- Florida
- Georgia
- Hawaii
- Idaho
- Illinois
- Indiana
- Iowa
- Kansas
- Kentucky
- Louisiana
- Maine
- Maryland
- Massachusetts
- Michigan
- Minnesota
- Mississippi
- Missouri
- Montana
- Nebraska
- Nevada
- New Hampshire
- New Jersey

10/26/22, 11:48 AM

Ecosystem Service Horizon Scan - Data Call

- New Jersey
- New Mexico
- New York
- North Carolina
- North Dakota
- Ohio
- Oklahoma
- Oregon
- Pennsylvania
- Rhode Island
- South Carolina
- South Dakota
- Tennessee
- Texas
- Utah
- Vermont
- Virginia
- Washington
- West Virginia
- Wisconsin
- Wyoming
- NA. I am based in a US territory.
- NA. I am not based in the US.

Area of work

8. What is the geographic scope of your current work? Provide the scale and detail you feel is appropriate (e.g., state, regional, national).

9. What is the geographic scope of your knowledge? Provide the scale and detail you feel is appropriate (e.g., state, regional, national).

10. Do you work with shellfish and/or seaweed? (Select both if both apply.)

Check all that apply.

- Shellfish
 Seaweed

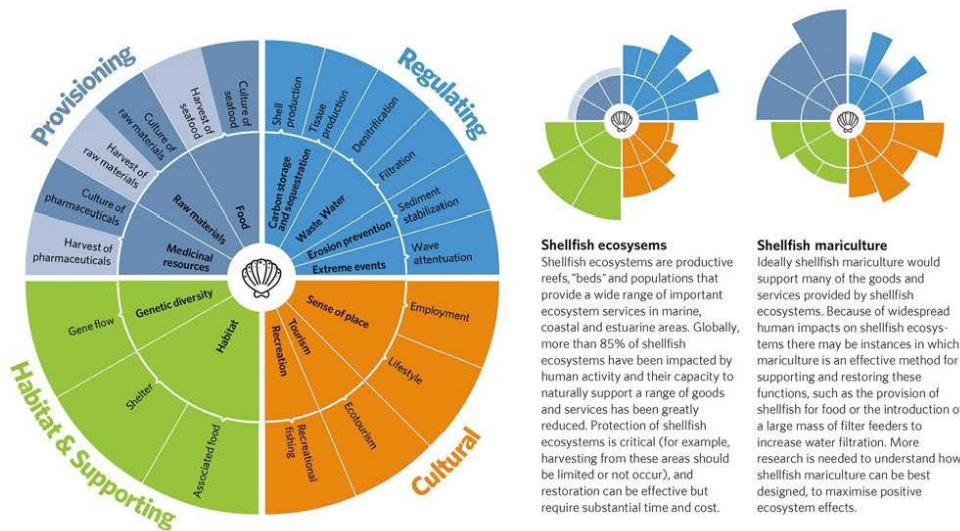
11. What species group or species do you work with, or are within your purview? (List all that apply)

12. Does your work focus on aquaculture and/or restoration? (Select both if both apply.)

Check all that apply.

- Aquaculture
- Restoration

Examples of ecosystem services that can be provided by shellfish or seaweed (Alleway et al., 2019). To zoom in on the image, use this link (<https://academic.oup.com/view-large/figure/129750105/biy137fig1.jpg>) or access the full paper at: doi.org/10.1093/biosci/biy137.



Shellfish ecosystems
Shellfish ecosystems are productive reefs, "beds" and populations that provide a wide range of important ecosystem services in marine, coastal and estuarine areas. Globally, more than 85% of shellfish ecosystems have been impacted by human activity and their capacity to naturally support a range of goods and services has been greatly reduced. Protection of shellfish ecosystems is critical (for example, harvesting from these areas should be limited or not occur), and restoration can be effective but require substantial time and cost.

Shellfish mariculture
Ideally shellfish mariculture would support many of the goods and services provided by shellfish ecosystems. Because of widespread human impacts on shellfish ecosystems there may be instances in which mariculture is an effective method for supporting and restoring these functions, such as the provision of shellfish for food or the introduction of a large mass of filter feeders to increase water filtration. More research is needed to understand how shellfish mariculture can be best designed, to maximise positive ecosystem effects.

13. What categories of ecosystem service do you focus on in your work, or do you find most relevant? (Select as many as relevant) For descriptions/examples of each category see the figure above.

Check all that apply.

- Cultural ecosystem services
- Provisioning ecosystem services
- Regulating ecosystem services
- Supporting ecosystem services (includes habitat)

14. More specifically, describe or provide detail on your ecosystem service(s) of interest (e.g., for regulating - aquaculture for nutrient removal; for cultural - ecotourism).

15. If you have any related publications or data sources to share re: aquaculture ecosystem services, please list or link them here.

16. Are there any other comments you wish to share related to this data call?

Thank
you
for
your
input!

This data call will remain open for 30 days. If you wish to update your entries, you may return to the form to do so during this time frame. At the conclusion of 30 days, we will synthesize the input, reach out if there are any questions, and invite you to join a virtual webinar to discuss the priorities identified. Thank you again for your time and expertise!

This content is neither created nor endorsed by Google.

Google Forms