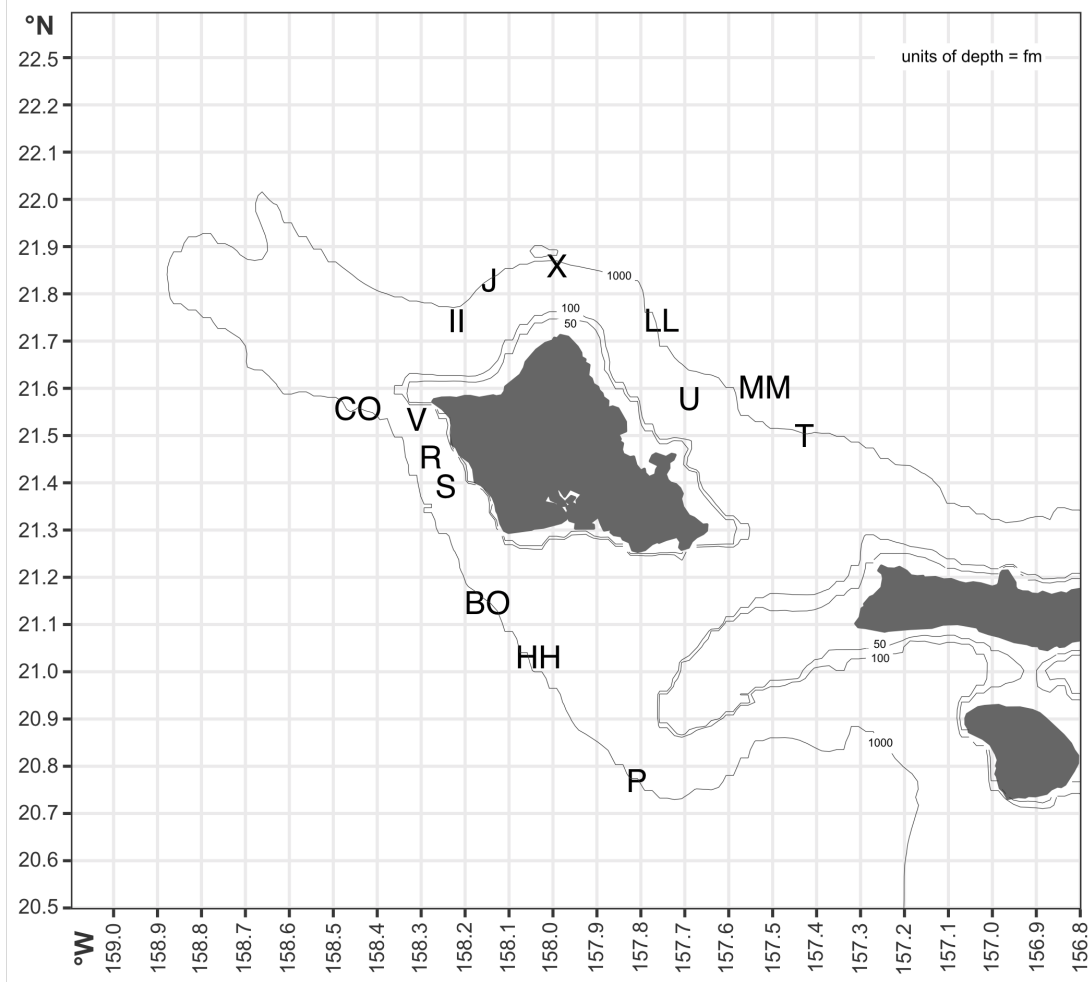


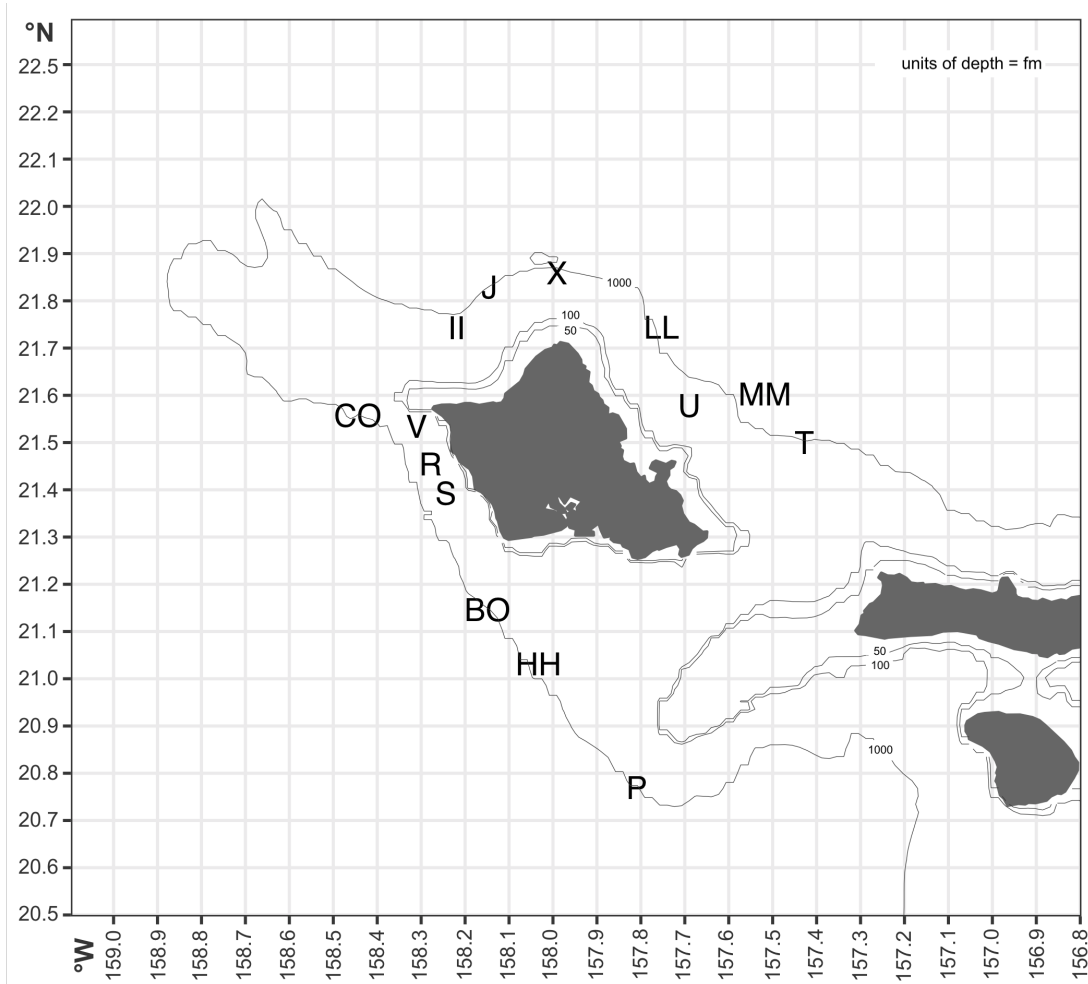
TRIP ID	DATE	PIER/HARBOR	<p>Location is confidential and we'll treat it as such.</p> <p>Please indicate your catch location by providing Lat-Long (preferred) or circling the FAD or filling in the gridded map on the back of this sheet.</p>			
(OPTIONAL) FISHER	CONTACT					
CATCH DETAILS						
BOTTOM DEPTH (units)	POSITION (LAT-LONG, near-FAD, GENERAL)		BAIT/CHUM (WHAT?)		RUBBISH/DEBRIS?	
	<p>Please indicate LAT-LONG of catch. If unable to, please describe location (direction and distance from shore) and/or circle FAD or fill in grid boxes on the map on the back of this sheet.</p>					
TAG ID	SPECIES	SIZE (units)	CIRCLE ONE	WEIGHT (units)	SEX	Other Information
			Fork Length	Total Length		
			FL	TL		
			FL	TL		
			FL	TL		
			FL	TL		

TRIP ID	DATE	PIER/HARBOR	<p>Location is confidential and we'll treat it as such.</p> <p>Please indicate your catch location by providing Lat-Long (preferred) or circling the FAD or filling in the gridded map on the back of this sheet.</p>			
(OPTIONAL) FISHER	CONTACT					
CATCH DETAILS						
BOTTOM DEPTH (units)	POSITION (LAT-LONG, near-FAD, GENERAL)		BAIT/CHUM (WHAT?)		RUBBISH/DEBRIS?	
	<p>Please indicate LAT-LONG of catch. If unable to, please describe location (direction and distance from shore) and/or circle FAD or fill in grid boxes on the map on the back of this sheet.</p>					
TAG ID	SPECIES	SIZE (units)	CIRCLE ONE	WEIGHT (units)	SEX	Other Information
			Fork Length	Total Length		
			FL	TL		
			FL	TL		
			FL	TL		
			FL	TL		



Please indicate your catch location by providing Lat-Long (preferred) or circling the FAD, marking location, or filling in the relevant squares on the gridded map.

Mahalo!



Please indicate your catch location by providing Lat-Long (preferred) or circling the FAD, marking location, or filling in the relevant squares on the gridded map.

Mahalo!