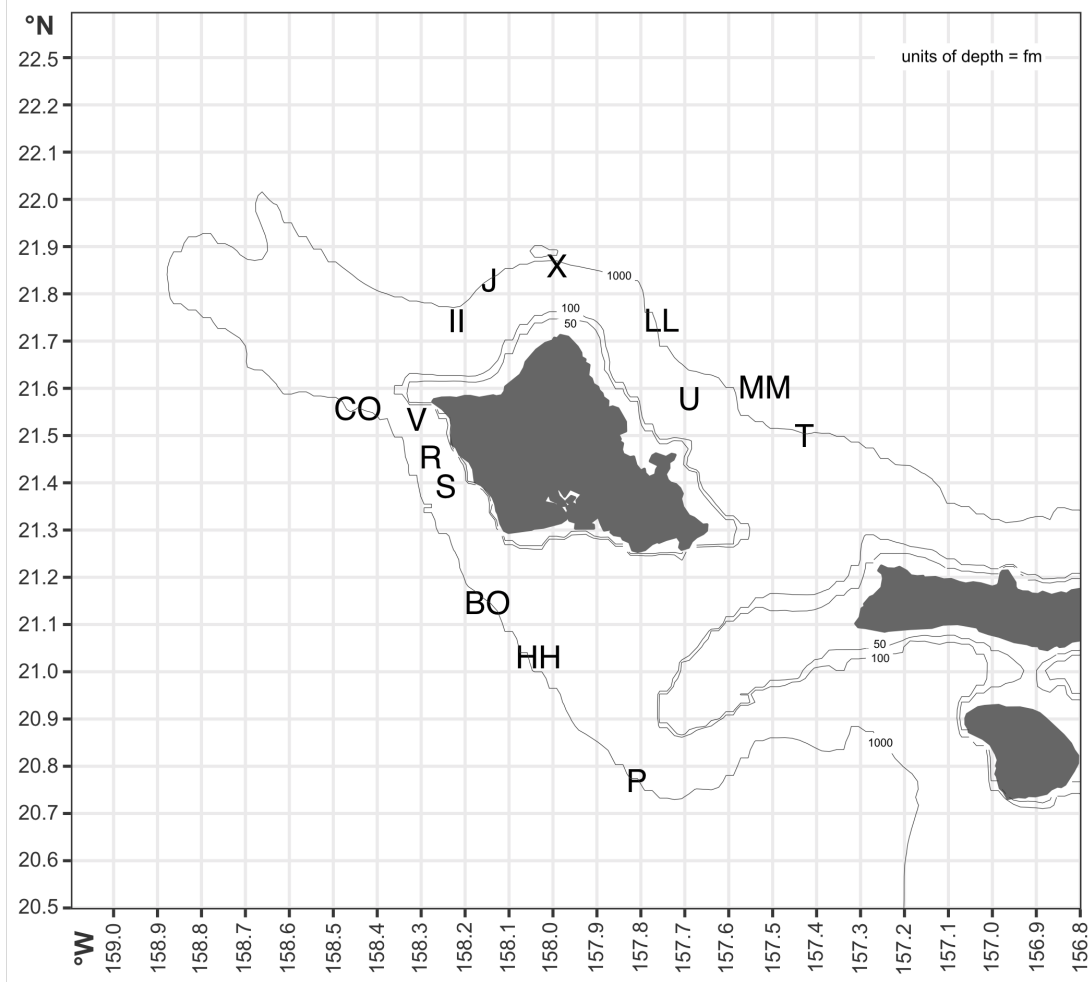


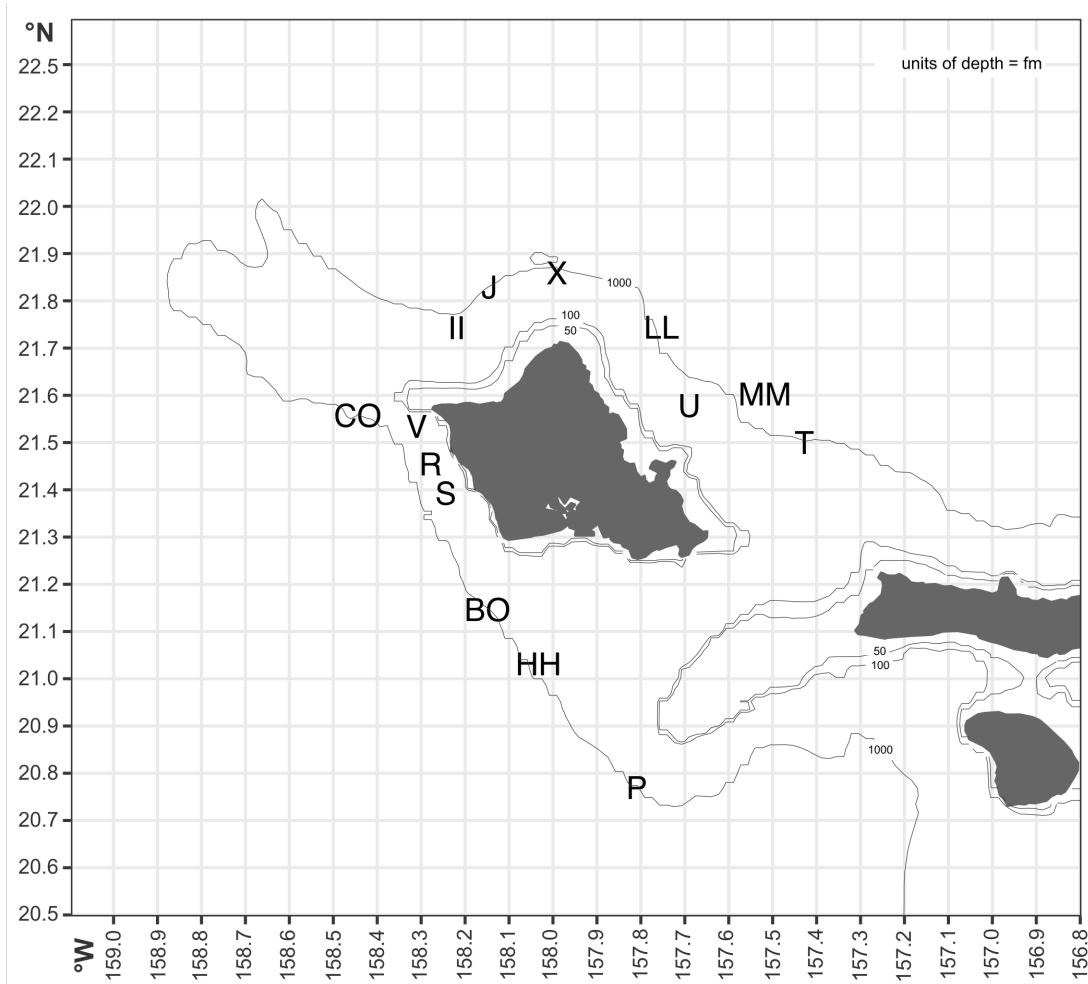
<b>TRIP ID</b>	<b>DATE</b>	<b>PIER/HARBOR</b>	<p>Location is confidential and we'll treat it as such.</p> <p><b>Please indicate your catch location by providing Lat-Long (preferred) or circling the FAD or filling in the gridded map on the back of this sheet.</b></p>			
<b>(OPTIONAL) FISHER</b>	<b>CONTACT</b>					
<b>CATCH DETAILS</b>						
<b>BOTTOM DEPTH (units)</b>	<b>POSITION (LAT-LONG, near-FAD, GENERAL)</b>		<b>BAIT/CHUM (WHAT?)</b>		<b>RUBBISH/DEBRIS?</b>	
	<p>Please indicate LAT-LONG of catch. If unable to, please describe location (direction and distance from shore) and/or circle FAD or fill in grid boxes on the map on the back of this sheet.</p>					
<b>TAG ID</b>	<b>SPECIES</b>	<b>SIZE (units)</b>	<b>CIRCLE ONE</b>	<b>WEIGHT (units)</b>	<b>SEX</b>	<b>Other Information</b>
			Fork Length	Total Length		
			FL	TL		
			FL	TL		
			FL	TL		
			FL	TL		

<b>TRIP ID</b>	<b>DATE</b>	<b>PIER/HARBOR</b>	<p>Location is confidential and we'll treat it as such.</p> <p><b>Please indicate your catch location by providing Lat-Long (preferred) or circling the FAD or filling in the gridded map on the back of this sheet.</b></p>			
<b>(OPTIONAL) FISHER</b>	<b>CONTACT</b>					
<b>CATCH DETAILS</b>						
<b>BOTTOM DEPTH (units)</b>	<b>POSITION (LAT-LONG, near-FAD, GENERAL)</b>		<b>BAIT/CHUM (WHAT?)</b>		<b>RUBBISH/DEBRIS?</b>	
	<p>Please indicate LAT-LONG of catch. If unable to, please describe location (direction and distance from shore) and/or circle FAD or fill in grid boxes on the map on the back of this sheet.</p>					
<b>TAG ID</b>	<b>SPECIES</b>	<b>SIZE (units)</b>	<b>CIRCLE ONE</b>	<b>WEIGHT (units)</b>	<b>SEX</b>	<b>Other Information</b>
			Fork Length	Total Length		
			FL	TL		
			FL	TL		
			FL	TL		
			FL	TL		



Please indicate your catch location by providing Lat-Long (preferred) or circling the FAD, marking location, or filling in the relevant squares on the gridded map.

Mahalo!



Please indicate your catch location by providing Lat-Long (preferred) or circling the FAD, marking location, or filling in the relevant squares on the gridded map.

Mahalo!