

WHY YOUR  
PARTICIPATION  
IS IMPORTANT

NLSY  
97

## Your experiences matter!

In early 2021, we invited you to participate in a brief online survey about how the COVID-19 pandemic has affected everyday Americans.

Your participation has played a role in helping researchers understand the pandemic's impact on employment, telework, and remote schooling.

*Please contact us with any questions or comments:*



Call: 877-504-1086

Text with your full name to: 312-835-1905

Email: [nlsy97@norc.org](mailto:nlsy97@norc.org)

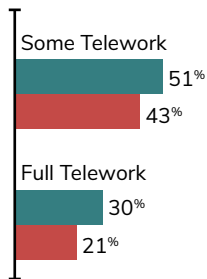
Visit: [www.bls.gov/respondents/nls/](http://www.bls.gov/respondents/nls/)



# The NLSY 97 COVID-19 survey findings

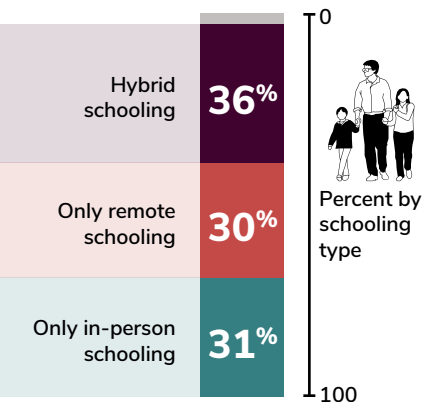
Women were  
**more likely  
to telework**  
than men.

■ Women ■ Men

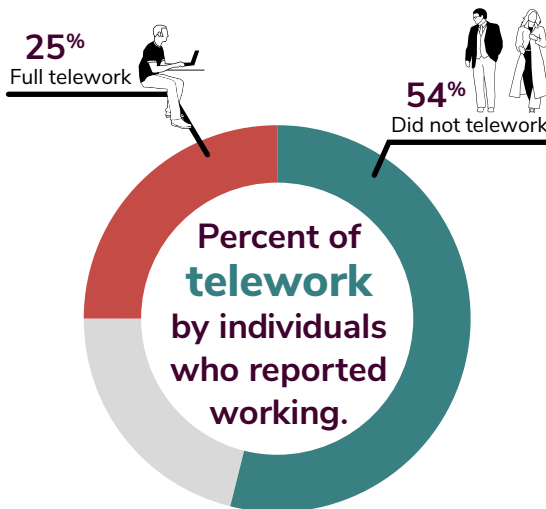


Individuals whose jobs prior to the pandemic were conducive to telework were **more likely to be working** the week before the COVID-19 survey interview.

Percentage of  
**schooling type** for  
individuals with children  
enrolled in K–12:



**Researchers value your  
contributions!**



Alison Aughinbaugh, Jeffrey A. Groen, Mark A. Loewenstein, Donna S. Rothstein, and Hugette Sun, "Employment, telework, and child remote schooling from February to May 2021: evidence from the National Longitudinal Survey of Youth 1997," Monthly Labor Review, U.S. Bureau of Labor Statistics, March 2023, <https://doi.org/10.21916/mlr.2023.5>