

Instructions for Editing Values for the Workforce Development Participant Tracking Form

The Workforce Development Participant Tracking Form contains the following visible worksheets:

- 1) Instructions – basic guidance on how to use the worksheet and where to send it.
- 2) Participant Information – designed to capture information for each Public Lands Corps participant engaged.
- 3) Project Information – used to collect information for each of the projects
- 4) Project Tracking – used to track the number of hours each participant has worked on each of the projects tracked.

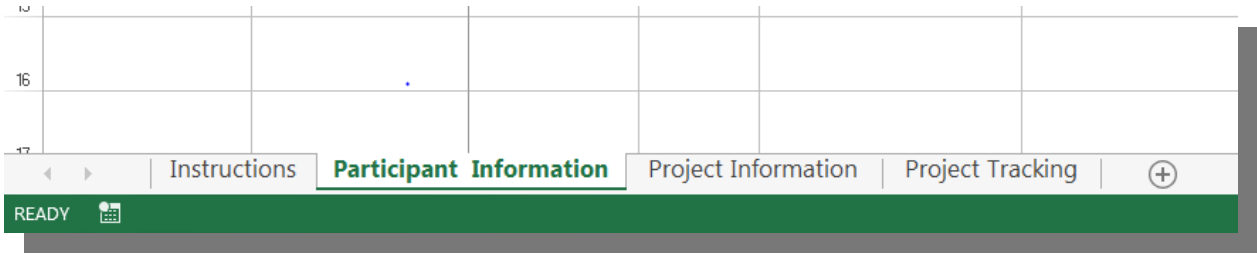
There is also a hidden worksheets that contain information for data validation.

- 1) Lists – Contains the values used for data validation – this sheet is normally hidden

The visible worksheets use a feature called Data Validation to ensure that the values entered for certain fields are valid. The fields that currently user validation are as follows.

- Gender
- Ethnicity
- Race - 1
- Race - 2
- Education Level Completed -1
- Post-secondary Institution Name - 1
- Post-secondary Institution Name - 2
- Military/Veteran Status
- Disability Status
- AmeriCorps Status
- Legal Applicant or Cooperator
- Federal Agency
- Agency Office
- Agency Unit (location)
- Position Type
- Type of Work
- FS Unit (Location)
- Hiring Certificate Type
- Hiring Certificate Status

The available values for these fields are listed on a hidden worksheet titles Lists. This worksheet may be unhidden by right clicking on any of the tabs at the bottom of the worksheet and selecting “Unhide” from the menu that appears and then clicking on “Lists” to unhide.



The basic process for modifying these values is as follows:

1. Unhide the Lists worksheet:
 - a. Right click on any tab at the bottom of the workbook.
 - b. Select **Unhide** from the pop up menu
 - c. Select **Lists** from the available hidden worksheets
2. Once the Lists Worksheet is unhidden you may change any of the values used for validation.

Drop Down Menus - List of Values

Participant				
Gender	Ethnicity	Race - 1	Race - 2	Edu C
Male	Hispanic or Latino	American Indian or Alaskan Native	American Indian or Alaskan Native	Some High
Female	Not Hispanic or Latino	Asian	Asian	High Scho
Other Identity	No Identity	Black or African American	Black or African American	Some Coll
		White	White	Associates
		Native Hawaiian	Native Hawaiian	BA/BS De
		Other Pacific Islander	Other Pacific Islander	Professio
		Other Race	Other Race	
			N/A	

3. Locate the column that is associated with the validation values you want to change. Let's say that we want to add an additional selection to the Gender validation field for "Declines to state". You can simply click on the cell beneath the last entry, type "**Declines to state**" and press the return key. This value will be listed in the column for Gender as shown below.

Drop Down Menus - List of Values

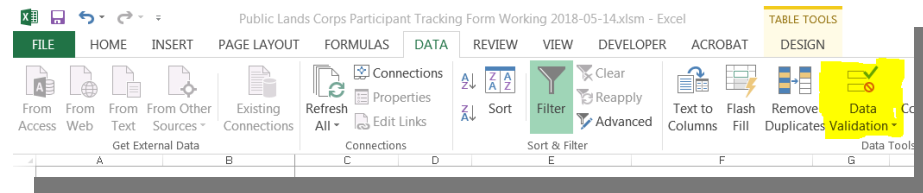
Participant				
Gender	Ethnicity	Race - 1	Race - 2	Edu C
Male	Hispanic or Latino	American Indian or Alaskan Native	American Indian or Alaskan Native	Some High
Female	Not Hispanic or Latino	Asian	Asian	High Scho
Other Identity	No Identity	Black or African American	Black or African American	Some Coll
Declines to State		White	White	Associates
		Native Hawaiian	Native Hawaiian	BA/BS De
		Other Pacific Islander	Other Pacific Islander	Professio
		Other Race	Other Race	
			N/A	

4. Once you have the new/modified values in the Lists worksheet, you will need to modify the data validation rules on the entry worksheets (Participant Information, Project Information, and Project Tracking) as applicable.
 - a. In our example we will continue to use the Gender field, so you would click on the Participant Information tab and select the first row below title Gender in the worksheet as shown below.

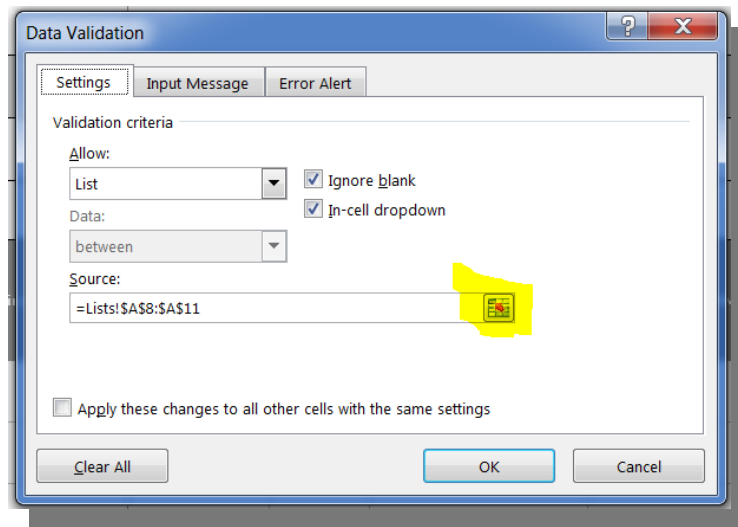
PUBLIC LANDS CORPS PARTICIPANT INFORMATION							
Partner:		Submission Date:					
Last Name	First Name	Middle Initial	Permanent Residence Zip code	Email Address	Date of Birth MM/DD/YYYY	Gender	Ethnicity

Use dropdown menu to select participant gender.

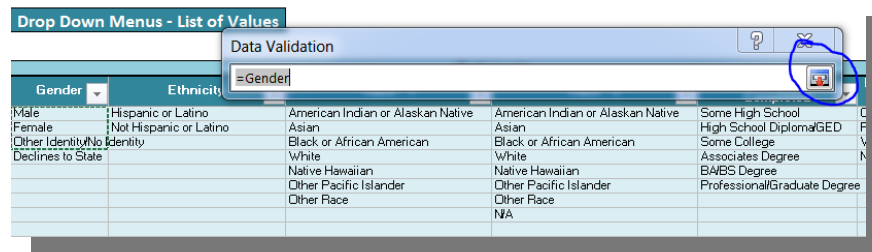
- b. Press and hold the **SHIFT** key, then while still pressing the **SHIFT** key, also press the **END** key, followed by the **DOWN ARROW**. This will select all of the cells that we want to modify the data validation for.
- c. Next select **DATA** from the menu at the top of the workbook, and data validation (highlighted in yellow below) from the Data Tools submenu displayed.



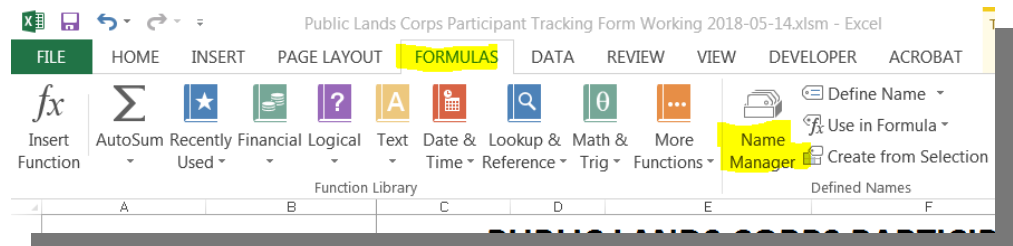
- d. The Data Validation menu will appear, click on the icon to the right of the Source field, highlighted in yellow below:



- e. This will then take you to the List sheets and display the current selection for validation. We see that the validation is using a range called Gender.

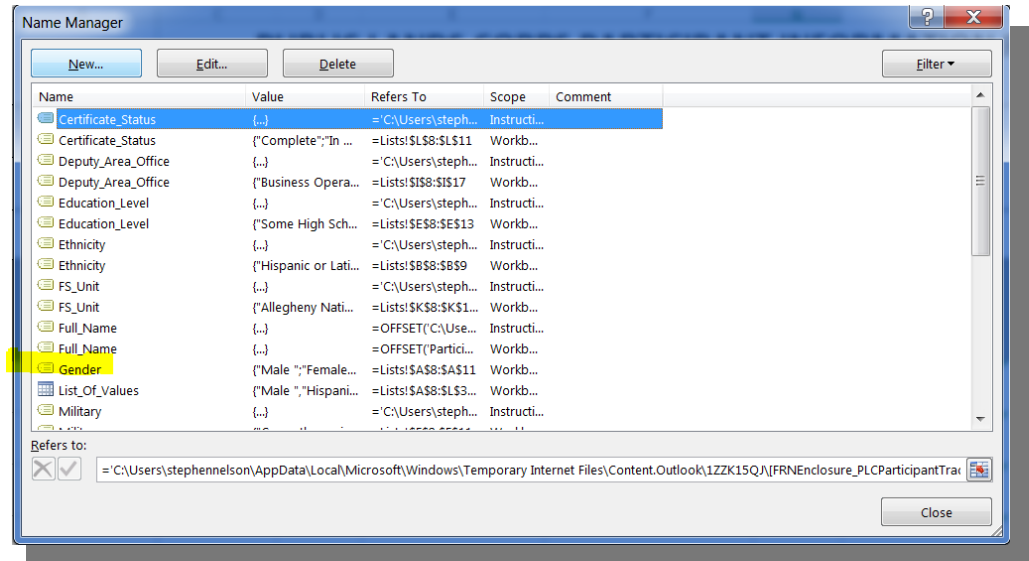


- f. Click on the X in the upper right corner to close the Data Validation dialog box. We now need to modify the range to include all of the cells we want to use for validation.
- g. Back on the Participants Information worksheet, select Formulas and then Name Manager as shown below.

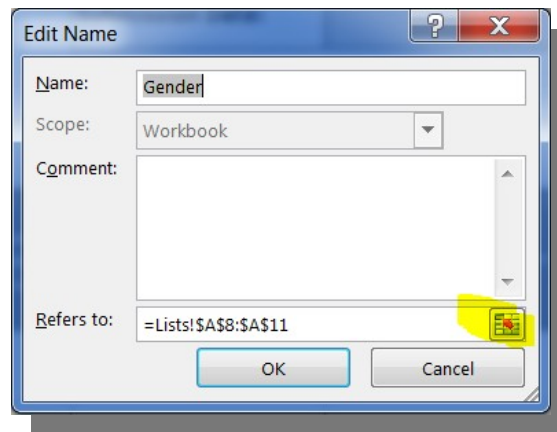


- h. This will display the Name Manager dialog box. Locate the named range you want to update from the list and double-click on it.

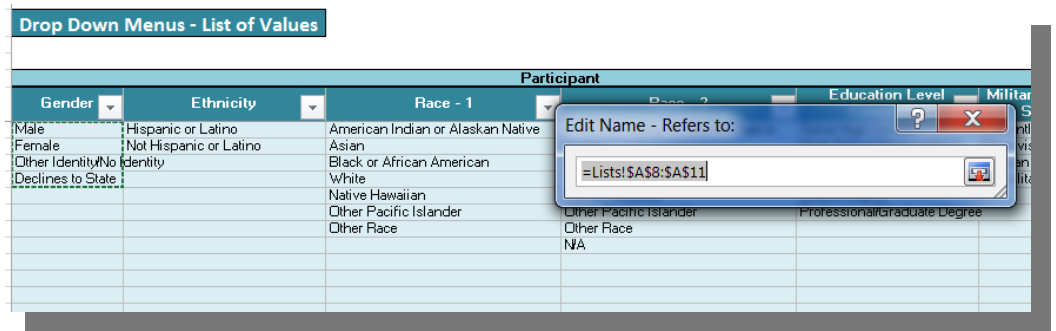
- i. This will display a list of all the named ranges in the workbook. Select the one you need to modify and double-click on it.



- j. You will then see the following dialog:



- k. Click on the small spreadsheet icon to modify the selection. This will display the current selection and you can then expand or reduce the selection to include the appropriate cells.



- l. Once the correct cells are selected, click close and OK and you will return to the worksheet where you can check that the dropdown now contains the values you specified.
- m. The last step is to hide the **Lists** worksheet. To do that you simply right click on the Lists tab at the bottom of the workbook and select **Hide**.