

2024 Okeanos Explorer Participation Assessment

This is a voluntary survey.

Public reporting burden for this collection of information is estimated to average 5 to 15 minutes per response, including the time for reviewing instructions, searching existing data sources, gathering and maintaining the data needed, and completing and reviewing the collection of information. Send comments regarding this burden estimate or any other suggestions for reducing this burden to:

Abby Letts LTJG/NOAA
NOAA Ocean Exploration
24 Colovos Rd
Durham, NH 03824

Notwithstanding any other provisions of the law, no person is required to respond to, nor shall any person be subjected to a penalty for failure to comply with, a collection of information subject to the requirements of the Paperwork Reduction Act, unless that collection of information displays a currently valid OMB Control Number.

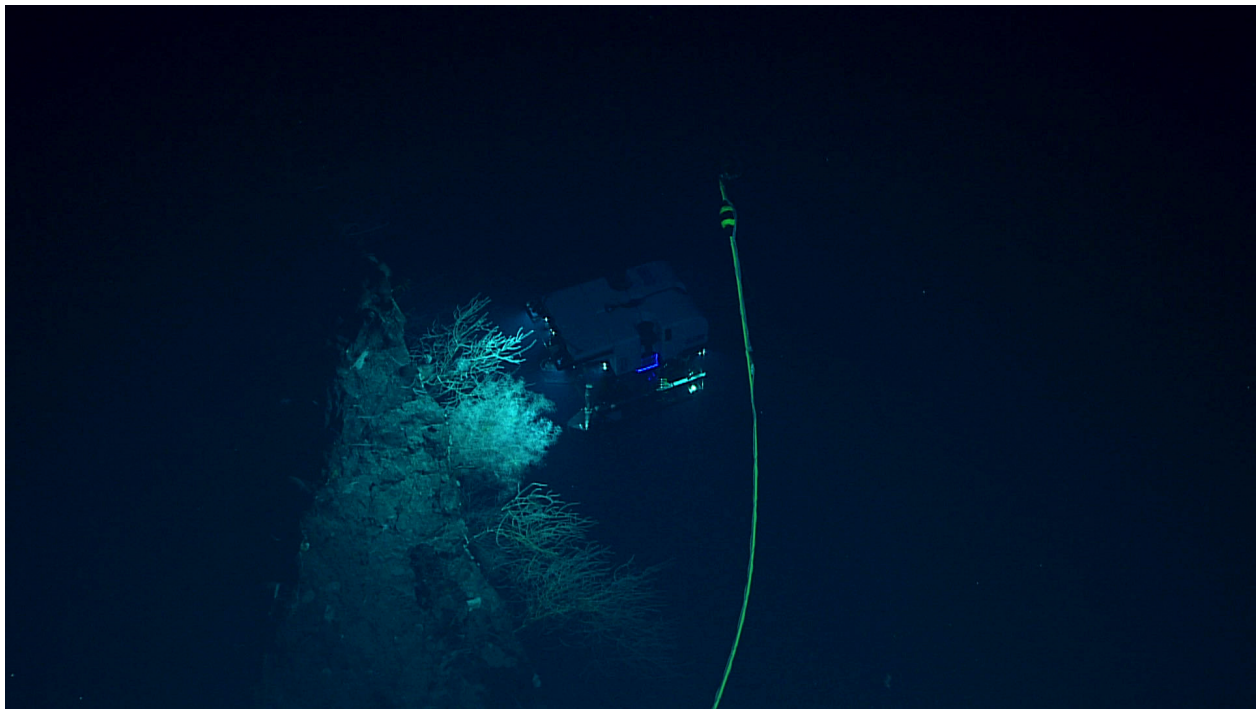
* Indicates required question

Assessment

As the NOAA Ocean Exploration's operations onboard NOAA Ship *Okeanos Explorer* are constantly evolving, the evaluation of your experience as part of the telepresence-enabled team (ship and shore) is essential to how we move forward and operate in the future. With each topic, please consider what you thought went well and what may have been challenging, and please feel free to provide suggestions for future operations. Individual assessments will be included in a comprehensive assessment of the expedition and help guide operations for the next field season.

Anonymity

This form does not collect email addresses and the responses are only accessible by Kasey Cantwell, the Operations Chief who oversees EX operations. All questions are optional, including providing your name and affiliation. If you have a specific experience that you'd like to discuss further, please reach out to Kasey Cantwell (kasey.cantwell@noaa.gov).



1. Name (optional if you want to remain anonymous)

2. Affiliation (optional)

3. Career stage (optional)

Mark only one oval.

Student

Early-career scientist (within 10 yrs from your terminal degree)

Over 10 yrs from your terminal degree

4. What expedition are you providing feedback about?

5. Location during the cruise: *

Mark only one oval.

On shore Skip to question 6

On ship Skip to question 17

Shoreside participants

6. How would you rate your experience during the pre-cruise planning and preparation period?

Mark only one oval.

Needs Significant Improvement

1

2

3

4

5

Excellent

7. Please provide any comments about your pre-cruise experience or suggestions for improvement.

Comments may relate to cruise planning, communications, science and operational meetings, training sessions, overall guidance, or any other information you would like to share.

We are particularly interested in any feedback on ways to improve our engagement of the science team.

8. How would you rate your experience during the cruise?

Mark only one oval.

Needs Significant Improvement

1

2

3

4

5

Excellent

9. Did you feel operations were collaborative in nature?

Mark only one oval.

Needs Significant Improvement

1

2

3

4

5

Excellent

10. Please provide any comments about your experience or suggestions to improve operations.

Comments may relate to training & guidance, use of new technologies, technical/operational support, daily operations/science planning, situational awareness, execution/efficiency, staffing, operational tempo & schedule, communication, perception of shore-based experience overall, or any other information you would like to share. How could we have improved your experience? We are also interested to learn how you felt the community based model worked. Did you feel there was a good balance of objectives and that the cruise was collaborative? Did you feel your opinions and feedback were considered in operational planning?

11. Additional useful products or datasets

What data do you wish we collected or made available on shore? Are any of our products particularly useful or not helpful? What data could we be collecting that would help characterize an area?

12. How would you rate data/information management and dissemination?

Mark only one oval.

Needs Significant Improvement

1

2

3

4

5

Excellent

13. Please provide any feedback on how we can improve information and data dissemination.

14. Please provide any comments about how we could improve our sampling operations.

We are interested in feedback on our sampling operations. Are there additional tools for sampling that would be useful to help initial characterization of an area? Are there ways that we can replace the need for a physical sample with a sensor or digital data? Please be aware there are physical and staffing limitations with our operations that we cannot change including few onboard scientists and limited physical space and facilities to process and store samples.

- 15. We are committed to a respectful and inclusive environment onboard the ship and in all places where NOAA Ocean Exploration engages. How would you rate your experience relative to a respectful and inclusive environment?

Mark only one oval.

Needs Significant Improvement

1

2

3

4

5

Excellent

- 16. Please provide any feedback about your experience and anyways we can support a respectful and inclusive environment.

If you have a specific experience that you'd like to discuss further, please reach out to our Operations Chief, Kasey Cantwell (Kasey.cantwell@noaa.gov).

Skip to question 30

At-sea Participants

17. Role during the cruise (optional)

Mark only one oval.

- Mapping team
- ROV team
- Video team
- Data Team
- Science Lead
- Sample Data Manager
- Ship's Crew
- Other: _____

18. How would you rate your experience during the pre-cruise planning and preparation period?

Mark only one oval.

Needs Significant Improvement

1

2

3

4

5

Excellent

19. Please provide any comments about your pre-cruise experience or suggestions for improvement.

Comments may relate to cruise planning, science and operational meetings, training sessions, overall communications, or any other information you would like to share.

We are particularly interested in any feedback on things that would improve how ready you felt to board the ship and step into your role for this expedition.

20. How would you rate your experience onboard during this cruise?

Mark only one oval.

Needs Significant Improvement

1

2

3

4

5

Excellent

21. Did you feel operations were collaborative in nature?

Mark only one oval.

Needs Significant Improvement

1

2

3

4

5

Excellent

22. Please provide any comments about your experience or suggestions to improve operations.

Comments may relate to training & guidance, use of new technologies, technical/operational support, daily operations/science planning, situational awareness, execution/efficiency, staffing, operational tempo & schedule, communication, perception of shore-based experience overall, or any other information you would like to share. How could we have improved your experience? We are also interested to learn how you felt the community based model worked. Did you feel there was a good balance of objectives and that the cruise was collaborative? Did you feel your opinions and feedback were considered in operational planning?

23. How would you rate communication / information dissemination while onboard?

Mark only one oval.

Needs Significant Improvement

1

2

3

4

5

Excellent

24. Please provide any feedback on how we can improve information dissemination and communication onboard.

25. Did you feel you had the tools you needed onboard to complete your job?

Mark only one oval.

No, I was missing things that made it impossible to do my job

1

2

3

4

5

Yes, I had everything I needed to complete my job

26. What else would have been helpful during your time onboard?

Is there anything you wish we had onboard (e.g. a piece of sampling equipment, camera in a specific place, type of workout equipment in the gym, additional online resource)? Is there anything that we're not doing that you've seen be successful on other platforms? Anything that was a major annoyance to you during your time onboard?

27. Please provide any comments about how we could improve our sampling operations.

We are interested in feedback on our sampling operations. Are there additional tools for sampling that would be useful to help initial characterization of an area? Are there ways that we can replace the need for a physical sample with a sensor or digital data? Please be aware there are physical and staffing limitations with our operations that we cannot change including few onboard scientists and limited physical space and facilities to process and store samples.

28. We are committed to a respectful and inclusive environment onboard the ship and in all places where NOAA Ocean Exploration engages. How would you rate your experience relative to a respectful and inclusive environment?

Mark only one oval.

Needs Significant Improvement

1

2

3

4

5

Excellent

29. Please provide any feedback about your experience and any ways we can support a respectful and inclusive environment onboard.

If you have a specific experience that you'd like to discuss further, please reach out to our Operations Chief, Kasey Cantwell (Kasey.cantwell@noaa.gov).

Overall Experience

30. How would you rate your overall experience during this expedition?

Mark only one oval.

Needs Significant Improvement

1

2

3

4

5

Excellent

31. Please provide feedback about your overall experience and suggestions/recommendations for future operations.

32. Is there anything else that was not covered in another section that you would like to share?

For additional feedback or information please email EX.ExpeditionCoordinator@noaa.gov to contact all Expedition Coordinators, or email kasey.cantwell@noaa.gov to keep your feedback anonymous.

This content is neither created nor endorsed by Google.

Google Forms