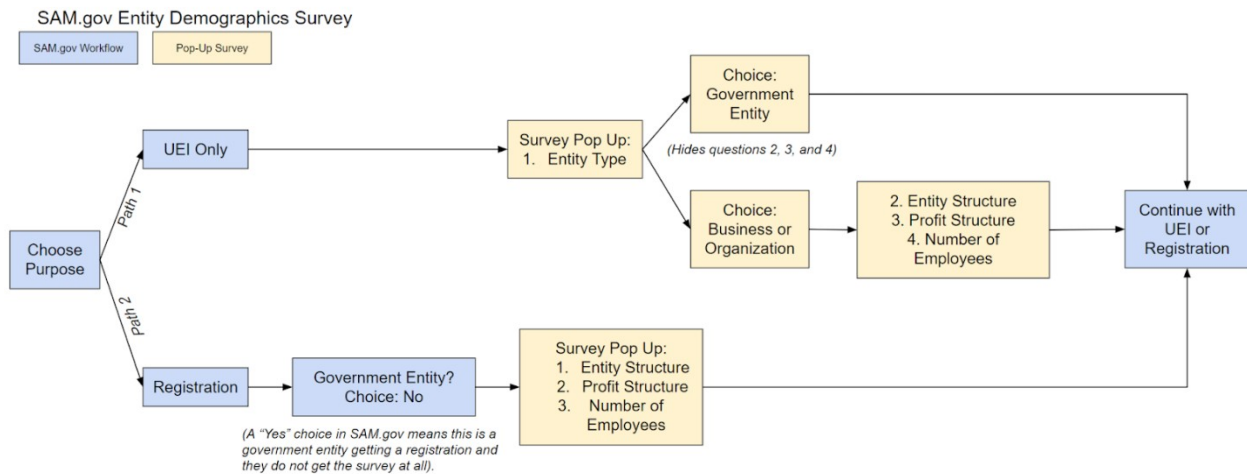


## Screenshots of the SAM.gov Entity Demographic Survey

The survey will display as a pop-up over the SAM.gov webpage when an entity (e.g., business, state or government, university) begins validation at SAM.gov. It is not an additional screen built into the validation workflow in SAM.gov and it does not route the participant to another browser tab or window.

The participants take one of two paths based on what they chose in SAM.gov prior to seeing the survey pop-up. Based on the path they chose, participants will only see the survey questions that pertain to them.



Screenshots on the following pages.

## First Path: View for Participants Who Choose UEI Only (Answer options collapsed)

Participants who choose to get only a UEI in SAM.gov will see this survey.

**Got a minute?**

Please take a minute to answer these optional questions about your entity. We use this data to improve your experience in SAM.gov. We will not share individual responses.

1. What is your **entity type**?

2. What is your **entity structure**?

3. What is your entity's **profit structure**?

4. How many **employees** does your entity have?

**Finish**

[PRA Statement](#)

Powered by Qualtrics

Answer options expanded for question one (entity type).

✕

### Got a minute?

Please take a minute to answer these optional questions about your entity. We use this data to improve your experience in SAM.gov. We will not share individual responses.

1. What is your **entity type**?

- Business or Organization
- U.S. State Government
- U.S. Local Government
- Tribal Government
- Foreign Government
- Business or Organization

3. What is your entity's **profit structure**?

4. How many **employees** does your entity have?

Finish

[PRA Statement](#)

Powered by Qualtrics

If the participant chooses any government entity type, questions two, three, and four are hidden and the survey is complete. Here's what the screens look like after each of the government entity types is selected.

**Got a minute?**

Please take a minute to answer these optional questions about your entity. We use this data to improve your experience in SAM.gov. We will not share individual responses.

1. What is your **entity type**?

U.S. State Government

**Finish**

[PRA Statement](#)

Powered by Qualtrics



### Got a minute?

Please take a minute to answer these optional questions about your entity. We use this data to improve your experience in SAM.gov. We will not share individual responses.

1. What is your **entity type**?

Finish

[PRA Statement](#)



### Got a minute?

Please take a minute to answer these optional questions about your entity. We use this data to improve your experience in SAM.gov. We will not share individual responses.

1. What is your **entity type**?

Finish

[PRA Statement](#)



### Got a minute?

Please take a minute to answer these optional questions about your entity. We use this data to improve your experience in SAM.gov. We will not share individual responses.

1. What is your **entity type**?

Finish

[PRA Statement](#)

If the participant chooses business or organization entity type, questions two, three, and four remain visible.

✕

### Got a minute?

Please take a minute to answer these optional questions about your entity. We use this data to improve your experience in SAM.gov. We will not share individual responses.

1. What is your **entity type**?

Business or Organization ▾

2. What is your **entity structure**?

▾

3. What is your entity's **profit structure**?

▾

4. How many **employees** does your entity have?

▬


Finish

[PRA Statement](#)

Powered by Qualtrics [↗](#)



Answer options expanded for question two (entity structure). Questions three and four remain.

✕  
**Got a minute?**  
Please take a minute to answer these optional questions about your entity. We use this data to improve your experience in SAM.gov. We will not share individual responses.  
  
1. What is your **entity type**?  
 ▼  
  
2. What is your **entity structure**?  
  
Sole Proprietorship  
Partnership or Limited Liability Partnership  
Corporate Entity (Not Tax Exempt)  
Corporate Entity (Tax Exempt)  
International Organization  
Other  
  
4. How many **employees** does your entity have?  
  
  
  
  
[PRA Statement](#)  
  
Powered by Qualtrics 

Answer options expanded for question three (profit structure). Question four remains.

✕

15

### Got a minute?

Please take a minute to answer these optional questions about your entity. We use this data to improve your experience in SAM.gov. We will not share individual responses.

1. What is your **entity type**?

2. What is your **entity structure**?


3. What is your entity's **profit structure**?

- For Profit Organization
- Non-Profit Organization
- Other Not For Profit Organization

entity have?

[Finish](#)

[PRA Statement](#)

Powered by Qualtrics 

Question four (number of employees) is a numerical text entry box. An example text entry of “45” displays below.

✕

### Got a minute?

Please take a minute to answer these optional questions about your entity. We use this data to improve your experience in SAM.gov. We will not share individual responses.

1. What is your **entity type**?


2. What is your **entity structure**?

3. What is your entity's **profit structure**?

4. How many **employees** does your entity have?

Finish

[PRA Statement](#)

Powered by Qualtrics 

## Second Path: View for Participants Choosing Registration (Answer options collapsed)

Participants who chose the Registration option in SAM.gov will see the following questions. The question for entity type in the First Path is removed for the Second Path to avoid duplicating a similar question later in the workflow for participants who choose Registration.

✕  

### Got a minute?

Please take a minute to answer these optional questions about your entity. We use this data to improve your experience in SAM.gov. We will not share individual responses.

1. What is your **entity structure**?

2. What is your entity's **profit structure**?


  

3. How many **employees** does your entity have?

[Finish](#)

[PRA Statement](#)

Powered by Qualtrics 

Answer options expanded for question one (entity structure).

**Got a minute?**

Please take a minute to answer these optional questions about your entity. We use this data to improve your experience in SAM.gov. We will not share individual responses.

1. What is your **entity structure**?

- Sole Proprietorship
- Partnership or Limited Liability Partnership
- Corporate Entity (Not Tax Exempt)
- Corporate Entity (Tax Exempt)
- International Organization
- Other

3. How many **employees** does your entity have?

**Finish**

[PRA Statement](#)

Powered by Qualtrics

Answer options expanded for question two (profit structure).

**Got a minute?**

Please take a minute to answer these optional questions about your entity. We use this data to improve your experience in SAM.gov. We will not share individual responses.

1. What is your **entity structure**?

2. What is your entity's **profit structure**?

- For Profit Organization
- Non-Profit Organization
- Other Not For Profit Organization

entity have?

**Finish**

[PRA Statement](#)

Powered by Qualtrics

Question three (number of employees) is a numerical text entry box. An example text entry of “45” displays below.

✕

### Got a minute?

Please take a minute to answer these optional questions about your entity. We use this data to improve your experience in SAM.gov. We will not share individual responses.

1. What is your **entity structure**?

2. What is your entity's **profit structure**?

3. How many **employees** does your entity have?

[Finish](#)

[PRA Statement](#)

Powered by Qualtrics 