



About



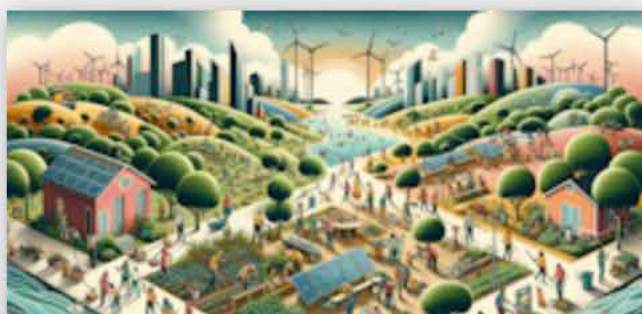
Applications



## 📘 Important grants information ▾

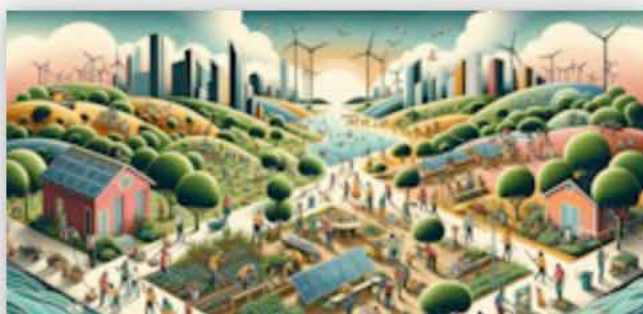
OMB Control Number = 2035.NEW, Expiration Date = mm/dd/yyyy

This collection of information is approved by OMB under the Paperwork Reduction Act, 44 U.S.C. 3501 et seq. OMB Control Number: 2035-NEW. Responses to this collection of information are voluntary. An agency may not conduct or sponsor, and a person is not required to respond to, a collection of information unless it displays a currently valid OMB control number. The public reporting and recordkeeping burden for this collection of information is estimated to be 5-10 hours. Send comments on the Agency's need for this information, the accuracy of the provided burden estimates and any suggested methods for minimizing respondent burden to Director, Information Engagement Division; U.S. Environmental Protection Agency (2821T); 1200 Pennsylvania Ave., NW; Washington, D.C. 20460. Include the OMB control number in any correspondence. Do not send the completed form to this address.



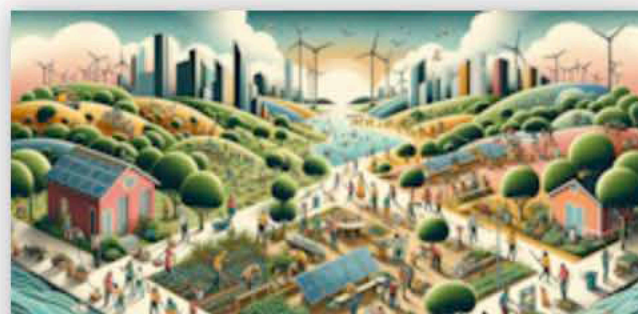
Phase 1

Start Here



Phase 2

Start Here



Phase 3

Start Here

## My applications

Active season (2024) ▾

Current ▾



Search list

Advanced



Hello, [redacted]

You have no applications yet. What are you waiting for?



## Potential Projects?

## Project Summary?

## Priorities and Results Goals

- ☐ Workforce development and student success to support the green economy
- ☐ Capacity-building for grassroots CBOs and other organizations
- ☐ Public and environmental health, with a particular emphasis on air quality and its short- and long-term impacts
- ☐ Intersectional projects that advance transit solutions, affordable and sustainable housing, food security, racial justice
- ☐ Recovery, coastal resilience and managed retreat
- ☐ Clean energy transitions
- ☐ Biodiversity and conservation
- ☐ Sustainable transportation
- ☐ Sustainable agriculture, food systems and food security
- ☐ Community access to and revitalization of green spaces, waterways, and underutilized areas

What is the target area and general characterization of the community your project will impact? Please submit a map of the project area using the "EPA JPA Disadvantaged

Organization or Government Entity Information

Project Information

Project Narrative

Budget Narrative

Impact

Supplemental Materials (Optional)

Community Planning

Evaluation Plan

Declaration

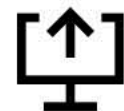
Please share a description of the community planning process you have already undertaken, the outcomes of the process, and describe how these outcomes will allow you to implement an impactful project on the ground. Please cite previous planning documents, projects, research and dissemination and other evidence. (1 page maximum)

☒ Write here

☒ Attach a document

Please answer here:

Attach here:



Drag your file here  
or

Select file



Save + next

Save + close

Preview

Submit application



About



Applications

## My applications → Phase 3 → Start application

All questions must be answered, unless marked optional.

Organization or Government Entity Information

Project Information

Project Narrative

Budget Narrative

Impact

Supplemental Materials (Optional)

Community Planning

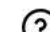
Evaluation Plan

Declaration

Describe communities within the target area. 

What are the area's primary environmental justice challenges?  
What kinds of environmental and health burdens does the community face?

Please describe the short and long term impact that your project will have.

How will you know your project has been successful? What do you want it to accomplish? 

Please use numbers, percentages and quantities to provide an approximate quantification of the expected short-term and long-term impacts, where possible.



Save + next

Save + close

Preview

Submit application





# My applications → Noncompetitive Award Submissions or Nominations → Start application

All questions must be answered, unless marked optional.

## Organization Information

Category

Noncompetitive Awards



Download blank application PDF for reference

Full Name

Be sure to clearly state the organization whose project you are nominating or submitting

Tell us about that organization: who does it work with? How many people does it serve? What is its mission? How does it typically generate funds to accomplish its key goals?



[About](#)[Applications](#)

## Thanks for submitting your application

We'll keep you informed of the progress of your application via email notifications and broadcasts so please make sure you're subscribed to receive these in your user profile.

[Return to my applications](#)

