

Attachment H

Department of Commerce United States Census Bureau OMB Information Collection Request Annual Integrated Economic Survey OMB Control Number 0607-XXXX

Respondent-Centered Formative Research Overview

Purpose:

This document provides an overview of the respondent-centered formative research conducted to support the development of the AIES. First, there is a short overview of the AIES. Then, each research project is presented, including the response size, the method of inquiry, research questions, and major findings. For more information about any of these projects, please contact Blynda Metcalf at blynda.k.metcalf@census.gov.

Contents:

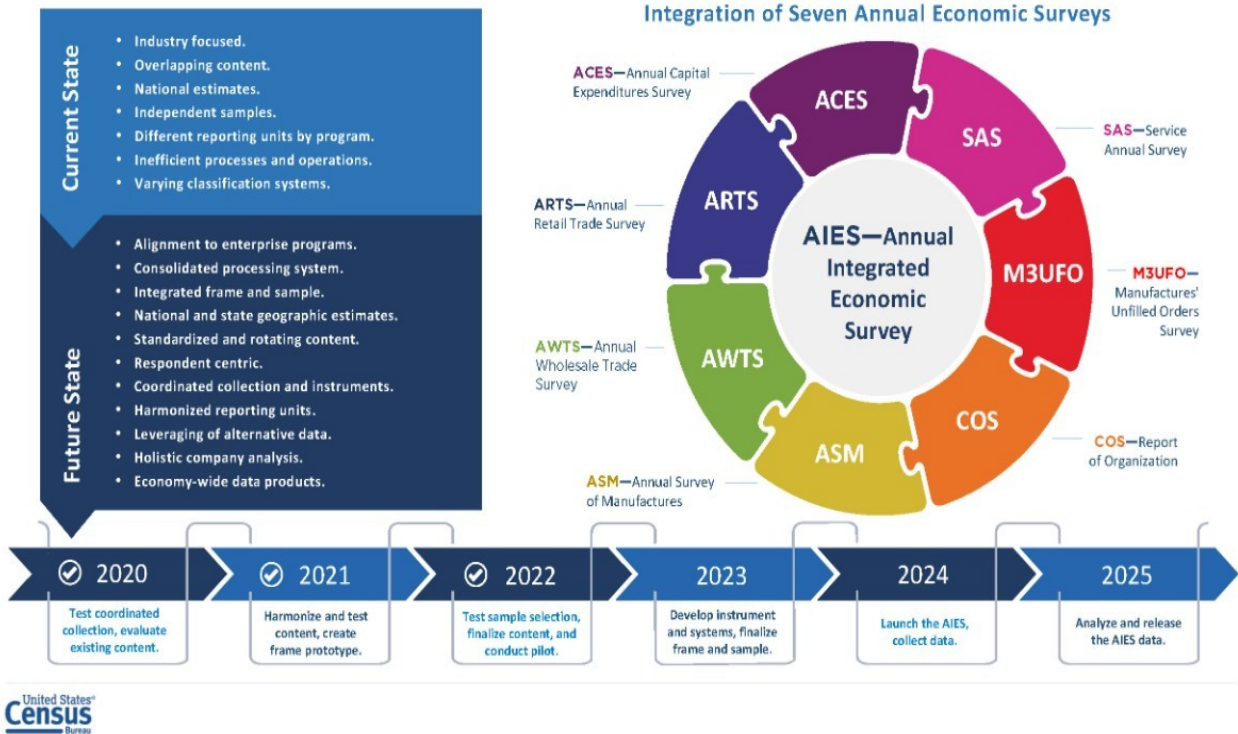
- Overview of the AIES
- Record Keeping Study
- Data Accessibility Study
- Coordinated Collection Study
- Survey Structure Interviewing
- AIES Pilot Phase I
- Planned: AIES Pilot Phase II
- Planned: Usability Interviewing
- Planned: Communications Testing Interviewing

Overview of the AIES

In 2015, at the request of the Census Bureau, the National Academies of Sciences convened the Panel on Reengineering the Census Bureau's Annual Economic Surveys. This panel consisted of survey specialists, economists, and economic survey data users, and was charged to review the design, operations, and products of the Bureau's suite of annual economic surveys of manufacturers, wholesale trade, retail trade, services, and other business activities.

The panel recommended short-term and longer-term steps to improve the relevance and accuracy of the data, reduce respondent burden, incorporate non-survey sources of data when beneficial, and streamline and standardize Census Bureau methods and processes across surveys. One specific recommendation of the panel is the harmonization of existing economic surveys to create one integrated annual economy-wide data collection effort. For more information, see National Academies of Sciences, Engineering, and Medicine (2018).

ANNUAL INTEGRATED ECONOMIC SURVEY (AIES)



From these recommendations, the Annual Integrated Economic Survey (AIES) was conceived. The AIES represents a bringing-together of seven annual economic surveys. These surveys use different collection units, including company-level collection, establishment-level collection, and industry-level collection. They also use different collection strategies, timelines, and systems. This figure represents the integration goals, in-scope annual surveys, and timeline for full implementation and publication.

Record Keeping Study

In the fall of 2019, Census Bureau researchers conducted 28 in depth interviews focused on how companies keep their accounts to explore the link between records and company organizational and management practices. First, interviewers asked respondents to describe in their own words what their business does or makes, and then to indicate the North American Industry Classification System (NAICS) that was most appropriate for their business. Then, researchers asked about response process for a few key variables and for Census Bureau surveys overall.

Record Keeping Study	
Timeline:	Fall 2019
Method:	In-depth semi-structured interviews of medium size companies focused on how they keep accounts and financial records
Number of Interviews:	28
Research Questions:	<ul style="list-style-type: none"> • How do companies define data items based upon their charts of accounts and financial reporting requirements? • What data are available at what level? • When are the data available?
Major Findings:	<ul style="list-style-type: none"> • Mismatch in unit definitions • NAICS classification is challenging • Consolidated figures are an anchor
Recommendations:	<ul style="list-style-type: none"> • Take a holistic approach to surveying companies • Avoid classifications and terminology that do not work for businesses

In particular, this research was a first investigation into the ways that companies keep their accounting records so that the AIES could be designed to complement systems already in place. Researchers found that companies keep their data by a number of different units, that NAICS classifications can be unnatural or challenging for some businesses, and that for the most part, companies use their consolidated company totals as an anchor to match against any breakdowns a survey may be requesting.

For this interviewing, the interviewer protocol was built around a generic company chart of accounts. First, interviewers showed respondents a mock chart of accounts. They asked respondents to compare and contrast how their business is structured and maintains its records. They probed respondents on their chart of accounts relative to their company's structure, industries in which the company operates, and locations, as well as the types of software used to maintain their chart of accounts.

Once researchers had a better understanding of the company chart of accounts and record keeping practices, they could then ask follow-up questions about specifics within their chart of accounts. Here, they were really interested in mismatches between our understanding of how records are kept and retrieved and the

CHART OF ACCOUNTS As of 12/31/20XX	
ASSETS	EXPENSES
100 Checking - Operating Account	500 Gross Payroll
101 Checkinf - Other	501 Rent
102 Retainer Checking Account	502 Interest
103 Trust Checking Account	505 Taxes - FICA Expense
105 Reserve Account	506 Taxes - DC DOES
115 Petty Cash	507 Taxes - FUTA Unemployment
116 Postage	508 Taxes - DC Personal Property
122 Assets	509 Taxes - DC Professional
130 Cost Advanced	510 Taxes - Other
	515 Repairs
TOTAL ASSETS	516 Employee Benefits
	517 Employee ABRA
LIABILITIES	518 Office Move
200 Accounts Payable	519 Professional Services
202 Retainers on Deposits: Contra - a/c	520 Library & Subscriptions
203 Trust A/C	521 Equipment Rental
220 US & FICA Taxes Withheld	525 Telephone Expense
221 MD/DC Taxes Withheld	526 Supplies
	527 CLE
	528 Food
	530 Entertainment
INCOME	531 Xerox
301 Fees	532 Dues

510 Other Income					535 Liability & Gsts. Insurance
					536 Travel
TOTAL INCOME					537 Postage Expense
					538 LEXIS Expense
EQUITY					540 Miscellaneous
Partners Equity					541 Costs Advanced - Uncollectible
					542 Depreciation Expense
420 Capital					549 Charitable Contributions
					550 Other Non-Deductible Expenses
					TOTAL EXPENSES:
					TOTAL LIABILITIES & STOCKHOLDERS EQUITY

questions respondents encountered on C around five areas as applicable to the cor

- Business segments by industry (kind of business)
- Sales/receipts/revenues
- Inventory
- Expenses, including payroll and employment
- Capital expenditures.

From this research, it was recommended that the AIES take a holistic approach to surveying companies, including all parts of the business where possible. Another recommendation was that communications with respondents around units and industry classification be as clear as possible.

Data Accessibility Study

Following the Record Keeping Study, Census Bureau researchers then engaged in an additional 30 in-depth interviews about the accessibility of their data at various levels of the business. These interviews first established definitions and equivalencies of response units. Then, respondents were asked about 'general' and 'specific' industry classifications (akin to the four- and six-digit NAICS classifications). Finally, respondents used a four-point color coded scale ranging from green (very accessible) to red (not at all accessible) to categorize data for specific topics (e.g., revenue, expenses, and payroll) at specific levels (e.g., company-wide, by state, by establishment, or at the general and specific industry levels).

Data Accessibility Study	
Timeline:	Winter 2021
Method:	In-depth semi-structured interviews of medium size companies focused on the accessibility of their data at various levels
Number of Interviews:	30
Research Questions:	<ul style="list-style-type: none">• How do businesses define themselves relative to the Census Bureau definitions?• How accessible are key data points at varying business units?• How resource-intensive is gathering data at these varying business units?
Major Findings:	<ul style="list-style-type: none">• NAICS can be challenging• Company level data more accessible• State level required summation
Recommendations:	<ul style="list-style-type: none">• Use company-level data as a check on data quality• Ask for establishment-level response in place of state-level response

This set of interviewing further detailed what data are available at what levels. Echoing the Record Keeping Study, this research found that company-level data are the most accessible regardless of size and sector of the business, and that more granular levels of data can be increasingly challenging. At the same time, asked about the availability of data at the state level, many respondents noted that to give state-level responses, they would need to pull the data at the establishment level and sum up to the state level.

This study extended a framework put forth by Snijkers and Arentsen (2015), who developed a four-point color coded scale as a reference for respondents when assessing the accessibility of their data at various increments, in terms of both time and organization. Census Bureau researchers operationalized the Accessibility Scale using card sort methodology by asking respondents to categorize the accessibility of data at each of the different levels of measurement by assigning each level to a color representing accessibility. The left side shows the instructions for respondents, and the right shows the interactive card sort (specifically for the question on sales, revenue, and other operating receipts). Respondents click on each unit and drag it to one of the four colors to indicate the accessibility of data at that level for revenue.

Instructions:
Sort into the four categories below how accessible or inaccessible the answer to this question is at each of these business units for your business. You will drag each of the six business units into one of the four categories.

Question: What were the TOTAL sales, revenue, and other operating receipts for this [business unit] in 2019?

Business Unit
Your company
Establishment
Line of business
Specific industry
General industry
State

Green - Easily Accessible

Yellow - Accessible with minor effort

Orange - Accessible with major effort

Red: Inaccessible

- **Green:** Easily accessible
- **Yellow:** Accessible with minor effort
- **Orange:** Accessible with major effort
- **Red:** Inaccessible

One of the benefits to conducting the card sort is that the resultant data can be displayed in compelling ways. Displayed here are the results of just the revenue question. Almost all respondents could provide data by company, the largest unit. Notice, though, as respondents move through the various units, there is less categorized as 'green - accessible with no effort.' At the establishment, line of business, and state levels, about half of respondents could provide revenue data with little to no effort (yellow or green), however, some respondents say that it would be a 'major' effort to pull these data, especially at the state level. Looking at NAICS (general and specific industry), there is a decline in the number of respondents who said that revenue data were easily accessible or accessible with minor effort.

Accessibility Study: Card Sort Results

Here are the reported accessibility levels for the sales, revenue, and operating receipts question by six business units:

Each row represents a completed interview. Each column represents a business unit. Each color represents the accessibility of sales, revenue, and operating receipts data for that business unit for each interview.

Key:

	Accessible with no effort
	Accessible with minor effort
	Accessible with major effort
	Not accessible
	Interview data uncodeable

What were the TOTAL sales, revenue, and other operating receipts for this [business unit] in 2019?

Interview Number	Company	Establishment	Line of Business	State	Specific Industry	General Industry
1	Green	Red	Yellow	Yellow		
2	Green	Yellow	Yellow	Yellow		
3	Green	Yellow	Yellow	Yellow		
4	Green	Yellow	Yellow	Yellow	Red	
5	Green	Yellow	Yellow	Yellow		Yellow
6	Green	Yellow	Yellow	Yellow		Yellow
7	Green	Yellow	Yellow	Yellow		Yellow
8	Green	Yellow	Yellow	Yellow		Yellow
9	Green	Yellow	Yellow	Yellow		Yellow
10	Green	Yellow	Yellow	Yellow	Yellow	Green
11	Green	Yellow	Yellow	Yellow	Yellow	Green
12	Green	Yellow	Yellow	Yellow	Yellow	Green
13	Green	Yellow	Yellow	Yellow	Yellow	Green
14	Green	Yellow	Yellow	Yellow	Yellow	Green
15	Green	Yellow	Yellow	Yellow	Red	Red
16	Green	Yellow	Yellow	Yellow	Yellow	Yellow
17	Green	Yellow	Yellow	Yellow	Yellow	Yellow
18	Green	Yellow	Yellow	Yellow	Yellow	Yellow
19	Green	Yellow	Yellow	Yellow	Yellow	Yellow
20	Green	Yellow	Yellow	Yellow	Yellow	Yellow
21	Green	Yellow	Yellow	Yellow	Yellow	Yellow
22	Green	Yellow	Yellow	Yellow	Yellow	Yellow
23	Green	Yellow	Yellow	Yellow	Yellow	Yellow
24	Green	Yellow	Yellow	Yellow	Yellow	Yellow
25	Green	Yellow	Yellow	Yellow	Yellow	Yellow
26	Green	Yellow	Yellow	Yellow	Yellow	Yellow
27	Green	Yellow	Yellow	Yellow	Yellow	Yellow
28	Green	Yellow	Yellow	Yellow	Yellow	Yellow
29	Green	Yellow	Yellow	Yellow	Yellow	Yellow
30	Green	Yellow	Yellow	Yellow	Yellow	Yellow

Coordinated Collection Respondent and Non-Respondent Debriefing Interviews

In preparation for the integrated survey, staff at the Census Bureau began a program of consolidating company contacts across the current annual surveys to identify one primary contact for the AIES. To better understand how contact consolidation might impact response processes, researchers conducted two rounds of debriefing interviews. The first was 35 interviews with responding companies during which Census Bureau researchers asked questions about communication materials and challenges. The second round was 19 interviews with non-responding companies to understand where response may have broken down.

Coordinated Collection Respondent and Non-Respondent Debriefing Interviews	
Timeline:	Summer 2020 and Summer 2021
Method:	Phone debriefing interviews
Number of Interviews:	35 respondents, 19 non-respondents
Research Questions:	<ul style="list-style-type: none"> • How do respondents comprehend specific contact materials? • How do respondents use the respondent portal for accessing and delegating surveys? • Does consolidated collection impact companies that have a single point of contact versus multiple contacts? • Are there difficulties in completing the questionnaires?
Major Findings:	<ul style="list-style-type: none"> • Mixed results with communications <ul style="list-style-type: none"> • Letters and emails: COVID-impacted • Respondent portal: positive response • In-field responsiveness: mixed response • Barriers to response can be external (company-related) or internal (survey-related)
Recommendations:	<ul style="list-style-type: none"> • Consider time and place, historical events • Streamline contacts for surveys • Ensure Census follows up on outstanding issues

From the respondent debriefing interviews, researchers noted that many respondents did not receive or do not remember receiving many of the communications that the Census Bureau but some of this may be related to the COVID-19 global pandemic. Respondents generally evaluated Census Bureau communications positively (especially the online Respondent Portal), but that respondents' experiences with reaching out for support from the Census Bureau can be mixed (specifically when attempting to update company contact information). Non-respondent debriefings identified barriers to response, including company-related issues like staffing shortages and data being decentralized, surveys that do not reflect current company structure, and communication shortfalls from the Census Bureau.

Survey Structure Interviewing

In the winter 2022, Census Bureau researchers conducted 39 interviews with companies focused on preliminary 'mock ups' of survey screens designed to give respondents an overview of the survey at large. Respondents were asked about their record keeping practices and preferences for reporting (e.g., using a spreadsheet or the traditional page-by-page response). Finally, respondents were asked to reflect on the concept of the AIES as a whole, their thoughts about the overall design, and their thoughts on its effect on their burden.

Survey Structure Interviewing	
Timeline:	Winter 2022
Method:	Interviews with companies in various industries using mockups of modules and survey
Number of Interviews:	39
Research Questions:	<ul style="list-style-type: none">• How do respondents react to mock-ups of surveys and modules?• How does record keeping impact reporting preferences?• What did they think about the AIES as a whole, especially regarding burden?
Major Findings:	<ul style="list-style-type: none">• AIES introduce complexity for reporting by unit and topic• Respondents plan their response process
Recommendations:	<ul style="list-style-type: none">• Specify terminology for companies• Provide both spreadsheet and downloadable survey• Explain industry classification• Allow flexibility for answers about industry

Researchers noted that the AIES introduces complexities for response both at the units of collection (company, establishment, and industry) and by the various topics mixed into one survey. Respondents talked about planning their response process. Respondents indicated wanting to use a downloadable spreadsheet option to gather their data first, then enter it into the survey. Once the data was entered into the survey, they wanted to submit data across all survey sections at one time, instead of section by section. Respondents also stressed their reliance on survey previews (as PDFs or otherwise) to make a plan for data collection. Recommendations from this research include careful communications around collection unit and classification and providing a respond-by-spreadsheet option.

Here is an example of the type of screen mock-up that was presented to respondents during the Survey Structure Interviewing. This screen introduces respondents to the option of responding to the survey by a spreadsheet that is downloaded, completed, and then uploaded to submit to the Census Bureau, or to respond by page-by-page typical survey layout. Note that this screen also contains a PDF preview of the full survey, another feature about which respondents had a positive reaction.

Survey Structure Interviewing: Screen Mock-up

Choose Reporting Method

Please review your options below and choose a reporting method for this module.
You may change to a different option later.

total locations have been identified for your company.

View AIES questions as PDF

Consolidated Spreadsheet Reporting
Recommended if you have more than 5 locations to report for
Download a spreadsheet template containing all selected locations for your company.
This option will allow you to answer the AIES questions on a spreadsheet template that you will then upload

Star

Individual Reporting
Recommended if you have 5 or less locations to report for
This option will allow you to answer the AIES questions on a page-by-page basis

Star

AIES Pilot Phase I

Census Bureau researchers determined that the next research step was to induce independent response from the field for the integrated survey. In March 2022, the AIES Pilot Phase I launched to 78 companies from across the country. In total, 62 companies (79 percent) provided at least some response data to the survey. In addition to the online survey, seven companies participated in debriefing interviews asking about response processes for the integrated instrument, 15 companies completed a Response Analysis Survey (a short survey with questions centered on real and perceived response burden).

AIES Pilot Phase I	
Timeline:	Spring 2022
Method:	Online survey instrument, respondent debriefing interviews, Response Analysis Survey (RAS), and contact from the field
Number of Interviews:	78
Research Questions:	<ul style="list-style-type: none">• How are respondents completing the survey?• Can respondents provide answers to the questions on the survey?• Does the order and structure of the survey make sense?• Is the survey overly burdensome?• Is the survey using appropriate units of analysis?• What do the resultant data look like?
Major Findings:	<ul style="list-style-type: none">• Mixed collection approach preferred• Duplicate content is adding burden• Respondents use communications materials
Recommendations:	<ul style="list-style-type: none">• Use a holistic spreadsheet approach• Further investigation into burden• Develop respondent communications

During the Pilot field period, researchers catalogued phone and email contact from respondents requesting additional information, asking questions, or otherwise reaching out for support for additional data on instrument performance. The Phase I Pilot was focused on understanding response process for the integrated survey. The survey was broken into four sections that corresponded to units of collection - company, establishment, and industry, plus one section for newly opened or acquired establishments. In general, respondents used both response spreadsheets and screen-by-screen response. Some questions were asked at more than one collection unit, which added to response burden. And, respondents mentioned using communications materials to respond, like PDF survey previews.

On the question of response process, respondents noted in debriefing interviews that they are using a response process similar to the current annual surveys, mainly, relying on PDF previews and matching questions to their company records. Company level data were the most reported of any level and were reported more completely than any other level in the survey. Respondents also showed a preference to respond by page-by-page typical survey layout for company-level requests, and by spreadsheet for establishment and industry-level data.

Investigating burden, the results are mixed. A total of 15 companies that responded in full or in part to the AIES Pilot Phase I instrument also responded in full or in part to the Response Analysis Survey. Asked to estimate actual burden, respondents reported on average that the survey took about 16 hours to complete. The range is wide, from a low of 3 hours to a high of around 40 hours. At the same time, respondent reported perceived response burden is mixed, too, with some saying the pilot survey was difficult, and others saying it was easy or not difficult, and some reporting that the pilot took more time than usual annual reporting, and others saying it took less time or about the same amount of time. Researchers recommend additional response-burden focused research.

In Progress: AIES Pilot Phase II

Beginning in the spring of 2023, a Phase II of the AIES Pilot will launch. About 900 companies will be given the Phase II pilot response spreadsheet in place of their current in-scope annual surveys, including 62 companies that provided at least some response data to the Phase I instrument. The Phase II Pilot will duplicate the additional research methodologies of the Response Analysis Survey, respondent debriefing interviews, and cataloguing contact from the field.

Planned: AIES Pilot Phase II	
Timeline:	Spring 2023
Method:	Online survey instrument, respondent debriefing interviews, Response Analysis Survey (RAS), and contact from the field
Number of Interviews:	≈ 800
Research Questions:	<ul style="list-style-type: none">• How are respondents completing the survey?• Can respondents provide answers to the questions on the survey?• Does the order and structure of the survey make sense?• Is the survey overly burdensome?• Is the survey using appropriate units of analysis?• What do the resultant data look like?
Goals:	<ul style="list-style-type: none">• Understand how respondents are interacting with the holistic spreadsheet design• Better measures of actual and perceived response burden• Refine respondent communications

The major goals of the Phase II Pilot are to understand how respondents are interacting with the updated holistic listing spreadsheet design, and to continue to refine and tailor support documentation like walkthroughs based on these interactions. There will also be additional investigations into actual and perceived burden.

Planned: Usability Interviewing

Beginning in the spring of 2023, and spanning through the fall, researchers will conduct a series of usability interviews testing the AIES instrument. During this interviewing, respondents will be asked to complete a series of response-related tasks, and interviewers will note the ways that respondents interact with the survey, especially in cases where task completion is unsuccessful. Goals of this testing include identifying those places on the survey where response is intuitive and non-intuitive, and to further develop and refine response support materials, particularly focused on communicating those non-intuitive features to respondents.

Planned: Usability Interviewing	
Timeline:	Spring through Fall 2023
Method:	Task-focused interviewing
Number of Interviews:	≈ 75
Research Questions:	<ul style="list-style-type: none">• What features do respondents use to support response?• What features are not intuitive to respondents?• What additional information do respondents need to report their data?
Goals:	<ul style="list-style-type: none">• Identify intuitive and non-intuitive response features in the instrument• Further develop and refine response support materials

Planned: Communications Testing Interviews

Census Bureau researchers are also planning to conduct communications-focused interviews with up to 20 businesses across various industries and characteristics. These interviews will ask respondents about recall and comprehension of communications used in the AIES Pilot Phase II, as well as identify activating messaging that may be more likely to encourage response.

Planned: Communications Testing Interviews	
Timeline:	Spring through Fall 2023
Method:	Communications-focused Interviewing
Number of Interviews:	≈ 20
Research Questions:	<ul style="list-style-type: none">• Do respondents recall receiving the various communications?• Did respondents comprehend the initial request?• What component of the messaging, if any, motivated respondents to start the survey?
Goals:	<ul style="list-style-type: none">• Identify messaging that resonates with respondents• Identify respondent communication preferences

Works Cited:

National Academies of Sciences, Engineering, and Medicine. 2018. *Reengineering the Census Bureau's Annual Economic Surveys*. Washington, DC: The National Academies Press. doi: <https://doi.org/10.17226/25098>.

Snijkers, Ger and Kenneth Arentsen. 2015. "Collecting Financial Data from Large Non- Financial Enterprises: A Feasibility Study." Presentation at the 4th International Workshop on Business Data Collection Methodology, Bureau of Labor Statistics, Washington, DC.