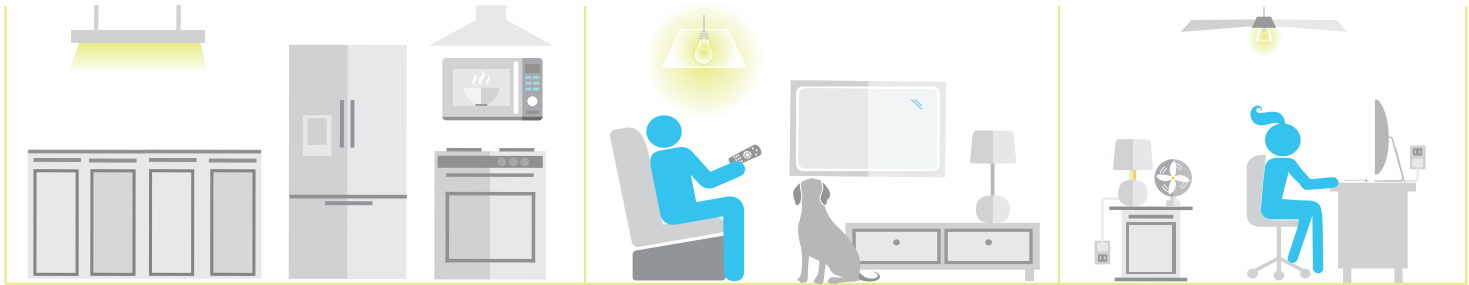


# **1. Prenotification 8.5X5.5" Postcard (1/3 sample)**



Residential Energy Consumption Survey  
U.S. Department of Energy  
C/O RTI International  
Cox Building (Data Capture)  
0215930.006.002.004  
PO Box 12194  
Research Triangle Park, NC 27709-2194

[CITY] RESIDENT  
[RECIPIENT ADDRESS]  
[CITY, ST ZIP]



Dear [CityMixed] Resident:

I am writing to ask your help in a nationwide study being conducted by the U.S. Energy Information Administration, the statistical and analytical agency within the U.S. Department of Energy. Through this study, we will learn how energy is used in apartments, houses, and other types of homes across the country—information that is critical to understanding future energy needs.

Next week, you will receive an invitation to complete the Residential Energy Consumption Survey (RECS). The invitation will include **\$5 in cash** to thank you in advance for your participation. When the invitation arrives, please follow the instructions and complete the questionnaire promptly to ensure that households like yours are represented in this study.

If you would like more information on the study, please visit [www.eia.gov/recs](http://www.eia.gov/recs).

Many thanks!

Charles Ian Mead, Director  
Office of Energy Demand and Integrated Statistics  
U.S. Energy Information Administration

Estimado(a) residente de [CityMixed]:

Le escribo para pedirle su ayuda en un estudio a nivel nacional que está realizando la Administración de Información Energética de Estados Unidos, que es la agencia estadística y analítica del Departamento de Energía de Estados Unidos. Mediante este estudio, aprenderemos cómo se usa la energía en apartamentos, casas y otros tipos de viviendas de todo el país, lo que es información fundamental para entender las necesidades de energía futuras.

La próxima semana recibirá una invitación para completar la Encuesta sobre Consumo de Energía en Hogares (RECS, por sus siglas en inglés). La invitación incluirá **\$5 dólares en efectivo** para agradecerle en forma anticipada por su participación. Cuando reciba la invitación, le pedimos que siga las instrucciones y complete el cuestionario con prontitud para asegurar que hogares como el suyo estén representados en el estudio.

Si desea recibir más información sobre el estudio, visite [www.eia.gov/recs](http://www.eia.gov/recs) (inglés).

¡Muchas gracias!

Charles Ian Mead, Director  
Oficina de Demanda Energética y Estadísticas Integradas  
Administración de Información Energética de Estados Unidos



Independent Statistics and Analysis  
**U.S. Energy Information  
Administration**

## **2. Survey Mailing 1 Cover Letter**



Department of Energy
Washington, DC 20585

[XXX:XXXXXXXXX/BARCODE]
[NPC ID XXXXXXXXXXXXXXXXXXXXXXXXXX ]
[CITY] RESIDENT
[STREET ADDRESS]
[CITY, STATE ZIP]
[Barcode]



Dear [CityMixed] Resident:

I am writing to ask for your help in a nationwide study being conducted by the U.S. Energy Information Administration, the statistical and analytical agency within the U.S. Department of Energy. Through this study, we will learn how energy is used in apartments, houses, and other types of homes—information that is not available anywhere else. This information is critical to understanding future energy needs and improving efficiency.

Please help us with this study by completing the Residential Energy Consumption Survey (RECS). Your household is one of only a small number that have been randomly selected to represent homes across the country.



\$5 is included now as a thank you in advance!

Complete this survey online using the web address below {fill if in QR group: or by scanning this QR code}:
Website: https://EnergyUseSurvey.com
Your password: [StudyID]
{fill if in QR group}

We will send \$10 when you complete the questionnaire online.

The questionnaire will take about 30 minutes to complete. We have included \$5 to thank you in advance for your participation. As an additional thank you, we will mail you \$10 for completing the questionnaire online. Although your participation is not required by law, your answers will make sure that households like yours are represented in this study.

Thank you in advance for your assistance with this important study! If you have any questions, please contact our data collection team at RTI International by calling toll-free at 1-XXX-XXX-XXXX or emailing recs@rti.org.

Sincerely,

Handwritten signature of Charles Ian Mead

Charles Ian Mead, Director
Office of Energy Demand and Integrated Statistics
U.S. Energy Information Administration





# Department of Energy

Washington, DC 20585

[XXX:XXXXXXXXX/BARCODE]  
[NPC ID XXXXXXXXXXXXXXXXXXXXXXXXXX ]  
[CITY] RESIDENT  
[STREET ADDRESS]  
[CITY, STATE ZIP]  
[Barcode]



Estimado(a) residente de [CityMixed]:

Le escribo para pedirle su ayuda en un estudio a nivel nacional que está realizando la Administración de Información Energética de Estados Unidos, que es la agencia estadística y analítica del Departamento de Energía de Estados Unidos. Mediante este estudio, aprenderemos cómo se usa la energía en apartamentos, casas y otros tipos de viviendas, lo cual es información que no está disponible en ningún lugar. Esta información es fundamental para entender las necesidades de energía futuras y mejorar la eficiencia.

Le pedimos que nos ayude con este estudio y complete la Encuesta sobre Consumo de Energía en Hogares (RECS, por sus siglas en inglés). Su hogar es uno de los pocos que fueron elegidos al azar para representar a los hogares de todo el país.



¡Incluimos a la presente **\$5 dólares** para agradecerle en forma anticipada!

**Complete esta encuesta por Internet visitando esta dirección web** *{fill if in QR group: o escaneando este código QR}*:



**Sitio web:** <https://encuestaenergia.com>

**Su contraseña:** [StudyID]

{fill if in QR group}



Le enviaremos **\$10 dólares** cuando responda el cuestionario por Internet.

Completar el cuestionario le tomará como unos 30 minutos. Incluimos \$5 dólares para agradecerle en forma anticipada por su participación. Como agradecimiento adicional, le enviaremos \$10 dólares por responder el cuestionario por Internet. Aunque su participación no es obligatoria por ley, sus respuestas asegurarán que hogares como el suyo estén representados en este estudio.

¡Le agradecemos en forma anticipada por su ayuda con este importante estudio! Si tiene alguna pregunta, comuníquese con nuestro equipo de recopilación de datos de RTI International llamando al número gratuito 1-XXX-XXX-XXXX o enviando un correo electrónico a [recs@rti.org](mailto:recs@rti.org).

Atentamente,

Charles Ian Mead, Director  
Oficina de Demanda Energética y Estadísticas Integradas  
Administración de Información Energética de Estados Unidos

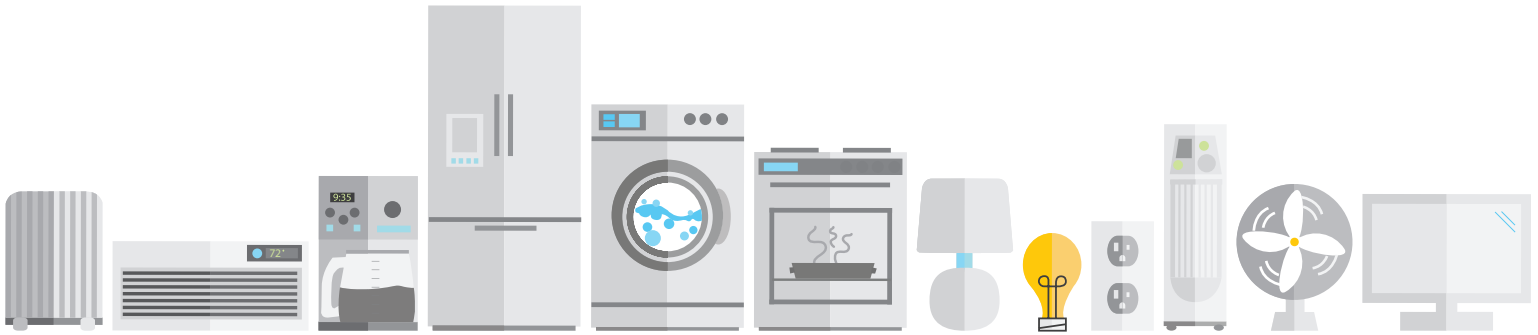


### **3. Reminder 8.5X5.5" Bifold Postcard 1**



Residential Energy Consumption Survey  
U.S. Department of Energy  
C/O RTI International  
Cox Building (Data Capture)  
0215930.006.002.004  
PO Box 12194  
Research Triangle Park, NC 27709-2194

[CITY] RESIDENT  
[RECIPIENT ADDRESS]  
[CITY ST ZIP]





Dear [CityMixed] Resident:

A few days ago, I mailed you a letter asking you to complete a questionnaire about household energy use.

If you or someone in your home has already completed the questionnaire, please accept my sincere thanks. If not, please do so today. Please remember that your address cannot be replaced in the study, and by participating, you are representing many other similar homes across the country. The website and your password are printed on the inside of this postcard.

If you have any questions, please contact our data collection team at RTI International by calling toll-free at 1-XXX-XXX-XXXX or emailing [recs@rti.org](mailto:recs@rti.org).

Many thanks,

Charles Ian Mead, Director  
Office of Energy Demand and Integrated Statistics  
U.S. Energy Information Administration

Estimado(a) residente de [CityMixed]:

Hace unos días le envié por correo una carta pidiéndole que completara un cuestionario sobre el uso de la energía en su hogar.

Si usted u otro miembro de su hogar ya completó el cuestionario, acepte mi más sincero agradecimiento. Si todavía no lo hizo, le pedimos que lo haga hoy. Recuerde que su dirección no puede ser reemplazada en el estudio y que, con su participación, representa a muchos otros hogares similares de todo el país. El sitio web y la contraseña se muestran en el interior de esta postal.

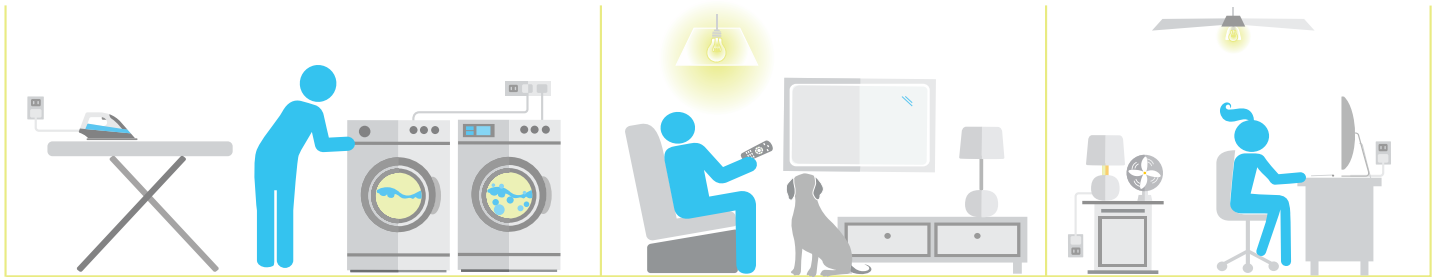
Si tiene alguna pregunta, comuníquese con nuestro equipo de recopilación de datos de RTI International llamando al número gratuito 1-XXX-XXX-XXXX o enviando un correo electrónico a [recs@rti.org](mailto:recs@rti.org).

Muchas gracias,

Charles Ian Mead, Director  
Oficina de Demanda Energética y Estadísticas Integradas  
Administración de Información Energética de Estados Unidos



Independent Statistics and Analysis  
**U.S. Energy Information  
Administration**



**English version/Versión en inglés**

**Website:** <https://EnergyUseSurvey.com>

**Your password:** [StudyID]

**We will mail you \$10 in cash after you complete the questionnaire online.**

{fill if in QR group}

English

**Spanish version/Versión en español**

Español

**Sitio web:** <https://encuestaenergia.com>

**Su contraseña:** [StudyID]

**Le enviaremos \$10 dólares en efectivo por correo postal después que complete el cuestionario por Internet.**

{fill if in QR group}



## **4. Reminder Letter (1/3 sample)**



Department of Energy  
Washington, DC 20585

[XXX:XXXXXXXXX/BARCODE]  
[NPC ID XXXXXXXXXXXXXXXXXXXXXXXXXX ]  
[CITY] RESIDENT  
[STREET ADDRESS]  
[CITY, STATE ZIP]  
[Barcode]



Dear [CityMixed] Resident:

This is a request of your household to participate in the Residential Energy Consumption Survey (RECS). Your address was randomly selected to represent many other households in the United States and cannot be replaced. It is important that we hear from people who live in apartments, houses, and other types of homes for the results of this survey to be accurate. If you want to see how past results from this survey have been used, please visit [www.eia.gov/recs](http://www.eia.gov/recs).

**Reminder to participate:**

**Complete the online survey**

We will mail you **\$10** after you complete your **online** questionnaire.

**Website:** <https://EnergyUseSurvey.com>  
**Your password:** [StudyID]

{fill if  
in QR  
group}

If you have any questions, please contact our data collection team at RTI International by calling toll-free at 1-XXX-XXX-XXXX or emailing [recs@rti.org](mailto:recs@rti.org).

Respectfully and with appreciation,

Charles Ian Mead, Director  
Office of Energy Demand and Integrated Statistics  
U.S. Energy Information Administration





## **5. Survey Mailing 2 Cover Letter**



Department of Energy  
Washington, DC 20585



[XXX:XXXXXXXXX/BARCODE]  
[NPC ID XXXXXXXXXXXXXXXXXXXXXXXXXX ]  
[CITY] RESIDENT  
[STREET ADDRESS]  
[CITY, STATE ZIP]  
[Barcode]


**We will send you:**  
**\$10** when you **complete** the survey (web or paper)  
**+ \$10** more if you **choose web** instead of paper  

---

**= \$20** total for **web** or **\$10** total for **paper**

Dear [CityMixed] Resident:

Recently, I sent you a letter asking for your help with a study about household energy use. If you or someone in your home has already completed the Residential Energy Consumption Survey (RECS), please accept my sincere thanks. If not, please complete the survey online by typing in the web address{fill if in QR group; scanning the QR code,} or mailing back the enclosed questionnaire.

 **Website:** <https://EnergyUseSurvey.com>  
**Your password:** [StudyID]

If you prefer, you may complete the enclosed questionnaire and return it in the postage-paid envelope.

{fill if in QR group}

The questionnaire will take about 30 minutes to complete. To thank you for participating, we will mail you \$10 in cash for completing and returning the enclosed questionnaire by mail or \$20 for completing the questionnaire online.

If you have any questions, please contact our data collection team at RTI International by calling toll-free at 1-XXX-XXX-XXXX or emailing [recs@rti.org](mailto:recs@rti.org).

Thank you in advance for your assistance with this important study!

Sincerely,

Charles Ian Mead, Director  
Office of Energy Demand and Integrated Statistics  
U.S. Energy Information Administration

**PS: The enclosed information sheet provides additional information about the RECS, including answers to frequently asked questions and some results from recent studies.**







## **6. Reminder 8.5X5.5" Bifold Postcard 2**

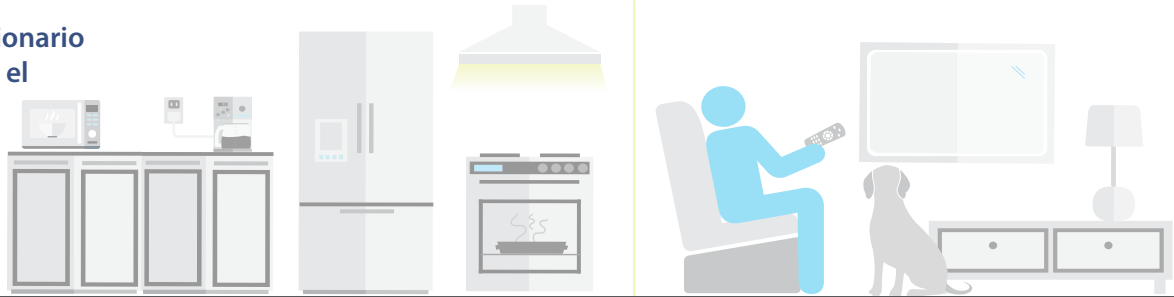


Residential Energy Consumption Survey  
U.S. Department of Energy  
C/O RTI International  
Cox Building (Data Capture)  
0215930.006.002.004  
PO Box 12194  
Research Triangle Park, NC 27709-2194

**We will mail \$10 when you complete the questionnaire, plus an extra \$10 (for total of \$20) if you complete the questionnaire online instead of using the paper form.**

**Le enviaremos \$10 dólares por correo postal cuando complete el cuestionario, más \$10 dólares adicionales (un total de \$20 dólares) si completa el cuestionario por Internet en lugar de usar el formulario en papel.**

[CITY] RESIDENT  
[RECIPIENT ADDRESS]  
[CITY, ST ZIP]



Dear [CityMixed] Resident:

A few weeks ago, I contacted you about participating in a study about energy use in apartments, houses, and other types of homes across the country. Your participation is vital to understanding U.S. energy needs.

Please complete the survey using one of the following options:

- **ONLINE:** Use the website and password printed on the inside of this postcard.
- **MAIL:** Complete the paper questionnaire we recently sent and return it in the postage-paid envelope.

We will mail you \$10 if you complete and return the paper questionnaire or \$20 if you complete the survey online instead.

We will begin summarizing results of the study in the coming weeks. It is important to include households like yours for our results to be accurate.

If you would like more information about the study, please visit [www.eia.gov/recs](http://www.eia.gov/recs), or contact our data collection team at RTI International by calling toll-free at 1-XXX-XXX-XXXX or emailing [recs@rti.org](mailto:recs@rti.org).

Many thanks!

Charles Ian Mead, Director  
Office of Energy Demand and Integrated Statistics  
U.S. Energy Information Administration

Estimado(a) residente de [CityMixed]:

Hace unas semanas, me comuniqué con usted para que participara en un estudio sobre el uso de la energía en apartamentos, casas y otros tipos de viviendas de todo el país. Su participación es muy importante para entender las necesidades de energía en los Estados Unidos.

Le pedimos que complete la encuesta mediante una de las opciones a continuación:

- **POR INTERNET:** Use el sitio web y la contraseña incluidas en esta postal.
- **POR CORREO POSTAL:** Complete el cuestionario en papel que recibió hace poco y envíelo de regreso en el sobre que no necesita estampillas (prepagado).

Le enviaremos \$10 dólares por correo postal si completa y envía de regreso el cuestionario en papel o \$20 dólares si en cambio, completa la encuesta por Internet.

Comenzaremos a hacer un resumen de los resultados del estudio en las próximas semanas. Es importante incluir hogares como el suyo para que nuestros resultados sean precisos.

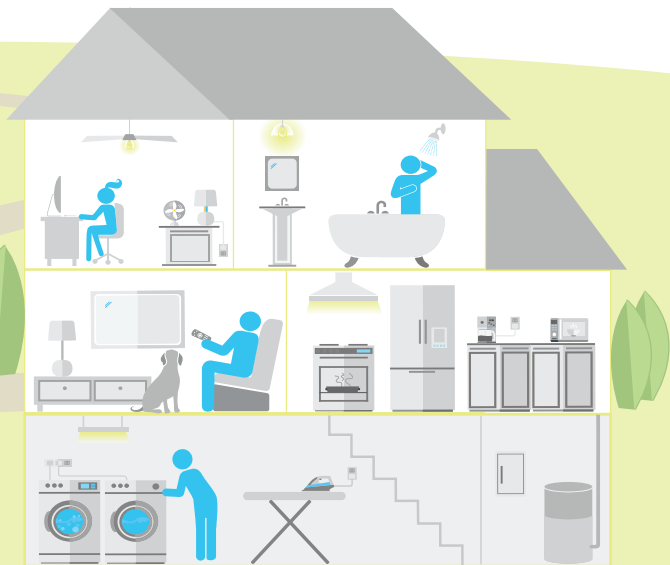
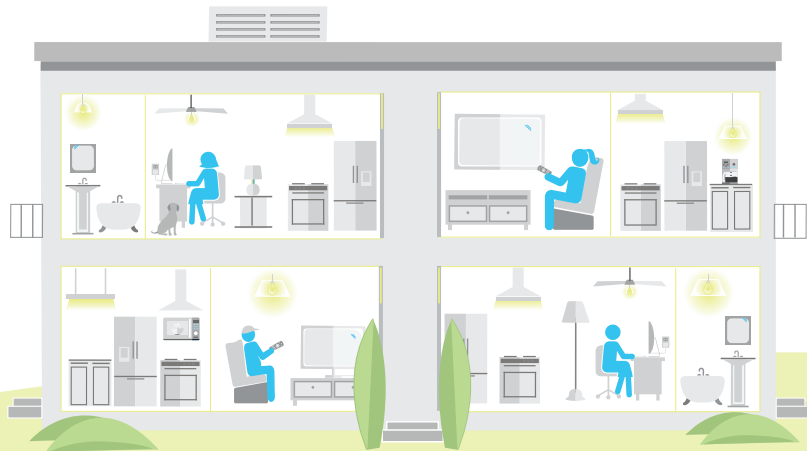
Si desea recibir más información sobre el estudio, visite [www.eia.gov/recs](http://www.eia.gov/recs) (inglés) o comuníquese con nuestro equipo de recopilación de datos de RTI International llamando al número gratuito 1-XXX-XXX-XXXX o enviando un correo electrónico a [recs@rti.org](mailto:recs@rti.org).

¡Muchas gracias!

Charles Ian Mead, Director  
Oficina de Demanda Energética y Estadísticas Integradas  
Administración de Información Energética de Estados Unidos



Independent Statistics and Analysis  
**U.S. Energy Information  
Administration**



## English version/Versión en inglés

**Website:** <https://EnergyUseSurvey.com>

**Your password:** [StudyID]

**We will mail you \$10 if you complete and return the paper questionnaire that was previously mailed to you or \$20 if you complete the survey online instead.**

{fill if in  
QR group}

English

## Spanish version/Versión en español

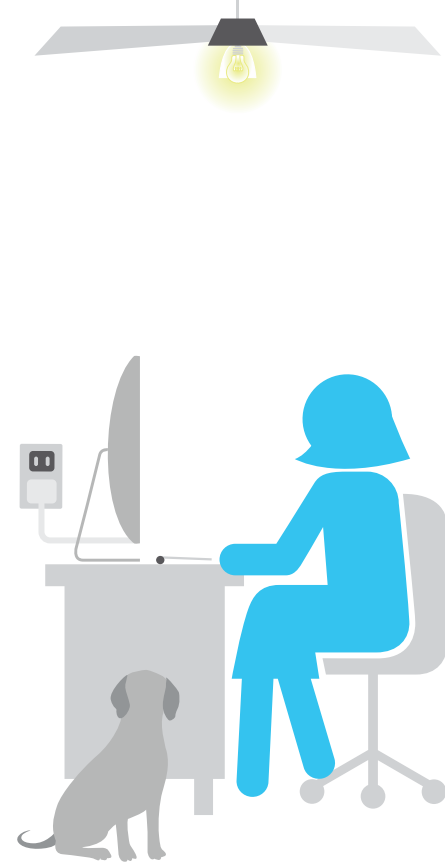
Español

**Sitio web:** <https://encuestaenergia.com>

**Su contraseña:** [StudyID]

**Le enviaremos \$10 dólares por correo postal si completa y envía de regreso el cuestionario en papel que recibió anteriormente por correo postal o \$20 dólares si en cambio, completa la encuesta por Internet.**

{fill if in  
QR group}



## **7. Survey Mailing 3 Cover Letter**



Department of Energy
Washington, DC 20585

[XXX:XXXXXXXXX/BARCODE]
[NPC ID XXXXXXXXXXXXXXXXXXXXXXXXXX ]
[CITY] RESIDENT
[STREET ADDRESS]
[CITY, STATE ZIP]
[Barcode]



Dear [CityMixed] Resident:

Our research team tried to contact you earlier this [fall/year] to ask for your participation in the Residential Energy Consumption Survey (RECS) {fill if receiving final reminder; but did not receive your completed questionnaire}. {fill if NOT receiving final reminder: We did not receive your completed questionnaire, so we are asking one final time for your response.} We are concerned that people who have not yet responded may use energy in their homes in different ways than those who have already responded. Hearing from everyone helps ensure that the survey results are as accurate as possible.

Please consider these two options {fill if NOT receiving final reminder: for your final opportunity} to participate:

Option 1
We will mail you \$10 in cash once we receive your completed paper questionnaire {fill if NOT receiving final reminder: postmarked by [Date]}. You may return it using the provided postage-paid envelope.

Option 2
We will mail you \$20 instead if you complete your questionnaire online {fill if NOT receiving final reminder: by [Date]}.
Website: https://EnergyUseSurvey.com
Your password: [StudyID]
{fill if in QR group}

{fill if NOT receiving final reminder: This is the last time we will contact you about this study.} If you have any questions, please contact our data collection team at RTI International by calling toll-free at 1-XXX-XXX-XXXX or emailing recs@rti.org. Many thanks for considering our request.

Respectfully and with appreciation,

[Handwritten signature]

Charles Ian Mead, Director
Office of Energy Demand and Integrated Statistics
U.S. Energy Information Administration







## **8. Final Reminder Letter (1/3 sample)**



Department of Energy
Washington, DC 20585

[XXX:XXXXXXXXX/BARCODE]
[NPC ID XXXXXXXXXXXXXXXXXXXXXXXXXX ]
[CITY] RESIDENT
[STREET ADDRESS]
[CITY, STATE ZIP]
[Barcode]



Dear [CityMixed] Resident:

This is our final request of your household to participate in the Residential Energy Consumption Survey (RECS). Your address was randomly selected to represent many other households in the United States and cannot be replaced. It is important that we hear from people who live in apartments, houses, and other types of homes for the results of this survey to be accurate. If you want to see how past results from this survey have been used, please visit www.eia.gov/recs.

Last chance to participate:

Option 1: Complete the paper survey (mailed previously)
We will send you \$10 in cash once we receive your completed paper questionnaire postmarked by [Date]. You may return the questionnaire using the postage-paid envelope that was provided with the questionnaire.

Option 2: Complete the online survey
We will mail you \$20 after you complete your online questionnaire by [Date].
Website: https://EnergyUseSurvey.com
Your password: [StudyID]
(fill if in QR group)

This is the last time we will contact you about this study. If you have any questions, please contact our data collection team at RTI International by calling toll-free at 1-XXX-XXX-XXXX or emailing recs@rti.org.

Respectfully and with appreciation,

[Handwritten signature]

Charles Ian Mead, Director
Office of Energy Demand and Integrated Statistics
U.S. Energy Information Administration





## **9. Cover Letter for Thank You/Post-paid Incentive**



Department of Energy  
Washington, DC 20585

[XXX:XXXXXXXXX/BARCODE]  
[NPC ID XXXXXXXXXXXXXXXXXXXXXXXXXX ]  
[CITY] RESIDENT  
[STREET ADDRESS]  
[CITY, STATE ZIP]  
[POSTNET]



Dear [CityMixed] Resident:

We recently received your response to our questionnaire about household energy use, the Residential Energy Consumption Survey (RECS). Thank you very much for assisting us with this study.

We have enclosed [\$10/\$20] for you as a way of saying thanks. We greatly appreciate your participation in this study!

Sincerely,

Charles Ian Mead, Director  
Office of Energy Demand and Integrated Statistics  
U.S. Energy Information Administration

PS: You can learn more about the RECS at [www.eia.gov/recs](http://www.eia.gov/recs).





# Department of Energy

Washington, DC 20585

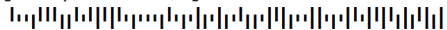
[XXX:XXXXXXXXX/BARCODE]

[NPC ID XXXXXXXXXXXXXXXXXXXXXXXXXX ]

[CITY] RESIDENT

[STREET ADDRESS]

[CITY, STATE ZIP]



Estimado(a) residente de [CityMixed]:

Hace poco recibimos sus respuestas a nuestro cuestionario sobre el uso de la energía en los hogares, la Encuesta sobre Consumo de Energía en Hogares (RECS, por sus siglas en inglés). Muchas gracias por ayudarnos con este estudio.

Le adjuntamos [\$10/\$20] dólares como muestra de agradecimiento. ¡Estamos muy agradecidos por su participación en este estudio!

Atentamente,

Charles Ian Mead, Director  
Oficina de Demanda Energética y Estadísticas Integradas  
Administración de Información Energética de Estados Unidos.

Nota: Puede obtener más información sobre la Encuesta del Consumo Residencial de Energía (RECS) en [www.eia.gov/recs](http://www.eia.gov/recs) (inglés).



# 10. Flyer

Revised on 7/25/2024



# Questions and Answers about the Residential Energy Consumption Survey (RECS)

## What is the purpose of this study?

RECS is the only comprehensive source of data about home energy use in the United States and is valuable for understanding future energy needs at the national, state, and local levels. The information that you provide will be used to develop and evaluate energy policies, as well as to improve household products, like refrigerators and air conditioners. You can learn more about RECS at [www.eia.gov/recs](http://www.eia.gov/recs).

## Why was my household selected?

Your home's address was statistically selected at random to represent up to a thousand other homes similar to yours. For the results to be valid, another home cannot be substituted for yours.

## Will identifiable information about our home be given to anyone else?

No. The information you provide will be used for statistical purposes only and is confidential by law. In accordance with the Confidential Information Protection and Statistical Efficiency Act of 2018 and other applicable Federal laws, your responses will not be disclosed in identifiable form without your consent. Every EIA employee, as well as every agent, is subject to a jail term, a fine, or both if he or she willfully discloses any identifiable information that you report.

## How and when will I receive the cash for completing the questionnaire?

We will mail you cash as a thank you once we receive your completed questionnaire. You should receive this cash within about three weeks of submitting your questionnaire. The cash will be sent to the same mailing address to which we sent this survey.

## Who can I contact to get more information about this study?

You may call the toll-free number 1-###-###-#### or email [recs@rti.org](mailto:recs@rti.org) to ask any questions you may have about the study.

## Household Energy Facts from RECS

On average, single-family homes

are **2,133 square feet**



use **12,083 kilowatt-hours** of electricity

and spend **\$2,127 per year** for home energy bills.

On average, multi-family homes

are **926 square feet per unit**



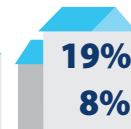
use **6,259 kilowatt-hours** of electricity per unit

and spend **\$1,194 per year** for home energy bills.



**Heating** accounts for **42%** of household energy use. Natural gas is used to heat about half of U.S. homes. Electricity is the next most common choice.

Homes built since 2000 are



**19% larger** but consume **8% more energy** than older homes.

About **84%** of households have a **clothes washer** in their home,



**59%** use a **dishwasher**,



and **34%** have **two or more refrigerators**.



Independent Statistics and Analysis  
**U.S. Energy Information Administration**

# Encuesta de Consumo de Energía en Hogares

## ¿Cuál es el propósito de este estudio?

RECS es la única fuente de datos integral sobre el uso de energía en los hogares en los Estados Unidos y es valioso para entender las necesidades de energía en el futuro a nivel nacional, estatal y local. La información que usted proporcione se usará para desarrollar y evaluar políticas energéticas, así como mejorar productos que se usan en el hogar, como refrigeradores y aires acondicionados. Puede obtener más información sobre RECS en [www.eia.gov/recs](http://www.eia.gov/recs).

## ¿Por qué seleccionaron a mi hogar?

La dirección de su hogar fue seleccionada en forma estadística por sorteo para representar hasta mil hogares como el suyo. Para que los resultados sean válidos, ningún otro hogar puede reemplazar al suyo.

## ¿Se compartirá la información que pueda identificar a nuestro hogar con alguien más?

No. La información que proporcione se utilizará solamente con fines estadísticos y es confidencial por ley. De acuerdo con la Ley de Eficiencia Estadística y Protección de Información de 2018 y otras leyes federales correspondientes, sus respuestas no se darán a conocer de forma que usted pueda ser identificado(a) sin su consentimiento. Todos los empleados de la Administración de Información Energética (EIA), así como todo agente, está sujeto a una pena de cárcel, una multa o ambas cosas si revela intencionalmente cualquier información que contenga identificación personal que usted proporcione.

## ¿Cómo y cuándo recibiré el dinero en efectivo por completar la encuesta?

Le enviaremos el dinero en efectivo por correo como muestra de agradecimiento cuando recibamos el cuestionario con sus respuestas. Usted recibirá el dinero en efectivo en las siguientes tres semanas de haber recibido su cuestionario. El dinero en efectivo se enviará a la dirección a la que le enviamos la encuesta.

## ¿Con quién me puedo comunicar para obtener más información sobre este estudio?

Puede llamar a la línea de teléfono gratuita 1-###-###-#### o enviar un mensaje electrónico a [recs@rti.org](mailto:recs@rti.org) para hacer cualquier pregunta que tenga sobre el estudio.

## Datos de RECS sobre energía en los hogares

En promedio, las viviendas unifamiliares

son de **2,133** pies cuadrados



usan **12,083** kilovatios hora de electricidad

y gastan **\$2,127** por año en facturas de electricidad.

En promedio, las viviendas multifamiliares

son de **926** pies cuadrados por unidad



usan **6,259** kilovatios hora de electricidad por unidad

y gastan **\$1,194** por año en facturas de electricidad.



**42%** del uso de energía son para calefacción de los hogares. El gas natural se usa para calentar como la mitad de los hogares en los Estados Unidos. La electricidad es la siguiente opción más común.

Las casas construidas desde el año 2000 son un



**19%** más grandes pero consumen **8%** más de energía que los hogares más viejos.

Como el **84%** de los hogares tienen lavadoras de ropa,



**59%** usan lavaplatos



y el **34%** tienen dos o más refrigeradores o neveras.



Independent Statistics and Analysis  
**U.S. Energy Information Administration**