

## Attachment 5: E-Learning Training on Outbreak Environmental Assessments (screenshots)

### Login page for the training



## Environmental Assessment Training Series (EATS)



Welcome to CDC training. Please sign in below or [create a new account here](#).

The training uses HTML5 compatible browsers. If you have problems accessing EATS or questions about the training, [contact us](#).

Username:

Password:

[Forgot Password?](#)

☐ **Conditions of Use:** I understand and agree to the Conditions of Use stated below and will use this application in the manner in which it is intended.

- This warning banner provides privacy and security notices consistent with applicable federal laws, directives, and other federal guidance for accessing this Government system, which includes (1) this computer network, (2) all computers connected to this network, and (3) all devices and storage media attached to this network or to a computer on this network.
- This system is provided for Government-authorized use only.
- Unauthorized or improper use of this system is prohibited and may result in disciplinary action and/or civil and criminal penalties.
- Personal use of social media and networking sites on this system is limited as to not interfere with official work duties and is subject to monitoring.
- By using this system, you understand and consent to the following:
  - The Government may monitor, record, and audit your system usage, including usage of personal devices and email systems for official duties or to conduct HHS business. Therefore, you have no reasonable expectation of privacy regarding any communication or data transiting or stored on this system. At any time, and for any lawful Government purpose, the government may monitor, intercept, and search and seize any communication or data transiting or stored on this system.
  - Any communication or data transiting or stored on this system may be disclosed or used for any lawful Government purpose.

Form Approved

OMB No. 0920-0980

Exp. Date 02/28/2026

CDC estimates the average public reporting burden for this collection of information (EATS 101) as 10 hours per response, including the time for reviewing instructions, searching existing data/information sources, gathering and maintaining the data/information needed, and completing and reviewing the collection of information. An agency may not conduct or sponsor, and a person is not required to respond to a collection of information unless it displays a currently valid OMB control number. Send comments regarding this burden estimate or any other aspect of this collection of information, including suggestions for reducing this burden, to: CDC/ICRO Office, 1600 Clifton Road NE, MS H21-8, Atlanta, Georgia 30329; ATTN: PRA (0920-0980)

## Attachment 5: E-Learning Training on Outbreak Environmental Assessments (screenshots)

This training on conducting environmental assessments during foodborne illness outbreak investigations contains 8 lessons (Screenshot 1). NEARS participants are encouraged to take this training.

### Screenshot 1



Lesson 1 provides an overview of the training (Screenshot 2).

### Screenshot 2



## Attachment 5: E-Learning Training on Outbreak Environmental Assessments (screenshots)

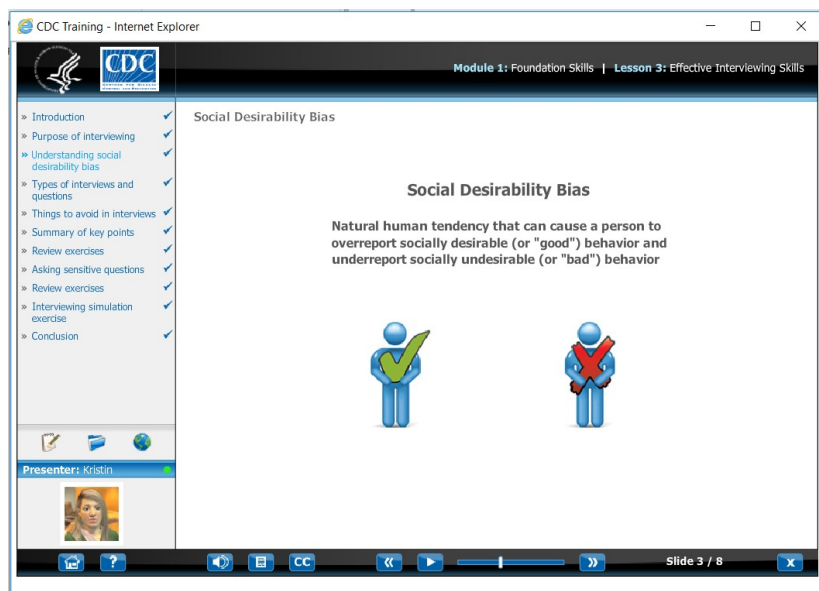
Lesson 2 provides an overview of foodborne outbreak environmental assessments (Screenshot 3).

### Screenshot 3



Lesson 3 provides information on conducting effective interviews to learn information from food workers and managers during an investigation (Screenshot 4).

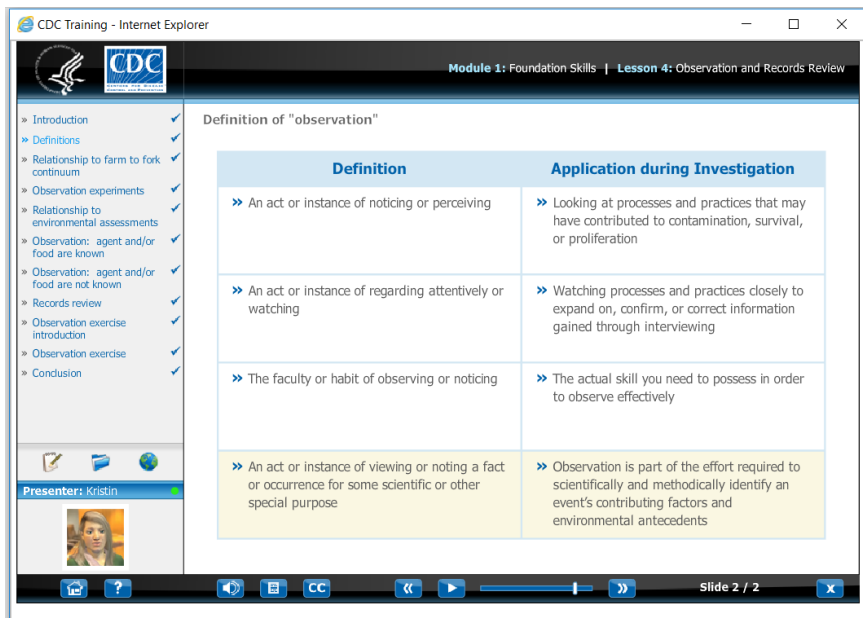
### Screenshot 4



## Attachment 5: E-Learning Training on Outbreak Environmental Assessments (screenshots)

Lesson 4 provides information on conducting observations to learn information from the environment during the investigation (Screenshot 5).

Screenshot 5



CDC Training - Internet Explorer

Module 1: Foundation Skills | Lesson 4: Observation and Records Review

» Introduction ✓  
» Definitions ✓  
» Relationship to farm to fork continuum ✓  
» Observation experiments ✓  
» Relationship to environmental assessments ✓  
» Observation: agent and/or food are known ✓  
» Observation: agent and/or food are not known ✓  
» Records review ✓  
» Observation exercise introduction ✓  
» Observation exercise ✓  
» Conclusion ✓

Presenter: Kristin

Definition of "observation"

Definition	Application during Investigation
» An act or instance of noticing or perceiving	» Looking at processes and practices that may have contributed to contamination, survival, or proliferation
» An act or instance of regarding attentively or watching	» Watching processes and practices closely to expand on, confirm, or correct information gained through interviewing
» The faculty or habit of observing or noticing	» The actual skill you need to possess in order to observe effectively
» An act or instance of viewing or noting a fact or occurrence for some scientific or other special purpose	» Observation is part of the effort required to scientifically and methodically identify an event's contributing factors and environmental antecedents

Slide 2 / 2

Lesson 5 provides information on when, where, and how to collect environmental samples during an investigation (Screenshot 6).

Screenshot 6



CDC Training - Internet Explorer

Module 1: Foundation Skills | Lesson 5: Environmental Sampling

» Introduction and objectives ✓  
» Purpose of sampling ✓  
» Types of environmental samples ✓  
» Sampling kit and transport case ✓  
» General sample collection guidelines ✓  
» The sample collection team ✓  
» Sample collection considerations ✓  
» Final points about sampling ✓  
» Conclusion ✓

Presenter: Kristin

Deciding what to collect

What types of samples to collect?

Slide 1 / 2

## Attachment 5: E-Learning Training on Outbreak Environmental Assessments (screenshots)

Lesson 6 provides information on the importance of critical thinking during investigations, and how to improve critical thinking skills (Screenshot 7).

### Screenshot 7

CDC Training - Internet Explorer

Module 1: Foundation Skills | Lesson 6: Critical Thinking Skills

Definition of Critical Thinking

Presenter: Kristin

Slide 2 / 3

Lesson 7 provides information on how to organize environmental assessment information to complete the investigation (Screenshot 8).

### Screenshot 8

CDC Training - Internet Explorer

Module 1: Foundation Skills | Lesson 7: Organizing Assessment Information

Methods and formats

Notes from interview with Food Worker A

- Last Friday, cooked burgers, steaks, and chicken on grill
- Started by getting 50 pounds of meat from frig (meat ground in house)
- Divided meat into portions & weighed on scale (5 oz. for medium, 8 oz. for large)
- Formed patties, placed in trays, and stored in frig
- Around 4:45, gets burgers out of frig and preheats grill
- Cooks burgers to order (rare, medium, well) - no temp, judges by feel (BHC)
- Butters buns and griddles one per patty

Presenter: Kristin

Slide 2 / 2

Lesson 8 provides information on implementing control strategies in the outbreak establishment to stop the current outbreak and prevent future ones (Screenshot 9).

## Attachment 5: E-Learning Training on Outbreak Environmental Assessments (screenshots)

### Screenshot 9

CDC Training - Internet Explorer

Module 1: Foundation Skills | Lesson 8: Control Strategies and Concluding Actions

Example



» Immediate control measures

» Longer-term prevention strategies

Presenter: Kristin

Slide 1 / 2

The training concludes with a 40-item test that assess mastery of the course material (Screenshot 10).


### Screenshot 10

CDC Training - Internet Explorer

Module 1: Foundation Skills | Mastery Test

» Mastery Test

Question 1



Please read [this account](#) of a local market deli's handling of rotisserie chickens, then answer the following question.

The background information mentions that business has picked up due to the popularity of the rotisserie chicken product. Which food establishment system component is the fact that business has picked up?

☐ Inputs

☐ Processes

☐ Internal System Variables

☐ Outputs

☐ Outcomes

DONE !!

Presenter: Kristin

Slide 4 / 45