



21st Century Museum Professionals Program

Funding Opportunity Number: 21MP-FY27

Assistance Listing Number: 45.032

OMB Control No.: 3137-0135

Expiration date: 8/31/2027

Table of Contents

21st Century Museum Professionals Program.....	1
Table of Contents.....	2
Before You Begin.....	3
Review the Opportunity.....	4
1. Basic Information.....	5
2. Eligibility.....	8
3. Program Description.....	13
Prepare and Submit Your Application.....	19
4. Application Contents and Format.....	20
5. Submission Requirements and Deadline.....	36
Learn About Application Review.....	38
6. Application Review Information.....	39
7. Award Notices.....	43
Find Post-Award Information.....	44
8. Post-Award Requirements and Administration.....	45
Other Information.....	47
9. Other Important Information.....	48
Additional Guidance.....	51
Guidance for Required Registrations.....	52
Guidance for Completing Forms and Other Application Components.....	54

Before You Begin

If you believe you're a good candidate for this funding opportunity, carefully review and follow these application instructions, and leave plenty of time to prepare.

Set up your SAM.gov (including Unique Entity Identifier) and Grants.gov registrations now. If you're already registered, check to make sure that your registrations are active, and that all your listed information is accurate.

Register in SAM.gov (registration can take several weeks):

Your organization must have an active [SAM.gov](#) account and a Unique Entity Identifier (UEI) before you apply.

See [Registration Requirements](#) and [Guidance for Required Registrations](#).

Register in Grants.gov (registration can take several days):

You must have an active [Grants.gov registration](#). You'll need an active SAM.gov account and a Login.gov account to register and access Grants.gov.

See [Registration Requirements](#) and [Guidance for Required Registrations](#).

Apply by 11:59 p.m. U.S. Eastern Time on November 13, 2026.

Bookmark these resources for important information:

→ [eCFR: Title 2 U.S. Code of Federal Regulations \(C.F.R.\) Part 200 \(2 C.F.R. § 200\)-- Uniform Administrative Requirements, Cost Principles, and Audit Requirements for Federal Awards](#)

→ [General Terms and Conditions for IMLS Discretionary Awards](#). IMLS may update the General Terms and Conditions before making awards for this program.

→ [21st Century Museum Professionals Program page \(IMLS.gov\)](#)



This NOFO has internal links to help you quickly find what you need. In Adobe Reader, you can go back to where you were by pressing Alt + Left Arrow (Windows) or Command + Left Arrow (Mac) on your

keyboard.



Review the Opportunity

In this step:

- 1. Basic Information.....5**
 - Opportunity Overview..... 5
 - Award Overview.....6
 - Executive Summary..... 7
 - Agency Contact Information..... 7
- 2. Eligibility.....8**
 - Eligible Applicants..... 8
 - Other Eligibility Information..... 11
 - Cost Share Requirements..... 12
- 3. Program Description.....13**
 - Agency Mission, Goals, and Objectives..... 13
 - 21MP Program Goals and Objectives..... 14
 - Performance Measures..... 15
 - Funding Restrictions..... 15
 - Authorizing Statute and Regulations..... 18
 - Equal Opportunity..... 18

1. Basic Information

Opportunity Overview

Federal Awarding Agency	Institute of Museum and Library Services
Funding Opportunity Title	21 st Century Museum Professionals Program
Announcement Type	Modification of fiscal year (FY) 2026 Notice of Funding Opportunity
Funding Opportunity Number	21MP-FY27
Assistance Listing Number	45.032
Type of Assistance Instrument	Grant
Application Deadline	Submit through Grants.gov by 11:59 p.m. U.S. Eastern Time on November 13, 2026.

Award Overview

Key Dates

Anticipated date of notification of award decisions	July 2027 (subject to the availability of funds and IMLS discretion)
Anticipated start dates for new awards	Projects must begin on August 1, 2027.
Anticipated period of performance	August 1, 2027 – July 31, 2030. Project activities may be carried out for one to three years

Funding Details

Total amount of funding IMLS expects to award through this announcement	\$2,000,000
Expected performance indicators, targets, baseline data, and data collection	See Performance Measures .
Anticipated number of awards	8
Expected amount of individual awards	\$100,000 - \$500,000
Average amount of funding per award in previous years	\$250,000

The funding in the above Award Overview is subject to the availability of funds and the Institute of Museum and Library Services' (IMLS's) discretion. We are not bound by any estimates in this announcement.

Contingent upon the availability of funds, the quality of applications, and IMLS's discretion, we may make additional awards from the pool of unfunded applications from this competition.

Executive Summary

The 21st Century Museum Professionals (21MP) grant program supports projects that build career pathways, strengthen professional networks, and identify and share effective workforce education and training practices in the museum field.

The goals of the program are to

- Support the professional development of the current museum workforce; and
- Recruit and train future museum professionals.

IMLS recognizes the important role of strong local and regional networks in providing peer-to-peer learning, training, and mentoring opportunities for the museum workforce. Partnerships among museums, museum-serving organizations, and institutions of higher education are vital to expanding alternative career pathways for people in the museum workforce throughout a city, county, state, region, or the nation.

We encourage 21MP projects to:

- involve partnerships that generate opportunities for career development, including alternative pathways to upskill early-career professionals, and strengthen peer networks beyond a single institution;
- engage museum staff, leadership, or volunteers at any stage of career development, including providing opportunities to encourage non-traditional applicants and emerging professionals to enter the museum workforce;

- reflect a thorough understanding of relevant theory and effective practice in workforce training and professional development for the museum field.

The primary audiences for this program are museums, museum service organizations and affiliated nonprofits, and museum professionals. Secondary audiences include museum visitors and future museum professionals.

Eligibility is restricted to organizations that are:

- Located in the United States or any U.S. Territories or Freely Associated States; AND
- A unit of a State, local or Tribal government or a private, nonprofit organization; AND
- A museum, an organization or association related to the museum field, an institution of higher education.

Agency Contact Information

IMLS staff are available by phone and/or email to answer programmatic and administrative questions relating to this grant program.

2. Eligibility

Eligible Applicants

To be eligible for an award under the 21MP program, your organization must meet **all three** of the following eligibility criteria.



Your organization must be:

- ✓ a unit of State, local, or Tribal government; or
- ✓ a private, nonprofit organization that has tax-exempt status under the Internal Revenue Code of 1954, as amended (you will need to include proof of this if applicable to your organization. [See Conditionally Required Documents](#) for more information);

and:



Your organization must be located in:

- ✓ one of the 50 States of the United States of America,
- ✓ the District of Columbia,
- ✓ the Commonwealth of Puerto Rico,
- ✓ the U.S. Virgin Islands,
- ✓ Guam,
- ✓ American Samoa,
- ✓ the Commonwealth of the Northern Mariana Islands,
- ✓ the Republic of the Marshall Islands,
- ✓ the Federated States of Micronesia; or

- ✓ the Republic of Palau.



and:

Your organization must qualify as one of the following:

3(a) A museum that:

- ✓ uses a professional staff;
- ✓ is organized on a permanent basis for essentially educational, cultural heritage, or aesthetic purposes;
- ✓ owns or uses tangible objects, and/or living collections;
- ✓ cares for these objects; and
- ✓ exhibits these objects to the general public on a regular basis through facilities that it owns or operates.

What types of institutions are included in the term “museum”?

If they otherwise meet these requirements, “museums” include, but are not limited to:

- anthropology museums
- aquariums
- arboretums
- art museums
- botanical gardens
- children’s/youth museums
- general museums (those having two or more significant disciplines)
- historic houses/sites
- history museums
- natural history museums
- nature centers
- planetariums
- science/technology centers
- specialized museums (limited to a single distinct subject), and
- zoological parks.

What does it mean to “use a professional staff”?

An institution uses a professional staff if it employs at least one full-time staff member, or the equivalent, whether paid or unpaid,

primarily engaged in the acquisition, care, or exhibition to the public of objects owned or used by the institution.

What does it mean to “exhibit the objects to the general public”?

An institution exhibits objects to the general public if such exhibition is a primary purpose of the institution. An institution that exhibits objects to the general public for at least 120 days a year through facilities it owns or operates is deemed to exhibit objects to the general public on a regular basis.

An institution that does not have the exhibition of objects as a primary purpose and/or does not exhibit objects to the public for at least 120 days a year may be determined to be eligible as a museum under certain circumstances. **For more information, please see 2 C.F.R. § 3187.3 Definition of a museum;** or

- 3(b)** An organization or association that engages in activities designed to advance the well-being of museums and the museum profession; or
- 3(c)** An institution of higher education, including public and nonprofit universities; or
- 3(d)** A public or private nonprofit entity that is responsible for the operation of an eligible museum that meets the criteria listed above under 1, 2, and 3(a), applying on behalf of the eligible museum.

Native American Tribal organizations are encouraged to apply if they otherwise meet the above eligibility requirements.

Eligibility of Museums Located within a Parent Organization

A museum located within a parent organization that is a State, local, or Tribal government or multipurpose nonprofit entity, such as a, university, historical society, foundation, or cultural center, may apply on its own behalf if the museum:

- can independently fulfill all the eligibility requirements listed in the above three criteria;
- functions as a discrete unit within the parent organization;
- has its own fully segregated and itemized operating budget; and
- has the authority to make the application on its own.

When any of the last three conditions cannot be met, a museum may only apply as an organizational unit through its parent organization, and the museum must still meet the eligibility criteria listed under 1, 2, and 3(a) above.

Eligibility of Nonprofit Organization Affiliated with a Museum

We may determine that a nonprofit organization affiliated with an eligible museum may apply for this program if:

- its sole mission is to support the specified museum;
- it has the ability to administer the project; and
- it can ensure compliance with the terms of this Notice of Funding Opportunity and the applicable law, including the [IMLS Assurances and Certifications](#).

We require that you provide an agreement from the museum that details the activities the applicant and museum will perform and binds the museum to the statements and assurances in the application.

Other Eligibility Information

Application Limits



- We will not consider applications proposing to renew or add funding to active IMLS awards.
- If eligible, you may submit multiple applications for support of separate and distinct projects under this announcement and/or through other IMLS grant programs.

Partnerships and Collaborations



- Applications involving partnerships or collaborations are welcome.
- When two or more institutions or organizations work together on a project, one of them must meet all eligibility requirements, serve as the lead applicant, and administer the award on behalf of the other(s).
- If we fund the project, the lead applicant will be programmatically, fiscally, and legally responsible for the award.

Ineligible Applicants



- We will not review applications from or make awards to ineligible applicants. We will notify you if your application will not be reviewed because your organization is determined to be ineligible.
- To receive an IMLS award, your organization must be determined to be eligible and must comply with all **applicable IMLS, administrative and national policy requirements**.

Application Deadlines, Funding Range, and Completeness



- You must submit your application by the deadline in accordance with the Submission Dates and Times section of this NOFO. At its discretion and in rare circumstances, IMLS may consider a late application. IMLS retains the sole discretion to determine whether to accept a late application, and such determinations are final.
- If your request for federal funding as shown on the IMLS Budget Form, including all direct and indirect costs, is outside the funding range (less than \$100,000 or more than \$500,000), we may reject your application.
- Your application must be complete, and your project and budget must adhere to the program's **guidance** and **funding restrictions**.

Cost Share Requirements

For the 21MP program, awardees must provide funds from non-federal sources in an amount that is equal to or greater than the amount of the federal award.

Cost share is the portion of a project's total costs that is not paid by IMLS funds. Common examples of cost share include cash outlays; contribution of property and services; and in-kind contributions, such as staff or volunteer time that support project activities.

Cost share is an eligibility criterion and is not considered in the peer review of applications.

Carefully calculate any cost share that you include in your project budget. If you receive an award, you must meet your cost share commitments. If you do not include at least 1:1 cost share on your IMLS Budget Form, we may reject your application from further consideration.



[about Cost Sharing in the Budget](#)

3. Program Description

Agency Mission, Goals, and Objectives

The mission of IMLS is to advance, support, and empower America's museums, libraries, and related organizations through grantmaking, research, and policy development. These goals guide our grantmaking.

Agency-Level Goal 1

Champion Lifelong Learning

Objective 1.1

Advance shared knowledge and learning opportunities for all.

Objective 1.2

Support the training and professional development of the museum and library workforce.

Agency-Level Goal 2

Strengthen Community Engagement

Objective 2.1

Promote broad public engagement.

Objective 2.2

Support community collaboration and foster civic discourse.

Agency-Level Goal 3

Advance Collections

Objective 3.1

Support collections care and management.

Objective 3.2

Promote access to museum and library

Stewardship and Access

collections.

The 21MP program supports the achievement of these agency-level goals to facilitate the delivery of significant results consistent with IMLS's federal authorizing legislation ([20 U.S.C. §9101](#) et seq.; in particular [§9175 \(21st century museum professional program\)](#), and, as applicable, [§ 9173 \(Museum services activities\)](#)). Each award that we make through the 21MP Program will contribute meaningfully to the achievement of both program and agency-level goals.

21MP Program Goals and Objectives

21MP has two program goals and two objectives associated with each goal. You should align your proposed project with one of these goals and one of the associated objectives, and clearly identify your choices in your [Narrative](#).

21MP Program Goal 1: Support the professional development of the current museum workforce.

Objective 1.1

Develop new or enhanced professional development and training programs for the museum workforce.

Objective 1.2

Support assessment and evaluation of training and professional development programs to identify and share effective practices.

21MP Program Goal 2: Recruit and train future museum professionals.

Objective 2.1

Expand alternative pathways into the museum field by adapting higher education or training programs to be more responsive to the needs of the museum workforce.

Objective 2.2

Support assessment and evaluation of recruitment, training, and higher education or training programs to identify and share effective practices.

Performance Measures

We use four performance measures as a basis for understanding how well the 21MP program is meeting its goals and how awardees are managing individual projects.



Effectiveness: The extent to which activities contribute to achieving the intended results of the 21MP program



Efficiency: How well resources (e.g., funds, expertise, time) are used while generating maximum value for the primary audience



Quality: How well the activities meet the requirements and expectations of the primary audience (This is different from evaluating the performance of your project)



Timeliness: The extent to which each task/activity is completed within the timeframe proposed

You will need to provide a Performance Measurement Plan to describe how you will use these four performance measures to monitor and assess your performance in carrying out your project and meeting your selected **program goal and objective.**



[Learn about creating a Performance Measurement Plan.](#)

Funding Restrictions

Allowable and Unallowable Costs

You may use IMLS funds and cost share only for allowable costs as set forth in the OMB government-wide cost-principles rules and in IMLS's supplemental regulations.

Please consult [2 C.F.R. § 200](#) and [2 C.F.R. § 3187](#) for additional guidance on allowable costs.

The following lists include some examples of generally allowable costs and unallowable costs, both for IMLS funds and for cost share funds under this announcement.



Allowable Costs

- ✓ personnel salaries, wages, and fringe benefits, including annual cost of living increases
 - ✓ travel expenses for key project staff and consultants
 - ✓ materials, supplies, software, and equipment related directly to project activities
 - ✓ adaptive and/or assistive technologies and other resources and services to improve accessibility for persons with disabilities
 - ✓ participant support costs
 - ✓ third-party costs
 - ✓ design and publication costs
 - ✓ program evaluation
 - ✓ staff and volunteer training
 - ✓ paid internships/fellowships
 - ✓ stipends or honoraria for project advisors and participants
 - ✓ indirect or overhead costs
 - ✓ pre-award costs, at the discretion of and with prior written approval from the agency.
-



Unallowable Costs

- ✘ general fundraising costs, such as development office staff or other staff time devoted to general fundraising
- ✘ contributions to endowments
- ✘ general operating support
- ✘ acquisition of collections
- ✘ general advertising or public relations costs designed solely for promotional activities other than those related to the specific project
- ✘ construction or renovation of facilities (generally, any activity involving the construction trades is not an allowable cost)
- ✘ social activities, receptions, or entertainment
- ✘ research projects.

You must **explain all proposed expenses in the Budget Justification.**

If you have questions about whether specific activities are allowable, **contact us for guidance.**

Costs for Third Parties

When a project requires the payment of federal funds to third parties (such as partners, consultants, collaborators, vendors, and/or service providers), it is your responsibility to determine whether you should characterize a third party as a subrecipient or a contractor and include that determination in your agreement with them.

IMLS grant funds cannot be provided to any federal agency serving as a third party.



Learn more:

[2 C.F.R. § 200.1 for definitions of contract, contractor, subaward, and subrecipient;](#)

[2 C.F.R. § 200.331 \(Subrecipient and contractor\)](#)

Indirect Costs

In your budget, you can decide to:

- use a rate that does not exceed your current indirect cost rate already negotiated with a federal agency;
- use a rate proposed to a federal agency for negotiation, but not yet finalized, as long as it is finalized by the time of the award. However, the rate must be finalized by the time your budget is approved before we make an award;
- use a rate not to exceed 15 percent of the Modified Total Direct Costs (MTDC) if your organization currently does not have a Federally Negotiated Indirect Cost Rate Agreement (NICRA) and is not subject to other requirements; or
- not include any indirect costs.



Costs in the Budget

Authorizing Statute and Regulations



Statute: 20 U.S.C. § 9101 et seq.; §9175 (21st century museum professional program), and, as applicable, § 9173 (Museum services activities)

Regulations: 45 C.F.R. Chapter XI, 2 C.F.R. Chapter XXXI, and 2 C.F.R. § 200

Award recipients must follow the IMLS regulations that are in effect at the time of the award is made.

The OMB guidance on Uniform Administrative Requirements, Cost Principles, and Audit Requirements for Federal Awards (Uniform Guidance) is set forth at [2 C.F.R. § 200](#).

*Please note: OMB is in the process of updating the Uniform Guidance at 2 CFR § 200 ([Uniform Guidance Revisions](#)). For IMLS grant awards made on or after October 1, 2026, the Uniform Guidance Revisions will apply.

IMLS regulations at [2 C.F.R. § 3187](#) formally adopt the Uniform Guidance and include certain agency-specific provisions.

Equal Opportunity

IMLS does not discriminate on the basis of race, color, national origin, sex, disability, or age.

For further information, email ogc@imls.gov or write to the Office of the General Counsel, Institute of Museum and Library Services, 200 Constitution Ave. NW, Suite N-3627, Washington, DC, 20210.



Prepare and Submit Your Application

In this step:

4. Application Contents and Format.....	20
Get Ready to Apply.....	20
Registration Requirements.....	20
Application Package.....	20
Readiness Checklist.....	21
Prepare Your Application.....	22
Application Components.....	22
Instructions for Required Documents.....	25
Conditionally Required Documents.....	32
Supporting Documents.....	33
Application Checklist.....	34
Disclosure of Information in Applications.....	35
5. Submission Requirements and Deadline.....	36
Submission Instructions.....	36
Programmatic, Administrative and Technical Support Contacts.....	36

IMLS..... 36

Federal Service Desk..... 36

Grants.gov..... 36

Submission Dates and Times..... 37

Emergency Extensions..... 37

Intergovernmental Review..... 37

4. Application Contents and Format

Get Ready to Apply

Registration Requirements

Before you apply, your organization must have:

- ✓ a **Unique Entity Identifier (UEI) number**;
- ✓ a current and active **System for Award Management (SAM) registration**; and
- ✓ an **active Grants.gov registration** with an approved Authorized Organization Representative (AOR).

Check your materials and registrations now to ensure that they are accurate, current, and active.

We strongly recommend that you obtain a UEI number and complete registration with SAM and Grants.gov well ahead of the application deadline.



See Guidance for Required Registrations for detailed information and resources to help you make sure your required registrations are

Application Package

You must apply electronically through Grants.gov Workspace or a Grants.gov system-to-system solution.

Use one of the following identifiers to locate the application package in **Grants.gov**:

- **Funding Opportunity Number:** 21MP-FY27
- **Assistance Listing Number:** 45.032

To request an audio recording of this announcement, call 202-653-4744. To request a paper copy of this announcement, call 202-653-4744 or email imls-museumgrants@imls.gov.

Readiness Checklist

Applying for an award takes time. Registering with [SAM.gov](https://sam.gov) can take several weeks. There are a few important things you'll need to do before you can apply.

Be sure to...

- Carefully read through this NOFO to get a good understanding of [how to craft your narrative](#), [what documents we require](#), and [how we review applications](#).
- [Review the eligibility requirements for this program](#) and confirm that your organization is eligible.
 1. Organization type
 2. Organization location
 3. Museum eligibility criteria
- [Review the Funding Restrictions](#) and keep them in mind as you develop your application and budget.
- Register in SAM.gov (or make sure your organization's registration is current) as early as possible. **Remember that SAM.gov registration can take several weeks.**

To register, go to [SAM.gov Entity Registration](#) and click Get Started.

See the [SAM.gov Entity Registration checklist](#) for what you'll need to register in SAM.
- Get a Unique Entity Identifier (UEI) number. You'll get your organization's UEI when you register in [SAM.gov](#).
- [Register in Grants.gov](#).
- Make sure you understand the [review criteria](#).
- Review the [post-award requirements](#) to make sure you can meet them.
- Find the application package. Go to [Grants.gov](#) and search for **Funding**

Prepare Your Application

This section outlines the components, format, and content requirements to help you prepare a complete application.

Application Components

Required Documents

You must include all these components for your application to be considered complete.

Component	File Requirements
<u>The Application for Federal Domestic Assistance/Short Organizational Form</u> (SF-424S)	Format: Grants.gov web form
<u>IMLS Museum Program Information Form</u>	Format: Grants.gov web form
<u>Organizational Profile</u>	File Format: PDF Page Limit: 1 page (recommended). File Name: OrganizationalProfile.pdf
<u>Narrative</u>	File Format: PDF Page Limit: 7 pages max. File Name: Narrative.pdf

Component	File Requirements
<u>Schedule of Completion</u>	File Format: PDF Page Limit: 1 page per year (recommended) File Name: Scheduleofcompletion.pdf
<u>IMLS Budget Form</u>	File Format: IMLS PDF form File Name: Budget.pdf
<u>Budget Justification</u>	File Format: PDF File Name: Budgetjustification.pdf
<u>List of Key Project Staff and Consultants</u>	File Format: PDF Page Limit: 1 page (recommended) File Name: Projectstaff.pdf
<u>Resumes of Key Project Staff and Consultants</u>	File Format: PDF Page Limit: 2 pages each (recommended) File Name: Resumes.pdf
<u>Performance Measurement Plan</u>	File Format: PDF Page Limit: 2 pages (recommended) File Name: Perfmeasurement.pdf

Conditionally Required Documents

You must include these components if they are applicable to your institution or your project. Refer to [Conditionally Required Documents](#) to determine which, if any, you need to include in your application.

Component	File Requirements
<u>Proof of Private, Nonprofit Status</u>	File Format: PDF File Name: Proofnonprofit.pdf
<u>Final Federally Negotiated Indirect Cost Rate Agreement</u>	File Format: PDF File Name: Indirectcostrate.pdf
<u>Digital Products Plan</u>	File Format: PDF Page Limit: 2 pages (recommended) File Name: Digitalproduct.pdf

Supporting Documents

You may include the following additional documents as needed to support your proposal.

Component	File Requirements
<u>Supporting Documents</u> (Information that supplements the Narrative and supports your project description) <u>D3e. Supporting Documents</u>	File Format: PDF File Name(s): Supportingdoc1.pdf Supportingdoc2.pdf Supportingdoc3.pdf

Format, Name, and Sequence of Application Components

Document Format and File Size

Aside from the SF-424S and the IMLS Museum Program Information Form, which are created in Grants.gov Workspace, all application components must be submitted as PDF documents.

Use standard formatting and fonts in your application components and limit individual file sizes to 200mb or less.

Page Limits

Note the page limits listed in the [table of Application Components](#). We will remove any pages over the stated limits and they will not be sent to peer review; any additional pages will not be considered part of your application.

Naming Convention

Use the naming conventions indicated in the [table of Application Components](#).



IMPORTANT: Attachment file names are limited to the following characters: A-Z, a-z, 0-9, underscore (_), hyphen (-), space, period (.). If attachment file names use any other characters, the application may be rejected by Grants.gov.

Attachment Order

In Grants.gov, attach all application components in the sequence listed in the table above. Use all 15 fields in the “Attachments Form” first. If your application requires more than 15 attachments, select the “Other Attachments Form.” Note that if you select the “Other Attachments Form,” you will be required to upload the 16th attachment in the “Mandatory Other Attachment” field first; any subsequent attachments should be uploaded under the “Optional Other Attachments.”

Instructions for Required Documents

Application for Federal Domestic Assistance/Short Organizational Form (SF-424S)

The SF-424S is part of the application package that you complete in Grants.gov Workspace. It collects basic information about your organization and your project.



Find detailed instructions to help you complete these Grants.gov forms:

→ [Detailed instructions for completing the SF424S](#)

[Museum Program Information Form](#)

IMLS Museum Program Information Form

The IMLS Museum Program Information Form is part of the application package that you complete in Grants.gov Workspace. In this form, we collect details about your project, its goals, and financial information.

Organizational Profile

Write a brief Organizational Profile for the lead applicant and save it as a PDF. We recommend limiting the Organizational Profile to one page. Include the following information:

- Your organization's mission or statement of purpose, noting the source, approving body, and date of the official document in which it appears.
- Your organization's governance structure. If your museum is located within a parent organization or if your organization is a nonprofit affiliated with a museum, explain the relationship.
- Your service area (i.e., communities and/or audiences served, including size, demographic characteristics, and geographic area).
- A brief history of your organization, focusing on the organizational unit that will be directly involved in carrying out the project.

Narrative

Write a Narrative using the structure and format below and save it as a PDF. Be clear and concise and limit the use of technical jargon and acronyms. Include references throughout your Narrative to any Supporting Documents that provide supplementary material.

When writing your narrative, consider the [review criteria](#) and the [program goal and objective](#) you selected.

Narrative - Required Format

Page Limit: 7 numbered pages

We will remove any pages over the limit and will not send them to peer review; any additional pages will not be considered part of your application.

File Name: Narrative.pdf

IMPORTANT: Attachment file names are limited to the following characters: A-Z, a-z, 0-9, underscore (_), hyphen (-), space, period (.). If attachment file names use any other characters, the application may be rejected by Grants.gov.

File Format: PDF

Font Size: 11-point or higher

Margins: 0.5 inches or greater

Components: Organize the Narrative using the following section headings, and respond to the question prompts in the [Guidance for Narrative](#)

Sections:

- Project Justification
- Project Work Plan
- Project Results

Guidance for Narrative Sections

Narrative Section Guidance

Project Justification



- Which **21MP program goal and associated objective** will your project address?
 - What need, problem, or challenge will your project address, and how was it identified?
 - Who is the primary audience for your project and how have they been involved in the planning? “Primary audience” refers to those who will be most immediately and positively affected by your project. Identify the number of individuals in the primary audience or in each group, if you identify more than one.
 - Who are the ultimate beneficiaries for this project? “Beneficiaries” refers to those who are likely to be aided in the long-term by your project. They may or may not be the same as your “primary audience.”
 - How will the museum workforce and any associated professional networks benefit from your project?
-

Narrative Section Guidance

Project Work

Plan



- What specific activities will you carry out?
- Who will plan, implement, and manage your project?
- What time, financial, personnel, and other resources will you need to carry out the activities?
- How will you recruit and select participants from the primary audience?
- What are the risks to the project and how will you mitigate them?
- How will you track your progress toward achieving your intended results?



Project Results

- What are your project's intended results and how will they address the need, problem, or challenge you have identified?
- How will the knowledge, skills, behaviors, and/or attitudes of the primary audience change because of your project?
- What products will result from your project, and how will you make them accessible to the primary audience?
- How will you sustain the benefit(s) of your project beyond the conclusion of the award period of performance?

Refer to the Evaluation Resources on the IMLS website for program planning tools, evaluation definitions, and methodologies.

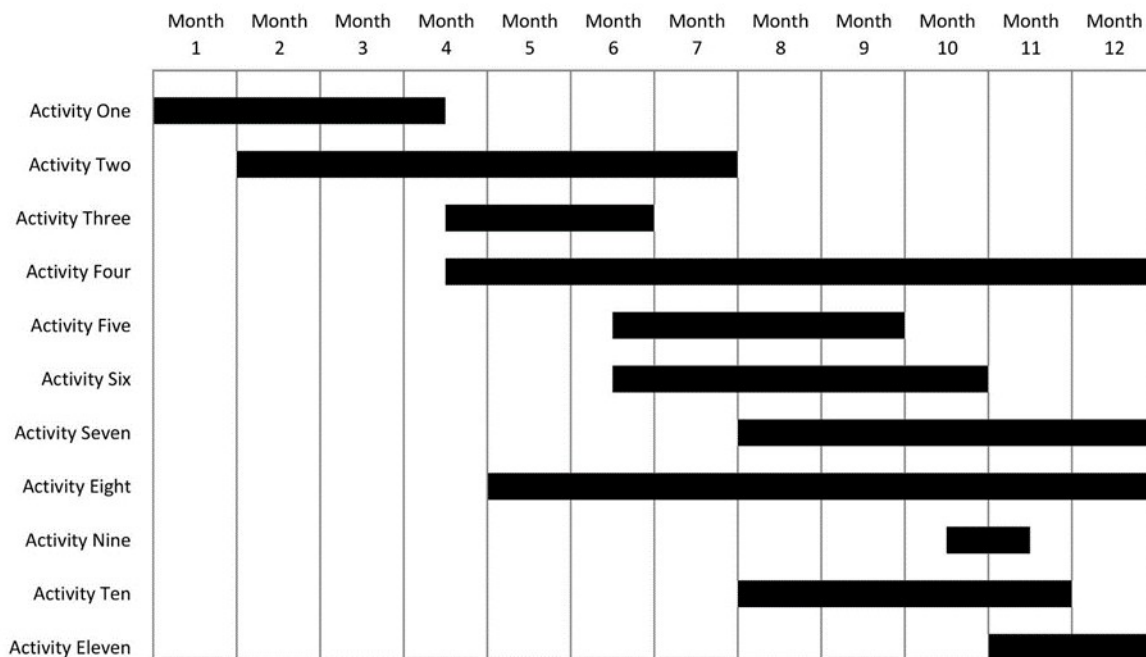
Refer to our guidance on disclosing information in your application.

Reviewers may also visit your organization's website, as listed on the SF-424S form provided with your application.

Schedule of Completion

The Schedule of Completion should reflect each major activity identified in your application Narrative and the project dates identified on the SF-424S and the IMLS Budget Form. It should show when each major project activity will start and end. We recommend that the schedule should not exceed one page per project year.

See the sample Schedule of Completion below. Save your document as a PDF.



IMLS Budget Form

Download and complete the current [IMLS Budget Form \(PDF, 1.67MB\)](#).



Find detailed instructions to help you complete an IMLS Budget Form and write a Budget Justification:

→ [Detailed instructions for completing the IMLS Budget Form](#)

[Justification](#)

Budget Justification

Write a Budget Justification to identify how each expense supports your proposed activities, detail how you calculated all costs, and provide supporting documentation including any dollar amounts that you may have consolidated and summarized on the IMLS Budget Form. We recommend that your Budget Justification has a section for each heading on the IMLS Budget Form. Save this document as a PDF.

List of Key Project Staff and Consultants

Write a list of only those staff and consultants whose expertise is essential to the success of the project and save it as a PDF. Do not list all staff involved in the project. If you cannot identify key project staff by the application deadline, then instead list the position title(s). This list must include the Project Director listed in Item 7 of the SF-424S. We recommend limiting this list to one page.

Resumes of Key Project Staff and Consultants

Provide a resume for each person whose expertise is essential to the success of the project. We recommend limiting each resume to two pages. Use standard fonts and formatting and save all resumes as a single PDF. You must include the resume of the Project Director listed in Item 7 of the SF-424S.

If you cannot identify key project staff by the application deadline, then instead of a resume, provide position description(s) including the qualities, range of experience, and education necessary to successfully implement and complete all proposed project activities.

Performance Measurement Plan

Your Performance Measurement Plan should show how you will monitor and assess your performance as an award recipient from the perspectives of **Effectiveness, Efficiency, Quality, and Timeliness** for your overall project.

For each performance measure, identify what data you will collect from what source, the method you will use to collect it, and according to what schedule. The

chart below provides sample statements for each measure and a space to record your own. **A fillable version of the chart is provided**, (DOCX, 25KB), which you may, but are not required, to use. We recommend limiting your Performance Measurement Plan to two pages. Save your document as a PDF.

Applicant Name:

Project Title:

Performance Measure	Data We Will Collect (e.g., counts, costs, weights, volumes, temperatures, percentages, hours, observations, opinions, feelings)	Source of Our Data (e.g., members of the primary audience, project staff, stakeholders, internal/external documents, recording devices, databases)	Method We Will Use (e.g., survey, questionnaire, interview, focus group, informal discussion, observation, assessment, document analysis)	Schedule (e.g., daily, weekly, monthly, quarterly, annually, beginning/end)
Effectiveness: The extent to which activities contribute to achieving the intended results	<p>Example: At the end of each month, using a report prepared by the registrar, we will compare the cumulative count of rehoused objects against the total number proposed for the project.</p> <p>Example: At the end of each project year, our external consultant will present results of the ongoing observation-based evaluation and compare them against our intended project results.</p>			
Efficiency: How well resources (e.g., funds, expertise, time) are used while generating maximum value for the primary audience	<p>Example: Twice per year, we will assess our expenditures for program supplies on a per-person-served basis.</p> <p>Example: Each quarter, we will calculate the dollar value of volunteer hours contributed to the project as recorded in our online volunteer management system.</p>			
Quality: How well the activities meet the requirements and expectations of the primary audience	<p>Example: At the beginning, the mid-point, and end of the project, we will administer a satisfaction survey to staff who have participated in the training.</p> <p>Example: We will gather opinions about our online services through questionnaires provided to every 20th user.</p>			
Timeliness: The extent to which each task/activity is completed within the proposed timeframe	<p>Example: Every six months, our Project Director will assess the fit between our proposed Schedule of Completion and actual activity completion dates.</p> <p>Example: Each quarter, each project partner will submit to our Project Director a templated report showing their progress on meeting project milestones.</p>			

[\(Back to Table of Application Components\)](#)

Conditionally Required Documents

These documents may be required for your application, depending specific program requirements. Refer to the table below to determine which, if any, Conditionally Required Documents you need to provide.

If you fail to provide a Conditionally Required Document, we may consider your application incomplete, and reject it from further consideration.

If you are:	Then you must provide:	Notes:
Applying as a private, nonprofit institution <i>(as indicated by choosing "M" as the Applicant Type code in 5d of the SF-424S form).</i>	A copy of the IRS letter indicating your eligibility for nonprofit status under the applicable provision of the Internal Revenue Code of 1954, as amended.	You must submit this letter with each application even if you have previously submitted it with other applications. We will not accept a letter of State sales tax exemption as proof of nonprofit status. <u>See 2 C.F.R. § 3187.7(b).</u>
Using a Federally negotiated indirect cost rate in your budget.	A copy of your current Final Federally Negotiated Indirect Cost Rate Agreement.	If you do not have a current negotiated (including provisional) indirect cost rate and elect to charge a <i>de minimis</i> rate of up to 15 percent of Modified Total Direct Costs (<u>see 2 C.F.R. § 200.414(f)</u>), you do not need to provide any documentation.

If you are:	Then you must provide:	Notes:
Proposing to generate any digital content, resources, assets, or software	<p>A Digital Products Plan (two pages, recommended)</p> <p>Describe the types of digital content or products you will create during your project and address issues relating to availability, access, and sustainability for each type.</p>	See Guidance for creating a Digital Products Plan .

[\(Back to Table of Application Components\)](#)

Supporting Documents

You may submit optional Supporting Documents that supplement the Narrative in support of the project description. Optional Supporting Documents should help IMLS staff and reviewers envision the project in greater detail, but they should not be used to introduce new topics or to continue answers to the Narrative questions.

Give each document a clear, descriptive title at the top of the first page. You may consider the following:

- Letters of commitment from partners, consultants, or any third party that will receive grant funds or make substantial contributions towards the completion of project activities
- Bibliography or references relevant to your project design or evaluation strategy
- Letters of support from experts and stakeholders

- Needs assessments identifying knowledge gaps and areas of growth for the primary audience
- Recruitment plans showing proposed outreach strategies for the primary audience
- Learning objectives and/or curriculum for a proposed training program, internship, mentoring, or fellowship opportunity
- Logic models, assessment strategies, or evaluation frameworks
- Reports from planning activities
- Contractor quotes
- Equipment specifications
- Products or evaluations from previously completed or ongoing projects of a similar nature
- Web links to relevant online materials.

[\(Back to Table of Application Components\)](#)

Application Checklist

Use this checklist to make sure you have everything required to submit a complete proposal.

General Readiness

- Review the [Readiness Checklist](#) and make sure your organization has a UEI, and that your SAM.gov and Grants.gov registrations are current and active.

Forms (follow form and Grants.gov instructions)

- [SF-424S](#)
- [IMLS Museum Program Information Form](#)

Files

[Formatting Instructions](#)

- [Organizational Profile](#)
- [Narrative](#)
- [Schedule of Completion](#)
- [IMLS Budget Form](#)
- [Budget Justification](#)
- [List of Key Project Staff and Consultants](#)
- [Resumes of Key Project Staff and Consultants](#)
- [Performance Measurement Plan](#)
- Any [Conditionally Required Documents](#), if applicable
- [Supporting Documents](#), if any
- Double-check [format, file names, page limits, and attachment order](#) for all your PDF documents.

Disclosure of Information in Applications

We may share grant applications, products, and reports to further the agency's mission and the development of museum, library, archival, and information services. As a general practice, and except for information that is privacy-protected, information contained in IMLS applications that receive funding may be made public. Please identify any information in your application that you consider to be confidential and/or proprietary and seek to have protected.

5. Submission Requirements and Deadline

Submission Instructions

You must submit your applications for funding using [**Grants.gov Workspace**](#). Do not submit your application to IMLS via email, U.S. postal mail, or a delivery service; IMLS will reject applications not submitted via the Grants.gov Workspace..

Review the Registration Requirements and time frames. We strongly recommend that you obtain a UEI number, register with SAM.gov and Grants.gov, and complete and submit your application early. Leave plenty of time and use the contact information below to reach out to IMLS, the Federal Service Desk, or Grants.gov for questions and technical difficulties.

Programmatic, Administrative, and Technical Support Contacts

IMLS

IMLS staff are available by phone and email to answer programmatic and administrative questions relating to this grant program. Also, we offer pre-recorded webinars to introduce potential applicants to funding opportunities. For more information, see the [**21MP program page on the IMLS website**](#).

Federal Service Desk

Visit the [Federal Service Desk](#) for questions about registering or renewing your registration with login.gov or SAM.gov.

Grants.gov

Visit [Grants.gov Support](#), email support@grants.gov, or call the Grants.gov Support Hotline at 1-800-518-4726 for assistance with software issues, registration issues, and technical problems.

Be sure to obtain a case number when contacting the Federal Service Desk or Grants.gov for support.

Submission Dates and Times

For the 21MP Program, Grants.gov will accept applications through **11:59 p.m. U.S. Eastern Time on November 13, 2026**.

Grants.gov will create a date and time record when it receives that application. IMLS uses this timestamp to verify on-time application submission. The system will also generate a series of emails confirming the status of each application. For further details, visit [Track My Application](#) at Grants.gov.

Emergency Extensions

Under certain rare circumstances, we allow an extension of grant application deadlines for adversely affected applicant organizations located in counties listed in Emergency Declarations and/or Major Disaster Declarations. See [Application Deadlines](#) for further information.

Intergovernmental Review

This funding opportunity is not subject to intergovernmental review per Executive Order No. 12372.



Learn About Application Review

In this step:

6. Application Review Information.....	39
Eligibility and Completeness Checks.....	39
Review and Selection Process.....	39
Peer Review Criteria.....	40
Risk Assessment.....	42
7. Award Notices.....	43
Funded Applicants.....	43
Unfunded Applicants.....	43

6. Application Review Information

Eligibility and Completeness Checks

We assess every application to make sure it meets basic requirements for eligibility and completeness. IMLS generally will reject applications from:

- institutions that are determined to be ineligible, and
- applications that are determined to be incomplete or ineligible. For example, an application that:
 - is missing **required or conditionally required application components**;
 - is submitted after the **deadline**;
 - requests funding outside of the **applicable range**;
 - does not meet **the eligibility criteria for the program**, or
 - does not adhere to the program's **funding restrictions** and **guidelines**.

At its discretion and in rare circumstances, IMLS may consider an ineligible or incomplete application. IMLS retains sole discretion to determine whether to accept these applications, and such determinations are final.

If your application is rejected during these initial eligibility and completeness checks, we will notify you by email. If you believe the rejection was in error, you can appeal the decision via email within ten business days of the date we sent the rejection notice.

Review and Selection Process

We use a peer review process to evaluate all complete applications from eligible institutions. Reviewers are professionals in the field with relevant knowledge and expertise in the types of project activities identified in the applications.

We instruct reviewers to evaluate applications according to the peer review criteria detailed in the next section. Peer reviewers must comply with ethics, conflicts of interest, and non-disclosure requirements.

The Director considers the input from the review process and makes final funding decisions consistent with the criteria set forth in this NOFO.



[about our
peer
review
process](#)

Peer Review Criteria

We instruct reviewers to evaluate applications according to the review criteria listed in this section and to consider all **Required, Conditionally Required, and Supporting Documents.**

Cost share is an eligibility criterion and is not considered in the merit review of applications. Learn more about **cost share requirements for the 21MP program.**

Review Criteria

Project Justification



- How well does the proposal align with the selected **21MP program goal and associated objective**?
 - How well has the applicant used relevant data and other evidence to describe the need, problem, or challenge to be addressed?
 - Has the applicant appropriately defined the primary audience and beneficiaries, as applicable, for this work?
 - Have the primary audience and other project stakeholders been appropriately involved in planning the project?
 - Does the project address current needs of the museum workforce and have the potential to build career pathways and strengthen professional networks beyond a single institution?
-

Review Criteria

Project Work



Plan

- Are the proposed activities informed by relevant theory and effective practice in workforce training and professional development?
 - Do the identified staff, partners, consultants, and service providers have the experience and skills necessary to successfully complete the work?
 - Are the time, financial, personnel, and other identified resources appropriate for the scope and scale of the project?
 - Will the recruitment process employ effective strategies to reach the primary audience?
 - Are the goals, assumptions, and risks clearly stated?
 - If applicable, does the [Digital Products Plan](#) reflect appropriate practices and standards for creating and managing the types of digital products proposed?
 - Will the proposed methods for tracking the project's progress allow course adjustments when necessary?
 - Will the proposed methods for tracking the project's progress provide reliable and measurable information about the project results?
-

Review Criteria

Project Results



- Are the project's intended results clearly articulated, realistic, meaningful, and linked to the need, problem, or challenge addressed by the project?
- Is the plan to effect meaningful change in knowledge, skills, behaviors, and/or attitudes solidly grounded and appropriately structured?
- Will the products created by the project be made available and accessible to the primary audience?
- Is the plan to sustain the benefits of the project beyond the conclusion of the period of performance reasonable and practical?

Risk Assessment

For awards with a total amount of federal share greater than the simplified acquisition threshold (currently \$350,000 but is periodically adjusted), we are required to review and consider applicant information in the designated integrity and performance system, which is accessible through SAM.gov.

You may review information in the designated integrity and performance systems and



Learn more about the laws and regulations related to suspension and debarment systems, the simplified acquisition threshold, and applicant risk review:

comment on any information about your organization that a federal awarding agency previously entered.

We will consider any applicant comments, in addition to other information in the designated integrity and performance system, in reviewing the applicant's integrity, business ethics, and record of performance under federal awards when completing the review of risk posed by applicants.


7. Award Notices

We will not release information about the status of an application until we have completed the peer review process and all deliberations.

We expect to notify successful and unsuccessful applicants of final funding decisions by email in July 2027.

Funded Applications

If your application is funded, we will send your Authorizing Official, Project Director, and Grant Administrator an email notification with congratulations and instructions for accessing the agency's electronic grants management system, eGMS Reach. Once you activate your eGMS Reach account, you'll have access to your Official Award Notification, award letter, reporting schedule, IMLS-approved budget document, and anonymized reviewer feedback from your application's peer review.

 **The signed Official Award Notification is the only document obligating funds and authorizing you to begin performance on the specified dates.** Unless you've confirmed and received prior written approval from us that pre-award costs are allowed, incurring those costs before the period of performance begins is entirely at your own risk.

Unfunded Applications

If your application is not selected for funding, we will send your Authorizing Official, Project Director, and Grant Administrator an email notification. We will share the number of applications and the total amount of requested funding we received in response to this NOFO. We will also provide anonymized reviewer comments and scores for your application to help you understand the decision

and decide whether to revise the proposal and re-submit it to IMLS or another funding agency in the future.

.



Find Post-Award Information

In this step:

8. Post-Award Requirements and Administration.....	45
Administrative and National Policy Requirements.....	45
Reporting.....	45

8. Post-Award Requirements and Administration

Administrative and National Policy Requirements

There are important regulations and policies you will need to understand and comply with if you receive an award. Awardees are subject to:

- [2 C.F.R. § 200 Uniform Administrative Requirements, Cost Principles, and Audit Requirements for Federal Awards \(Uniform Guidance\)](#) (Governmentwide grant regulations);
- [2 C.F.R. § 3187 \(IMLS grant-specific regulations\)](#);
- The [IMLS General Terms and Conditions for IMLS Discretionary Grant and Cooperative Agreement Awards](#); and
- The [IMLS Assurances and Certifications](#).

*Please note: OMB is in the process of updating the Uniform Guidance at 2 CFR § 200 ([Uniform Guidance Revisions](#)). For IMLS grant awards made on or after October 1, 2026, the Uniform Guidance Revisions will apply.

The IMLS-specific grant regulations at [2 C.F.R. § 3187](#) formally adopt the Uniform Guidance.

Reporting

Awardees must comply with the following reporting requirements:

Interim and final financial and performance reports are due according to the reporting schedule in your official award documents. You must submit your

performance and financial reports in eGMS Reach. We may publish interim and final performance report content on the IMLS website (imls.gov).

You must also comply with **2 C.F.R. § 180** and **2 C.F.R. § 3185**; these rules pertain to providing information regarding all debarment, suspension, and related offenses, as applicable.

If the total value of your active grants, cooperative agreements, and procurement contracts from all federal agencies exceeds \$10,000,000 at any period of time during the period of performance period for an award issued under this NOFO, **you should refer to the reporting requirements set forth in 2 C.F.R. § 200, Appendix XII - Award Term and Condition for Recipient Integrity and Performance Matters.**



Visit our **Manage Your Award - Grant Administration page** to learn more about reporting

See also: 2 C.F.R. § 200.113 (Mandatory disclosures) and 2 C.F.R. § 200.211(c)(1)(iii) (Information contained in a federal award).



Other Information

In this section:

9. Other Important Information.....	48
IMLS Assurances and Certifications.....	48
Acknowledging IMLS Support.....	48
Conflict of Interest Requirements.....	48
Additional Information about IMLS.....	49
IMLS Obligations to Make Awards.....	49
Peer Review.....	49
Copyright Information.....	50
Application Completion Time.....	50
PRA Clearance Number.....	50

9. Other Important Information

IMLS Assurances and Certifications

Applicants for federal funds must certify that they will comply with certain nondiscrimination, debarment and suspension, drug-free workplace, and lobbying statutes and regulations. These are set forth in more detail, along with other requirements, in the [**IMLS Assurances and Certifications**](#).

By submitting an application, which includes the [**IMLS Assurances and Certifications**](#), you certify that comply with these requirements and that you will maintain records and submit any reports that are necessary to ensure such compliance. Failure to comply with these statutory and regulatory requirements may result in the suspension or termination of the award and require that the recipient return funds to the government.

For information about award termination, please see the [**IMLS General Terms and Conditions for IMLS Discretionary Grant and Cooperative Agreement Awards**](#) and [**2 C.F.R. § 200.340 Termination**](#). IMLS may update the General Terms and Conditions before making awards for this program.

Acknowledging IMLS Support

Award recipients must include acknowledgement of IMLS support in all grant products, publications, websites, and presentations developed with IMLS funding.

All work products must reference IMLS and include the associated award number(s). [**The IMLS Grantee Communications Kit**](#) provides guidance for fulfilling these requirements.

Conflict of Interest Requirements

Recipients must follow IMLS conflict of interest policies for federal awards. You must disclose in writing any potential or actual conflict of interest to an IMLS Program Officer, or to the pass-through entity if you are a subrecipient or contractor. This disclosure must take place immediately whether you are an applicant or have an active IMLS award.

The IMLS conflict of interest policies apply to subawards as well as contracts, and are as follows:

- You must maintain written standards of conduct covering conflicts of interest and the performance of your employees engaged in the selection, award, and administration of subawards and contracts.
- None of your employees may participate in the selection, award, or administration of a subaward or contract supported by a federal award if he or she has a real or apparent conflict of interest. Such a conflict of interest may arise if the employee, officer, agent, board member, or any member of his or her immediate family, his or her partner, or an organization which employs or is about to employ any of the parties indicated herein, has a financial or other interest in or a tangible personal benefit from an organization being considered for or that has received a subaward or contract. Also, the officers, employees, agents, and board members of your organization must not solicit or accept gratuities, favors, or anything of monetary value from subrecipients or contractors or parties to subawards or contracts.
- If you have a parent, affiliate, or subsidiary organization that is not a state, local, or tribal government, you must also maintain written standards of conduct covering organizational conflicts of interest. An organizational conflict of interest occurs if, because of relationships with a parent company, affiliate, or subsidiary organization, you are unable or appear to be unable to be impartial in conducting a subaward or procurement action involving a related organization.

Additional Information about IMLS

Visit the [IMLS website](#) for additional information on IMLS and its activities.

IMLS Obligations to Make Awards

This NOFO does not obligate IMLS to make any federal award or commitment.

Peer Review

Any individual who is interested in serving as a peer reviewer should enter their contact information and identify their experience and expertise through the IMLS [online reviewer application portal](#). IMLS staff will notify individuals who are identified as potential reviewers by email prior to the next review period to confirm their availability.

Copyright Information

Award recipients may obtain copyright protection for any work developed under a federal award or for any copyrighted work whose ownership was acquired under a federal award. IMLS reserves a royalty-free, nonexclusive, and irrevocable right to reproduce, publish, or otherwise use the work for federal purposes and to authorize others to do so. For additional information, [see 2 C.F.R. § 200.315 \(Intangible property\)](#).

Application Completion Time

Complete applications include the elements listed in the [Table of Application Components](#). IMLS estimates the average amount of time needed for one applicant to complete this application to be 45 hours. This includes the time for

reviewing instructions, searching existing data sources, gathering and maintaining the data needed, and writing and reviewing the answers.

We estimate that it will take an average of 30 minutes per response for the IMLS Museum Program Information Form and three hours per response for the IMLS Budget Form.

We welcome your suggestions for improving this collection of information and for making it as easy to use as possible. Send comments regarding this burden estimate or any other aspect of this collection of information, including suggestions for reducing this burden, to [the IMLS Office of Grants Management](#). Please note that applicants are not required to respond to any collection of information unless it displays a currently valid OMB control number.

PRA Clearance Number

OMB Control No.: 3137-0135, Expiration date: 8/31/2027



Additional Guidance

In this section:

- Guidance for Required Registrations.....52**
 - Obtaining a Unique Entity Identifier..... 52
 - Registering with SAM..... 52
 - Registering with Grants.gov..... 53
- Guidance for Completing Forms and Other Application Components.....54**
 - Grants.gov Forms..... 54
 - SF-424S Form..... 54
 - IMLS Museum Program Information Form (M-PIF)..... 58
 - IMLS Budget Form..... 61
 - Cost Share in the Budget..... 63
 - Indirect Costs in the Budget..... 64
 - Student Support Costs in the Budget..... 66
 - Budget Justification..... 68
 - Proof of Private, Nonprofit Status..... 70
 - Digital Products Plan..... 70

Guidance for Required Registrations

Obtaining a Unique Entity Identifier

The Unique Entity Identifier (UEI) number is a non-proprietary alphanumeric identifier assigned to all entities (public and private companies, individuals, institutions, or organizations) who register to do business with the Federal Government. The UEI is requested in, and assigned by, the System for Award Management (SAM).

Award recipients must inform any first-tier subrecipients that the recipient cannot make a subaward unless the subrecipient has also obtained a UEI. First tier subrecipients, but not second-tier subrecipients or contractors, are required to obtain a UEI. However, subrecipients are not required to complete a full registration in SAM.gov in order to obtain an UEI.

If your organization has an active SAM registration, you can find your assigned UEI in your SAM record. Your organization's UEI must be active on both the date that your application is submitted and on the award date. If you don't yet have an active SAM registration, you will receive a UEI when you register in SAM.

[Learn more about the UEI.](#)

Registering with SAM

The System for Award Management (SAM) is a federal repository that centralizes information about grant applicants and awardees. It is always free to all users. You must register with SAM at SAM.gov before registering with Grants.gov. [Learn how to check an organization's registration status in SAM.](#)

If you're registering with SAM for the first time, you must begin by creating a SAM user account through [Login.gov](#). [Click here to learn how to create a secure Login.gov account.](#) Then [proceed to the SAM registration process.](#)

We recommend that you allow several weeks to complete the SAM registration process.

You must always maintain an active SAM registration with current information while you have an active award or an application under consideration. We are not able to make an award to an entity until it has complied with all applicable UEI and SAM registration requirements. If you have not fully complied with the requirements by the date we are making awards, the agency will not be able to make an award to your entity.

You must renew your organization's registration in SAM at least every 12 months or whenever your organization's information changes. An expired registration will prevent your entity from submitting applications via Grants.gov and receiving awards or payments. Award payments will be deposited in the bank account associated with your organization's SAM registration.

Registering with Grants.gov

Grants.gov is the centralized website for grant seekers to find and apply for federal funding opportunities. Grants.gov is owned and operated by the federal government and is always free to all users.

You must **register with Grants.gov** prior to applying for this opportunity. The multistep registration process cannot be completed in a single day. You should make sure your institution's SAM registration is current and active before registering with Grants.gov. If your organization is not already registered, allow several weeks before the application deadline to complete this one-time process.

Do not wait until the application deadline to register.

The Grants.gov user ID and password you obtain when you register are required to submit your application.

After your organization registers with Grants.gov and creates an Organizational Applicant Profile, the request for the organization's Grants.gov roles and access is sent to the eBiz POC. The eBiz POC will then log into Grants.gov and assign the appropriate roles to individuals within the organization. This will include the

Authorized Organization Representative (AOR) who is able to complete and submit applications on behalf of the organization.



TIP: Designating more than one Authorized Organization Representative (AOR) when you register in Grants.gov will help avoid a last-minute crises if a single AOR is unavailable when you submit your application. It is also important to update the contact information and password in Grants.gov whenever an there are changes with your AOR.

Visit [Grants.gov/Support](https://www.grants.gov/Support), email support@grants.gov, or call the Grants.gov Customer Support Hotline at 1-800-518-4726 for assistance with software issues, registration issues, and technical problems. The Hotline is available 24 hours a day, seven days a week, except for federal holidays.

Guidance for Completing Forms and Other Application Components

Grants.gov Forms

SF-424S Form

The SF-424S Form, or the Application for Federal Domestic Assistance/Short Organizational Form, is part of the application package in Grants.gov.

SF-424S Item Instructions

Items 1 - 4

Grants.gov automatically populates items 1-4.

Item 5. Applicant Information

- a Legal Name:** Enter your organization's legal name as it appears in your SAM registration. This is the organization with the authority to apply directly for funding for this program. If there is an organizational unit that will be carrying out the project, be sure to specify it as such on the [IMLS Museum Program Information Form](#).
 - b Address:** Enter your legal applicant's address as it appears in your SAM registration.
 - c Web Address:** Enter the URL of your organization's website.
 - d Type of Applicant:** Select the code that best characterizes your organization from the menu in the first dropdown box. Leave the other boxes blank.
 - e Employer/Taxpayer Identification Number**
-

SF-424S Item Instructions

(EIN/TIN): Enter the EIN or TIN assigned to your organization by the Internal Revenue Service.

f Organizational UEI: Enter your organization's Unique Entity Identifier (UEI). If your organization's SAM registration is active, you can find your assigned UEI in your SAM record. If you cannot locate your UEI, contact the Federal Service Desk at www.fsd.gov.

g Congressional District: Enter your organization's congressional district.

Use the following format: two-letter state abbreviation, followed by a hyphen, followed by a zero, followed by the two-digit district number. For example, if the organization is located in the 5th Congressional District of California, enter "CA-005." For the 12th Congressional District of North Carolina, enter "NC-012."

For states and territories with "At Large" Congressional Districts—that is, one representative or delegate represents the entire state or territory—use "001," e.g., "VT-001. If your organization does not have a congressional district (e.g., it is located in a U.S. territory that does not have districts), enter "00-000." To determine your organization's district, [visit the House of Representatives website](#) and use the "Find Your Representative" tool.

SF-424S Item Instructions

Item 6. Project Information

- a Project Title:** Enter a brief descriptive title for your project, using no more than 200 characters, including spaces. IMLS may use this title for public information purposes.
- b Project Description:** Enter a brief description (about 120 words) for your project. Tell us about the purpose of the project, the activities to be performed, the deliverables and expected outcomes, and the intended beneficiaries. Use clear language that readers who might not be familiar with the discipline or subject area can understand.
- c Proposed Project Start Date/End Date:** Enter the start and end date of the proposed period of performance in the format mm/dd/yyyy. The project period begins on the first day of the month in which project activities start and ends on the last day of the month in which these activities are completed. Refer to [the Award Overview](#) to determine when your project can begin.

NOTE: We use [Login.gov](#) for user authentication in our electronic grants management system, eGMS Reach. Login.gov helps protect user identity through stronger passwords and two-factor authentication.



Login.gov requires that the email addresses for the Project Director, Primary Contact/Grants Administrator, and Authorized Representatives in Items 7, 8, and 9 on the SF-424S Form be unique to those individuals. General email addresses or those used by several people in a single office are not

SF-424S Item Instructions

Item 7. Project Director

The Project Director has the primary responsibility for carrying out your project's activities. Enter the requested information for this individual here.

We require that the Project Director be a different individual than the Authorized Representative.

Item 8. Primary Contact/Grants Administrator

The Primary Contact/Grants Administrator has the main responsibility for administering the award. Enter the requested information for this individual here.

Please complete both items 8 and 9 if the Primary Contact/Grants Administrator is the same individual as the Authorized Representative.

In some organizations this individual may be the same as the Project Director. If this is the case, check the box and skip to Item 9.

SF-424S Item Instructions

Item 9. Authorized Representative

The Authorized Representative has the authority to legally bind your organization. Enter the requested information for this individual here. **The Authorized Representative cannot be the same individual as the Project Director.**

By checking the “**I Agree**” box at the top of Item 9, this individual certifies the applicant’s compliance with the [**IMLS Assurances and Certifications**](#) and any other relevant federal requirements.

Grants.gov automatically populates the “Signature of Authorized Representative” and “Date Signed” boxes upon submission of the application. This is the individual whose name is listed as your organization’s authorized representative in your Grants.gov registration.

Please note that this name might not be the same as the name and other information you entered in Item 9 above.

By submitting the electronic application, you acknowledge that your organization certifies compliance with relevant federal requirements, including but not limited to the [**IMLS Assurances and Certifications**](#), to the same extent as a signature does on a paper application.

IMLS Museum Program Information Form (M-PIF)

The IMLS Museum Program Information Form is part of the application package in Grants.gov. Sections of this form are dynamic, so your answers to certain questions will determine what questions you see next.

PIF Section	Instructions
Section 1. Grant Program	Select 21 st Century Museum Professionals.
Grant Program Goals and Objectives	<p><u>Refer to the 21MP Program Goals and Objectives.</u> Select the grant program goal that best aligns with your proposed project. Once you have selected a goal, select one associated objective.</p>
Section 2. Applicant Information	<p>Does this entity have an organizational unit that will carry out the activities described in your application?</p> <p>Refer to the entity listed in Item 5a of the Grants.gov SF-424S Form that you are submitting with your application and review the Helpful Definitions of organizational unit and legal applicant on the Program Information Form. Select YES if your organization has an organizational unit and NO if it does not. Next, make selections from the choices and provide the information requested.</p>

PIF Section

Instructions

Section 3. Financial Information

Provide the information requested in items a-d. If you named an organizational unit in Section 2 of this form, this information must pertain to that unit. Please complete the table with figures representing the most recently completed fiscal year in the top row, followed by those for the previous year, and concluding with those for the year before that.

Section 4. Museum Profile

Select answers for items a-k. If you named an organizational unit in Section 2, this information must pertain to that unit.

If your organization is eligible to apply for an IMLS grant as a museum, then make selections from among the choices that appear and provide the information requested.

Section 5. Funding Request

Refer to the **Grant Fund** and **Cost Share totals** in **Section 10 of the IMLS Budget Form** (PDF, 1.67MB) that you are submitting with your application. Provide the amount in dollars that you are requesting from IMLS and the amount of non-federal funding you are providing as cost share/match. Enter "0" if your budget includes no cost share/match.

Section 6. Indirect Costs

Refer to the IMLS Budget Form - Indirect Costs in the Budget guidance. Select one option and provide any required information for your selection which should match the information entered on the IMLS Budget Form submitted with your application.

PIF Section

Instructions

Section 7. Abstract

Write an Abstract of no more than 3,000 characters (including spaces) in a concise narrative format for experts as well as for a general audience. Address the following:

- Identify the lead applicant and, if applicable, any collaborators.
- Describe the need, problem, or challenge your project will address, and how it was identified.
- List the high-level activities you will carry out and identify the associated time frame.
- Identify who and/or what will benefit from your project.
- Specify your project's intended results and how they will be disseminated.
- Describe how you will measure your success in achieving your intended results.

Enter or paste your text into the form.

IMLS Budget Form

Make sure that JavaScript is enabled in your web browser. Download the [IMLS Budget Form \(PDF, 1.67MB\)](#) to your computer and work on it outside your web browser. When you've completed the form, save it as a PDF and upload it as part of your application through Grants.gov.

The IMLS Budget Form accommodates up to three years of project activities and expenses. Project timelines, allowable costs, and other budget details vary by program. Be sure to carefully review the NOFO for the grant program/project type to which you are applying and the cost principles in 2 C.F.R. § 200 and 2 C.F.R. § 3187.

The Year 1 columns should include costs for activities that begin on the project start date (as listed on 6c of the SF-424S) and end 12 months later. If the project timeline exceeds one year, list the costs for the next 12 months in the Year 2



Learn more about the regulations and requirements related to cost principles for federal awards:

- [2 C.F.R. 200 § Subpart E - Cost Principles](#)
- [2 C.F.R. § 3187 Subpart C Allowable Costs](#)

columns. If the project extends beyond two years, list the costs for the next 12 months in the Year 3 columns.

Tips for completing your budget form:



- The budget should include project costs that will be charged to grant funds as well as those that will be supported by cost share, if any.
- The total federal funding requested on your IMLS Budget Form -- including all direct and indirect costs -- must be within the allowable funding range set forth in this NOFO.
- In-kind contributions to cost share may include the value of services (e.g., donated volunteer or consultant time) or

equipment donated to the project between the authorized start and end dates of your project.

- All the items listed, whether supported by grant funds or cost share, must be necessary to accomplish project objectives, allowable according to the applicable federal cost principles, auditable, and incurred during the award period of performance.
- Charges to the project for items such as salaries, fringe benefits, travel, and contractual services must conform to the written policies and established practices of your organization.
- You must report as program income revenue generated with project funds during the award's period of performance.
- If you need more lines for a specific section, summarize the information in the IMLS Budget Form and explain it further in the Budget Justification.
- Watch the pre-recorded webinar [Preparing a Budget and Budget Justification](#) for information on how to prepare these application components.

Budget Form Section

Instructions

1. Salaries and Wages

Include both temporary and permanent staff as well as volunteers engaged in project activities. Document how you calculated salaries and wages in your Budget Justification by including the base salary or wages for each person and the percentage of time each person is allocated to project activities, which may be shown as a percentage of time, number or days, or number of hours.

Budget Form Section

Instructions

2. Fringe Benefits

Fringe benefits can be claimed as a direct cost for only those positions included in your direct cost pool and only for the portion of salaries and wages identified for this project. Indicate your organization's fringe benefit rate (in percent) and the base (in dollars) to which the rate is applied (e.g., 20% x \$175,089.00).

3. Travel

Explain how you calculated amounts each travel cost, including subsistence, lodging, and transportation, in your Budget Justification.

You must use the lowest available commercial fares for coach or equivalent accommodations, and you must use U.S. flagged air carriers for foreign travel when such services are available, in accordance with applicable requirements.

4. Supplies, Materials, and Equipment

List the costs of supplies, materials, and equipment purchased specifically for the proposed project. For definitions and other information, please see [2 C.F.R. part 200](#). Use the Budget Justification to explain or describe these items in further detail.

Budget Form Section

Instructions

5. Subawards and Contracts

List each third party that will perform project activities and their associated costs as individual line items on your IMLS Budget Form. Designate each third party as either a subaward or a contract using the dropdown menu on each line. Itemize these third-party costs in your Budget Justification.

6. Student Support

If your project includes Student Support costs, enter them in this section. **Refer to Student Support Costs in the Budget** for a definition and examples.

7. Other Costs

Use this section for costs that cannot be assigned to other categories. Do not use this section to list items that do not fit in the lines allotted for another section.

8. Total Direct Costs

These amounts will total automatically.

9. Indirect Costs

Indirect costs are expenses that are incurred for common or joint objectives that cannot be easily identified with a particular project. Indicate your organization's indirect cost rate (as a percentage) and the base (in dollars) to which the rate is applied (e.g., 34% x \$123,456.78). **Refer to Indirect Costs in the Budget** for more information.

Budget Form Section

Instructions

10. Total Project Costs

These amounts will total and round up to the nearest dollar automatically.

The total federal funding requested on your IMLS Budget Form -- including all direct and indirect costs -- must be within the allowable funding range set forth in this NOFO.

Cost Share in the Budget

Cost share is the portion of the project costs that is not paid by IMLS funds. Common examples of cost share include cash outlays; contribution of property and services; and in-kind contributions, such as staff or volunteer time that support project activities.

All expenses, including cost share, must be incurred during the award period of performance unless otherwise specified and allowed by law. Funds received from other federal awards may not be used for cost share. All federal, IMLS, and program requirements regarding the use of funds apply to both IMLS funds and to cost share funds.

[See 2 C.F.R. § 200.306 for more information on cost share.](#)

Indirect Costs in the Budget

Indirect costs are expenses incurred for common or joint objectives and thus cannot be readily associated with a particular project. Some examples include depreciation on buildings and equipment, the costs of operating and maintaining facilities, and general administration and general expenses, such as the salaries and expenses of executive officers, personnel administration, and accounting.

[See 2 C.F.R. § 200.414 for additional guidance on indirect costs.](#)

Options for Calculating and Including Indirect Costs in a Project Budget

In your budget, you may:

- use a rate not to exceed your current indirect cost rate already negotiated with a federal agency;
- use a rate proposed to a federal agency for negotiation, but not yet finalized. However, the rate must be finalized by the time your budget is approved before IMLS makes the award;
- use a rate not to exceed 15 percent of Modified Total Direct Costs (MTDC) if the organization currently does not have a Federally Negotiated Indirect Cost Rate Agreement (NICRA) and is not subject to other requirements; or
- not include any indirect costs.

Using a Federally Negotiated Indirect Cost Rate Agreement

A Federally Negotiated Indirect Cost Rate Agreement (NICRA) is a document that reflects an estimate of indirect costs negotiated between the federal government and a non-federal organization. There are several types of indirect cost rates (e.g., Provisional, Predetermined, Fixed, Final), and some agreements identify several locations to which a particular rate applies (e.g., on-site/campus, off-site/campus), and/or program types for which a particular rate may be used (e.g., Instruction, Organized Research, All Programs, Other Sponsored Activities).

If your organization already has a NICRA in effect, you may use one of the approved rates in the calculation of your project's indirect costs and by extension, your total project costs, if you apply the appropriate rate and include a copy of the current agreement with your grant application. In your application, you may use a rate lower than the rate in your agreement, but you may not use a higher one. We will accept only NICRAs that are current on the award date.

Carefully review your institution's negotiated indirect cost rate(s) to make sure you are using the appropriate rate for your project.

Please be aware that the indirect cost rate used in your approved IMLS budget (and that will also appear on the Official Award Notification if an award is made) will apply throughout your award's entire period of performance. Even if you negotiate a new rate with your cognizant agency after award performance has begun, you will not be permitted to use this new rate.

Using a Proposed Indirect Cost Rate

If your organization is currently negotiating a NICRA with a federal agency, you may use the indirect cost rate proposed to the federal agency to estimate indirect and total project costs. In this situation, if we issue an award, we will accept the rate only if negotiations are final by the award date and a copy of the final agreement is submitted to us. Agency staff will work with you to adjust your budget prior to issuing an award.

Using the 15 Percent De Minimis Indirect Cost Rate

You may charge a *de minimis* rate of up to 15 percent of Modified Total Direct Costs, as long as you do not have a current NICRA and you meet the applicable requirements. [See 2 C.F.R. §200](#), including [2 C.F.R. § 200.1 \(Definitions\)](#), [200.414\(f\)](#), and [200.510\(b\)\(6\)](#), for additional guidance.

Modified Total Direct Costs include:

- all direct salaries and wages,
- applicable fringe benefits,
- materials and supplies,
- services,
- travel, and
- up to the first \$50,000 of each subaward (regardless of the period of performance of the subawards under the award).

Modified Total Direct Costs exclude:

- equipment,
- capital expenditures,
- charges for patient care,
- rental costs,

- tuition remission,
- scholarships and fellowships,
- participant support costs, and
- the portion of each subaward in excess of \$50,000.

Other items may only be excluded when necessary to avoid a serious inequity in the distribution of indirect costs, and with the approval of the cognizant agency for indirect costs.

If you are using the up to 15 percent *de minimis* indirect cost rate, check the box indicated on the IMLS Budget Form. No additional documentation is required.

Applying an Indirect Cost Rate to the Cost Share Portion of a Budget

If doing so is consistent with 2 C.F.R. § 200, you may apply your indirect cost rate to your total direct costs covered by cost share. However, you must account for any costs identified as cost share in the cost share column on the IMLS Budget Form. IMLS funds can be used for indirect costs, but only on the portion of direct costs supported by IMLS funding (the Grant Funds column). (**See, for example, 2 C.F.R. § 200.412-414.**)

Restrictions on Project Costs Included in Indirect Cost Calculations

If you have a current NICRA, you must follow its conditions and requirements.

As noted above, if you do not have a current NICRA and meet applicable requirements, you may elect to charge a *de minimis* rate of up to 15 percent of the Modified Total Direct Costs in your indirect cost calculations.

If you have a current NICRA with a rate of less than 15 percent, you must use that rate instead of the *de minimis* rate in your indirect cost calculations.

Please see the section above on the up to 15 percent *de minimis* rate as well as **2 C.F.R. § 200.414(f)** and **§ 200.1 Definitions.**

Student Support Costs in the Budget

Students are:

- Individuals enrolled in a community college, undergraduate, or graduate program of study;
- Individuals participating in post-master's or post-doctoral programs that are focused on supporting their careers or professional development; or
- Library, archives, and museum staff participating in education and training activities focused on their careers or professional development.

Examples of Student Support include:

- Tuition support for students participating in the project;
- Salaries or stipends for graduate assistant work, if their work is focused on research and teaching activities (therefore contributing to their education);
- Pay and benefits for a resident or fellow to work in a position that is intended to support their learning outcomes or professional development;
- Costs for travel and conference registration provided to support a student or participant's learning outcomes or professional development; or
- Costs of supplies and equipment provided to students to support a student's learning outcomes or professional development.

Activities not considered Student Support include:

- Students employed in roles that are primarily administrative or clerical, doing work that is not primarily focused on their career or professional development. These costs should be listed in the Salaries and Wages section of the budget, and tuition paid on behalf of these students is not considered Student Support.

See [2 C.F.R. § 200.466 \(Scholarships and student aid costs\)](#); see also [2 C.F.R. § 200.430 \(Compensation – personal services\)](#).

Budget Justification

To write your Budget Justification, follow the IMLS Budget Form's section headings to organize the document and save it as a PDF. Address both grant funds and cost share, if included. Do not use the Budget Justification to expand your narrative.

Budget Section

Instructions

1. Salaries and Wages

- Identify each person whose salary or wages will be paid with IMLS funds and/or by cost share, provide their names, and describe their role in the project.
- Document how you calculated salaries and wages by including the base salary or wages for each person and the percentage of time each person is allocated to project activities, which may be shown as a percentage of time, number of days, or number of hours.
- If cost share is being provided by unpaid volunteers, explain how you arrived at the dollar amount used to represent the value of their services.
- For new staff positions included in this project, provide information on how the estimated salary and wages align with industry standards and prevailing wages for your local area.

2. Fringe Benefits

- Identify your organization's fringe benefit rate (as a percentage) and the base (in dollars) to which the rate is applied for each person.
 - If you have consolidated several individual' fringe benefits into a single line on the IMLS Budget Form, break out the detail here.
-

Budget Section

Instructions

3. Travel

- For each trip, explain the purpose of the trip and specify the points of origin and destination, the name of the traveler, and break out the costs of transportation, lodging, per diem, and any other expenses associated with the travel. Explain how you arrived at these dollar amounts.

4. Supplies, Materials, and Equipment

- List each type of supply, material, and equipment you propose to purchase or provide as cost share for the project.
 - Detail the number and unit cost for each item and explain how you arrived at the dollar amounts.
 - Provide vendor quotes or price lists as Supporting Documents with your application.
-

Budget Section

Instructions

5. Subawards and Contracts

- List the costs of project activities to be performed by third parties for the project (common terms for third parties include partners, consultants, subgrantees, contractors, collaborators, vendors, and service providers).
- Identify each third party by name, describe their role in the project, the activities they will carry out, and the cost.
- For each entry, designate the third party as either a subrecipient (who receives a subaward) or a contractor (who receives a contract).
- Explain costs for third parties and provide relevant Supporting Documents with your application. Generally, IMLS grant funds may not be provided to other U.S. government agencies.

You are responsible for making a case-by-case determination whether an agreement you enter into with a third party should be a subaward or a contract. That determination will depend upon the nature of your relationship with the third party with respect to the activities to be carried out.

See 2 C.F.R. § 200.331 (Subrecipient and contractor determinations).

6. Student Support

Explain your method for calculating the costs listed in this section. **See the definition and examples of Student Support.**

Budget Section

Instructions

7. Other Costs

Use this section for costs that cannot be assigned to other categories.

8. Total Direct Costs

Indicate the total direct costs and specify the amount you are requesting from IMLS and how much you propose to provide as cost share, if any

9. Indirect Costs

If you include indirect costs in your project budget, identify the indirect cost rate (as a percentage) and the base (in dollars) to which the rate is applied. [**Read about indirect costs in the Budget.**](#)

10. Total Project Costs

Indicate the total project costs here and specify the amount you are requesting from IMLS and how much you propose to provide as cost share, if any.

Proof of Private, Nonprofit Status

An organization applying as a private, nonprofit institution must submit a copy of the letter from the Internal Revenue Service indicating its eligibility for nonprofit status under the applicable provision of the Internal Revenue Code of 1954, as amended. (See 2 C.F.R. § 3187.7(b).) IMLS will not accept a letter of state sales tax exemption as proof of nonprofit status.

Digital Products Plan

We are committed to expanding public access to digital products created using federal funds. We request that each applicant create and submit a Digital Products

Plan describing how you will address specific aspects of creating and managing digital products, employing practices and standards that are most appropriate for your specific project. IMLS staff and peer reviewers will assess your plan, which will be important in determining whether your project will be funded. Organize your plan to address all of the following:

- Type
- Availability
- Access
- Sustainability.

We participate in the Federal Agencies Digital Guidelines Initiative (FADGI), a collaborative effort by federal agencies to define common standards, guidelines, methods, and best practices for creating digital collections. [Visit the FADGI website](#) for a growing list of links to relevant standards, recommendations, and other resources. While this list is not exhaustive—nor do we endorse or recommend any specific resource—applicants considering digital projects may find the information useful. This list is provided for informational and reference purposes only.

Use the guidance below to help you create and organize your Digital Products Plan.



Type

What digital products will you create?

Most projects are likely to generate digital content, resources, or assets. They may be digitized or born-digital products created by individuals, project teams, or through community gatherings.

Examples include, but are not limited to, still images, audio files, moving images, microfilm, object inventories, object catalogs, artworks, books, posters, curricula, field books, maps, notebooks, scientific labels, metadata schema, charts, tables, drawings, workflows, teacher resources, and software, including source code,

algorithms, applications, and digital tools, plus accompanying documentation.

In your Digital Products Plan:

- describe the digital content, resources, or assets you will create or collect,
- the quantities of each type,
- the digital file format(s),
- the accompanying metadata, and,
- any relevant standards you will use.

If you are developing software, also specify the programming languages, platforms, frameworks, software, or other applications you will use to create your software and explain why you selected them.



Availability

How will you make your digital products openly available (as appropriate)?

We encourage grant recipients to make works produced with IMLS support widely available, and to share their work products (including publications, datasets, educational resources, software, and digital content) whenever possible through free and open-access journals and repositories. Your project may involve making digital products available through public or access-controlled websites, kiosks, or live or recorded programs.

We expect you to ensure that publications produced under a grant award (including but not limited to peer-reviewed manuscripts resulting from research conducted under an award) are made available in a manner that permits the public to access, read, download, and analyze the work without charge.

In your Digital Products Plan:

- describe how you will make the digital content, resources, assets, software, and metadata available to the public;
- include details such as the delivery strategy (e.g., openly available online, available to specified audiences) and underlying hardware/software platforms and infrastructure (e.g., specific digital repository software or leased services, accessibility via standard web browsers, requirements for special software tools to use the content, delivery enabled by IIIF specifications); and
- identify and explain the reasons for any limitations in your Digital Products Plan.



Access

What rights will you assert over your digital products, and what limitations, if any, will you place on their use?

Will your products implicate privacy concerns or cultural sensitivities, and if so, how will you address them?

Award recipients may copyright any work subject to copyright that was created under the award or for which ownership was acquired under the award. However, IMLS reserves, for federal government purposes, a royalty-free, nonexclusive, and irrevocable right to reproduce, publish, or otherwise use the work and authorize others to do the same.

We expect applicants receiving federal funds for developing or creating digital products to release these files under open-source licenses to maximize access and promote reuse. All work products resulting from IMLS funding should be distributed for free or at cost unless the agency has provided written approval for another arrangement.

In your Digital Products Plan:

- identify any licenses under which digital products will be shared (e.g., Creative Commons licenses, RightsStatements.org statements);
- describe what intellectual property rights you will assert over your digital products and explain any limitations or conditions to be placed on their use; and

- if your products implicate privacy concerns or cultural sensitivities, describe these issues and how you plan to address them.



Sustainability

How will you address the sustainability of your digital products?

To the maximum extent possible, digital products created with IMLS funding should be freely and readily available for use and reuse by libraries, archives, museums, and the public.

Some digital products that are generated during a project should be long-lived, requiring permanent preservation, and others (e.g., preliminary analyses, drafts of papers, plans for future work, peer-review assessments, most social media communications, and communications with colleagues) should be retained and shared in the medium- or short-term.

In your Digital Products Plan:

- describe your plan for preserving and maintaining digital products during and after the award's period of performance;
- identify the appropriate length of time different digital products should be curated; and
- address storage systems, shared repositories, technical documentation, migration planning, and commitment of organizational funding for these purposes.